

TEW-424UB

Lühike paigaldusjuhend

Version 10.12.2005



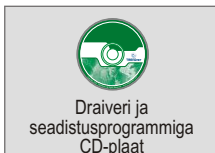
Sisukord

Eesti	1
1. Paigalduseks valmistumine	1
2. Riistvara paigaldamine	2
3. WiFi seadistusprogrammi paigaldamine	3
4. Draiverite paigaldamine	5
5. WiFi seadistamine	8
Troubleshooting	12

1. Paigalduseks valmistumine

Kontrolli pakendi sisu

Palun veendu, et karbis on kõik osad:



Minimaalsed nõuded süsteemile

Enne USB WiFi adapteri paigaldamist peaks sul olema:

1. USB toega arvuti
2. 300 MHz protsessor ja 32 MB mälu (soovituslik)
3. CD-lugeja
4. 802.11g või 802.11b accesspoint (kasutamiseks infrastruktuuri režiimis) või teine 802.11g WiFi adapter (kasutamiseks Ad-Hoc/võrdsete sõlmedega võrgus)
5. Windows 98SE/ME/2000/XP

Märkus: Ära ühenda WiFi USB adapterit oma arvutiga enne, kui oled paigaldanud seadistusprogrammi ja draiveri.

2. Riistvara paigaldamine

TEW-424UB on käigu pealt vahetatav. Sa võid adapteri ühendada või eemaldada arvuti töötamise ajal.

Ühenda USB WiFi adapter oma arvuti USB porti.

Märkus: Adapteri paremaks paigutamiseks võid kasutada komplekti kuuluvat USB pikendusjuhet.



3. WiFi seadistusprogrammi paigaldamine

Windows 98SE/ME/2000/XP

1. Sisesta TEW-424UB CD-plaat arvuti CD-seadmesse. Paigaldusmenüü avaneb automaatselt. Kui aken ei avane automaatselt, vali **Start**, kliki **Run** ja sisesta tekstiväljale E:\Autorun.exe. Vajuta **OK** nupule.

Märkus: Asenda E-täht "E:\Autorun.exe" real sinu CD-seadme tähega.

2. Vali paigaldusmenüüst **Install Utility**.

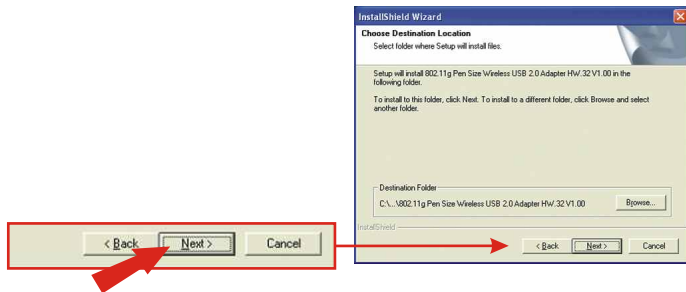


3. WiFi seadistusprogrammi paigaldamiseks järgi InstallShield viisardi juhiseid. Vajuta **Next** nupule.

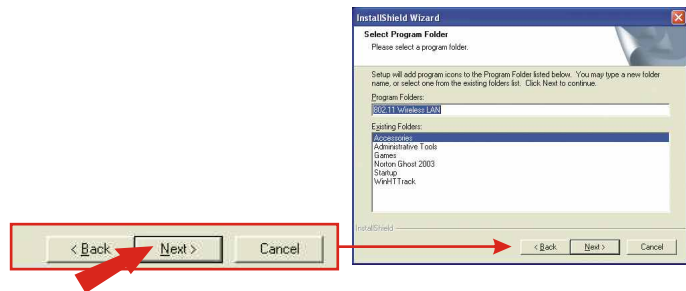
4. Vajuta **Next** nupule.



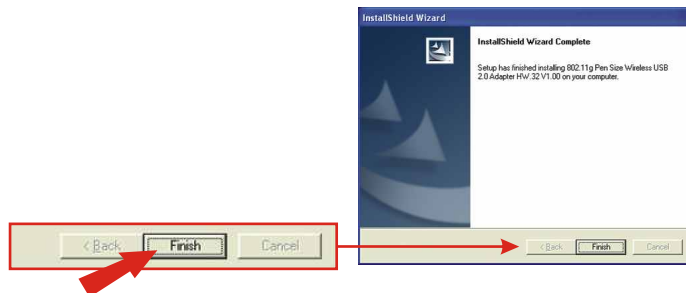
5. Vajuta **Next** nupule.



6. Vajuta **Next** nupule.



7. Vajuta **Finish** nupule.



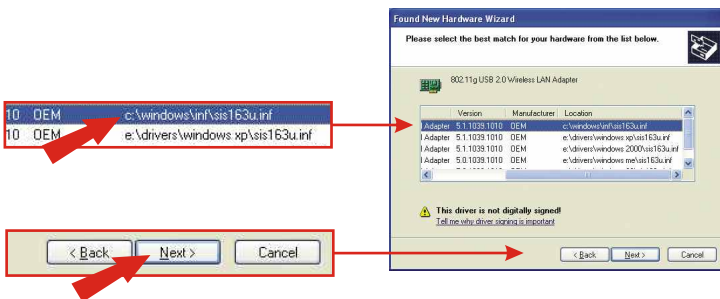
4. Draiverite paigaldamine

Windows XP

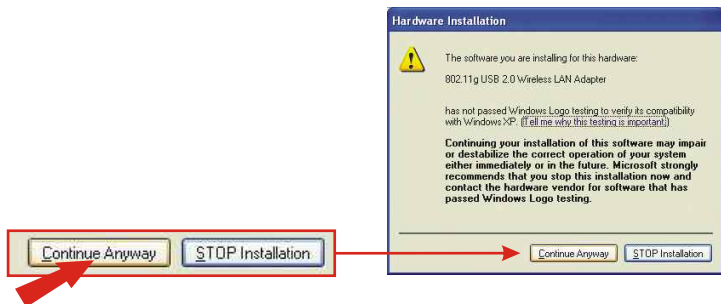
1. Peale seadistusprogrammi paigaldamist ühenda USB WiFi adapter arvuti USB porti. Ilmub Found New Hardware viisard. Veendu, et valitud on Install the software automatically ning et komplektis olev CD-plaat on arvuti CD-seadmes. Seejärel vajuta Next nupule.



2. Vali c:\windows\inf\sis163u.inf ja vajuta Next nupule.

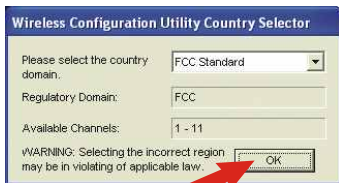


3. Ilmub hoiatus selle kohta, et paigaldatav seade ei ole veel sertifitseeritud ühilduma Windows XP-ga. Vali **Continue Anyway**.



Märkus: TRENDneti WiFi adapterid on läbinud põhjalikud katsetused kõigi toetatud Windowsi operatsioonisüsteemidega ja nende funktsionaalsus on heaks kiidetud.

4. Vali oma asukohale vastav region ja vajuta **OK** nupule.



5. Vajuta **Yes** nupule.



6. **Found New Hardware** viisard teatab, et USB WiFi adapteri tarkvara paigaldamine on lõppenud. Vajuta **Finish** nupule.

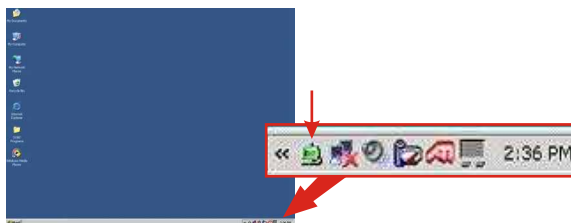


Märkus: Peale **Finish** nupule vajutamist ilmub süsteemisalve raadiovõrgu ikoon (ekraani paremal all nurgas kella kõrval). Kui seda ei ilmu, taaskäivita arvuti. Jätka peatükist 5 “WiFi seadistamine.”

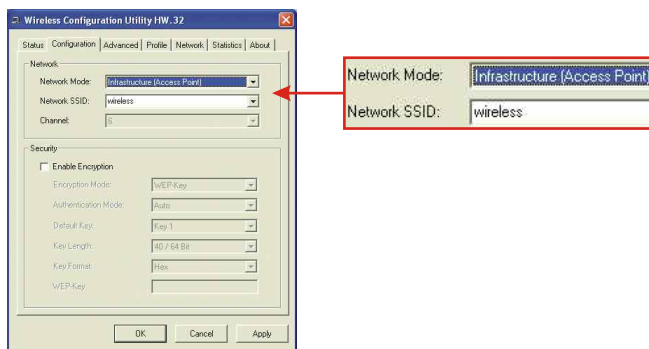
5. WiFi seadistamine

Infrastruktuuri režiimis (PC ja accesspointi vaheline ühendus)

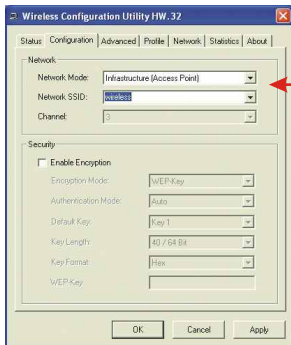
1. Topeltkliki raadiovõrgu ikooni süsteemisalves (ekraani paremas alumises nurgas kella kõrval).



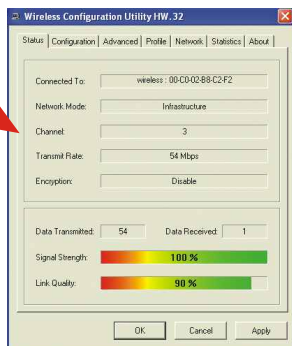
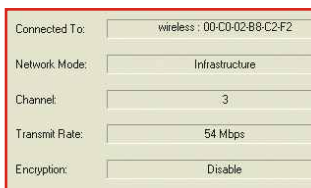
2. Ava Configuration sakk. Vali võrgu režiimiks **Infrastructure (Access Point)**.



3. Vali võrgu SSID, mis vastab sinu accesspointi SSID-ile (Kui sa pole kindel, milline on sinu accesspointi SSID, vaata see järele accesspointi seadistustest). Vajuta **Apply** nupule.

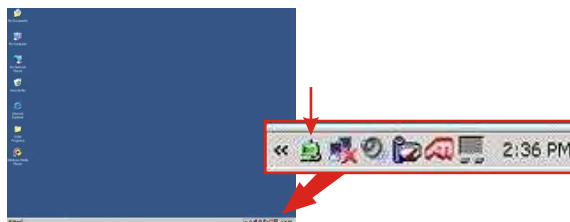


4. Vali Status sakk. Kui sa näed ühenduse infot, on WiFi kaardi seadistamine lõppenud.

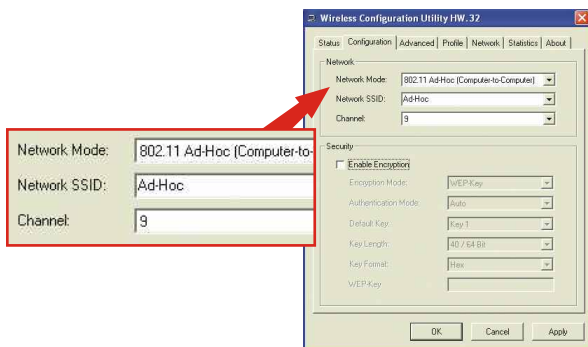


Ad-Hoc Režiimis (PC ja PC vaheline ühendus)

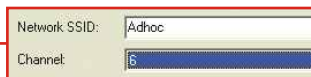
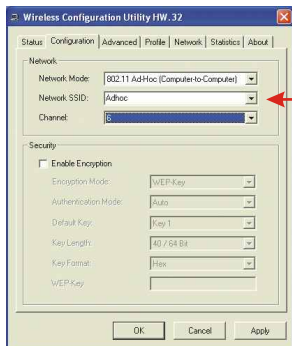
1. Topeltkliki raadiovõrgu ikooni süsteemisalves (ekraani paremas alumises nurgas kella kõrval).



2. Ava Configuration sakk. Vali võrgu režiimiks **802.11 Ad-Hoc (Computer to Computer)**.

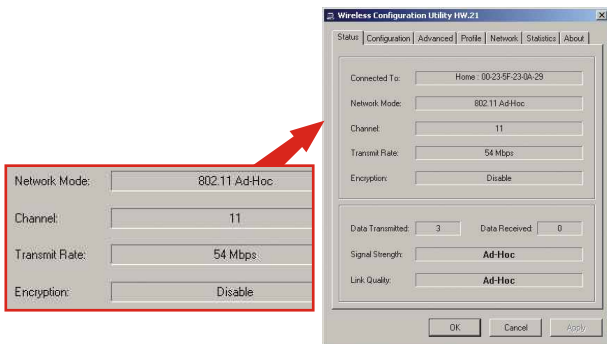


3. Vali võrgu SSID, mis vastab selle kaardi SSID-le, millega soovid ühendust luua (Kui sa pole kindel, milline on teise kaardi SSID, vaata see järele tolle kaardi seadistustest).



4. Kuna sa seadistad Ad-Hoc võrku, pead valima kanali. Soovitame valida kanali vahemikust 1-6. Vajuta **Apply** nupule.

5. Vali **Status** sakk. Kui sa näed ühenduse infot, on WiFi kaardi seadistamine lõppenud.



Sinu WiFi adapter on nüüd seadistatud ja kasutamiseks valmis!

Troubleshooting

Q1: I completed all the steps in the quick installation guide, but my wireless USB Adapter isn't connecting to my access point. What should I do?

A1: First, you should first verify that the Network SSID matches your wireless router or access point's SSID. Second, you should check your TCP/IP properties to ensure that Obtain an IP address automatically is selected. Third, you can click on the Site Survey link to check and see if there are any available wireless networks listed.

Q2: Windows is unable to recognize my hardware. What should I do?

A2: Make sure your computer meets the minimum requirements as specified in Section 1 of this quick installation guide. Also, you must install the wireless configuration utility (as described in Section 3) before connecting the wireless USB Adapter.

Q3: I cannot open the wireless configuration utility. What should I do?

A3: Go to your device manager (control panel → system) to make sure the adapter is installed properly. If you see a networking device with a yellow question mark or exclamation point, you will need to reinstall the device and/or the drivers.

If you still encounter problems, please refer to the User's Guide CD-ROM or contact technical support.

Certifications

This equipment has been tested and found to comply with FCC and CE Rules. Operation is subject to the following two conditions:

- (1) This device may not cause harmful interference.
- (2) This device must accept any interference received.
Including interference that may cause undesired operation.

NOTE: THE MANUFACTURER IS NOT RESPONSIBLE FOR ANY RADIO OR TV INTERFERENCE CAUSED BY UNAUTHORIZED MODIFICATIONS TO THIS EQUIPMENT. SUCH MODIFICATIONS COULD VOID THE USER'S AUTHORITY TO OPERATE THE EQUIPMENT.





TRENDnet

Product Warranty Registration

Please take a moment to register your product online.
Go to TRENDnet's website at <http://www.TRENDNET.com>

TRENDnet Technical Support

US/Canada Support Center

Contact

Telephone: 1(888) 777-1550

Fax: 1(310) 626-6267

Email: support@trendnet.com

Tech Support Hours

7:30am - 6:00pm Pacific Standard Time

Monday - Friday

European Support Center

Contact

Telephone

Deutsch : +49 (0) 6331 / 268-460

Français : +49 (0) 6331 / 268-461

0800-907-161 (numéro vert)

Español : +49 (0) 6331 / 268-462

English : +49 (0) 6331 / 268-463

Italiano : +49 (0) 6331 / 268-464

Dutch : +49 (0) 6331 / 268-465

Eesti : +372-6593613 (9.00AM to 5:00PM)

Fax: +49 (0) 6331 / 268-466

Tech Support Hours

8:00am - 6:00pm Middle European Time

Monday - Friday

TRENDnet

3135 Kashiwa Street, Torrance, CA 90505

<http://www.TRENDNET.com>