




Guía de instalación rápida 

**TEW-421PC**  
**TEW-423PI**  
C1.2

# Table of Contents

Español	1
1. Antes de iniciar	1
2. Cómo se instala	2
3. Cómo usar el adaptador inalámbrico	4
Troubleshooting	6
Wireless Tips	7



## Contenidos del paquete

- TEW-421PC / TEW-423PI
- CD-ROM (Herramienta y controladores)
- Guía de instalación rápida multilingüe

## Requisitos del sistema

- Ranura para Tarjeta Tipo II CardBus de 32 bits (TEW-421PC)
- Ranura PCI 2.2 de 32 bits (TEW-423PI)
- Unidad de CD-ROM
- CPU: 1GHZ o superior (Windows 7) / 800MHz o superior (Windows Vista) / 300 MHz o superior (Windows XP/2000/ME/98SE)
- Memoria: 1 GB RAM o superior (Windows 7) / 512MB RAM o superior (Windows Vista) / 256 MB o superior (Windows XP/2000/ME/98SE)
- Windows 7 (32/64-bit) / Vista(32/64-bit) / XP(32/64-bit) / 2000 / ME / 98SE

## 2. Cómo se instala

¡Importante! NO instale el TEW-421PC / TEW-423PI hasta que no se le indique.

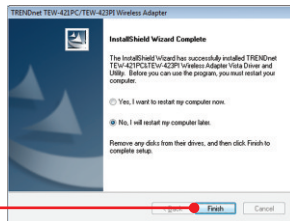
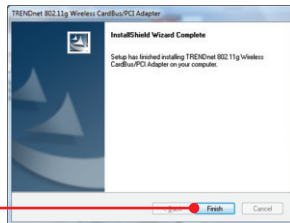
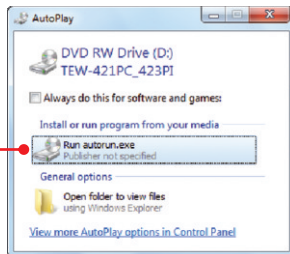
1. Introduzca el CD-ROM del controlador y de la herramienta en la unidad de CD-ROM de su PC.

2. Haga clic en **Run autorun.exe** (sólo para Windows 7/Vista).

3. Haga clic en **Install Utility** (instalar herramienta). Entonces, haga clic en su sistema operativo.

4. Siga las instrucciones del **InstallShield Wizard** (asistente de Install Shield) y luego haga clic en **Finish** (Finalizar).

5. Seleccione **No, I will restart my computer later** (No, reiniciaré mi PC más tarde), luego haga clic en **Finish** (Finalizar). (Sólo para ME/98SE).



ENGLISH

FRAANÇAIS

DEUTSCH

ESPAÑOL

РУССКИЙ

## TEW-421PC

6. Apague su PC.

7. Introduzca la tarjeta PC de manera firme en la ranura para tarjeta PC disponible de su PC notebook, después ENCIENDA el PC y espere hasta que aparezca el escritorio de Windows.

8. Vaya al Paso 12.



## TEW-423PI

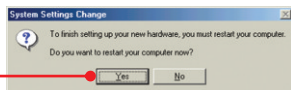
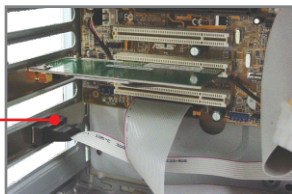
9. Apague su PC.

10. Abra la caja de su PC.

11. Introduzca la tarjeta PCI de manera firme en la ranura para tarjeta PCI disponible de su PC desktop, después ENCIENDA el PC y espere hasta que aparezca el escritorio de Windows.

12. Los archivos controladores se instalarán automáticamente.

13. Haga clic en **Yes** (sí) para reiniciar el ordenador (sólo en Windows 98SE y Me)



### 3. Cómo usar el adaptador inalámbrico

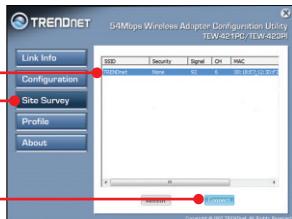
#### Windows 7 / Vista / XP / 2000

**Nota:** Si está ejecutando Windows XP, debe desactivar la Configuración cero inalámbrica (Wireless Zero Configuration). Consulte la pregunta 4 del apartado Resolución de problemas.

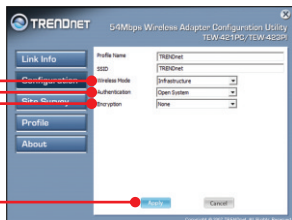
1. En la esquina derecha inferior de la pantalla, haga doble clic en el icono Wireless Adapter Configuration Utility (Herramienta de configuración del adaptador inalámbrico).



2. Haga clic en **Site Survey**. Seleccione la red inalámbrica deseada y después haga clic en **Connect** (Conectar).



3. Si el punto de acceso está habilitado con cifrado, seleccione la Autenticación y Cifrado, introduzca la clave de cifrado y a continuación haga clic en **Apply** (Aplicar).

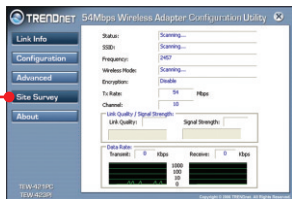


#### Windows ME / 98SE

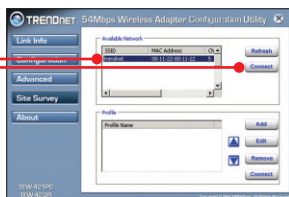
1. En la esquina derecha inferior de la pantalla, haga doble clic en el icono **Wireless Adapter Configuration Utility** (Herramienta de configuración del adaptador inalámbrico).



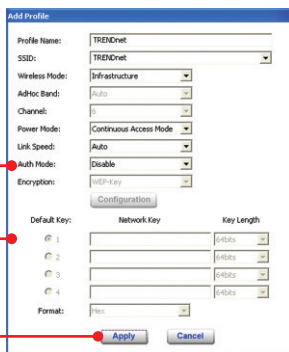
2. Haga clic en **Site Survey**.



3. Haga clic en la **SSID** que corresponda con el punto de acceso inalámbrico que usted posee y luego pulse **Connect** (Conectar).



4. Si el punto de acceso está habilitado con cifrado, seleccione la Autenticación y Cifrado, introduzca la clave de cifrado y a continuación haga clic en **Apply** (Aplicar).



## La configuración inalámbrica ha finalizado.

Para obtener información más detallada sobre la configuración y las opciones de configuración avanzadas de la **TEW-421PC / TEW-423PI**, por favor consulte la sección de resolución de problemas en el CD-ROM de la Guía del Usuario, o el sitio Web de TRENDnet en <http://www.trendnet.com>.

## Registre su producto

Para asegurar los más altos niveles de servicio y apoyo al cliente, registre su producto en línea en: [www.trendnet.com/register](http://www.trendnet.com/register) Gracias por elegir TRENDnet.

## 1. I inserted the Utility & Driver CD-ROM into my computer's CD-ROM Drive and the installation menu does not appear automatically. What should I do?

1. For Windows 7, if the installation menu does not appear automatically, click on the Windows Icon on the bottom left hand corner of the screen., click the "Search programs and files" box, and type D:\autorun.exe, where "D" in "D:\autorun.exe" is the letter assigned to your CD-ROM Drive, and then press the ENTER key on your keyboard.
2. For Windows Vista, if the installation menu does not appear automatically, click **Start**, click the **Start Search** box, and type **D:\autorun.exe** where "D" in "D:\autorun.exe" is the letter assigned to your CD-ROM Drive, and then press the ENTER key on your keyboard.
3. For Windows 2000/XP, if the installation menu does not appear automatically, click **Start**, click **Run**, and type **D:\autorun** where "D" in "D:\autorun.exe" is the letter assigned to your CD-ROM Drive, and then press the ENTER key on your keyboard.

## 2. I completed all the steps in the quick installation guide, but my Wireless Adapter is not connecting to my access point. What should I do?

1. Verify that the Network Name (SSID) matches your wireless router or access point's Network Name (SSID).
2. Check your TCP/IP properties to ensure that Obtain an IP address automatically is selected.
3. Open the Wireless Adapter Configuration Utility icon, click Site Survey and then click refresh to check and see if there are any available wireless networks listed.
4. Your wireless network may be encrypted. Contact your network administrator to find the encryption type and encryption key. Then click on **Configuration (Windows Vista/XP/2000)** or **Advanced (Windows ME/98SE)** to enter the encryption key.

## 3. Windows is unable to recognize my hardware. What should I do?

1. Make sure your computer meets the minimum requirements as specified in Section 1 of this quick installation guide.
2. You must complete the installation of the wireless adapter configuration utility (as described in Section 2) before connecting the Wireless Adapter to your computer.
3. Connect the Wireless Adapter to a different PCI/PC Card slot on your computer.

## 4. I cannot open the wireless adapter configuration utility. What should I do?

1. Access your device manager to make sure the adapter is installed properly. If you see a networking device with a yellow question mark or exclamation point, you will need to reinstall the device and/or the drivers. To access the device manager on Windows 7, click on the Windows icon on the bottom left hand corner of the screen, right-click on Computer, click Properties and then click **Device Manager**. To access the device manager on Windows Vista, right-click on **Computer**, click **Properties** and then click **Device Manager**. To access the device manager on Windows 2000/XP, right-click **My Computer**, click **Properties**, click the **Hardware** tab, and then click **Device Manager**.
2. If you are running Windows XP, you need to disable wireless zero configuration. Go to **Control Panel -> Network Connections**. Right click on the **Wireless Network Connection** icon and select **Properties**. Click on the **Wireless Networks** tab and uncheck **Use windows to configure my wireless settings**. Then click **OK**.

If you still encounter problems or have any questions regarding the **TEW-421PC / TEW-423PI**, please refer to the User's Guide included on the Utility & Driver CD-ROM or contact TRENDnet's Technical Support Department.



The following are some general wireless tips to help minimize the impact of interference within an environment.

### **Assign your network a unique SSID**

Do not use anything that would be identifying like “Smith Family Network”. Choose something that you would easily identify when searching for available wireless networks.

### **Do not turn off the SSID broadcast**

The SSID broadcast is intended to be on and turning it off can cause connectivity issues. The preferred method of securing a wireless network is to choose a strong form of encryption with a strong and varied encryption key.

**Note: after setting up the SSID, encryption type and encryption key/passphrase, please make a note of them for future reference. You will need this information to connect your wireless computers to the wireless router/access point.**

### **Change the channel**

Most wireless access points and routers are defaulted to channel 6. If you have a site survey tool that will display the channels you can plan your channel selection around neighboring access points to minimize interference from them. If your site survey tool does not display the channel try using channels 1 or 11.

### **Change the channel bandwidth**

If you are using an 802.11n router or access point you can also make the following changes. Change the channel bandwidth to 20/40MHz. This will provide the highest possible performance using an 802.11n device. Also, if using 802.11n you should be securing the network with WPA2 security.

**Note: Due to Wi-Fi certification considerations if you choose WEP, WPA or WPA2-TKIP encryption this device may operate in legacy wireless mode (802.11b/g). You may not get 802.11n performance as these forms of encryption are not supported by the 802.11n specification.**

### **Avoid stacking hardware on top of each other to prevent overheating issues**

Maintain enough free space around the hardware for good ventilation and airflow. There should also be plenty of free space around the antennas to allow the wireless signal to propagate. Please also make sure that the wireless hardware is not placed in any type of shelving or enclosures.

**There are a number of other environmental factors that can impact the range of wireless devices.**

1. Adjust your wireless devices so that the signal is traveling in a straight path, rather than at an angle. The more material the signal has to pass through the more signal you will lose.
2. Keep the number of obstructions to a minimum. Each obstruction can reduce the range of a wireless device. Position the wireless devices in a manner that will minimize the amount of obstructions between them.
3. Building materials can have a large impact on your wireless signal. In an indoor environment, try to position the wireless devices so that the signal passes through less dense material such as dry wall. Dense materials like metal, solid wood, glass or even furniture may block or degrade the signal.
4. Antenna orientation can also have a large impact on your wireless signal. Use the wireless adapter's site survey tool to determine the best antenna orientation for your wireless devices.
5. Interference from devices that produce RF (radio frequency) noise can also impact your signal. Position your wireless devices away from anything that generates RF noise, such as microwaves, HAM radios, Walkie-Talkies and baby monitors.
6. Any device operating on the 2.4GHz frequency will cause interference. Devices such as 2.4GHz cordless phones or other wireless remotes operating on the 2.4GHz frequency can potentially drop the wireless signal. Although the phone may not be in use, the base can still transmit wireless signals. Move the phone's base station as far away as possible from your wireless devices.

If you are still experiencing low or no signal consider repositioning the wireless devices or installing additional access points. The use of higher gain antennas may also provide the necessary coverage depending on the environment.

## Certifications

This equipment has been tested and found to comply with FCC and CE Rules.

Operation is subject to the following two conditions:

- (1) This device may not cause harmful interference.
- (2) This device must accept any interference received. Including interference that may cause undesired operation.



(01)07898431242501

0950-04-2375

Este equipamento opera em caráter secundário, isto é, não tem direito a proteção contra interferência prejudicial, mesmo de estações do mesmo tipo, e não pode causar interferência a sistemas operando em caráter primário



(01)07898431242518

0949-04-2375

Este equipamento opera em caráter secundário, isto é, não tem direito a proteção contra interferência prejudicial, mesmo de estações do mesmo tipo, e não pode causar interferência a sistemas operando em caráter primário



Waste electrical and electronic products must not be disposed of with household waste. Please recycle where facilities exist. Check with you Local Authority or Retailer for recycling advice.



**NOTE:** THE MANUFACTURER IS NOT RESPONSIBLE FOR ANY RADIO OR TV INTERFERENCE CAUSED BY UNAUTHORIZED MODIFICATIONS TO THIS EQUIPMENT. SUCH MODIFICATIONS COULD VOID THE USER'S AUTHORITY TO OPERATE THE EQUIPMENT.

### ADVERTENCIA

En todos nuestros equipos se mencionan claramente las características del adaptador de alimentación necesario para su funcionamiento. El uso de un adaptador distinto al mencionado puede producir daños físicos y/o daños al equipo conectado. El adaptador de alimentación debe operar con voltaje y frecuencia de la energía eléctrica domiciliar existente en el país o zona de instalación.



## Product Warranty Registration

Please take a moment to register your product online.  
Go to TRENDnet's website at <http://www.trendnet.com/register>