

TEW-421PC/TEW-423PI

54Mbps 802.11g Wireless PC Card/54Mbps 802.11g PCI Adapter
Quick Installation Guide

Guide d'installation rapide pour le
Carte PC Sans Fil 54Mbps 802.11g/Adaptateur PCI Sans Fil 54Mbps 802.11g

Anleitung zur Schnellinstallation des
54Mbit 802.11g Wireless PC Card/54Mbit 802.11g PCI Adapter

Guía de Instalación Rápida para
Tarjeta PC Wireless de 54Mbps 802.11g/Adaptador PCI de 54Mbps 802.11g

Version 08.11.04



TRENDnet[®]
TRENDware, USA
What's Next in Networking

Table of Contents

English	1
1. Prepare for Installation	1
2. Install Wireless Configuration Utility	2
3. Install Hardware	3
4. Install Drivers	4
5. Wireless Configuration	14
Troubleshooting	17

English QIG

1. Prepare for Installation

Thank you for purchasing the TEW-421PC/TEW-423PI. Your new wireless network adapter will allow you to connect to 802.11g and 802.11b networks and begin wirelessly sharing the Internet, files, and other resources.

This guide will help you set up and configure your wireless card. Following this installation should be quick and easy. If you run into problems, please refer to the Troubleshooting section or the more detailed installation procedures on the User's Guide CD-ROM. If you need further technical support, please visit www.TRENDNET.com or call by phone.

Verify Package Contents

Please make sure you have everything in the box:

TEW-421PC



TEW-423PI



Verify Equipment

Before installing this PCI Card or PC Card, you should have a :

1. Computer with an available 32-bit CardBus (TEW-421PC) or PCI slot (TEW-423PI)
2. 300 MHz processor and 32 MB of memory (Recommended)
3. CD-ROM drive.
4. Properly-installed CardBus Controller (for TEW-421PC only)
5. 802.11g Access Point (for Infrastructure Mode) or another 802.11g wireless adapter (for Ad-Hoc/Peer-to-Peer networking mode).

Important! DO NOT install the PCI adapter or PC Card in the computer until instructed to do so. Please follow the instructions in Section 2 before installing the adapter into your computer.

2. Install Wireless Configuration Utility

Windows 98SE/ME/2000/XP

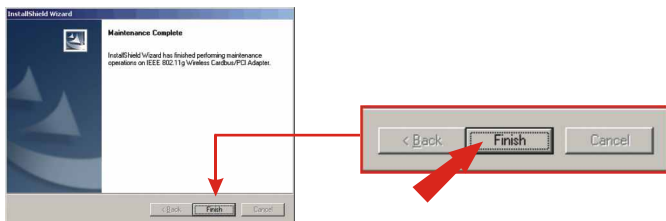
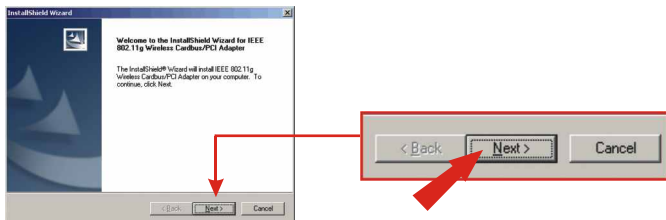
1. Insert the TEW-421PC/423PI CD-ROM into your computer's CD-ROM drive; the installation menu window will appear automatically. If the window does not appear automatically, click **Start**, click **Run**, and type **E:\Autorun.exe** in the text-field. Click **OK** to start the installation.

NOTE: Replace “E” in “E:\Autorun.exe” with whichever letter is assigned to your CD-ROM drive.

2. On the Installation Menu, click **Install Utility**.



3. Follow the Install Shield Wizard's instructions to install the wireless configuration utility.



3. Install Hardware

If you are installing the 421PC Wireless PC Card:

Proceed only if you have already completed the steps in Section 2

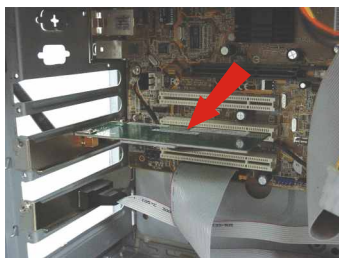
1. Shut down your computer.
2. Insert the PC Card firmly into your notebook PC's open PC Card slot. Only the plastic end-piece should protrude from the slot.
3. Reboot your computer.



If you are installing the 423PI Wireless PCI Card:

Proceed only if you have already completed the steps in Section 2

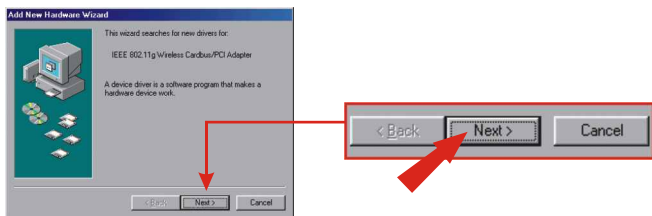
1. Shut down your computer.
2. Open your computer case to reveal the motherboard and expansion slots. (Please refer to your computer's user manual if you need help opening the case)
3. Insert the wireless card into one of motherboard's free PCI slots. Press down firmly and evenly on the card until it snaps into place.
4. Screw the PCI card's metal bracket into your case with a standard bracket screw. Attach the included antenna to the connector on the back of your card.
5. Close your computer case, and reboot your computer.



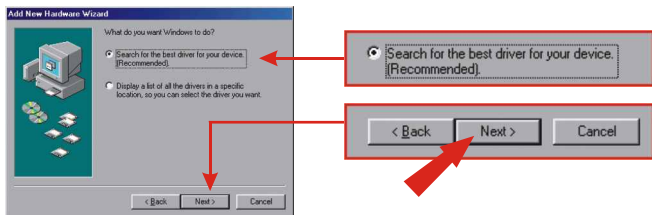
4. Install Drivers

Windows 98SE/ME

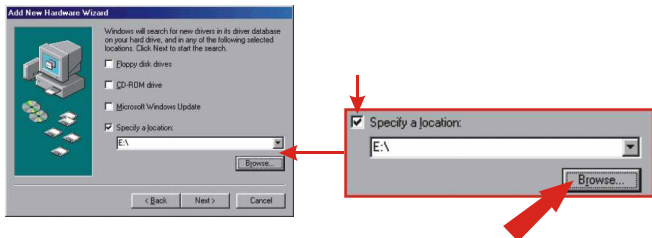
1. After your computer reboots, the "Add New Hardware Wizard" will appear. Click **Next**.



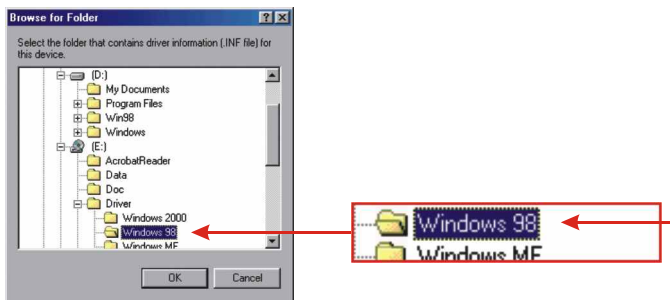
2. Select Search for the best driver for your device and click **Next**.



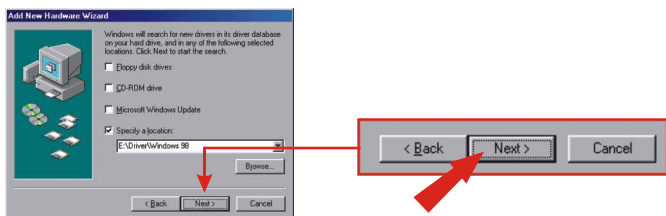
3. Select Specify a location, and click **Browse**.



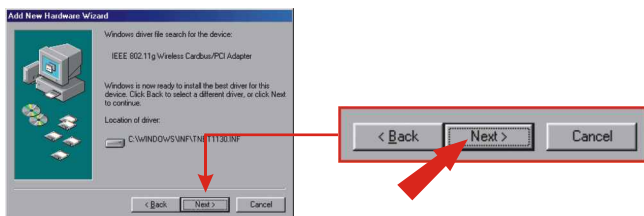
4. If the TEW-421PC/423PI CD-ROM is not in your CD-ROM drive, put it into your CD-ROM drive now. From the "Browse for Folder" window that has appeared, double-click the icon for the CD-ROM drive containing the TEW-421PC/423PI CD-ROM.
5. Double-click the TEW-421PC/423PI CD-ROM's Driver folder; then, double-click the **Windows 98/Windows ME** folder, and click **OK**.



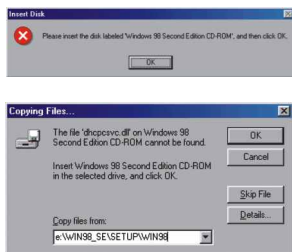
6. Click **Next** on the following screen.



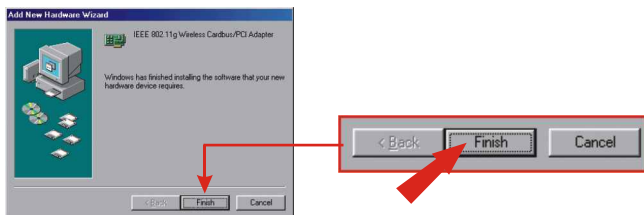
7. Then, click **Next** again.



NOTE: You may be asked to insert your Windows 98/Windows ME CD-ROM. If this is the case, insert your Windows 98/Windows ME CD-ROM and follow the onscreen prompts.

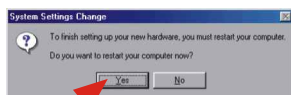


8. A popup message will inform you that Windows has installed the necessary software. Click **Finish**.

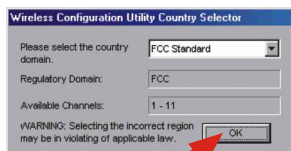


9. Windows will ask you if you want to restart your computer. Click **Yes**.

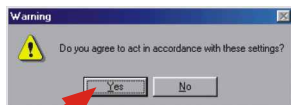
NOTE: If this prompt does not appear, you must manually restart your computer.



10. After your computer reboots, the "Wireless Configuration Utility Country Selector" will automatically appear. Select the Country Domain that is most appropriate for the region in which you plan to operate your wireless card. (Default: FCC Standard (USA)) Click **OK**.



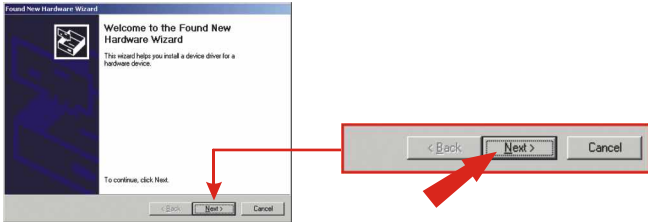
11. A Warning prompt will appear. Click **Yes**.



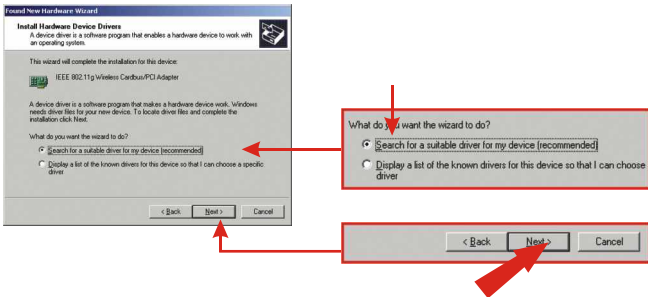
12. Continue to Section 5 of this Quick Installation Guide to continue configuring your wireless card.

Windows 2000

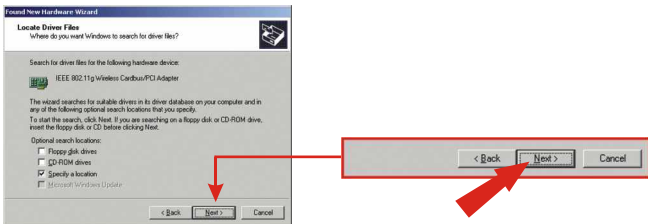
1. After your computer reboots, the "Found New Hardware Wizard" will appear. Click **Next**.



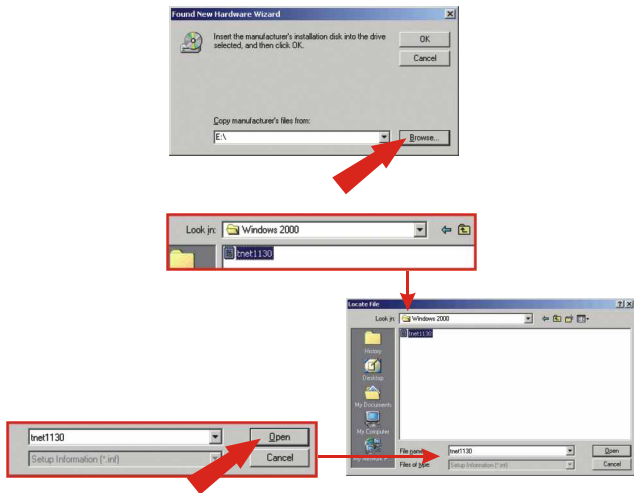
2. Ensure that Search for a suitable driver for my device is selected and that the TEW-421PC/423PI CD-ROM is in your CD-ROM drive. Then, click **Next**.



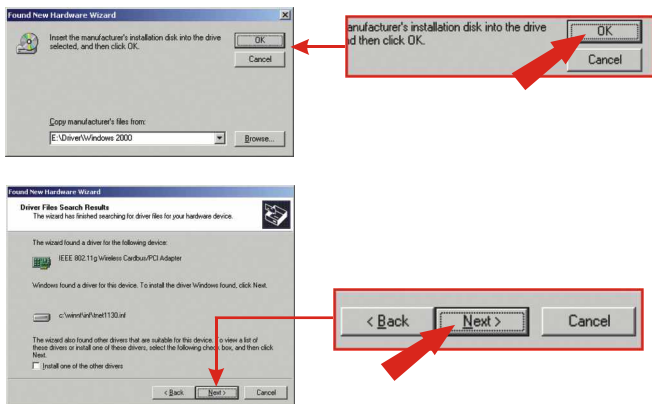
3. On the next screen, select Specify a location, and click **Next**.



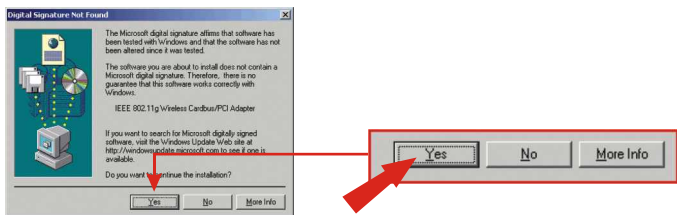
4. Click the **Browse** button on the window that pops up. Double-click your CD-ROM drive, double-click Driver, and double-click Windows 2000. In the Windows 2000 folder, select “tnet1130” and click **Open**.



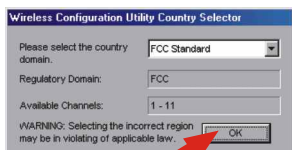
5. Click **OK**. After the wizard locates the appropriate driver, click **Next**.



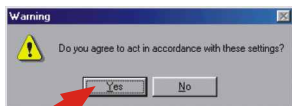
6. A message will tell you that the driver you're about to install “does not contain a digital signature” and will ask you if you want to continue the installation. Click **Yes**.



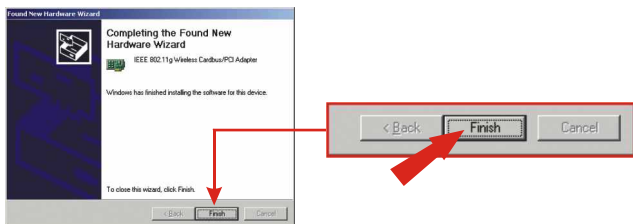
7. The “Wireless Configuration Utility Country Selector” will automatically appear. Select the Country Domain that is most appropriate for the region in which you plan to operate your wireless card. (Default: FCC Standard (USA)) Click **OK**.



8. A Warning prompt will appear. Click **Yes**.



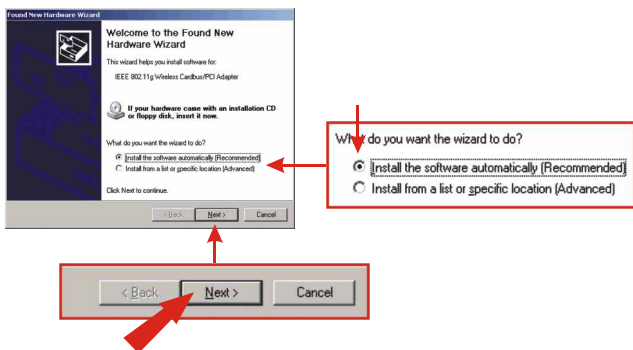
9. The “Found New Hardware Wizard” will tell you that it has finished installing the software for your new device. Click **Finish**.



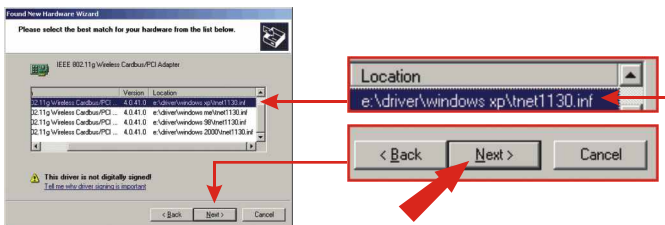
10. Continue to Section 5 of this Quick Installation Guide to continue configuring your wireless card.

Windows XP

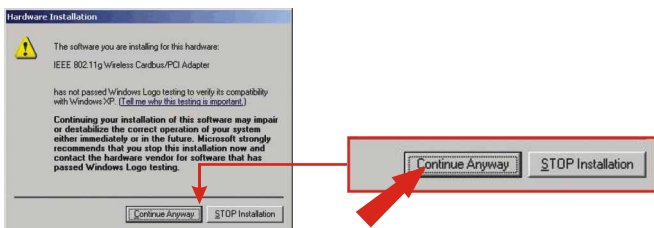
1. After your computer reboots, the “Found New Hardware Wizard” will appear. Verify that Install the software automatically is selected and that the TEW-421PC/423PI CD-ROM is in your CD-ROM drive. Then, click **Next**.



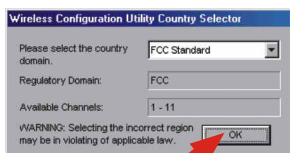
2. When you are prompted to choose a driver from a list of compatible drivers, choose the one that is located in the TEW-421PC/423PI CD-ROM's Windows XP folder, and click **Next**.



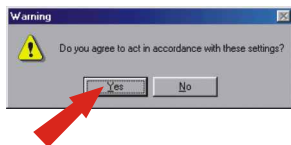
3. A warning message will tell you that the device you're installing has not yet been certified for Windows XP compatibility. Click **Continue Anyway**.



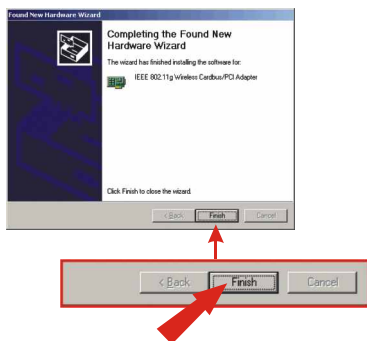
4. The "Wireless Configuration Utility Country Selector" will automatically appear. Select the Country Domain that is most appropriate for the region in which you plan to operate your wireless card. (Default: FCC Standard (USA)) Click **OK**.



5. A Warning prompt will appear. Click **Yes**.



6. The "Found New Hardware Wizard" will tell you that it has finished installing the software for your IEEE 802.11g Wireless Cardbus/PCI Adapter. Click **Finish**.



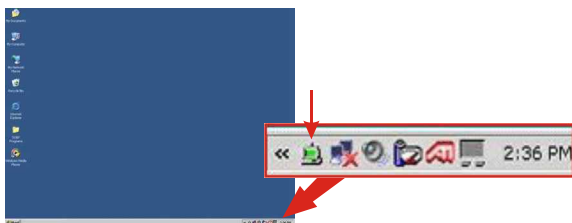
7. Continue to Section 5 of this Quick Installation Guide to continue configuring your wireless card.

NOTE: Some countries may have domain that is different from the domains in the above table. It is users' responsibility to ensure that the wireless channel configuration is compliant with the regulatory standards of these countries.

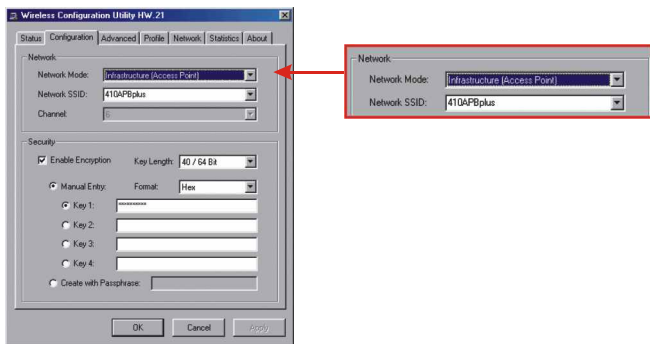
5. Wireless Configuration

Infrastructure Mode (PC-to-Access Point connection)

1. Double-click the wireless computer icon in your system tray (next to the clock in the bottom right corner of your screen).

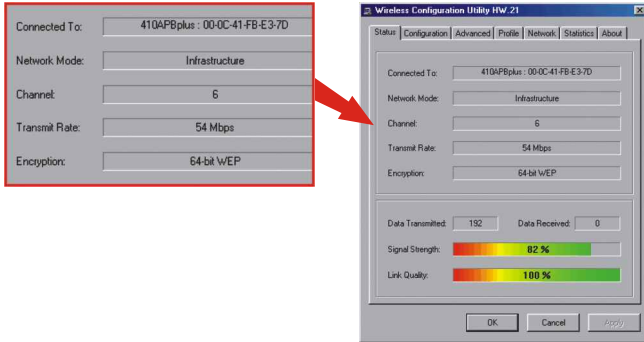


2. Click the Configuration Tab. Select **Infrastructure** (Access Point) as the Network Mode.



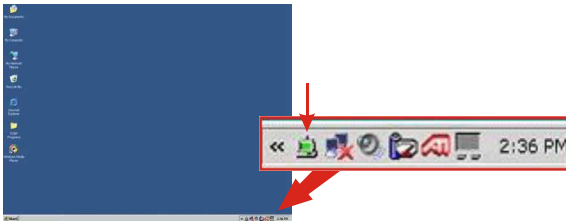
3. Select a Network SSID that matches the SSID of your Access Point. (If you are unsure of your Access Point's SSID, refer to your Access Point settings) Click **Apply**.

4. Click the Status tab; if you see connection information, your card's wireless configuration is complete.

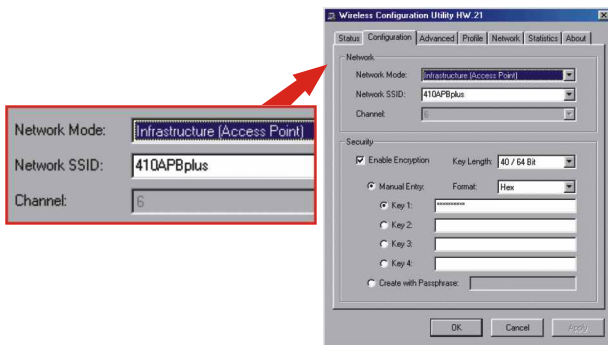


Ad-Hoc Mode (PC-to-PC connection)

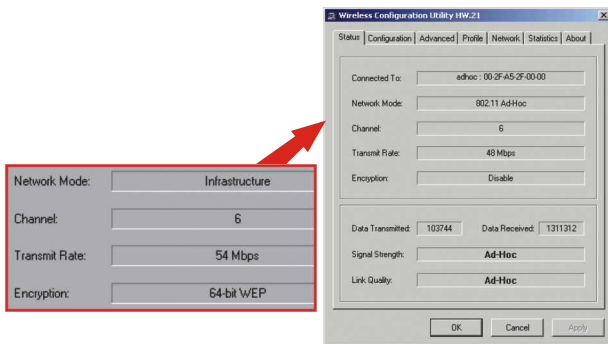
1. Double-click the wireless computer icon in your system tray (next to the clock in the bottom right corner of your screen).



2. Click the Configuration Tab. Select **802.11 Ad-Hoc** (Computer to Computer) as the Network Mode.



3. Select a Network SSID that matches the SSID of the wireless card you will be connecting to. (If you are unsure of your other wireless card's SSID, refer to that card's settings)
4. Because you are configuring an Ad-Hoc network, you must select a Channel. It is recommended that you select a channel number from 1-6. Click **Apply**.
5. Click the Status tab; if you see connection information, your card's wireless configuration is complete.



Your Wireless Network Adapter is now configured and ready for use!

6. Troubleshooting

For help with advanced features such as URL Filtering, Access Control and Virtual Server settings, please refer to your User's Guide CD-ROM.

Q1. I completed all the steps in the quick installation guide, but my card isn't connecting to my access point. What should I do?

A1. You should first verify that the Network SSID matches your wireless router or access point's SID. If they already match, you should check your TCP/IP properties to ensure that **Obtain an IP address automatically** is selected. Refer to your Windows User's Manual if you are unable to locate your TCP/IP properties.

Q2. Windows is unable to recognize my hardware. What should I do?

A2. Make sure your computer meets the minimum requirements as specified in Section 1 of this quick installation guide. Also, you must install the wireless configuration utility (as described in Section 2) BEFORE you physically install your network card. Lastly, you may consider moving the card to a different PCI/PC Card Slot.

Q3. I cannot open the wireless configuration utility. What should I do?

A3. Go to your device manager (control panel system) to make sure the adapter is installed properly. If you see a networking device with a yellow question mark or exclamation point, you will need to reinstall the device and/or the drivers.

If you still encounter problems, please refer to the User's Guide CD-ROM or contact technical support.

Contact Technical Support

Telephone: +1-310-626-6252

Fax: +1-310-626-6267

Website: www.TRENDNET.com

E-mail: support@trendware.com

Technical Support Hours

7:00AM ~ 6:00PM, Monday through Friday

Pacific Standard Time (except holidays)

TRENDnet[®]

TRENDware, USA

What's Next in Networking

Product Warranty Registration

Please take a moment to register your product online.
Go to TRENDware's website at <http://www.TRENDNET.com>

TRENDware International, Inc.

3135 Kashiwa Street

Torrance, CA 90505

<http://www.TRENDNET.com>