

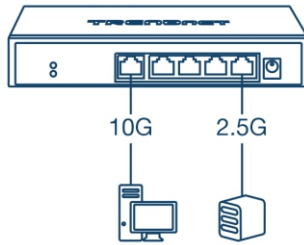
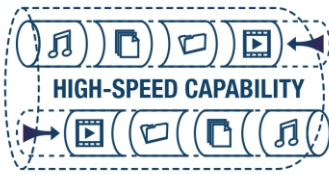


## 5-Port 10G Switch

TEG-S750 (v1.0R)

- 5 x 10G RJ-45 ports
- Supports IEEE 802.3bz 2.5G/5G-BASE-T over cat5e cabling (or better)
- Supports IEEE 802.3an 10G-BASE-T over cat6a cabling (or better)
- 100Gbps switching capacity
- Fanless design for silent operation

TRENDnet's 5-Port 10G Switch, model TEG-S750, provides advanced high bandwidth performance, ease of use, and reliability. The TEG-S750 10G switch features five dedicated 10G ports for high-speed network connections with a 100Gbps switching capacity. Having a sturdy compact metal housing and fanless design, the 10G switch is a cost-effective switch solution for high-speed 10 Gigabit network connections. This versatile unmanaged 10G switch also supports 2.5G/5G-BASE-T connections for faster throughput over your existing Cat5e cabling (or better).



### 10G Ports

Provides a cost-effective solution in adding 10G link capability with five 10G ports for high-speed connections over Cat6a cabling (or better).

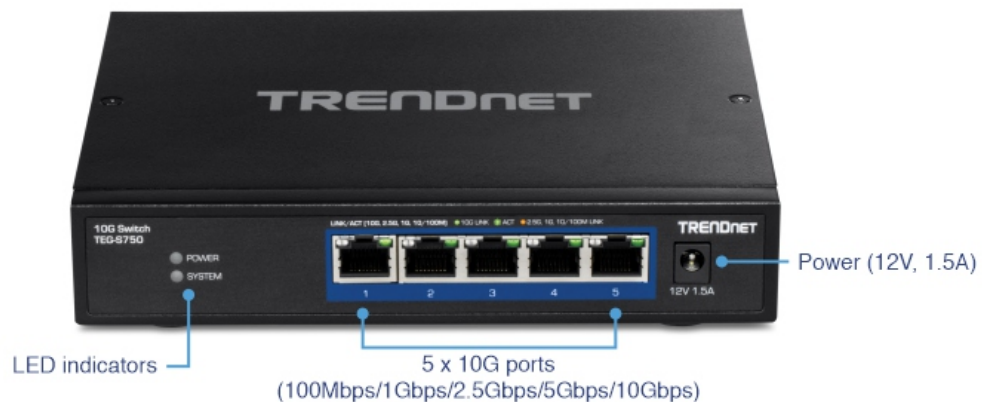
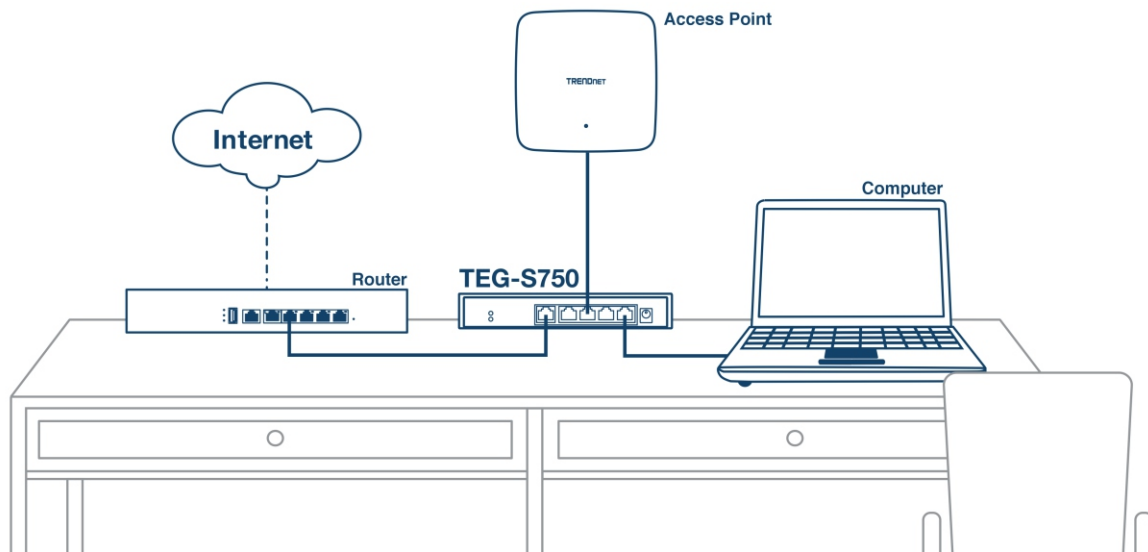
### Multi-Gigabit Support

This versatile unmanaged 10G switch also supports 2.5G/5G-BASE-T connections for faster speeds over your existing Cat5e cabling (or better).

### Fanless

Convenient fanless design lowers energy consumption and costs, and eliminates distracting noise for silent operation.

## NETWORKING SOLUTION



## FEATURES



### 10G Ports

Provides a cost-effective solution in adding 10G link capability with five 10G ports for high-speed connections over Cat6a cabling (or better)



### Multi-Gigabit Support

This versatile unmanaged 10GbE switch also supports 2.5G/5G-BASE-T connections for faster speeds over your existing Cat5e cabling (or better)



### Fanless

Fanless design lowers energy consumption and eliminates noise for silent operation



### Jumbo Frame

Sends larger packets, or Jumbo Frames (up to 12KB), for increased performance



### Housing Design

Sturdy metal housing on the 10 gigabit Ethernet switch / 2.5G switch combo is also compact and lightweight



### Switching Capacity

The 10GB ethernet switch supports a 100Gbps switching capacity



### LED Indicators

LED indicators conveniently convey port status on the 10G switch

## SPECIFICATIONS

### Standards

- IEEE 802.3u
- IEEE 802.3ab
- IEEE 802.3an
- IEEE 802.3az
- IEEE 802.3bz

### Device Interface

- 5 x 10G ports (100Mbps/1Gbps/2.5Gbps/5Gbps/10Gbps)
- LED indicators

### Throughput & Distance

- Cat5e Cabling: 1Gbps/2.5Gbps @ 100m (328 ft.)
- Cat6 Cabling: 10Gbps @ 50m (164 ft.)\*
- Cat6a Cabling: 10Gbps @ 100m (328 ft.)\*

### Data Transfer Rate

- Fast Ethernet: 100Mbps (half duplex), 200Mbps (full duplex)
- Gigabit Ethernet: 2000Mbps (full duplex)
- 2.5 Gigabit Ethernet: 5Gbps (full duplex)
- 5 Gigabit Ethernet: 10Gbps (full duplex)
- 10 Gigabit Ethernet: 20Gbps (full duplex)

### Performance

- Switch fabric: 60Gbps
- RAM buffer: 2MB
- MAC address table: 16K entries
- Jumbo frames: 9KB
- Forwarding mode: store and forward
- Forwarding rate: 44.64Mpps (64-byte packet size)

### Power

- Input: 100 – 240V AC, 50/60 Hz
- Output: 12V, 1A
- Max. Consumption: 11.9W

### MTBF

- 379,884 hours

### Operating Temperature

- 0° – 40° C (32° – 104° F)

### Operating Humidity

- Max. 95% non-condensing

### Dimensions

- 180 x 145 x 33mm (7 x 5.7 x 1.3 in.)

### Weight

- 2.33 kg (5.12 lbs.)

### Certifications

- CE
- FCC
- IC

### Warranty

- 3 year

### Package Contents

- TEG-S750
- Quick Installation Guide
- Power Adapter (12V, 1.5A)

\*Maximum distance of Cat6 and Cat6a cabling are references to IEEE 802.3an standard. Actual data throughput and distance will vary depending on the quality of the cable.

All references to speed are for comparison purposes only. Product specifications, size, and shape are subject to change without notice, and actual product appearance may differ from that depicted herein.