



Quick Installation Guide



TEG-S2620is

H/W: V1

Table of Contents

Deutsch	1
1. Bevor Sie anfangen	1
2. Installation der Hardware	2
3. Konfiguration des Umschalters	3
Troubleshooting	7

1. Bevor Sie anfangen



Packungsinhalt

- TEG-S2620is
- Mehrsprachige Installationsanleitung
- CD mit Bedienungsanleitung
- RS-232-Kabel
- Stromkabel
- Montagesatz für Gestell
- Gummifuesse

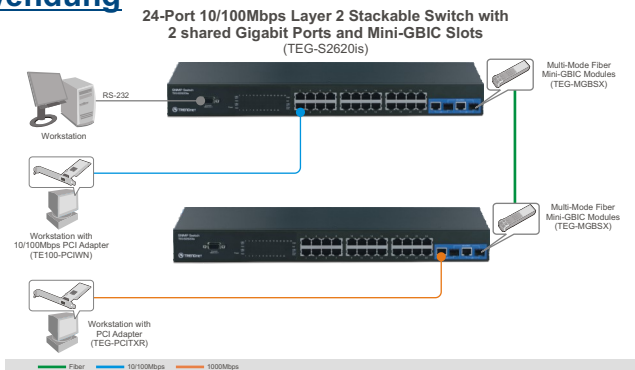
Systemanforderungen

- Webbrowser: Internet Explorer (6 oder 7)
- Computer mit korrekt installiertem Netzwerkadapter
- RJ-45-Netzwerkkabel

Optionale Geräte

- Standardmäßiges 19"-Gestell
- Mini-GBIC-Modul (z.B. TEG-MGBSX, TEG-MGBS10, TEG-MGBS40, TEG-MGBS80, TEG-MGBS10D3_D5, TEG-MGBS40D3_D5) für Mini-GBIC-Steckplätze

Anwendung



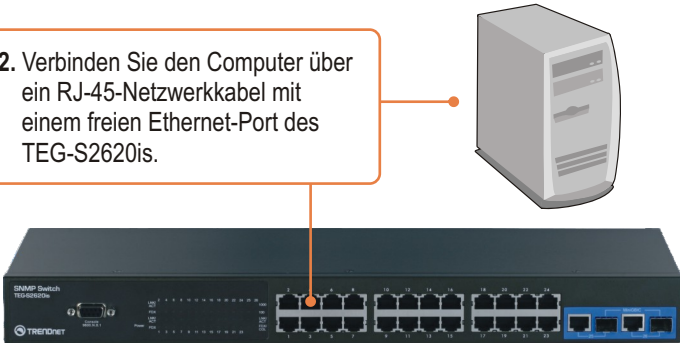
2. Installation der Hardware

Hinweis: Die Mini-GBIC Ports sind gemeinsam mit Gigabit Ethernet Ports 25 und 26 verbunden. D.h. bei Einsatz der Mini-GBIC-Ports, werden Ports 25 und 26 deaktiviert.

1. Schließen Sie das **Stromkabel** an der Rückseite des TEG-S2620is an und stecken Sie es in eine Steckdose.



2. Verbinden Sie den Computer über ein RJ-45-Netzwerkkabel mit einem freien Ethernet-Port des TEG-S2620is.



3. Kontrollieren Sie, dass die folgenden Anzeigen leuchten: **Stromversorgung, Betrieb** und **Link/Akt.**

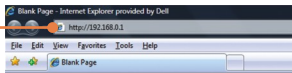


3. Configuration du Switch

Hinweis: Es ist zu empfehlen, den Switch von einem verdrahteten Computer aus zu konfigurieren. Bevor Sie den Switch konfigurieren können, müssen Sie dem Netzwerkadapter Ihres Computers eine statische IP-Adresse im Subnetz 192.168.0.x zuweisen. Die standardmäßige IP-Adresse des Switch lautet 192.168.0.1. Achten Sie also darauf, dass keine anderen Netzwerkgeräte mit dieser IP-Adresse versehen sind. (Im Abschnitt Problembehandlung finden Sie weitere Angaben zur Konfiguration der TCP/IP-Einstellungen Ihres Pcs.)

Webbrowser

1. Öffnen Sie einen Webbrowser und geben Sie in die Adressleiste **http://192.168.0.1** ein. Drücken Sie dann auf die **Eingabetaste (Enter)**.



2. Geben Sie den **User Name** (Benutzernamen) und das **Password** (Kennwort) ein und klicken Sie auf **OK**.
Standardeinstellung:
Benutzername: **admin**
Kennwort: **admin**



3. Wählen Sie eine Option um den SNMP Switch zu konfigurieren.



HyperTerminal

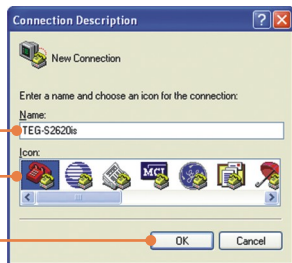
1. Verbinden Sie einen seriellen Port Ihres Windows-PCs über das RS-232-Kabel mit dem Konsolenport Ihres Umschalters.



2. Gehen Sie zu **Start > Programs (Programme) > Accessories (Zubehör) > Communications (Kommunikation) > HyperTerminal.**



3. Geben Sie einen Namen ein, wählen Sie ein Symbol aus und klicken Sie dann auf **OK**.

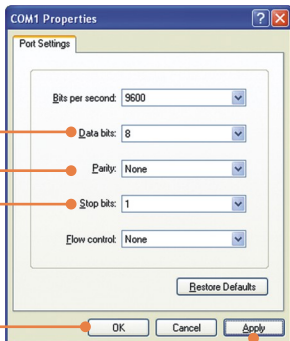


4. Wählen Sie den korrekten COM-Port (z.B. COM1, COM2) und klicken Sie dann auf **OK**.



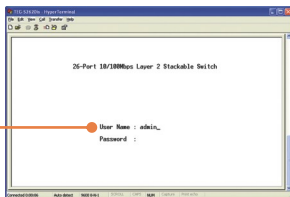
5. Konfigurieren Sie die folgenden Einstellungen, klicken Sie auf **Apply** (Übernehmen) und anschließend auf **OK**:

Bits pro Sekunde: 9600
Datenbits: 8
Parität: None (Nein)
Stoppbits: 1
Flusssteuerung: None (Nein)



6. Drücken Sie auf die **Eingabetaste**.

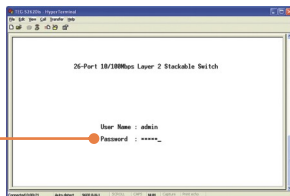
7. Geben Sie den **User Name** (Benutzernamen).
Standardeinstellung,
Benutzername: **admin**



8. Drücken Sie auf die **Eingabetaste**.

9. Geben Sie den **Password**
(Kennwort) ein und klicken Sie auf
Eingabetaste.

Standardeinstellung:
Kennwort: **admin**



Ihre Installation ist beendet!

Weitere Informationen zu den Konfigurations- und erweiterten Einstellungen des **TEG-S2620is** finden Sie im Abschnitt „Problembehandlung“ der Bedienungsanleitung auf der beiliegenden CD-ROM oder auf der Website von Trendnet unter <http://www.trendnet.com>.

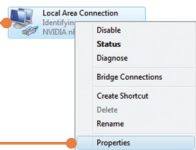
Registrieren Sie Ihr Produkt

Nehmen Sie sich bitte einen Moment Zeit und registrieren Sie Ihr Produkt online, so dass Sie unsere umfassenden Support- und Kundendienstleistungen in Anspruch nehmen können: www.trendnet.com/register
Vielen Dank für den Kauf eines TRENDnet-Produkts

Q1: How do I configure TCP/IP settings on my computer?

Windows Vista

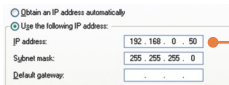
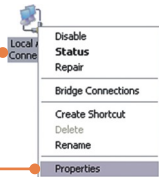
1. Go into the **Control Panel**, click **Network and Internet**, click **Network and Sharing Center**, click **Manage Network Connections** and then right-click the **Local Area Connection** icon and then click **Properties**.



2. Click **Internet Protocol Version 4(TCP/IPv4)** and then click **Properties**. Then click on **Use the following IP address**, and make sure you assign your network adapter an IP address in the subnet of 192.168.0.x.

Windows XP/2000

1. Go into the **Control Panel**, double-click the **Network Connections** icon, and then right-click the **Local Area Connection** icon and then click **Properties**.



1. Click **Internet Protocol (TCP/IP)** and then click **Properties**. Then click on **Use the following IP address**, and make sure you assign your network adapter an IP address in the subnet of 192.168.0.x.

Q2: I typed `http://192.168.0.1` in my Internet Browser's Address Bar, but an error message says "The page cannot be displayed." How can I get into the TEG-S2620i's web configuration page?

A2: First, check your hardware settings again by following the instructions in section 2. Second, make sure the Power and LNK/ACT lights are lit. Third, make sure the TCP/IP settings are configured properly (see Q1). Fourth, since the Switch's default IP address is 192.168.0.1, make sure that no other network devices are assigned an IP address of 192.168.0.1.

Q3: If my network's IP is different than the Switch's range, what should I do?

A3: You should still configure the Switch first. After all the settings are applied, go to the Switch's configuration page, click on Administrator, click IP Configuration, change the IP address of the Switch to match your network's IP and then click **Apply**.

Q4: What are the default port settings for configuring the Switch through the console port using HyperTerminal?

A3: Bits per Second: 9600; Data bits: 8; Parity: None; Stop bits: 1; Flow control: None.

Q5: I changed the IP address of the switch, but I forgot it. How do I reset my TEG-S2620is?

A5: Follow the instructions below:

- 1) Connect the RS-232 cable from a serial port on your Windows PC to the console port on your computer.
- 2) Go to Start -> Programs -> Accessories -> Communications -> HyperTerminal.
- 3) Enter a name, select an icon and then click **OK**.
- 4) Select the correct COM port (e.g. COM1, COM2) and then click **OK**.
- 5) Configure the following settings, click **Apply** and then click **OK**:
Bits per second: 9600
Data bits: 8
Parity: None
Stop bits: 1
Flow control: None
- 6) Press **Enter**.
- 7) Enter the user name. By default, the user name is **admin**.
- 8) Press **Enter**.
- 9) Enter the password. By default, password is **admin**.
- 10) Press **Enter**.
- 11) Press Tab to navigate to **System Reset Configuration** and then press Enter.
- 12) Press Tab to navigate to **Factory Default** and then press Enter.
- 13) Press **Y** to continue.

The default IP address of the switch is 192.168.0.1.

If you still encounter problems or have any questions regarding the **TEG-S2620is**, please contact TRENDnet's Technical Support Department.

Limited Warranty

TRENDnet warrants its products against defects in material and workmanship, under normal use and service, for the following lengths of time from the date of purchase.

TEG-S2620is - 5-Year Limited Warranty

If a product does not operate as warranted above during the applicable warranty period, TRENDnet shall, at its option and expense, repair the defective product or deliver to customer an equivalent product to replace the defective item. All products that are replaced will become the property of TRENDnet. Replacement products may be new or reconditioned.

TRENDnet shall not be responsible for any software, firmware, information, or memory data of customer contained in, stored on, or integrated with any products returned to TRENDnet pursuant to any warranty.

There are no user serviceable parts inside the product. Do not remove or attempt to service the product through any unauthorized service center. This warranty is voided if (i) the product has been modified or repaired by any unauthorized service center, (ii) the product was subject to accident, abuse, or improper use (iii) the product was subject to conditions more severe than those specified in the manual.

Warranty service may be obtained by contacting TRENDnet office within the applicable warranty period for a Return Material Authorization (RMA) number, accompanied by a copy of the dated proof of the purchase. Products returned to TRENDnet must be pre-authorized by TRENDnet with RMA number marked on the outside of the package, and sent prepaid, insured and packaged appropriately for safe shipment.

WARRANTIES EXCLUSIVE: IF THE TRENDNET PRODUCT DOES NOT OPERATE AS WARRANTED ABOVE, THE CUSTOMER'S SOLE REMEDY SHALL BE, AT TRENDNET'S OPTION, REPAIR OR REPLACEMENT. THE FOREGOING WARRANTIES AND REMEDIES ARE EXCLUSIVE AND ARE IN LIEU OF ALL OTHER WARRANTIES, EXPRESSED OR IMPLIED, EITHER IN FACT OR BY OPERATION OF LAW, STATUTORY OR OTHERWISE, INCLUDING WARRANTIES OF MERCHANTABILITY AND FITNESS FOR A PARTICULAR PURPOSE. TRENDNET NEITHER ASSUMES NOR AUTHORIZES ANY OTHER PERSON TO ASSUME FOR IT ANY OTHER LIABILITY IN CONNECTION WITH THE SALE, INSTALLATION, MAINTENANCE OR USE OF TRENDNET'S PRODUCTS.

TRENDNET SHALL NOT BE LIABLE UNDER THIS WARRANTY IF ITS TESTING AND EXAMINATION DISCLOSE THAT THE ALLEGED DEFECT IN THE PRODUCT DOES NOT EXIST OR WAS CAUSED BY CUSTOMER'S OR ANY THIRD PERSON'S MISUSE, NEGLIGENCE, IMPROPER INSTALLATION OR TESTING, UNAUTHORIZED ATTEMPTS TO REPAIR OR MODIFY, OR ANY OTHER CAUSE BEYOND THE RANGE OF THE INTENDED USE, OR BY ACCIDENT, FIRE, LIGHTNING, OR OTHER HAZARD.

LIMITATION OF LIABILITY: TO THE FULL EXTENT ALLOWED BY LAW TRENDNET ALSO EXCLUDES FOR ITSELF AND ITS SUPPLIERS ANY LIABILITY, WHETHER BASED IN CONTRACT OR TORT (INCLUDING NEGLIGENCE), FOR INCIDENTAL, CONSEQUENTIAL, INDIRECT, SPECIAL, OR PUNITIVE DAMAGES OF ANY KIND, OR FOR LOSS OF REVENUE OR PROFITS, LOSS OF BUSINESS, LOSS OF INFORMATION OR DATA, OR OTHER FINANCIAL LOSS ARISING OUT OF OR IN CONNECTION WITH THE SALE, INSTALLATION, MAINTENANCE, USE, PERFORMANCE, FAILURE, OR INTERRUPTION OF THE POSSIBILITY OF SUCH DAMAGES, AND LIMITS ITS LIABILITY TO REPAIR, REPLACEMENT, OR REFUND OF THE PURCHASE PRICE PAID, AT TRENDNET'S OPTION. THIS DISCLAIMER OF LIABILITY FOR DAMAGES WILL NOT BE AFFECTED IF ANY REMEDY PROVIDED HEREIN SHALL FAIL OF ITS ESSENTIAL PURPOSE.

Governing Law: This Limited Warranty shall be governed by the laws of the state of California.

Note: AC/DC Power Adapter, Cooling Fan, Cables and Power Supply carry a 1-Year Warranty

Certifications

This equipment has been tested and found to comply with FCC and CE Rules. Operation is subject to the following two conditions:

- (1) This device may not cause harmful interference.
- (2) This device must accept any interference received. Including interference that may cause undesired operation.



Waste electrical and electronic products must not be disposed of with household waste. Please recycle where facilities exist. Check with you Local Authority or Retailer for recycling advice.



NOTE: THE MANUFACTURER IS NOT RESPONSIBLE FOR ANY RADIO OR TV INTERFERENCE CAUSED BY UNAUTHORIZED MODIFICATIONS TO THIS EQUIPMENT. SUCH MODIFICATIONS COULD VOID THE USER'S AUTHORITY TO OPERATE THE EQUIPMENT.

ADVERTENCIA

En todos nuestros equipos se mencionan claramente las características del adaptador de alimentación necesario para su funcionamiento. El uso de un adaptador distinto al mencionado puede producir daños físicos y/o daños al equipo conectado. El adaptador de alimentación debe operar con voltaje y frecuencia de la energía eléctrica domiciliar existente en el país o zona de instalación.



TRENDnet[®]

Product Warranty Registration

Please take a moment to register your product online.
Go to TRENDnet's website at <http://www.trendnet.com/register>

TRENDnet[®]

20675 Manhattan Place
Torrance, CA 90501
USA