

TEG-S2600i

**Stackable SNMP Switch
Quick Installation Guide**

**Switch SNMP empilable
Guide d'installation rapide**

**Stapelbarer SNMP-Switch
Kurzanleitung zur Installation**

**Guía de instalación rápida
del conmutador SNMP apilable**

Version 04.06.2005



TRENDnet[®]
TRENDware, USA
What's Next in Networking

Table of Contents

English	1
1. Prepare for Installation	1
2. Product Detail	2
3. Hardware Installation	3
4. Configuring TCP/IP Settings	4
5. Configuring the TEG-S2600i	9
Troubleshooting	12

English QIG

1. Prepare for Installation

Thank you for purchasing the TRENDnet TEG-S2600i Stackable SNMP Switch.

This guide will help you setup your Stackable SNMP Switch. Following the installation instructions should be quick and easy. If you run into problems, please refer to the Troubleshooting section. If you need further technical support, please visit www.TRENDNET.com or call technical support by phone.

Verify Package Contents

Please make sure you have everything in the box:



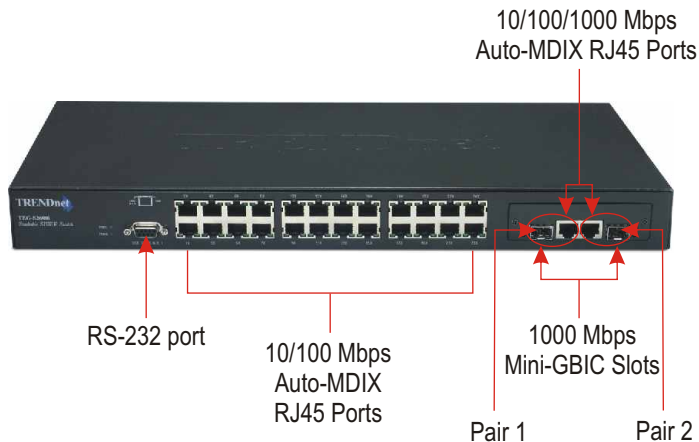
Minimum System Requirements

Before setting up the TEG-S2600i, you should have the following:

1. Workstations with network cards
2. TCP/IP protocol installed in all workstations
3. A web browser such as Internet Explorer or Netscape Navigator
4. RJ-45 Network Patch Cable to connect your workstations to the TEG-S2600i

2. Product Detail

The TEG-S2600i has four LEDs that indicate power, switch status, network activity, and network speed.



Caution: For each pair, only one RJ45 or one Mini-GBIC slot can be used at a time.

3. Hardware Installation

Please keep in mind that the site where you install the TEG-S2600i may greatly affect its performance. Refer to the **User's Guide** in the provided CD-ROM for optimal installation.

1. Make sure that the power button is in the **OFF** position.
2. Connect the AC Power cord to the back of the TEG-S2600i.
3. Press the power button to turn on the TEG-S2600i.
4. Use a standard CAT 5 cable to connect your workstations to any of the ports on the TEG-S2600i.
5. Verify that the **PWR** and **DIAG** LEDs display a solid green light. None of these LEDs should be blinking.

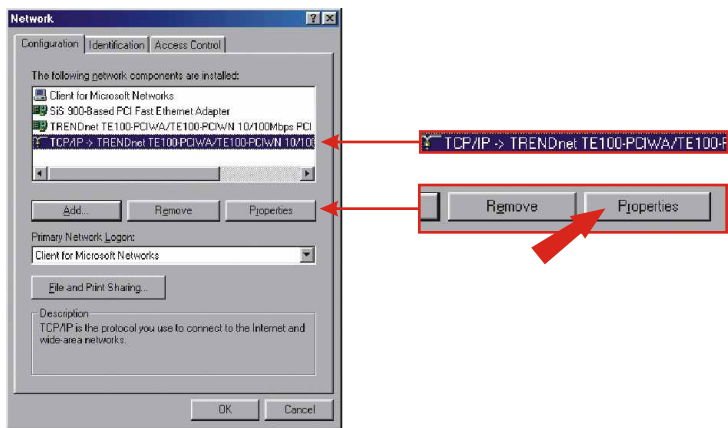


4. Configuring TCP/IP Settings

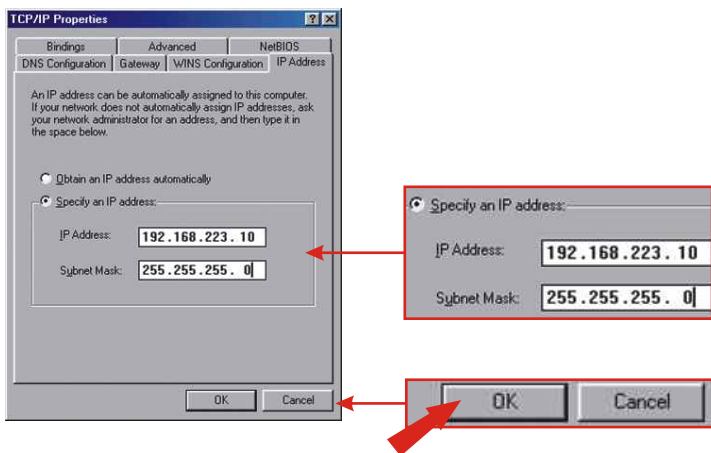
Before the TEG-S2600i can be accessed and configured, the computer's TCP/IP settings need to be changed.

Windows 95/98/98SE/ME

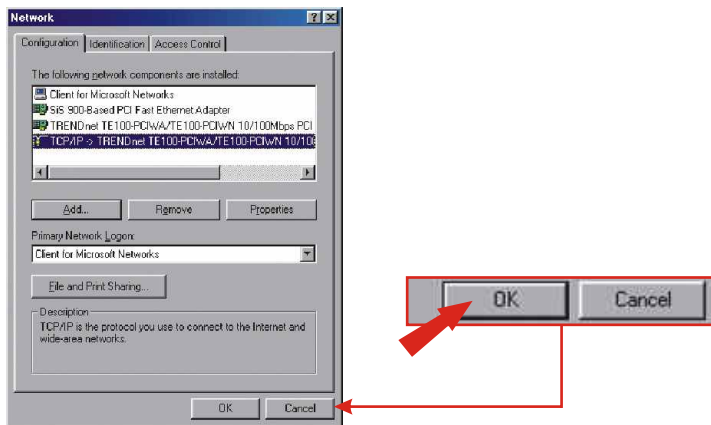
1. Find the **Start** button located on your Desktop.
2. Click **Start**, highlight Settings and then click on **Control Panel**.
3. Double-Click the **Network** Icon and the **Network Properties** box will appear.
4. Under the **Configuration** tab, locate and click **TCP/IP** with the corresponding network card. Then click on the **Properties** button and the TCP/IP Properties window will appear.



5. Under the IP Address tab, click on **Specify an IP address** and enter 192.168.223.10 for **IP address** and 255.255.255.0 for **Subnet Mask**. Click **OK**.



6. Click **OK**.



- At this point, the installation may require files from your Windows CD-ROM. If you are prompted for the location of these files, insert your Windows CD-ROM into your CD-ROM drive and select CD-ROM drive.
- After the files load, the **System Settings Change** message appears, click **Yes** to reboot your system.

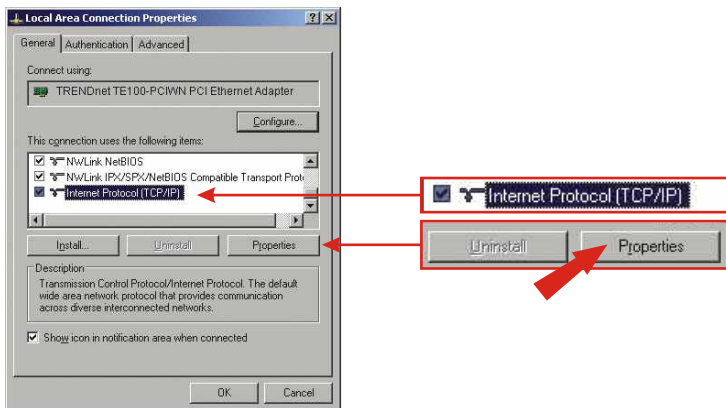


Note: If this message does not appear, restart your computer manually.

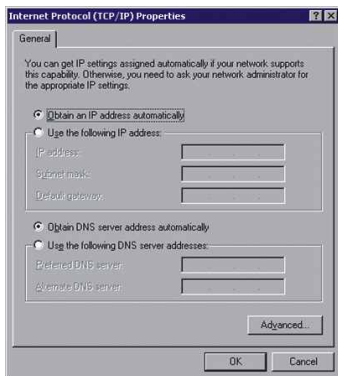
- Your computer is now ready to access and configure the TEG-S2600i.

Windows 2000/XP

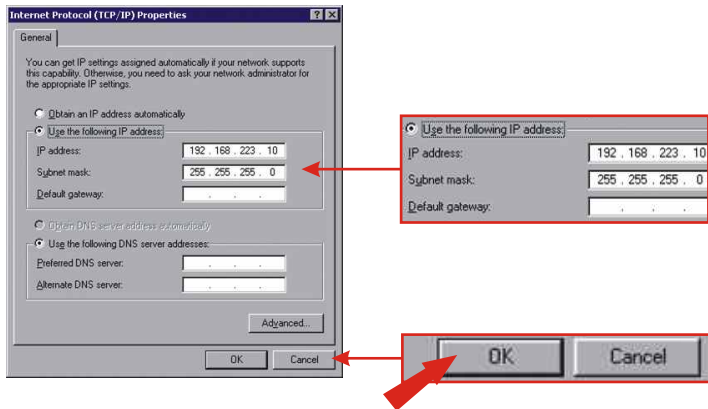
- Click **Start**, and click on **Control Panel**. For Windows 2000, click **Start**, highlight **Settings**, and click **Control Panel**.
- Double-Click the **Network Connection** icon.
- Right-Click on the **Local Area Connection** icon and then click on **Properties**. The Local Area Connection Properties box will appear



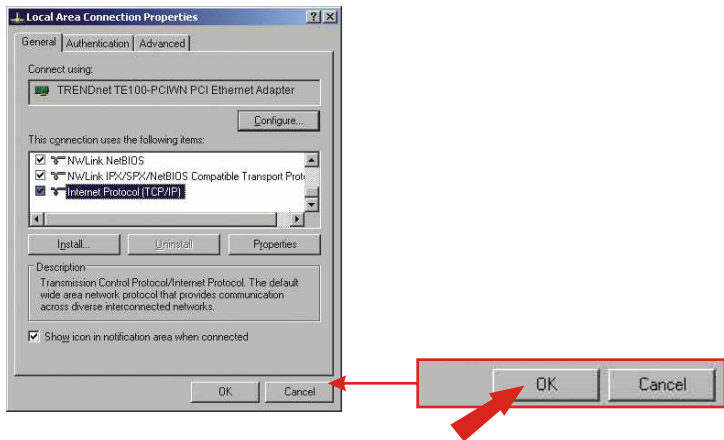
4. Under the **General** tab, locate and click **Internet Protocol TCP/IP** and then click **Properties**. The Internet Protocol (TCP/IP) **Properties** box will appear.



5. Click on **Use the following IP address**. Enter 192.168.223.10 for **IP address** and 255.255.255.0 for **Subnet**, and click **OK**.



6. Click **OK**.



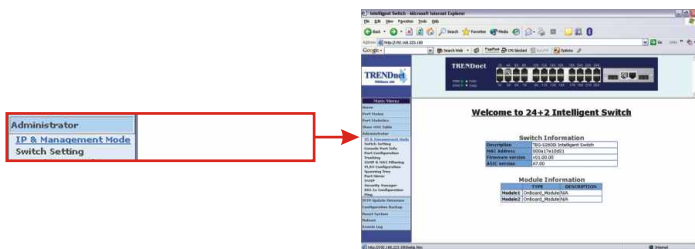
7. Your computer is ready to access and configure the TEG-S2600i.

5. Configuring the TEG-S2600i

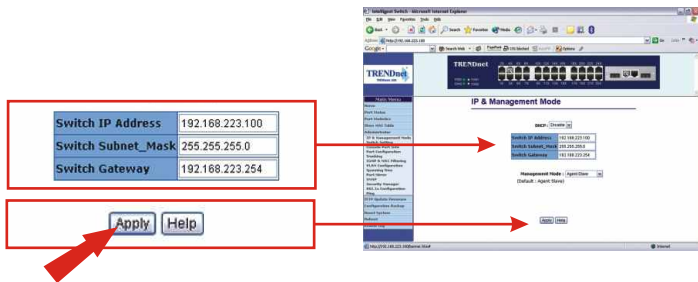
1. Open your web browser and type **http://192.168.223.100**. Type **admin** for “User name” and type **123** for “password”. Click **OK**.



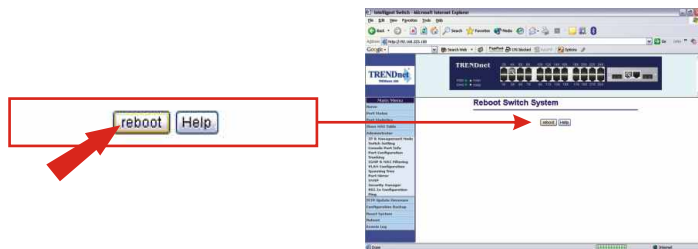
2. On the left-hand side, click **Administrator** and click **IP & Management Mode**.



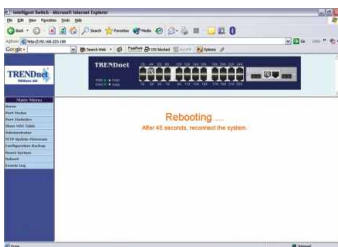
3. Change the TEG-S2600i's IP Address, Subnet Mask, and Gateway to match your current network settings. Click **Apply**.



4. Click **Reboot**.



5. Wait for 45 seconds before matching your workstation's IP Address to your current network settings.



Note: For more information on VLAN, Trunking, SNMP and other features, please consult the User's Guide in the provided CD-ROM.

Q1. How come I cannot see any light from any of my LED's?

A1. Your TEG-S2600i Stackable SNMP Switch is not getting any power. Make sure that your surge protector or your outlet is getting power and make sure that the AC Power cord is properly connected to your TEG-S2600i.

Q2. My current network card operates at 100Mbps. How can I upgrade my workstation to 1000Mbps?

A2. TRENDware provides Gigabit solutions to help you upgrade your workstation. For PCs, we recommend using the TEG-PCITXR or the TEG-PCITXM2. For notebooks, we recommend using the TEG-PCBUSR.

If you have any questions regarding the TEG-S2600i Stackable SNMP Switch please contact Trendware Technical Support Department.

Certifications

This equipment has been tested and found to comply with FCC and CE Rules. Operation is subject to the following two conditions:

- (1) This device may not cause harmful interference.
- (2) This device must accept any interference received.
Including interference that may cause undesired operation.





What's Next in Networking

Product Warranty Registration

Please take a moment to register your product online.
Go to TRENDware's website at <http://www.TRENDNET.com>

TRENDnet Technical Support

US/Canada Support Center

Contact

Telephone: 1(310) 626-6252

Fax: 1(310) 626-6267

Email: support@trendnet.com

Tech Support Hours

7:30am - 6:00pm Pacific Standard Time

Monday - Friday

European Support Center

Contact**Telephone**

Deutsch : +49 (0) 6331 / 268-460

Français : +49 (0) 6331 / 268-461

Español : +49 (0) 6331 / 268-462

English : +49 (0) 6331 / 268-463

Italiano : +49 (0) 6331 / 268-464

Dutch : +49 (0) 6331 / 268-465

Fax: +49 (0) 6331 / 268-466

Tech Support Hours

8:00am - 6:00pm Middle European Time

Monday - Friday

TRENDware International, Inc.
3135 Kashiwa Street. Torrance, CA 90505
<http://www.TRENDNET.com>