



Quick Installation Guide

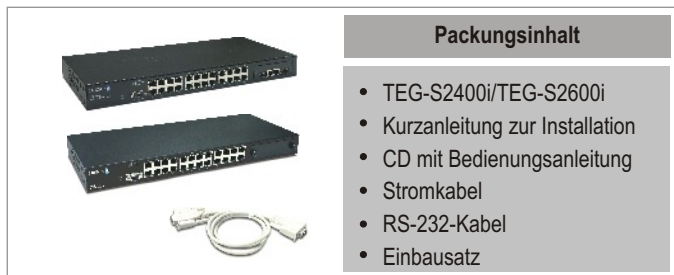


TEG-S2400i
TEG-S2600i

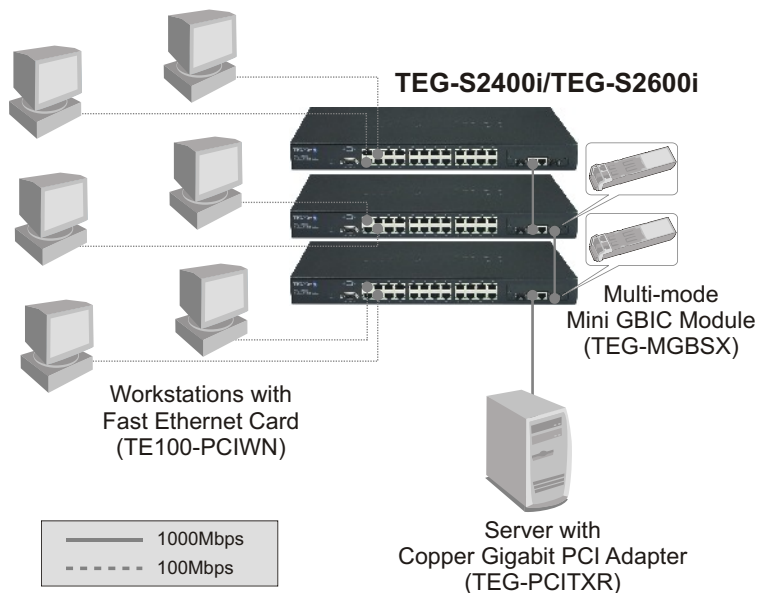
Table of Contents

Deutsch	1
1. Bevor Sie anfangen	1
2. Herstellung der Verbindung	2
3. Verwendung des Umschalters	3
Troubleshooting	5

1. Bevor Sie anfangen



Anwendung



2. Herstellung der Verbindung

1. Stecken Sie das Stromkabel in die Rückseite des TEG-S2400i/TEG-S2600i.

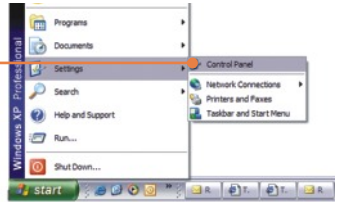


2. Schließen Sie das Netzwerkkabel an der Vorderseite des Umschalters und an Ihrem PC an.

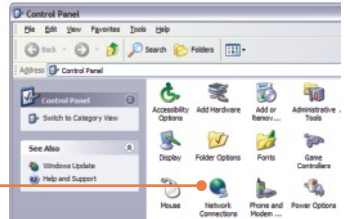
3. Kontrollieren Sie, dass die LED **PWR** kontinuierlich grün leuchtet. leuchten. Diese LEDs dürfen nicht blinken.

3. Verwendung des Umschalters

1. Gehen Sie zu **Start > Settings(Einstellungen) > Control Panel (Systemsteuerung)**.



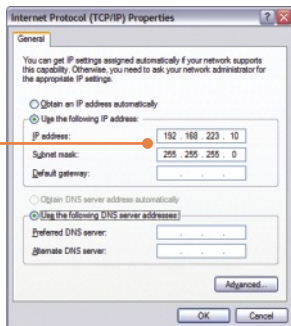
2. Doppelklicken Sie auf das Symbol **Network Connection (Netzwerkverbindung)**.



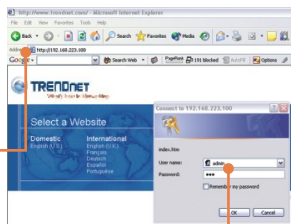
3. Klicken Sie mit der rechten Maustaste auf das Symbol **Local Area Connection (LAN-Verbindung)** und klicken Sie dann auf **Properties (Eigenschaften)**.



4. Klicken Sie auf die Registerkarte **General (Allgemein)** und dort auf **Properties (Eigenschaften)**. Markieren Sie **Internet Protocol(TCP/IP)** (Internetprotokolleigenschaften (TCP/IP)) und klicken Sie auf **Properties (Eigenschaften)**. Ändern Sie die IP-Adresse auf **192.168.223.10** und klicken Sie auf **OK**, damit die neuen Einstellungen wirksam werden.



5. Öffnen Sie Ihren Webbrowser, geben Sie **http://192.168.223.100**, ein und drücken Sie auf die **Eingabetaste (Enter)**.



6. Benutzername: **admin**
Kennwort: **123**



7. Wählen Sie auf der linken Seite die entsprechende Option zur Konfiguration des SNMP-Switch aus.

Ihre Installation ist beendet!

Hinweis: Zusätzliche Informationen zu den erweiterten Funktionen finden Sie in der Bedienungsanleitung.

Q1. How come I cannot see any light from any of my LED's?

A1. Your TEG-S2400i/TEG-S2600i is not getting any power. Make sure that your surge protector or your outlet is getting power and make sure that the AC Power cord is properly connected to your switch.

Q2. After connecting several workstations to the switch, I have all workstations communicating with the server, but I cannot access the switch's web configuration utility. What should I do?

A2. Please change your switch's IP address to match the network segment of your workstations. For configuring your switch's IP address, please consult the User's Guide.

Q3. I have connected several workstations into the switch, but one workstation does not connect to the network. The LEDs on one of the ports remain unlit, while the rest of the ports have blinking LEDs. What do I do?

A3. You either have a faulty network card or a faulty network patch cable. Make sure that your network card and network cable are functional.

If you have any questions regarding your switch please contact TRENDnet Technical Support Department.

Certifications

This equipment has been tested and found to comply with FCC and CE Rules.

Operation is subject to the following two conditions:

- (1) This device may not cause harmful interference.
- (2) This device must accept any interference received. Including interference that may cause undesired operation.



Waste electrical and electronic products must not be disposed of with household waste. Please recycle where facilities exist. Check with your Local Authority or Retailer for recycling advice.



NOTE: THE MANUFACTURER IS NOT RESPONSIBLE FOR ANY RADIO OR TV INTERFERENCE CAUSED BY UNAUTHORIZED MODIFICATIONS TO THIS EQUIPMENT. SUCH MODIFICATIONS COULD VOID THE USER'S AUTHORITY TO OPERATE THE EQUIPMENT.

Limited Warranty

TRENDnet warrants its products against defects in material and workmanship, under normal use and service, for the following lengths of time from the date of purchase.

TEG-S2400i/TEG-S2600i - 5-Year Warranty

If a product does not operate as warranted above during the applicable warranty period, TRENDnet shall, at its option and expense, repair the defective product or deliver to customer an equivalent product to replace the defective item. All products that are replaced will become the property of TRENDnet. Replacement products may be new or reconditioned.

TRENDnet shall not be responsible for any software, firmware, information, or memory data of customer contained in, stored on, or integrated with any products returned to TRENDnet pursuant to any warranty.

There are no user serviceable parts inside the product. Do not remove or attempt to service the product through any unauthorized service center. This warranty is voided if (i) the product has been modified or repaired by any unauthorized service center, (ii) the product was subject to accident, abuse, or improper use (iii) the product was subject to conditions more severe than those specified in the manual.

Warranty service may be obtained by contacting TRENDnet office within the applicable warranty period for a Return Material Authorization (RMA) number, accompanied by a copy of the dated proof of the purchase. Products returned to TRENDnet must be pre-authorized by TRENDnet with RMA number marked on the outside of the package, and sent prepaid, insured and packaged appropriately for safe shipment.

WARRANTIES EXCLUSIVE: IF THE TRENDNET PRODUCT DOES NOT OPERATE AS WARRANTED ABOVE, THE CUSTOMER'S SOLE REMEDY SHALL BE, AT TRENDNET'S OPTION, REPAIR OR REPLACEMENT. THE FOREGOING WARRANTIES AND REMEDIES ARE EXCLUSIVE AND ARE IN LIEU OF ALL OTHER WARRANTIES, EXPRESSED OR IMPLIED, EITHER IN FACT OR BY OPERATION OF LAW, STATUTORY OR OTHERWISE, INCLUDING WARRANTIES OF MERCHANTABILITY AND FITNESS FOR A PARTICULAR PURPOSE. TRENDNET NEITHER ASSUMES NOR AUTHORIZES ANY OTHER PERSON TO ASSUME FOR IT ANY OTHER LIABILITY IN CONNECTION WITH THE SALE, INSTALLATION, MAINTENANCE OR USE OF TRENDNET'S PRODUCTS.

TRENDNET SHALL NOT BE LIABLE UNDER THIS WARRANTY IF ITS TESTING AND EXAMINATION DISCLOSE THAT THE ALLEGED DEFECT IN THE PRODUCT DOES NOT EXIST OR WAS CAUSED BY CUSTOMER'S OR ANY THIRD PERSON'S MISUSE, NEGLIGENCE, IMPROPER INSTALLATION OR TESTING, UNAUTHORIZED ATTEMPTS TO REPAIR OR MODIFY, OR ANY OTHER CAUSE BEYOND THE RANGE OF THE INTENDED USE, OR BY ACCIDENT, FIRE, LIGHTNING, OR OTHER HAZARD.

LIMITATION OF LIABILITY: TO THE FULL EXTENT ALLOWED BY LAW TRENDNET ALSO EXCLUDES FOR ITSELF AND ITS SUPPLIERS ANY LIABILITY, WHETHER BASED IN CONTRACT OR TORT (INCLUDING NEGLIGENCE), FOR INCIDENTAL, CONSEQUENTIAL, INDIRECT, SPECIAL, OR PUNITIVE DAMAGES OF ANY KIND, OR FOR LOSS OF REVENUE OR PROFITS, LOSS OF BUSINESS, LOSS OF INFORMATION OR DATA, OR OTHER FINANCIAL LOSS ARISING OUT OF OR IN CONNECTION WITH THE SALE, INSTALLATION, MAINTENANCE, USE, PERFORMANCE, FAILURE, OR INTERRUPTION OF THE POSSIBILITY OF SUCH DAMAGES, AND LIMITS ITS LIABILITY TO REPAIR, REPLACEMENT, OR REFUND OF THE PURCHASE PRICE PAID, AT TRENDNET'S OPTION. THIS DISCLAIMER OF LIABILITY FOR DAMAGES WILL NOT BE AFFECTED IF ANY REMEDY PROVIDED HEREIN SHALL FAIL OF ITS ESSENTIAL PURPOSE.

Governing Law: This Limited Warranty shall be governed by the laws of the state of California.

Note: AC/DC Power Adapter, Cooling Fan, and Power Supply carry 1-Year Warranty



TRENDnet[®]

TRENDnet Technical Support

US • Canada

Toll Free Telephone: 1(866) 845-3673

24/7 Tech Support



Europe (Germany • France • Italy • Spain • Switzerland • UK)

Toll Free Telephone: +00800 60 76 76 67

English/Espanol - 24/7

Francais/Deutsch - 11 am-8pm, Monday - Friday MET

Worldwide

Telephone: +(31) (0) 20 504 05 35

English/Espanol - 24/7

Francais/Deutsch - 11 am-8pm, Monday - Friday MET

Product Warranty Registration

Please take a moment to register your product online.

Go to TRENDnet's website at <http://www.trendnet.com>

TRENDnet

3135 Kashiwa Street
Torrance, CA 90505
USA