

TEG-S224S

24-port 10/100Mbps Management Stackable Fast Ethernet Slave Switch

The TEG-S224S is a high-capacity management stackable Fast Ethernet slave switch that provides the scalability and flexibility to deploy a cost-effective network environment. The TEG-S224S has two module slots. Slot 1 is a 2-port 10/100Base-TX module (switched), which it can be replaced with either a 2-port 100Base-FX (MT-RJ) module (optional) or a 1-port 100Base-FX (SC) module (optional). Slot 2 is dedicated for one SIO port stacking module. The TEG-S224S can be controlled and managed when stacking with the TEG-S224M master switch. Using the optional switch modules, they support a maximum configuration of 94 10/100Mbps Ethernet ports and two Gigabit Ethernet ports (1 x TEG-S224M + 3 x TEG-S224S).



FEATURES

Stand-alone

- ...→ Complies with IEEE 802.3, IEEE 802.3u, IEEE 802.1p/Q, IEEE 802.3x standards
- ...→ 24 N-way auto-negotiation UTP/STP ports
- ...→ Half- and full-duplex modes
- ...→ Store-and-forward switching method
- ...→ Data filtering eliminates bad packets and runts
- ...→ 12K MAC address table per device
- ...→ Back-plane bandwidth up to 10.66Gbps
- ...→ Front panel port status LEDs
- ...→ EIA-19 rack mountable
- ...→ 5 Year Warranty

Stacked with TEG-S224M

- ...→ Supports IEEE 802.1d Spanning Tree Protocol
- ...→ Port-based VLAN
- ...→ IEEE 802.1q VLAN tagging and extended Port/MAC based VLAN
- ...→ Integrated flow control
- ...→ Port aggregation support
- ...→ IGMP snooping - Multimedia Applications support
- ...→ Broadcast Storm Filtering monitors the broadcast traffic
- ...→ Web-based network management to monitor and configure the device

BENEFITS

...→ Performance:

The full-duplex Gigabit switch brings high bandwidth with 2000Mbps speed.

...→ Expandability:

Provides up to 94-port 10/100Base-TX ports and two Gigabit ports.

...→ Reliability:

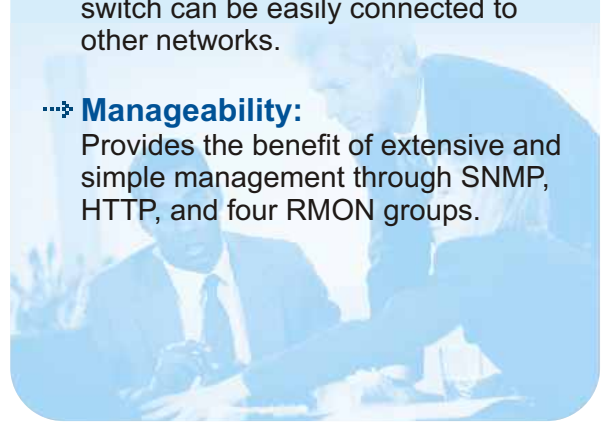
Supports IEEE 802.1p Traffic Prioritization for time-sensitive and mission-critical traffic.

...→ Flexibility:

With different optional modules, the switch can be easily connected to other networks.

...→ Manageability:

Provides the benefit of extensive and simple management through SNMP, HTTP, and four RMON groups.



TEG-S224S

24-port 10/100Mbps Management Stackable Fast Ethernet Slave Switch

SPECIFICATIONS

Standards:

- IEEE 802.3, IEEE 802.3u, IEEE 802.1p/Q, IEEE 802.3x, IEEE 802.3z

Protocol:

- CSMA/CD

Switching Method:

- Store-and-forward

Management Protocols:

- SNMP, Web-based Management, RMON, Java Management Application, Telnet, MIBs (MIB-II, Bridge, RMON, and VLAN), Local and remote out-of-band management

LEDs:

- Per Device: Power, Slot 1, Stacking Port
- Per Port: 100M, Link/Act

Cabling:

- CAT 3, 4, 5 UTP/STP RJ-45 for 10Mbps, 100 meter max.;
- CAT 5 UTP/STP RJ-45 for 100Mbps, 100 meter max.;
- multimode SC-type fiber, 2 km max.;
- multimode MT-RJ type fiber, 2 km max.

Power:

- 100-240 VAC, 50/60Hz, 46Watt max.

Dimensions:

- 441 x 367 x 44 mm / 17.3 x 8.0 x 1.7 inches

Weight:

- 5 kg / 11 lbs.

Operating Temperature:

- 0° to 50° C / 32° to 122° F

Humidity:

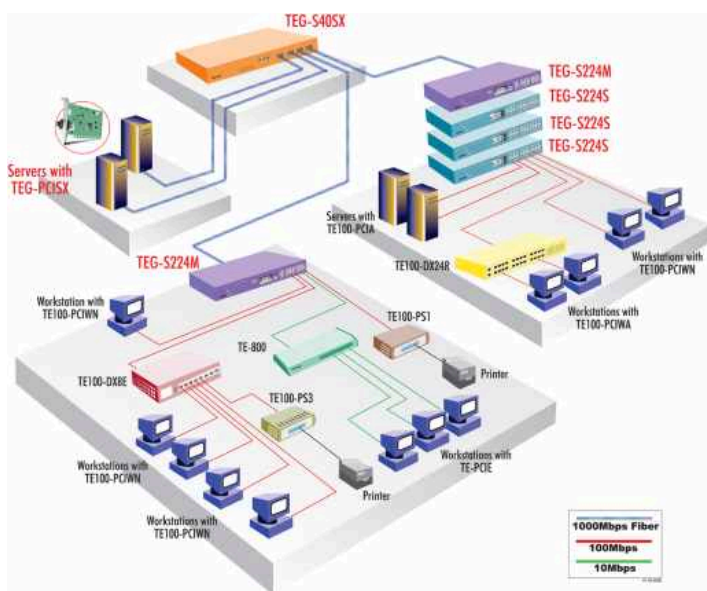
- 5 % to 95 % non-condensing

Certifications:

- FCC, CE, VCCI Class A, C-tick, BCIQ



NETWORKING SOLUTIONS



To Order Please Call:
1-888-326-6061

PRODUCT INFORMATION

- TEG-PCISX 64-bit 1000Base-SX Gigabit Ethernet Adapter with SC Connector
- TEG-S40SX 4-port 1000Base-SX Gigabit Ethernet Switch
- TEG-S224M 22-port 10/100Mbps Management Stackable Master Switch with Optional Gigabit Ethernet
- TEG-S224S 24-port 10/100Mbps Management Stackable Fast Ethernet Slave Switch
- TEG-M101F 1-port 100Base-FX (SC) Module for TEG-S224M and TEG-S224S
- TEG-M102FM 2-port 100Base-FX (MJ-RJ) Module for TEG-S224M and TEG-S224S
- TEG-M3S 3-port SIO Stacking Extension Module for TEG-S224M
- TEG-M1G 1-port 1000Base-SX (SC) Gigabit Ethernet Module for TEG-S224M
- TEG-M2G 2-port 1000Base-SX (SC) Gigabit Ethernet Module for TEG-S224M

ORDERING INFORMATION

TRENDware International, Inc.

3135 Kashiwa Street
Torrance, CA. 90505. USA

Tel: 310-891-1100

Fax: 310-891-1111

Web: www.trendware.com

Email: sales@trendware.com

