
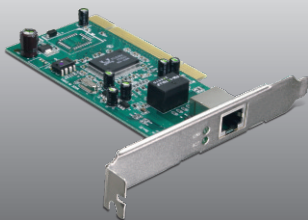


Guía de instalación rápida 

TEG-PCITXR
TEG-PCITXRL
3.02

Table of Contents

Español	1
1. Antes de iniciar	1
2. Cómo se instala	2
Troubleshooting	5



Contenidos del paquete

- TEG-PCITXR/TEG-PCITXRL
- CD-ROM de Controlador
- Guía de instalación rápida multilingüe

Requisitos del sistema

- Ranura PCI 2.1 de 32 bits
- Unidad de CD-ROM
- CPU: 1GHz o superior (Windows 7) / 800MHz o superior (Windows Vista) / 300Mhz o superior (Windows XP/2000/ME/98)
- Memoria: 1GB RAM o superior (Windows 7) / 512MB RAM o superior (Windows Vista) / 256MB RAM o superior (Windows XP/2000/ME/98)
- Windows 7(32/64-bit) / Vista(32/64-bit) / XP(32/64-bit) / 2000/ME/98
- Un cable Ethernet RJ-45

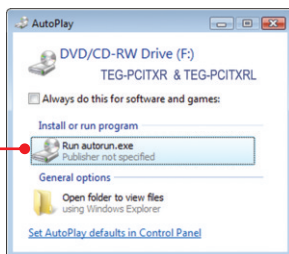
2. Cómo se instala

Nota:

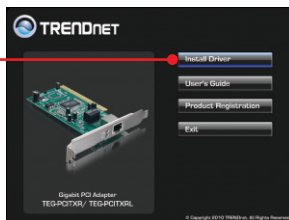
1. Para la instalación del controlador de Windows 98SE y ME, consulte la guía del usuario en el CD-ROM del controlador
2. No conecte el TEG-PCITXR/TEG-PCITXRL a su PC a menos que se le indique.

1. Introduzca el CD-ROM del controlador y de la herramienta en la unidad de CD-ROM de su PC.

2. Haga clic en **Run autorun.exe** (sólo para Windows Vista)

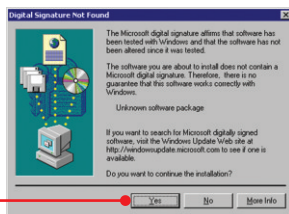


3. Haga clic en **Instalar Controlador** (Install Driver). (Windows Vista/XP/2000).



4. Siga las instrucciones del **Asistente InstallShield** (InstallShield Wizard) (Windows Vista/XP/2000).

5. Haga clic en **Yes** (sí) (sólo para Windows 2000)

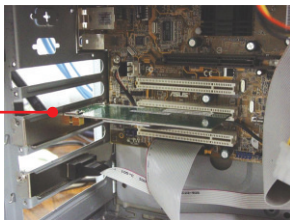


6. Haga clic en **Finish** (Finalizar).
(Windows Vista/XP/2000).

7. **Apaque** su PC y luego abra la caja de su PC.

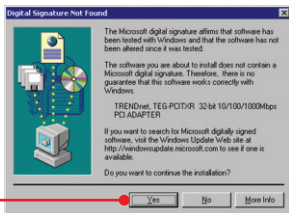


8. Introduzca la tarjeta PCI de manera firme en la ranura para tarjeta PCI disponible, después **ENCIENDA** el PC y espere hasta que aparezca el escritorio de Windows.



9. Los archivos controladores se instalarán automáticamente.

10. Haga clic en **Yes** (sí) (sólo en Windows 2000).



11. Conecte un cable de red RJ-45 del PC a un puerto Ethernet disponible en su enrutador o conmutador.



ENGLISH

FRANÇAIS

DEUTSCH

ESPAÑOL

РУССКИЙ

Su configuración inalámbrica ha finalizado

Para obtener información más detallada sobre la configuración y las opciones de configuración avanzadas de la **TEG-PCITXR/TEG-PCITXRL**, por favor consulte la sección de resolución de problemas en el CD-ROM de la Guía del Usuario, o el sitio Web de TRENDnet en <http://www.trendnet.com>.

Registre su producto

Para asegurar los más altos niveles de servicio y apoyo al cliente, registre su producto en línea en: www.trendnet.com/register Gracias por elegir TRENDnet.

1. I inserted the Driver CD-ROM into my computer's CD-ROM drive and the installation menu does not appear automatically. What should I do?

1. For Windows Vista, if the installation menu does not appear automatically, click **Start**, click the **Start Search** box, and type **D:\autorun.exe** where "**D**" in "D:\autorun.exe" is the letter assigned to your CD-ROM Drive, and then press the ENTER key on your keyboard.
2. For Windows 2000/XP, if the installation menu does not appear automatically, click **Start**, click **Run**, and type **D:\autorun** where "**D**" in "D:\autorun.exe" is the letter assigned to your CD-ROM Drive, and then press the ENTER key on your keyboard.

2. Windows doesn't recognize my new hardware. What should I do?

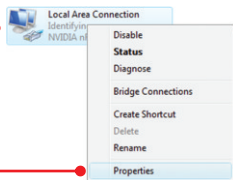
1. Verify that your computer meets the system requirements as specified in **Section 1**.
2. Access your device manager to make sure the adapter is installed properly. If you see a networking device with a yellow question mark or exclamation point, you will need to reinstall the device and/or the drivers. To access the device manager on Windows 2000/XP, right-click **My Computer**, click **Properties**, click the **Hardware** tab, and then click **Device Manager**. To access the device manager on Windows 7/Vista, right-click **Computer**, click **Properties** and then click **Device Manager**.
3. If the device manager fails to recognize the presence of a new networking adapter, verify that the network adapter is firmly seated in the PCI slot.
4. Plug the adapter into another PCI slot on your computer.

3. Windows recognizes my new hardware, but I'm unable to connect to my network. What should I do?

1. Verify that the RJ-45 Ethernet Cable is securely connected from your switch or router to your network adapter.
2. Verify that the LEDs on your network card are lit.
Verify that the TCP/IP settings are set to **Obtain an IP address automatically** (see the steps below).

Windows 7

1. Go into the **Control Panel**, click **Network and Internet**, click **Network and Sharing Center**, click **Change Adapter Settings** and then right-click the **Local Area Connection** icon and then click **Properties**.



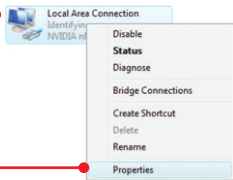
Obtain an IP address automatically
 Use the following IP address:

IP address:
 Subnet mask:
 Default gateway:

2. Click **Internet Protocol Version 4(TCP/IPv4)** and then click **Properties**. Then click on **Obtain an IP address automatically**.

Windows Vista

1. Go into the **Control Panel**, click **Network and Internet**, click **Network and Sharing Center**, click **Manage Network Connections** and then right-click the **Local Area Connection** icon and then click **Properties**.



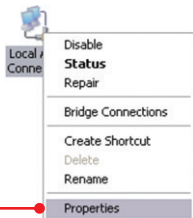
Obtain an IP address automatically
 Use the following IP address:

IP address:
 Subnet mask:
 Default gateway:

2. Click **Internet Protocol Version 4(TCP/IPv4)** and then click **Properties**. Then click on **Obtain an IP address automatically**.

Windows XP/2000/2003Server

1. Go into the **Control Panel**, double-click the **Network Connections** icon and then right-click the **Local Area Connection** icon and then click **Properties**.



Obtain an IP address automatically
 Use the following IP address:

IP address:
 Subnet mask:
 Default gateway:

2. Click **Internet Protocol (TCP/IP)** and then click **Properties**. Then click on **Obtain an IP address automatically**.

4. How do I install the drivers on Windows 98 or ME?

Please refer to the User's Guide included on the Driver CD-ROM.

5. Why am I only getting a network connection speed of 100Mbps instead of 1000Mbps?

1. Check the Ethernet Cable. Make sure you are using CAT-5e or CAT-6 Ethernet Cables. Some CAT-5 cables are not rated to run in Gigabit.
2. Make sure you are connected to a 1000Mbps switch.

If you still encounter problems or have any questions regarding the **TEG-PCITXR_TEG-PCITXRL**, please refer to the User's Guide included on the Driver CD-ROM or contact Trendnet's Technical Support Department.

Certifications

This equipment has been tested and found to comply with FCC and CE Rules.

Operation is subject to the following two conditions:

- (1) This device may not cause harmful interference.
- (2) This device must accept any interference received. Including interference that may cause undesired operation.



Waste electrical and electronic products must not be disposed of with household waste. Please recycle where facilities exist. Check with you Local Authority or Retailer for recycling advice.



NOTE: THE MANUFACTURER IS NOT RESPONSIBLE FOR ANY RADIO OR TV INTERFERENCE CAUSED BY UNAUTHORIZED MODIFICATIONS TO THIS EQUIPMENT. SUCH MODIFICATIONS COULD VOID THE USER'S AUTHORITY TO OPERATE THE EQUIPMENT.

ADVERTENCIA

En todos nuestros equipos se mencionan claramente las características del adaptador de alimentación necesario para su funcionamiento. El uso de un adaptador distinto al mencionado puede producir daños físicos y/o daños al equipo conectado. El adaptador de alimentación debe operar con voltaje y frecuencia de la energía eléctrica domiciliar existente en el país o zona de instalación.



Product Warranty Registration

Please take a moment to register your product online.
Go to TRENDnet's website at <http://www.trendnet.com/register>