

Quick Installation Guide



TEG-PCITXR

Table of Contents

Español	1
1. Antes de iniciar	1
2. Cómo se instala	2
Troubleshooting	4

1. Antes de iniciar



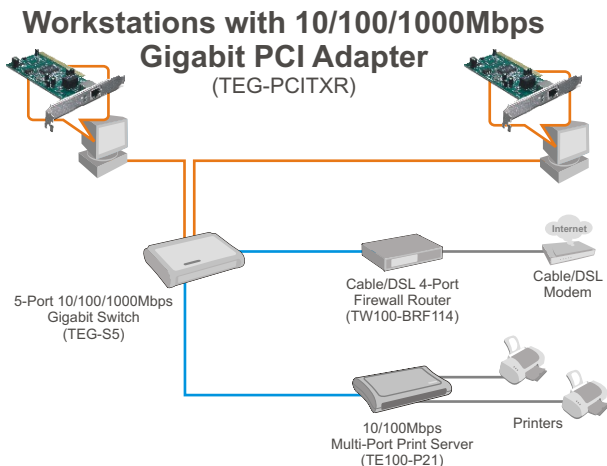
Contenidos del paquete

- TEG-PCITXR
- Guía de instalación rápida
- CD-ROM del controlador

Requisitos del sistema

- Ranura PCI 2.1 de 32 bits
- Unidad de CD-ROM
- CPU: 300Mhz o superior/800Mhz o superior (Windows Vista)
- Memoria: 256MB de RAM o más/ 512MB de RAM o más (Windows Vista)
- Windows Vista/2003 Server/XP/2000/ME/98
- Un cable Ethernet RJ-45

Aplicación

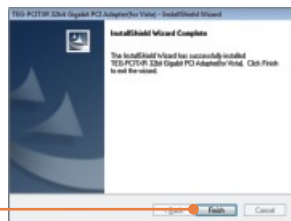


2. Cómo se instala

1. Inserte el **CD-ROM del controlador** en la unidad de CD de su ordenador, haga clic en **Instalar Controlador (Install Driver)**.



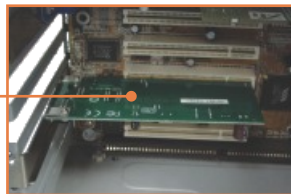
2. Siga las instrucciones del **Asistente InstallShield (InstallShield Wizard)** y a continuación haga clic en **Terminar (Finish)**.



3. **Apaque** su PC y luego abra la caja de su PC.



4. Introduzca la tarjeta PCI de manera firme en la ranura para tarjeta PCI disponible, después **ENCIENDA** el PC y espere hasta que aparezca el escritorio de Windows.



- 5.** Conecte un cable de red RJ-45 del PC a un puerto Ethernet disponible en su enrutador o conmutador.



La instalación ha sido completada

Registre su producto

Para asegurar los más altos niveles de servicio y apoyo al cliente, registre su producto en línea en: www.trendnet.com/register

Gracias por elegir TRENDnet

Q1: Windows is unable to recognize my hardware. What should I do?

A1: First, verify that your computer meets the system requirements as specified in **Section 1**. Second, go to **Start -> Control Panel -> System -> Hardware > Device Manager**. In the list of device types, double-click on **Network Adapters**. If you see the device with a yellow question mark or exclamation point next to it, double-click on it, click on **Drivers** and click **Update Drivers**. Follow the Hardware Update Wizard instructions as illustrated in **Section 2**. Third, if the device manager fails to recognize the presence of a new network adapter, verify that the network adapter is firmly seated in the PCI Slot.

Q2: Windows recognizes my new hardware, but I'm unable to connect to my network. What should I do?

A2: First, verify that the RJ-45 Ethernet Cable is securely connected from your switch or router to your network adapter. Second, verify that the LEDs on your network card are lit. Third, verify that the TCP/IP settings are set to **Obtain an IP address automatically**.

Q3: How do I install the drivers on Windows 98 or ME?

A3: Please refer to the User's Guide included on the Driver CD-ROM.

Q4: Why am I only getting a network connection speed of 100Mbps instead of 1000Mbps?

A4: First, check the Ethernet Cable. Make sure you are using CAT-5e or CAT-6 Ethernet Cables. Some CAT-5 cables are not rated to run in Gigabit. Second, check the switch to make sure it is a 1000Mbps switch.

If you still encounter problems or have any questions regarding the TEG-PCITXR, please contact Trendnet's Technical Support Department.

Certifications

This equipment has been tested and found to comply with FCC and CE Rules.

Operation is subject to the following two conditions:

- (1) This device may not cause harmful interference.
- (2) This device must accept any interference received. Including interference that may cause undesired operation.



Waste electrical and electronic products must not be disposed of with household waste. Please recycle where facilities exist. Check with you Local Authority or Retailer for recycling advice.



NOTE: THE MANUFACTURER IS NOT RESPONSIBLE FOR ANY RADIO OR TV INTERFERENCE CAUSED BY UNAUTHORIZED MODIFICATIONS TO THIS EQUIPMENT. SUCH MODIFICATIONS COULD VOID THE USER'S AUTHORITY TO OPERATE THE EQUIPMENT.

ADVERTENCIA

En todos nuestros equipos se mencionan claramente las características del adaptador de alimentación necesario para su funcionamiento. El uso de un adaptador distinto al mencionado puede producir daños físicos y/o daños al equipo conectado. El adaptador de alimentación debe operar con voltaje y frecuencia de la energía eléctrica domiciliar existente en el país o zona de instalación.



TRENDnet Technical Support

US • Canada

Toll Free Telephone: 1(866) 845-3673

24/7 Tech Support



Europe (Germany • France • Italy • Spain • Switzerland • UK)

Toll Free Telephone: +00800 60 76 76 67

English/Espanol - 24/7

Francais/Deutsch - 11 am-8pm, Monday - Friday MET

Worldwide

Telephone: +(31) (0) 20 504 05 35

English/Espanol - 24/7

Francais/Deutsch - 11 am-8pm, Monday - Friday MET

Product Warranty Registration

Please take a moment to register your product online.

Go to TRENDnet's website at <http://www.trendnet.com/register>

TRENDnet[®]
20675 Manhattan Place
Torrance, CA 90501
USA