



Quick Installation Guide



TEG-PCBUSR

Table of Contents

English	1
1. Before You Start	1
2. How to Install	2
Troubleshooting	6

1. Before You Start



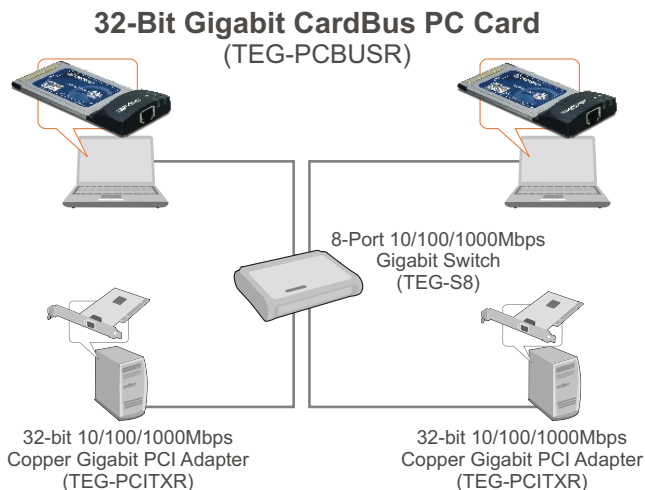
Package Contents

- TEG-PCBUSR
- Quick Installation Guide
- Driver CD-ROM

System Requirements

- PC CardBus Type II Slot
- CD-ROM Drive
- CPU: 300MHz or Above/ 800MHz or Above (Windows Vista)
- Memory: 256MB RAM or above/ 512MB RAM or above (Windows Vista)
- Windows Vista/XP/2000/ME/98SE

Application



2. How to Install

Note:

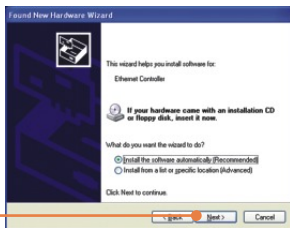
- The TEG-PCBUSR is hot-pluggable, you can connect or disconnect the TEG-PCBUSR while the computer is on.
- For Windows Vista, drivers will install automatically.
- For Windows ME and 98SE instructions, please refer to the User's Guide.

Windows XP

1. The **Found New Hardware Wizard** appears, select **No not this time**, and then click **Next**.

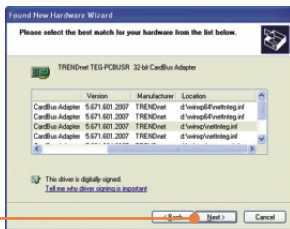


2. Insert the **Driver CD-ROM** into your computer's CD-ROM Drive.



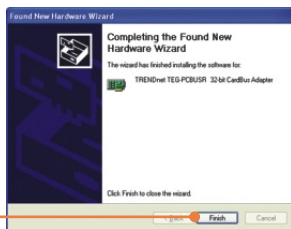
3. Select **Install the software automatically (Recommended)** and then click **Next**.

4. Select the proper driver and then click **Next**. If you are using Windows XP 64-bit, choose the driver located in d:\winxp64. If you are using Windows XP 32-bit, choose the driver located in d:\winxp.



Note: D:\ represents the drive letter that is assigned to your CD-ROM drive.

5. Click **Finish**.

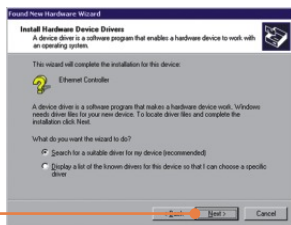


Windows 2000

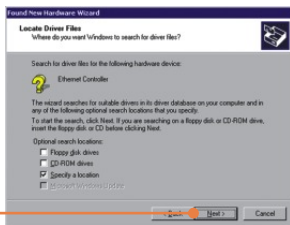
1. The **Found New Hardware Wizard** appears. Click **Next**.



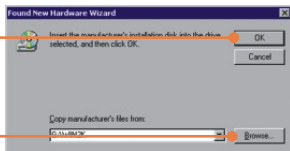
2. Select **Search for a suitable driver for my device (recommended)** and then click **Next**.



3. Select **Specify a location** and then click **Next**.

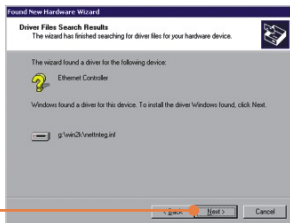


4. Type in G:\WIN2K and then click **OK**.

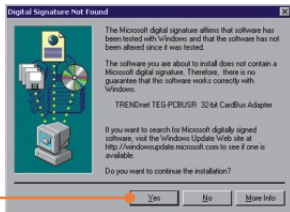


Note: G:\ represents the drive letter that is assigned to your CD-ROM drive.

5. Click **Next**.



6. Click **Yes**.



7. Click **Finish**.



Your installation is now complete.

For detailed information regarding the TEG-PCBUSR configuration and advanced settings, please refer to the TRENDnet's website at www.trendnet.com

Register Your Product

To ensure the highest level of customer service and support, please take a moment to register your product Online at: www.trendnet.com/register
Thank you for choosing TRENDnet

Q1: Windows is unable to recognize my hardware. What should I do?

A1: First, verify that your computer meets the system requirements as specified in **Section 1**. Second, go to **Start > Control Panel > Hardware > Device Manager**. In the list of device types, double-click on **Network Adapters**. If you see the device with a yellow question mark or exclamation point next to it, double-click on it, click on **Drivers** and click **Update Drivers**. Follow the Hardware Update Wizard instructions as illustrated in **Section 2**. Third, if the device manager fails to recognize the presence of a new networking adapter, verify that the network adapter is firmly seated in the PC CardBus slot. Fourth, install the adapter into another available PC CardBus slot

Q2: Windows recognizes my new hardware, but I'm unable to connect to my network. What should I do?

A2: First, verify that the RJ-45 Ethernet Cable is securely connected from your switch or router to your network adapter. Second, verify that the LEDs on your network card are lit. Third, verify that the TCP/IP settings are set to **Obtain an IP address automatically**.

Q3: When I connect the adapter to a gigabit switch, I am not getting gigabit speeds. What should I do?

A3: Make sure you are using CAT-5e or CAT-6 Ethernet Cables. Some CAT-5 cables are not rated to run in Gigabit.

If you still encounter problems or have any questions regarding the TEG-PCBUSR, please refer to the User's Guide included on the Driver CD-ROM or contact TRENDnet's Technical Support Department.

Certifications

This equipment has been tested and found to comply with FCC and CE Rules.

Operation is subject to the following two conditions:

- (1) This device may not cause harmful interference.
- (2) This device must accept any interference received. Including interference that may cause undesired operation.



Waste electrical and electronic products must not be disposed of with household waste. Please recycle where facilities exist. Check with you Local Authority or Retailer for recycling advice.



NOTE: THE MANUFACTURER IS NOT RESPONSIBLE FOR ANY RADIO OR TV INTERFERENCE CAUSED BY UNAUTHORIZED MODIFICATIONS TO THIS EQUIPMENT. SUCH MODIFICATIONS COULD VOID THE USER'S AUTHORITY TO OPERATE THE EQUIPMENT.

ADVERTENCIA

En todos nuestros equipos se mencionan claramente las características del adaptador de alimentación necesario para su funcionamiento. El uso de un adaptador distinto al mencionado puede producir daños físicos y/o daños al equipo conectado. El adaptador de alimentación debe operar con voltaje y frecuencia de la energía eléctrica domiciliar existente en el país o zona de instalación.



TRENDnet[®]

TRENDnet Technical Support

US • Canada

Toll Free Telephone: 1(866) 845-3673
24/7 Tech Support



Europe (Germany • France • Italy • Spain • Switzerland • UK)

Toll Free Telephone: +00800 60 76 76 67
English/Espanol - 24/7
Francais/Deutsch - 11am-8pm, Monday - Friday MET

Worldwide

Telephone: +[31] [0] 20 504 05 35
English/Espanol - 24/7
Francais/Deutsch - 11am-8pm, Monday - Friday MET

Product Warranty Registration

Please take a moment to register your product online.
Go to TRENDnet's website at <http://www.trendnet.com/register>

TRENDnet[®]

20675 Manhattan Place
Torrance, CA 90501
USA