



Quick Installation Guide




TEG-224WSplus

Table of Contents

| | |
|-------------------------------------|---|
| Español | 1 |
| 1. Antes de iniciar | 1 |
| 2. Instalación del Hardware | 2 |
| 3. Herramienta de gestión Web | 3 |
| Troubleshooting | 6 |

1. Antes de iniciar

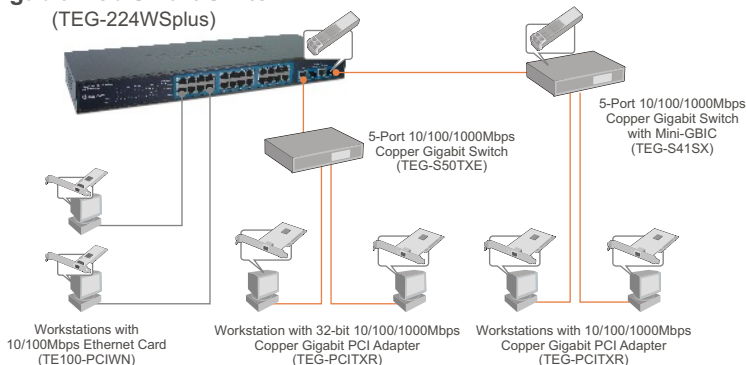
| | |
|--|---|
|  | Contenidos del paquete <ul style="list-style-type: none">• TEG-224WSplus• Guía de instalación rápida• CD-ROM de la herramienta• 2 abrazaderas para cable con tornillos• Cable de alimentación AC |
|--|---|

Requisitos del sistema

- Navegador Web: Internet Explorer (5.0 ó superior) o Netscape Navigator (6.0 ó superior)
- PC con adaptador de red instalado

Aplicación

26-Port 10/100/1000Mbps Gigabit Web Smart Switch (TEG-224WSplus)

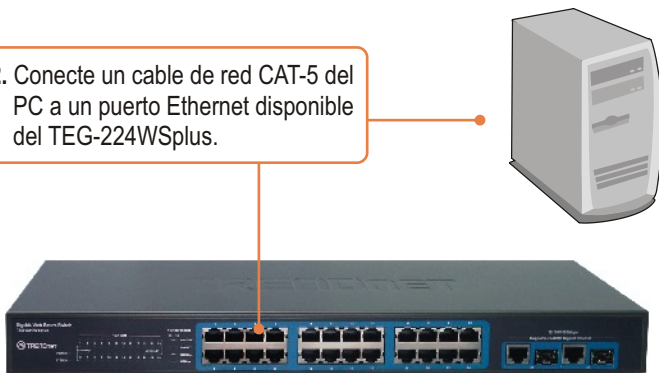


2. Instalación del Hardware

1. Conecte el **Power Cord** (Cable de alimentación) en la parte trasera del TEG-224WSplus y después a la toma corriente.



2. Conecte un cable de red CAT-5 del PC a un puerto Ethernet disponible del TEG-224WSplus.

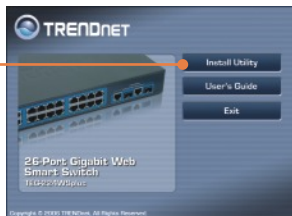


3. Herramienta de gestión Web

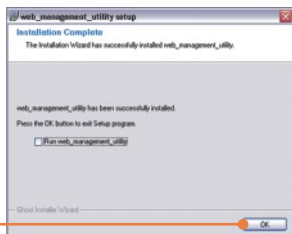
Nota: Instale y utilice la herramienta de gestión Web para descubrir todos los conmutadores de gestión Web en la red, asigne una dirección IP, cambie la contraseña y actualice a la nueva versión de firmware.

Para usuarios de Windows

1. Introduzca el **CD-ROM del controlador y de la herramienta** en la unidad de CD-ROM de su PC y luego haga clic en **Install Utility** (Instalar herramienta).



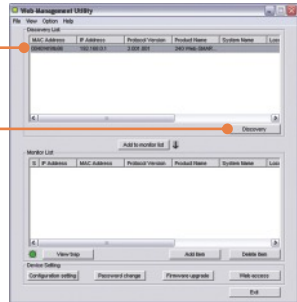
2. Siga las instrucciones del **Installation Wizard** (Asistente de instalación). Haga clic **OK**.



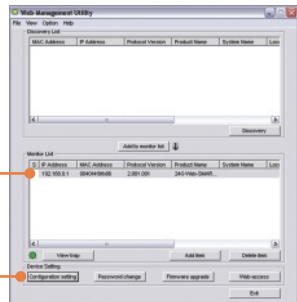
3. Haga clic en **Start** (Inicio), después en **Programs** (Programas), luego en **web_management_utility** (Herramienta de gestión Web) y después haga clic en **web_management_utility** (Herramienta de gestión Web).



4. Haga clic en **Discovery** (Descubrir) y después haga doble clic en el **Switch** (Enrutador) que aparece en la “**Discovery List**”.



5. Haga clic en el **Switch** (conmutador) que aparece en la **Monitor List** y después haga clic en **Configuration setting**.



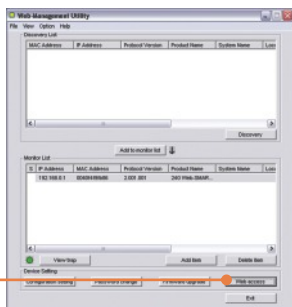
6. Establezca la configuración de la **IP Address** (Dirección IP), **Subnet mask** (Máscara de subred), **Gateway** y **Password** (Contraseña). Haga clic en **Set** (Establecer).



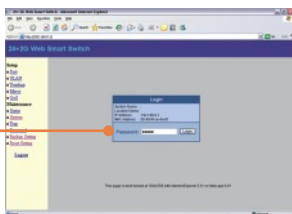
7. Haga clic en **OK**.



8. Haga clic en **Web access** (Acceso Web).



9. Escriba su **Password** (Contraseña) y después haga clic en **Login** (Iniciar).



Para obtener información más detallada sobre la configuración así como de las configuraciones avanzadas del TEG-224WSplus , por favor consulte la sección de resolución de problemas, el CD-ROM de la Guía del Usuario, o el sitio Web de Trendnet en <http://www.trendnet.com>.

Q1: After connecting the TEG-224WSplus to a power outlet, the LEDs do not turn on.

A1: Check the connection of the power cord to the TEG-224WSplus and the power outlet. Also check that the power outlet is receiving power.

Q2: After installing the Web-Management Utility, I clicked Discovery and the Utility is unable to discover the TEG-224WSplus. What should I do?

A2: Make sure that the TEG-224WSplus is powered on and that all connections are secure. Also check that your computer's IP Address is on the same network segment as the TEG-224WSplus. The default IP Address of the Switch is **192.168.0.1** and the default password is **admin**. Alternatively, you can use the web browser to configure the Switch. Type <http://192.168.0.1> into the address bar of your browser.

Q3: When I access the TEG-224WSplus using a web browser, I get a screen that tells me "only one user can login". What should I do?

A3: Another computer is configuring the TEG-224WSplus. Please wait until the user logs off. If the other user has already logged off and you still get the same screen, then disconnect the power cord from the TEG-224WSplus, wait for 5 seconds, reconnect the power cord to the TEG-224WSplus, allow 5 seconds for the Switch to power on, and then attempt to access the web configuration page to login.

Q4: I forgot the administration password. How do I reset my TEG-224WSplus?

A4: Press on the reset button using a pen or paperclip for 10 seconds. The default password is **admin**.

Q5: When I connect a computer to the Switch's gigabit port, the LINK/ACT LED turns on, but the 100Mbps LED remains off.

A5: When the 1000Mbps LED remains off, the computer's connection speed is 10Mbps or 100Mbps (if the 100Mbps LED is on). Make sure that you have a Gigabit Ethernet adapter installed. Also make sure to use a CAT-5e or CAT-6 Ethernet cable.

If you still encounter problems or have any questions regarding the TEG-224WSplus, please refer to the User's Guide included on the Utility CD-ROM or contact TRENDnet's Technical Support Department.

Certifications

This equipment has been tested and found to comply with FCC and CE Rules.

Operation is subject to the following two conditions:

- (1) This device may not cause harmful interference.
- (2) This device must accept any interference received. Including interference that may cause undesired operation.



Waste electrical and electronic products must not be disposed of with household waste. Please recycle where facilities exist. Check with you Local Authority or Retailer for recycling advice.



NOTE: THE MANUFACTURER IS NOT RESPONSIBLE FOR ANY RADIO OR TV INTERFERENCE CAUSED BY UNAUTHORIZED MODIFICATIONS TO THIS EQUIPMENT. SUCH MODIFICATIONS COULD VOID THE USER'S AUTHORITY TO OPERATE THE EQUIPMENT.



TRENDnet Technical Support

US • Canada

Toll Free Telephone: 1(866) 845-3673
24/7 Tech Support



Europe (Germany • France • Italy • Spain • Switzerland • UK)

Toll Free Telephone: +00800 60 76 76 67
English/Espanol - 24/7
Francais/Deutsch - 11am-8pm, Monday - Friday MET

Worldwide

Telephone: +(31) (0) 20 504 05 35
English/Espanol - 24/7
Francais/Deutsch - 11am-8pm, Monday - Friday MET

Product Warranty Registration

Please take a moment to register your product online.
Go to TRENDnet's website at <http://www.trendnet.com>

TRENDnet
3135 Kashiwa Street
Torrance, CA 90505
USA