



## Quick Installation Guide



**TEG-224WSplus**

# Table of Contents

Français .....	1
1. Avant de commencer .....	1
2. Installation du matériel .....	2
3. Utilitaire de gestion Internet .....	3
Troubleshooting .....	6

# 1. Avant de commencer



## Contenu de l'emballage

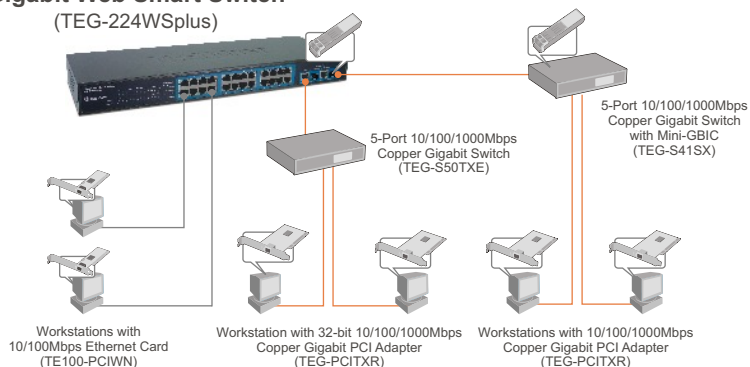
- TEG-224WSplus
- Guide d'installation rapide
- CD-ROM avec l'utilitaire
- 2 supports de fixation avec vis
- Cordon d'alimentation (courant alternatif)

## Configuration du système

- Navigateur Internet : Internet Explorer (5.0 ou supérieur), Netscape (6.0 ou supérieur)
- Ordinateur avec adaptateur réseau installé

## Application

### 26-Port 10/100/1000Mbps Gigabit Web Smart Switch (TEG-224WSplus)



## 2. Installation du matériel

1. Branchez le **Cordon d'alimentation** à l'arrière du TEG-224WSplus et à une prise de courant.



2. Branchez un câble réseau CAT-5 de l'ordinateur à un port Ethernet disponible du TEG-224WSplus.

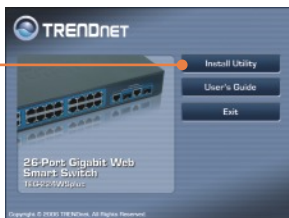


### 3. Utilitaire de gestion Internet

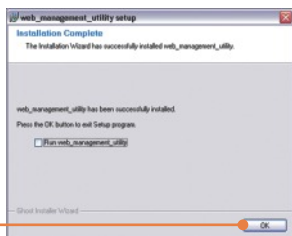
Remarque : Installez et utilisez l'utilitaire de gestion Internet pour découvrir tous les Switches de gestion Internet sur le réseau, assigner une adresse IP, changer le mot de passe et mettre le nouveau firmware à jour.

#### Utilisateurs Windows

1. Insérez le **CD-ROM avec l'utilitaire** dans le lecteur de CD-ROM de votre ordinateur et cliquez ensuite sur **Install Utility** (Installer l'utilitaire).



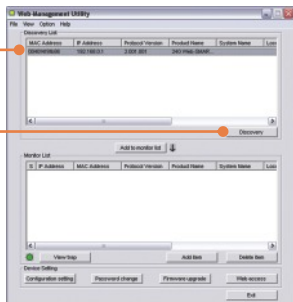
2. Suivez les instructions de l'**assistant d'installation**. Cliquez sur **OK**.



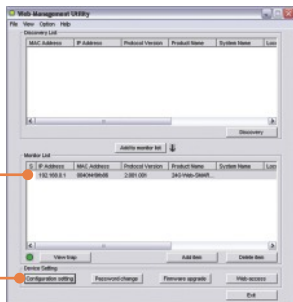
3. Cliquez sur **Start > Programs > web\_management\_utility**, et cliquez ensuite sur **web\_management\_utility**.



4. Cliquez sur **Discovery** (Découvrez), et ensuite double-cliquez sur le **Switch** qui apparaît dans la liste des découvertes (**Discovery List**).



5. Cliquez sur le **Switch** de la liste de contrôle (**Monitor List**) et ensuite sur **Configuration setting** (Paramétrage de la configuration).



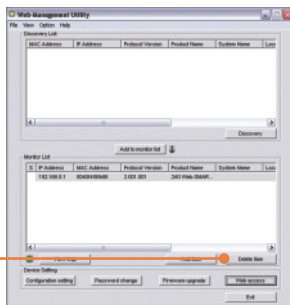
6. Configurez l'adresse IP, le masque de sous réseau, la passerelle, et le mot de passe. Cliquez sur **Set** (Enregistrer).



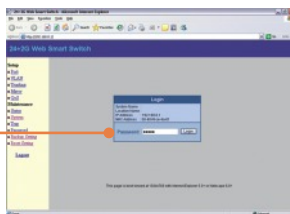
7. Cliquez sur **OK**.



8. Cliquez sur **Web access** (Accès Internet).



9. Saisissez votre **mot de passe** et cliquez ensuite sur **Login** (Enregistrement).



Si vous désirez des informations détaillées sur la configuration et les paramètres avancés du TEG-224WSplus, veuillez consulter la rubrique Dépannage, le guide de l'utilisateur sur CD-ROM ou le site Internet de Trendnet sur <http://www.trendnet.com>.

**Q1: After connecting the TEG-224WSplus to a power outlet, the LEDs do not turn on.**

**A1:** Check the connection of the power cord to the TEG-224WSplus and the power outlet. Also check that the power outlet is receiving power.

**Q2: After installing the Web-Management Utility, I clicked Discovery and the Utility is unable to discover the TEG-224WSplus. What should I do?**

**A2:** Make sure that the TEG-224WSplus is powered on and that all connections are secure. Also check that your computer's IP Address is on the same network segment as the TEG-224WSplus. The default IP Address of the Switch is **192.168.0.1** and the default password is **admin**. Alternatively, you can use the web browser to configure the Switch. Type <http://192.168.0.1> into the address bar of your browser.

**Q3: When I access the TEG-224WSplus using a web browser, I get a screen that tells me "only one user can login". What should I do?**

**A3:** Another computer is configuring the TEG-224WSplus. Please wait until the user logs off. If the other user has already logged off and you still get the same screen, then disconnect the power cord from the TEG-224WSplus, wait for 5 seconds, reconnect the power cord to the TEG-224WSplus, allow 5 seconds for the Switch to power on, and then attempt to access the web configuration page to login.

**Q4: I forgot the administration password. How do I reset my TEG-224WSplus?**

**A4:** Press on the reset button using a pen or paperclip for 10 seconds. The default password is **admin**.

**Q5: When I connect a computer to the Switch's gigabit port, the LINK/ACT LED turns on, but the 100Mbps LED remains off.**

**A5:** When the 1000Mbps LED remains off, the computer's connection speed is 10Mbps or 100Mbps (if the 100Mbps LED is on). Make sure that you have a Gigabit Ethernet adapter installed. Also make sure to use a CAT-5e or CAT-6 Ethernet cable.

If you still encounter problems or have any questions regarding the TEG-224WSplus, please refer to the User's Guide included on the Utility CD-ROM or contact TRENDnet's Technical Support Department.

## Certifications

This equipment has been tested and found to comply with FCC and CE Rules.

Operation is subject to the following two conditions:

- (1) This device may not cause harmful interference.
- (2) This device must accept any interference received. Including interference that may cause undesired operation.



Waste electrical and electronic products must not be disposed of with household waste. Please recycle where facilities exist. Check with you Local Authority or Retailer for recycling advice.



**NOTE:** THE MANUFACTURER IS NOT RESPONSIBLE FOR ANY RADIO OR TV INTERFERENCE CAUSED BY UNAUTHORIZED MODIFICATIONS TO THIS EQUIPMENT. SUCH MODIFICATIONS COULD VOID THE USER'S AUTHORITY TO OPERATE THE EQUIPMENT.





## TRENDnet Technical Support

### US • Canada

**Toll Free Telephone:** 1(866) 845-3673

24/7 Tech Support



### Europe (Germany • France • Italy • Spain • Switzerland • UK)

**Toll Free Telephone:** +00800 60 76 76 67

English/Espanol - 24/7

Francais/Deutsch - 11am-8pm, Monday - Friday MET

### Worldwide

**Telephone:** +[31] (0) 20 504 05 35

English/Espanol - 24/7

Francais/Deutsch - 11am-8pm, Monday - Friday MET

## Product Warranty Registration

Please take a moment to register your product online.

Go to TRENDnet's website at <http://www.trendnet.com>

**TRENDnet**  
3135 Kashiwa Street  
Torrance, CA 90505  
USA