





Quick Installation Guide  

**TEG-160WS**  
**TEG-240WS**  
**C2**

# Table of Contents

|                           |   |
|---------------------------|---|
| English                   | 1 |
| 1. Before You Start       | 1 |
| 2. Hardware Installation  | 2 |
| 3. Web Management Utility | 3 |
| Troubleshooting           | 6 |



## Package Contents

- TEG-160WS/TEG-240WS
- CD-ROM (Utility & User's Guide)
- Multi-Language Quick Installation Guide
- 2 Mounting Brackets with Screws
- Power Cord

## System Requirements

- Web Browser: Internet Explorer (5.0 or above), Netscape (6.0 or above)
- Computer with Network adapter installed
- Mini-GBIC module (e.g. TEG-MGBSX, TEG-MGBS10, TEG-MGBS40, TEG-MGBS80, TEG-MGBS10D35, TEG-MGBS40D35) for Mini-GBIC slots

## 2. Hardware Installation

### Note:

1. After hardware installation is complete, use the Web Browser to configure the TEG-160WS/TEG-240WS. To access the Web Browser configuration, open your web browser, and enter the default IP Address <http://192.168.0.1> and default password "admin". Make sure your computer and the TEG-160WS/TEG-240WS are configured to the same network segment.
2. The Mini-GBIC slots are shared with Port 15 and 16 (TEG-160WS) and port 23 and 24 (TEG-240WS) Gigabit Ethernet ports. When the Mini-GBIC slots are in use, port 15 and 16 (TEG-160WS) and port 23 and 24 (TEG-240WS) Gigabit Ethernet ports are disabled.

1. Connect the **Power Cord** to the rear of the TEG-160WS/TEG-240WS and then to a power outlet.



2. Connect a CAT-5e or 6 RJ-45 network cable from the computer to an available Ethernet port of the TEG-160WS/TEG-240WS.



### 3. Web Management Utility

ENGLISH

Français

DEUTSCH

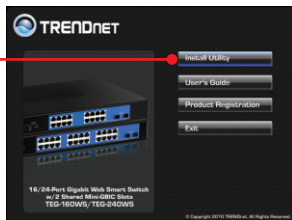
Español

Русский

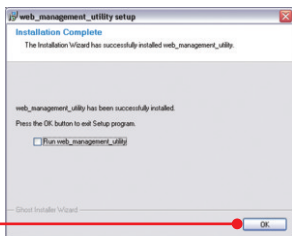
**Note:** If you would like to easily discover all the Web Management Switches on the network, assign IP Address, change the password, and upgrade to new firmware, then install the Web Management Utility. Follow the steps below.

#### For Windows User

1. Insert the **Utility & User's Guide CD-ROM** into your computer's CD-ROM Drive and then click **Install Utility**.



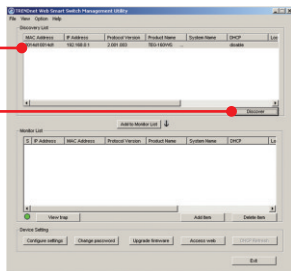
2. Follow the **Installation Wizard** instructions. Click **OK**.



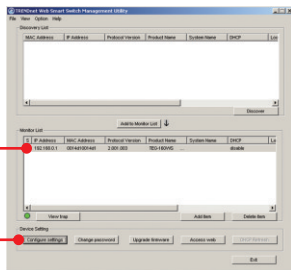
3. Click **Start** → **Programs** → **Web\_Management\_Utility**, and then click **Web\_Management\_Utility**.



4. Click **Discovery**, and then double-click the **Switch** that appears in the **Discovery List**.



5. Click the **Switch** in the **Monitor List** and then click **Configuration setting**.



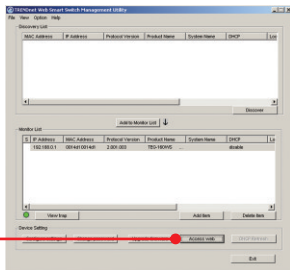
6. Configure the **IP Address**, **Subnet mask**, **Gateway**, and **Password**. Click **Set**.



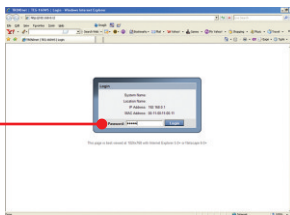
7. Click **OK**.



## 8. Click **Access Web**.



## 9. Type in your **Password** and then click **Login**. By default, the Password is **admin**.



## Your installation is now complete.

For detailed information regarding the **Web-based Smart Utility** configuration and advanced settings, please refer to the Troubleshooting section, User's Guide on the Utility CD-ROM, or TRENDnet's website at <http://www.trendnet.com>.

## Register Your Product

To ensure the highest level of customer service and support, please take a moment to register your product Online at: [www.trendnet.com/register](http://www.trendnet.com/register)

Thank you for choosing TRENDnet

### **1. After connecting the TEG-160WS/TEG-240WS to a power outlet, the LEDs do not turn on.**

Check the connection of the power cord to the TEG-160WS/TEG-240WS and the power outlet. Also check that the power outlet is receiving power.

### **2. After installing the Web-Management Utility, I clicked Discovery and the Utility is unable to discover the TEG-160WS/TEG-240WS. What should I do?**

1. Make sure that the TEG-160WS/TEG-240WS is powered on and that all connections are secure.
2. Also check that your computer's IP Address is on the same network segment as the TEG-160WS/TEG-240WS. The default IP Address of the TEG-160WS/TEG-240WS is <http://192.168.0.1> and the default password is "admin".

### **3. When I access the TEG-160WS/TEG-240WS using a web browser, I get a screen that tells me "only one user can login". What should I do?**

Another computer is configuring the TEG-160WS/TEG-240WS. Please wait until the user logs off. If the other user has already logged off and you still get the same screen, then disconnect the power cord from the TEG-160WS/TEG-240WS, wait for 5 seconds, reconnect the power cord to the TEG-160WS/TEG-240WS, allow 5 seconds for the Switch to power on, and then attempt to access the web configuration page to login.

### **4. I forgot the administration password. How do I reset my TEG-160WS/TEG-240WS?**

Press on the reset button using a pen or paperclip for 10 seconds. The default password is **admin**.

### **5. When I connect a computer to the Switch's gigabit port, the LINK/ACT LED turns on, but the 1000Mbps (TEG-160WS) or the SPEED (TEG-240WS) LED remains off.**

1. For the TEG-160WS, when the 1000Mbps LED remains off, the computer's connection speed is 10Mbps or 100Mbps (if the 100Mbps LED is on).
2. For the TEG-240WS, if the SPEED LED is off, the computer's connection speed is 10Mbps. When the SPEED LED is yellow, the computer's connection speed is 100Mbps. Make sure that you have a Gigabit Ethernet adapter installed. Also make sure to use a Cat-5e or Cat 6 Ethernet cable.

If you still encounter problems or have any questions regarding the TEG-160WS/TEG-240WS, please refer to the User's Guide included on the Utility CD-ROM or contact Trendnet's Technical Support Department.



## Certifications

This equipment has been tested and found to comply with FCC and CE Rules.

Operation is subject to the following two conditions:

- (1) This device may not cause harmful interference.
- (2) This device must accept any interference received. Including interference that may cause undesired operation.



Waste electrical and electronic products must not be disposed of with household waste. Please recycle where facilities exist. Check with you Local Authority or Retailer for recycling advice.



**NOTE:** THE MANUFACTURER IS NOT RESPONSIBLE FOR ANY RADIO OR TV INTERFERENCE CAUSED BY UNAUTHORIZED MODIFICATIONS TO THIS EQUIPMENT. SUCH MODIFICATIONS COULD VOID THE USER'S AUTHORITY TO OPERATE THE EQUIPMENT.

### ADVERTENCIA

En todos nuestros equipos se mencionan claramente las características del adaptador de alimentación necesario para su funcionamiento. El uso de un adaptador distinto al mencionado puede producir daños físicos y/o daños al equipo conectado. El adaptador de alimentación debe operar con voltaje y frecuencia de la energía eléctrica domiciliar existente en el país o zona de instalación.



## Product Warranty Registration

Please take a moment to register your product online.  
Go to TRENDnet's website at <http://www.trendnet.com/register>