



## 16-Port Gigabit Web-Based Smart Switch TEG-160WS

TRENDnet's TEG-160WS 16-Port 10/100/1000Mbps Web-Based Smart Switch is the ideal Switch for network segmenting. It has 16 10/100/1000Mbps Auto-Sensing and Auto-MDIX ports for easy installation. TEG-160WS supports web browser configuration; Network Administrator can use web browser to configure port speed, port-based VLAN and QoS, and also monitor each port's status which provides simple migration, scalability, and flexibility to handle new applications and data types. TRENDnet's TEG-160WS is powerful and easy-to-use in reducing unnecessary broadcast traffic and enhance network security.

### FEATURES

- 16 x 10/100/1000Mbps Auto-Negotiation and Auto-MDIX Gigabit Ports
- Full/Half Duplex Transfer Mode for 10/100Mbps Ports
- Full Duplex Transfer Mode for Gigabit Ports
- Full Wire-Speed Non-Blocking Reception and Transmission
- Store and Forward Switching Method
- 512K bytes RAM data buffer and 8K entries MAC address table
- Extensive diagnostic LED's on the front panel
- IEEE 802.3x flow control for full-duplex mode; Back Pressure flow control for half-duplex mode
- Proprietary Windows Based Management/Monitoring Utility (similar to SNMP Trap)
- Port-Based VLAN and Port-Based IEEE 802.1p QoS (High/Normal)
- Supports Trunking and Port Mirroring
- Port Setting function, users can set each port's availability, speed, duplex mode, and flow control
- Easy configuration via Web browser
- Standard 1U (19") Rack-Mount Design (kit included)
- 5-Year Warranty

### BENEFITS

**Easy Installation:**

Each RJ-45 port auto-senses connection speed duplex type and MDI-X media type. Connect to 10 or 100 or 1000Mbps network devices with straight through or crossover cable.

**Flexibility:**

Easy configuration and management through Web Browser.

**Performance:**

Non-blocking high performance with internal Switch Controller.

**Cost-Effectiveness:**

Provides Fast Ethernet Switch with management functions at an affordable price.

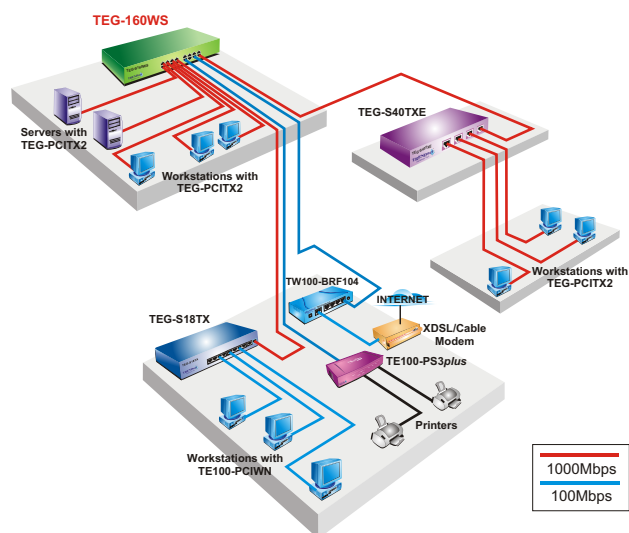
# 16-Port Gigabit Web-Based Smart Switch

## TEG-160WS

### SPECIFICATIONS

Hardware	
Standards	• IEEE 802.3 10Base-T ; IEEE 802.3u 100Base-TX, IEEE 802.3ab 1000Base-T ; IEEE 802.3x Full Duplex Flow Control
Protocol	• CSMA/CD
Topology	• Star
Connectors	• 16 10/100/1000Mbps Auto-MDIX RJ45 Ports
Cabling	• Cat. 3,4,5 UTP/STP for 10Base-T • Cat. 5 UTP/STP for 100Base-TX • Cat. 5, 5E, 6 UTP/STP for 1000Base-T
Data Transfer Rate	• 10Mbps: 10/20Mbps (Half/Full Duplex) • 100Mbps: 100/200Mbps (Half/Full Duplex) • 1000Mbps: 2000Mbps (Full Duplex)
Data RAM Buffers	• 512KBytes per device
Filtering Address Table	• 8K Entries Per Device
Diagnostic LEDs	• Per Unit: Power, System, Per Port (RJ-45): Link/Activity, 100Mbps
Power	• 100 ~ 240VAC 50/60Hz, Internal Universal Switching Power
Power Consumption	• 40 Watts (Max)
Dimensions (W x H x D)	• 440mm x 200mm x 44mm (17.3" x 7.9" x 1.73")
Weights	• 2.0 Kg (4.48 lb)
Temperature	• Operating: 0°C ~ 40°C (32°F ~ 104°F) • Storage: -10°C to 70°C (14°F to 158°F)
Humidity	• Operating: 10 % ~ 90 % (non-condensing) • Storage: 5 % ~ 90 % (non-condensing)
Certifications	• FCC, CE, VCCI

### NETWORKING SOLUTIONS



### PACKAGE CONTENTS

- TEG-160WS
- Multi-Language QIG
- CD-ROM (Utility/UG)
- Power Cord
- Rack Mount Kit

### RELATED PRODUCTS

TEG-240WS	24-port 10/100/1000Mbps Gigabit Web-Based Smart Switch
TEG-2224WS	28-port 10/100/1000Mbps Web-Based Gigabit Smart Switch
TEG-2248WS	52-Port Gigabit Web-Based Smart Switch

### ORDERING INFORMATION

#### TRENDnet

3135 Kashiwa Street, Torrance, CA 90505 USA  
 Tel: 1-310-891-1100  
 Fax: 1-310-891-1111  
 Web: [www.trendnet.com](http://www.trendnet.com)  
 Email: [sales@trendnet.com](mailto:sales@trendnet.com)

To Order Please Call:

**1-888-326-6061**

