

## **TE100-SK1** **5-Port 100Base-TX Hub Starter Kit**

The TE100-SK1 is designed as a total solution for connecting two personal computers to enable them to share files, printers, fax servers, and/or email. TRENDnet's TE100-SK1 features a 5-Port 100Base-TX hub and two 10/100Mbps Fast Ethernet cards. TRENDnet's network starter kits are specially designed for home and small office use and can support up to 5 network nodes without expansion. There is enough room on the hub to add a server, network printer, and a third personal computer.



### **FEATURES**

#### **5-port 100Base-T Hub (TE100-H5E)**

- 5-port 100Base-TX
- Uplink port for cascading to another 100Base-TX Class II hub
- Port Jabber and auto-partition protection, data collision detection and handling
- Sturdy all metal housing
- Preamble regeneration retiming incoming frames
- Status LED indicator for hub diagnostics and network utilization
- 5 Year Warranty

#### **10/100Mbps Fast Ethernet Adapter for PCI (TE100-PCIW)**

- 10/100 Mbps auto-sensing
- Supporting 32-bit PCI bus mastering
- Plug and Play
- Supports multi-tread penetration
- Compatible with all major Network Operating Systems
- 5 Year Warranty

### **BENEFITS**

- **Upgradable:**  
Add nodes as needed.
- **Expandable:**  
Add a server, internet station, network printer or a third PC without changing the hub.
- **Flexible:**  
Hub is smaller enough to be put anywhere it is needed.
- **Cost Effective:**  
Buy only the part you need.
- **Reliable:**  
5 year or lifetime warranty.



# TE100-SK1

## 5-Port 100Base-TX Hub Starter Kit

### SPECIFICATIONS

#### TE100-H5E

**DC Input:**

- 12V, 800mA

**Standards:**

- IEEE 802.3u 100Base-TX standard

**Power Consumption:**

- 10W max

**Cabling:**

- EIA Category 5 STP/UTP

**Uplink Port:**

- Shared port #1 (Slide Switch)

**Weight:**

- 600 grams (excluding power adapter)

**Dimensions:**

- 160 mm x 120 mm x 30 mm (LxWxH)

**Operating Temperature:**

- 0° - 50° C

**Certification:**

FCC, UL, C-tick, CE

#### TE100-PCIW

**Standards:**

- IEEE 802.3 10Base-T, IEEE 802.3u 100Base-TX

**Data Transfer Rate:**

- 10 or 100Mbps /20 or 200Mbps (Full Duplex)

**Topology:**

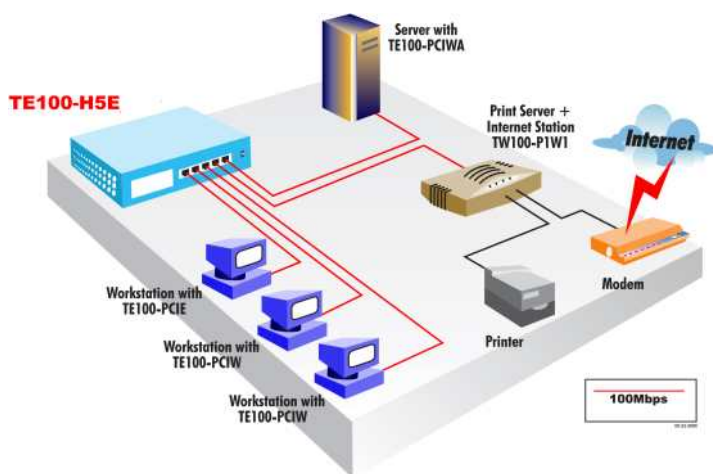
- Star

**Diagnostic LED's:**

- ACT, LINK, 100, FDX



### NETWORKING SOLUTIONS



**To Order Please Call:**  
**1-888-326-6061**

### PRODUCT INFORMATION

- **TE-SK1:** 5-Port 10Base-T Hub Ethernet Starter Kit  
(2 x TE-PCIWT, 1 x TE-500, 2 x 15' CAT 5 cables)
- **TE100-SK1:** 5-Port 100Base-T Hub Fast Ethernet Starter Kit  
(2 x TE100-PCIW, 1 x TE100-H5E, 2 x 15' CAT 5 cables)
- **TE100-SK2:** 4-Port 10/100Mbps Dual Speed Starter Kit  
(1 x TE100-PCIWplus, 1 x TE100-DX4PCI, 1 x 15' CAT 5 cables)
- **TE100-SK3:** 5-Port 10/100Mbps Switch Fast Ethernet Network Kit  
(2 x TE100-PCIWN, 1 x TE100-S55E, 2 x 20' CAT 5 cables)
- **TE100-SK3plus:** 5-Port 10/100Mbps Switch Fast Ethernet Network Kit  
(2 x TE100-PCIWN, 1 x TE100-S55Eplus, 2 x 20' CAT 5 cables)
- **TE100-SK4:** 10/100Mbps Switched Fast Ethernet Network Kit  
(2 x TE100-PCIWN, 1 x TE100-S5P, 2 x 15' CAT 5 cable)

### ORDERING INFORMATION

**TRENDware International, Inc.**

3135 Kashiwa Street  
Torrance, CA. 90505. USA  
Tel: 310-891-1100  
Fax: 310-891-1111  
Web: [www.trendware.com](http://www.trendware.com)  
Email: [sales@trendware.com](mailto:sales@trendware.com)

