



TE100-S55Eplus **5-Port 10/100Mbps N-Way Mini Ethernet Switch**

TRENDnet's TE100-S55Eplus, 5-port, palm-sized 10/100Mbps N-way Ethernet Switch, presents the perfect choice for small workgroups for any desktop space. It allows users to simply plug any port to either a 10Mbps or 100Mbps network to multiply bandwidth, boost response time and satisfy heavy load demands. The N-way ports automatically negotiate between 10Base-T and 100Base-TX network speeds, as well as between half- and full-duplex modes. The TE100-S55Eplus provides cost-effective, and high-performance solutions.



FEATURES

- Compliant with IEEE 802.3 and IEEE 802.3u standards
- 5-port N-way 10/100M auto-detection
- Half- or full-duplex for each port
- Operates at maximum packet filtering and forwarding rate
- Store-and-forward switching method
- Uplink (MDI-II) connector (shared with port 1) for easy expansion
- 128KB buffer memory
- Address table up to 1K MAC address
- Compact design with external power adapter
- Comprehensive LED indications for port status
- 5 Year Warranty

BENEFITS

- **Easy Installation:**
Designed to link 10Mbps and 100Mbps with 5 ports for an easy connection.
- **Flexibility:**
NWay ports auto-negotiate between 10Base-T and 100Base-TX, as well as between half- and full-duplex modes. Auto-MDI for each port; connects to regular RJ45 port or Uplink port with either regular "straight through" or crossover RJ45 cable.
- **Expandability:**
All ports support 200Mbps (in full-duplex mode), expanding from any port and for any number of Switches.
- **Easy Migration:**
Easy upgrade to Fast Ethernet without reconfiguration.
- **Dependability:**
Parallel store-and-forward architecture allows direct transfer.

TE100-S55Eplus

5-Port 10/100Mbps N-Way Mini Ethernet Switch

SPECIFICATIONS

Standards:

- IEEE 802.3 for 10Base-T Ethernet,
- IEEE 802.3u for 100Base-TX Fast Ethernet.
- ANSI/IEEE 802.3u N-way auto-negotiation

Data Transfer Rate:

- 10/100Mbps (20/200Mbps in full-duplex mode)

Protocol:

- CSMA/CD

Connectors:

- 5 UTP/STP RJ-45

Network Media:

- UTP CAT 3, 4, 5 (100m) for 10Base-T
- EIA/TIA-568 100-ohm STP (100m) for 10Base-T/100Base-TX
- UTP CAT 5 (100m) for 100Base-TX

Packet Forwarding Rate:

- 10Base-T: 14,880 pps per port (half-duplex)
- 100Base-TX: 148,800 pps per port (half-duplex)

Topology:

- Star

Diagnostic LEDs:

- Power, Link/Activity, Collision/Full-duplex, and 100Mbps

Power:

- External power supply (Max. power consumption: 7.5 Watts)

Dimensions:

- 116 x 70 x 25 mm (4.57 x 2.8 x 0.98 inches)

Weight:

- 255 g (9 oz.)

Temperature:

- Operating Temp: 0° to 50° C (32° F to 122° F)
- Storage Temp: -10° to 70° C (14° F to 158° F)

Humidity:

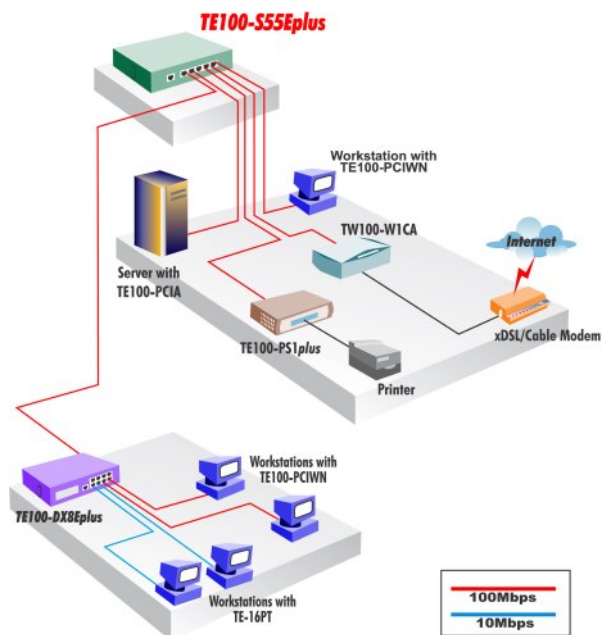
- Operating Humidity: 10 % to 90 % RH
- Storage Humidity: 5 % to 90 % RH

Certifications:

- FCC, UL, CE, VCCI



NETWORKING SOLUTIONS



To Order Please Call:
1-888-326-6061

PRODUCT INFORMATION

- **TE100-S55E:** 5-port 10/100Mbps N-way Ethernet Mini Switch
- **TE100-S55Eplus:** 5-port 10/100Mbps N-Way Ethernet Mini Switch
- **TE100-S88E:** 8-port 10/100Mbps N-way Ethernet Mini Switch
- **TE100-S88:** 8-port 10/100Mbps N-way Ethernet Switch
- **TE100-S1616:** 16-port 10/100Mbps N-way Ethernet Switch
- **TE100-S2424:** 24-port 10/100Mbps N-way Ethernet Switch

ORDERING INFORMATION

TRENDware International, Inc.
3135 Kashiwa Street
Torrance, CA. 90505. USA
Tel: 310-891-1100
Fax: 310-891-1111
Web: www.TRENDNET.com
Email: sales@trendware.com

TRENDnet
TRENDware, USA