



## Quick Installation Guide Ghid de instalare in limba romana



**TE100-S50g**  
**TE100-S80g**

H/W: V1

# Table of Contents

English .....	1
1. Before You Start .....	1
2. Hardware Installation .....	3
3. LEDs .....	4
Româna .....	5
1. Înainte de a începe .....	5
2. Instalarea hardware .....	7
3. LED-uri .....	8
Specificații tehnice .....	9
Troubleshooting .....	11
Remedierea erorilor de funcționare .....	12

# 1. Before You Start



## Package Contents

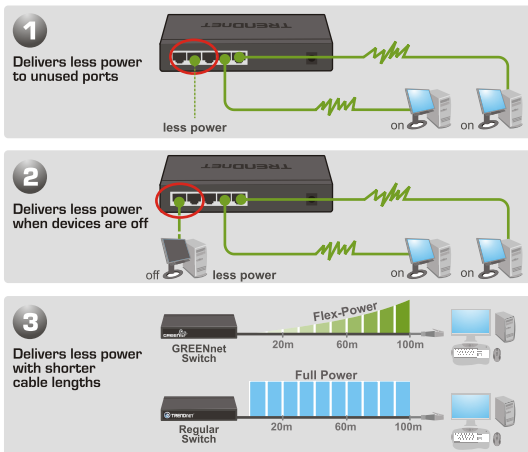
- TE100-S50g/TE100-S80g
- Multi-Language Quick Installation Guide
- AC Power Adapter (7.5V DC, 1A)
- Rubber Feet

## Installation Requirements

- A computer with a network adapter installed
- CAT-5, CAT-5e or CAT-6 Network Cable
- The surface must support at least 1.5 Kg for the Switch
- The power outlet should be within 1.82 meters (6 feet) of the Switch
- Visually inspect the DC power jack to make sure that it is securely connected to the power adapter
- Make sure that there is proper heat dissipation from and adequate ventilation around the Switch
- Do not place heavy objects on the Switch

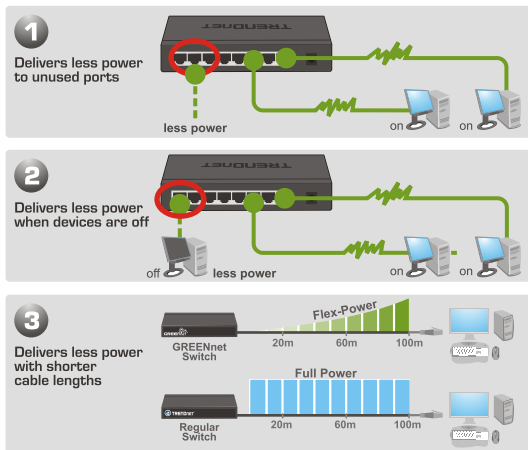
# Application

## TE100-S50g



\*Max power savings compared with standard TRENDnet switches.

## TE100-S80g



\*Max power savings compared with standard TRENDnet switches.

## 2. Hardware Installation

1. Connect the **AC Power Adapter** to the TE100-S50g/TE100-S80g and then to a power outlet.



2. Connect a CAT-5, CAT-5e or CAT-6 RJ-45 network cable from the computer to an available Ethernet port of the TE100-S50g/TE100-S80g.



## 3. LEDs

### Power

Green: Power is on.

Not Illuminated: Power is off.

### Link/ACT

Green(Solid): Link to another device.

Green(Blinking): Activity is occurring from the link.

Not Illuminated: Nothing is detected on the port.



### 100Mbps

Green: Connection for the port is 100 (Full/Half)

Not Illuminated: Connection for the port is 10(Full/Half) or nothing is detected on the port.

**Your configuration is now complete.**

### Register Your Product

To ensure the highest level of customer service and support, please take a moment to register your product Online at: [www.trendnet.com/register](http://www.trendnet.com/register)

Thank you for choosing TRENDnet

# 1. Înainte de a începe



## Conținutul pachetului

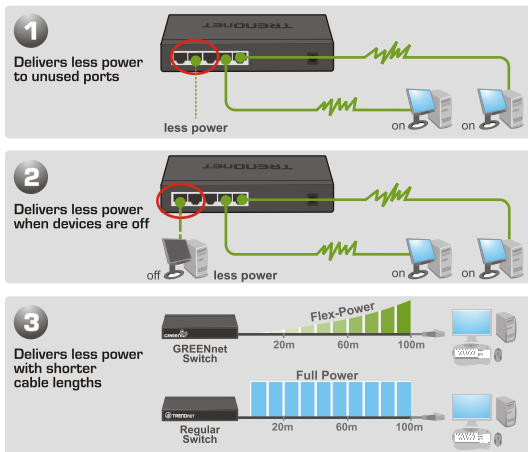
- TE100-S50g/TE100-S80g
- Ghid de instalare rapidă
- Adaptor AC/DC (7.5V DC, 1A)
- Suporti de cauciuc

## Cerințe de sistem

- Computer cu placă de rețea instalată
- Cablu de rețea Cat-5, Cat-5e sau Cat-6
- Locul de amplasare trebuie să suporte cel puțin 1.5 Kg pentru Switch
- Priza electrică va fi situată la aproximativ 1.82 metri de Switch
- Verificați jack-ul DC pentru a vă asigura că este conectat în siguranță la adaptorul de tensiune .
- Asigurați-vă că există o ventilație adecvată în jurul Switch-ului
- Nu așezați obiecte grele deasupra Switch-ului.

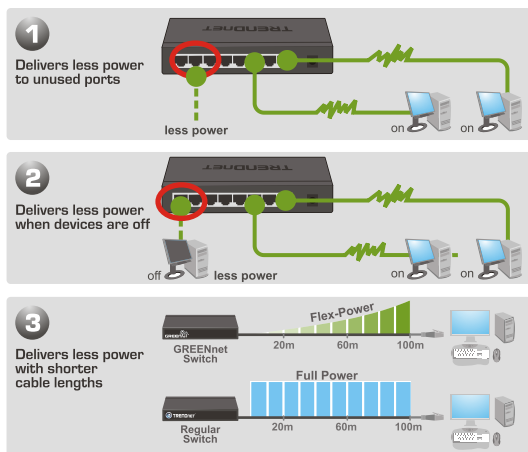
## Aplicatie

### TE100-S50g



\*Max power savings compared with standard TRENDnet switches.

### TE100-S80g



\*Max power savings compared with standard TRENDnet switches.



## 2. Instalarea Hardware

1. Conectați adaptorul **AC/DC** la TE100-S50g/TE100-S80g și la priza electrică.



2. Conectați un cablu de rețea CAT-5, CAT-5e sau CAT-6 RJ-45 de la computer la un port liber Ethernet de la TE100-S50g/TE100-S80g.



### 3. LED-uri

#### Power

Verde: pornit.  
Stins: oprit.

#### Link/ACT

Verde(continuu): conexiune stabilă cu un alt dispozitiv.  
Verde(intermitent): port activ.  
Stins: nu este detectată nici o activitate la port.



#### 100Mbps

Verde: Viteza conexiunii portului este de 100Mbps ( Full/Half)  
Stins: Viteza conexiunea portului este 10Mbps (Full/Half) sau nu exista conexiune .

### Configurarea este acum completă!

#### Inregistrați-vă produsul

Pentru a vă asigura că veți primi cel mai ridicat nivel de suport, vă rugăm să vă înregistrați electronic produsul la

[www.trendnet.com/register](http://www.trendnet.com/register)

Vă mulțumim pentru că ați ales TRENDnet

Hardware	
<b>Standarde</b>	IEEE 802.3 10BASE-T IEEE 802.3u 100BASE-TX IEEE 802.3x Flow Control
<b>Cablu rețea</b>	Ethernet: 2-Pair UTP/STP CAT-3, -4, -5 Fast Ethernet: 2-Pair UTP/STP CAT-5, -5e, -6
<b>Rată transfer date</b>	Ethernet: 10Mbps (half-duplex), 20Mbps (full-duplex) Fast Ethernet: 100Mbps (half-duplex), 200Mbps (full-duplex)
<b>Protocol/Topologie</b>	CSMA/CD / Star
<b>Interfață</b>	TE100-S50g: 5 x 10/100/1000 Auto-MDIX RJ-45 ports TE100-S80g: 8 x 10/100/1000 Auto-MDIX RJ-45 ports
<b>Data RAM Buffer</b>	TE100-S50g: 384Kbytes per device TE100-S80g: 768Kbytes per device
<b>Packet Filtering/ Forwarding Rate</b>	10Mbps Ethernet: 14,880pps (packet per second) 100Mbps Fast Ethernet: 148,800pps
<b>MAC Address Learning</b>	Automatic Update
<b>Filtering Table</b>	1K entries per device
<b>Switch Fabric</b>	TE100-S50g: 1Gbps Forwarding Capacity TE100-S80g: 1.6Gbps Forwarding Capacity
<b>Consum energie</b>	TE100-S50g: 2.1W (max) TE100-S80g: 2.5W (max)
<b>Indicatoare LEDs</b>	Power, Link/ACT, 100Mbps
<b>Adaptor rețea electrică</b>	7.5V DC, 1A External Power Adapter
<b>Dimensiuni</b>	TE100-S50g: 116 x 25 x 70 mm (4.57 x .98 x 2.76 in.) TE100-S80g: 136 x 25 x 70 mm (5.35 x .98 x 2.76 in.)
<b>Greutate</b>	TE100-S50g: 225g TE100-S80g: 265g

## Hardware

<b>Temperatură</b>	Operating: 0° ~ 40° C (32° ~ 104° F) Storage: -10° ~ 70° C (14° ~ 158° F)
<b>Umiditate</b>	Operating: 10% ~ 90% Storage: 5% ~ 90%
<b>Certificări</b>	CE, FCC

**Q1: After connecting the Switch to a power outlet, the LEDs do not turn on.**

**A1:** Check the connection of the external power adapter to the Te100-S50g/TE100-S80g and the power outlet. Also check that the power outlet is receiving power.

**Q2: When I connect a computer to the Switch's port, the LINK/ACT LED turns on, but the 100Mbps LED remains off.**

**A2:** When the 100Mbps LED is off, the computer's connection speed is 10Mbps.

**Q3: After I connect my PCs to the Switch, I am unable to share files.**

**A3:** First, check the LEDs on the Switch. Make sure the **Link/ACT LED** is on. Second, check the network cable. The minimum length of the cable is 1.5 meters and the maximum length of the cable is 100 meters. Third, disable any software firewall program. Fourth, verify that you have file sharing enabled. Please contact your Operating System support for more information.

**Q4: After I connect my PCs to the Switch, I can only get onto the Internet from one computer.**

**A4:** The Switch was not designed to share Internet between multiple computers. You need to get an Internet router such as the TW100-S4W1CA.

**Q5: Where is the uplink port located on the Switch?**

**A5:** Since all the ports on the Switch are Auto-MDIX, any of the ports can be used as an uplink port.

If you still encounter problems or have any questions regarding the **TE100-S50g/TE100-S80g** please contact Trendnet's Technical Support Department.

**Î1: După conectarea Switch-ului la o priză electrică, LED-urile indicatoare nu se aprind.**

**R1:** Verificați conexiunea între adaptorul extern DC al TE100-S50g/TE100-S80g și priza electrică. Deasemenea verificați dacă la priza electrică există tensiune.

**Î2: Cand am conectat computerul la portul switch-ului , led-ul LINK/ACT arata ca este pornit dar led-ul 100Mbps ramane oprit .**

**R2:** Cand led-ul 100Mbps. ramane oprit, conectarea computerului se face la viteza de 10Mbps.

**Î3: Adupă conectarea Switch-ului la PC, transferul de fișiere nu are loc.**

**R3:** In primul rând, verificați dacă LED-urile Switch-ului sunt aprinse. Asigurați-vă că LED-ul Link/ACT este aprins. In al doilea rand, verificați cablul de rețea. Lungimea minimă a cablului trebuie să fie 1.5 metrii și cea maximă 100 metrii. In al treilea rand, dezactivați orice software firewall. In al patrulea rand, verificați dacă aveți activat protocolul de transfer fișiere. Vă rugăm contactati suportul tehnic al producatorului sistemului de operare al PC-ului dvs. pentru mai multe informatii.

**Î4: După conectarea PC-ului la Switch, vă puteți conecta la internet doar de pe un singur computer.**

**R4:** Switch-ul nu a fost proiectat pentru a permite distribuirea conexiunii la internet intre multiple calculatoare. Aveți nevoie să vă procurați un Internet router cum ar fi TW100-S4W1CA.

**Î5: Unde este localizat portul uplink al Switch-ului?**

**R5:** Odată ce toate porturile Switch-ului sunt Auto-MDIX, orice port poate fi utilizat ca și port uplink.

Dacă mai întâmpinați probleme sau aveți întrebări privind **TE100-S50g/TE100-S80g** rugăm contactați Serviciul de Asistență Tehnică de la Trendnet.

## Limited Warranty

TRENDnet warrants its products against defects in material and workmanship, under normal use and service, for the following lengths of time from the date of purchase.

<b>TE100-S50g/TE100-S80g</b>	<b>5-Year Limited Warranty</b>
------------------------------	--------------------------------

If a product does not operate as warranted above during the applicable warranty period, TRENDnet shall, at its option and expense, repair the defective product or deliver to customer an equivalent product to replace the defective item. All products that are replaced will become the property of TRENDnet. Replacement products may be new or reconditioned.

TRENDnet shall not be responsible for any software, firmware, information, or memory data of customer contained in, stored on, or integrated with any products returned to TRENDnet pursuant to any warranty.

There are no user serviceable parts inside the product. Do not remove or attempt to service the product through any unauthorized service center. This warranty is voided if (i) the product has been modified or repaired by any unauthorized service center, (ii) the product was subject to accident, abuse, or improper use (iii) the product was subject to conditions more severe than those specified in the manual.

Warranty service may be obtained by contacting TRENDnet office within the applicable warranty period for a Return Material Authorization (RMA) number, accompanied by a copy of the dated proof of the purchase. Products returned to TRENDnet must be pre-authorized by TRENDnet with RMA number marked on the outside of the package, and sent prepaid, insured and packaged appropriately for safe shipment.

WARRANTIES EXCLUSIVE: IF THE TRENDNET PRODUCT DOES NOT OPERATE AS WARRANTED ABOVE, THE CUSTOMER'S SOLE REMEDY SHALL BE, AT TRENDNET'S OPTION, REPAIR OR REPLACEMENT. THE FOREGOING WARRANTIES AND REMEDIES ARE EXCLUSIVE AND ARE IN LIEU OF ALL OTHER WARRANTIES, EXPRESSED OR IMPLIED, EITHER IN FACT OR BY OPERATION OF LAW, STATUTORY OR OTHERWISE, INCLUDING WARRANTIES OF MERCHANTABILITY AND FITNESS FOR A PARTICULAR PURPOSE. TRENDNET NEITHER ASSUMES NOR AUTHORIZES ANY OTHER PERSON TO ASSUME FOR IT ANY OTHER LIABILITY IN CONNECTION WITH THE SALE, INSTALLATION, MAINTENANCE OR USE OF TRENDNET'S PRODUCTS.

TRENDNET SHALL NOT BE LIABLE UNDER THIS WARRANTY IF ITS TESTING AND EXAMINATION DISCLOSE THAT THE ALLEGED DEFECT IN THE PRODUCT DOES NOT EXIST OR WAS CAUSED BY CUSTOMER'S OR ANY THIRD PERSON'S MISUSE, NEGLIGENCE, IMPROPER INSTALLATION OR TESTING, UNAUTHORIZED ATTEMPTS TO REPAIR OR MODIFY, OR ANY OTHER CAUSE BEYOND THE RANGE OF THE INTENDED USE, OR BY ACCIDENT, FIRE, LIGHTNING, OR OTHER HAZARD.

LIMITATION OF LIABILITY: TO THE FULL EXTENT ALLOWED BY LAW TRENDNET ALSO EXCLUDES FOR ITSELF AND ITS SUPPLIERS ANY LIABILITY, WHETHER BASED IN CONTRACT OR TORT (INCLUDING NEGLIGENCE), FOR INCIDENTAL, CONSEQUENTIAL, INDIRECT, SPECIAL, OR PUNITIVE DAMAGES OF ANY KIND, OR FOR LOSS OF REVENUE OR PROFITS, LOSS OF BUSINESS, LOSS OF INFORMATION OR DATA, OR OTHER FINANCIAL LOSS ARISING OUT OF OR IN CONNECTION WITH THE SALE, INSTALLATION, MAINTENANCE, USE, PERFORMANCE, FAILURE, OR INTERRUPTION OF THE POSSIBILITY OF SUCH DAMAGES, AND LIMITS ITS LIABILITY TO REPAIR, REPLACEMENT, OR REFUND OF THE PURCHASE PRICE PAID, AT TRENDNET'S OPTION. THIS DISCLAIMER OF LIABILITY FOR DAMAGES WILL NOT BE AFFECTED IF ANY REMEDY PROVIDED HEREIN SHALL FAIL OF ITS ESSENTIAL PURPOSE.

Governing Law: This Limited Warranty shall be governed by the laws of the state of California.

Note: AC/DC Power Adapter, Cooling Fan, Cables and Power Supply carry a 1-Year Warranty



## Certifications

This equipment has been tested and found to comply with FCC and CE Rules.

Operation is subject to the following two conditions:

- (1) This device may not cause harmful interference.
- (2) This device must accept any interference received. Including interference that may cause undesired operation.



Waste electrical and electronic products must not be disposed of with household waste. Please recycle where facilities exist. Check with your Local Authority or Retailer for recycling advice.



**NOTE:** THE MANUFACTURER IS NOT RESPONSIBLE FOR ANY RADIO OR TV INTERFERENCE CAUSED BY UNAUTHORIZED MODIFICATIONS TO THIS EQUIPMENT. SUCH MODIFICATIONS COULD VOID THE USER'S AUTHORITY TO OPERATE THE EQUIPMENT.

### ADVERTENCIA

En todos nuestros equipos se mencionan claramente las características del adaptador de alimentación necesario para su funcionamiento. El uso de un adaptador distinto al mencionado puede producir daños físicos y/o daños al equipo conectado. El adaptador de alimentación debe operar con voltaje y frecuencia de la energía eléctrica domiciliar existente en el país o zona de instalación.



**TRENDnet**®

## Product Warranty Registration

Please take a moment to register your product online.  
Go to TRENDnet's website at <http://www.trendnet.com/register>

**TRENDnet**®

20675 Manhattan Place  
Torrance, CA 90501  
USA