



## TE100-S16 16-port 10/100Mbps NWay Switch (Rack Mount)

TRENDnet's TE100-S16 is a high performance auto-sensing NWay switch that automatically negotiates between 10Base-T and 100Base-TX network speeds. All ports support half- and full-duplex that allows maximum network performance. It is designed to eliminate unnecessary traffic and relieve congestion on critical network paths. Designed and built to increase network bandwidth, TRENDnet's TE100-S16 is the best solution for both corporate and small business network environments.



### FEATURES

- ...> Compliant with IEEE 802.3 10Base-T, IEEE 802.3u 100Base-TX
- ...> Support 16 UTP/STP RJ-45 10/100Mbps NWay auto-sensing ports
- ...> Auto-MDIX on each port
- ...> Supports store and forward switching architecture with non-blocking full wire-speed performance
- ...> Half- and full-duplex operation for each port
- ...> Supports aging function and 802.3x flow control for full-duplex mode and back pressure flow control for half-duplex mode operation
- ...> Auto-learning of network configuration
- ...> Built-in 8K entries per device for Filtering Address Table
- ...> 512KB per device RAM buffer. Plug and Play
- ...> EIA-19 Rack Mountable
- ...> 5-Year warranty

### BENEFITS

- ...> **Easy Installation:**  
Designed to link 10Mbps and 100Mbps networks.
- ...> **Flexibility:**  
All ports automatically negotiate 10/100Mbps network speed. All ports are Auto-MDIX; connection can be made with either a straight through or a crossover cable.
- ...> **Cost Effectiveness:**  
Provide 10/100Mbps of Fast Ethernet at an affordable rate.
- ...> **Performance:**  
Top performance at an affordable price.



# TE100-S16

## 16-port 10/100Mbps NWay Switch (Rack Mount)

### SPECIFICATIONS

#### Standards:

- IEEE 802.3 10Base-T, IEEE 802.3u 100Base-TX, ANSI/IEEE 802.3 NWay auto-negotiation

#### Connectors:

- 16 10/100Mbps shielded RJ45 Auto-MDIX ports

#### Network Cables:

- Ethernet: Cat. 3,4,5, UTP/STP, EIA/ITA-568 100 Ohm
- Fast Ethernet: Cat. 5, UTP/STP, EIA/TIA-568 100 Ohm

#### Cable Length:

- 100 meters maximum

#### Protocols:

- CSMA/CD

#### Data Transfer Rate:

- Ethernet: 10Mbps (Half-Duplex), 20Mbps (Full-Duplex)
- Fast Ethernet: 100Mbps (Half-Duplex), 200Mbps (Full-Duplex)

#### Data RAM Buffers:

- 512KB per device

#### Filtering Address Table:

- 8K entries per device

#### Internal Power Adapter:

- 100 ~ 240 VAC, 6 watts max.

#### Diagnostic LEDs:

- Power, Link/Activity, 100Mbps

#### Weight:

- approximately 2.0 Kg (4.4 lb.)

#### Dimensions:

- 440 x 140 x 44 mm (17.3 x 5.51 x 1.73 inches) (W x H x D)

#### Temperature:

- Operating: 0° ~ 40°C (32° ~ 104°F)
- Storage: -10° ~ 70°C (14° ~ 158°F)

#### Humidity:

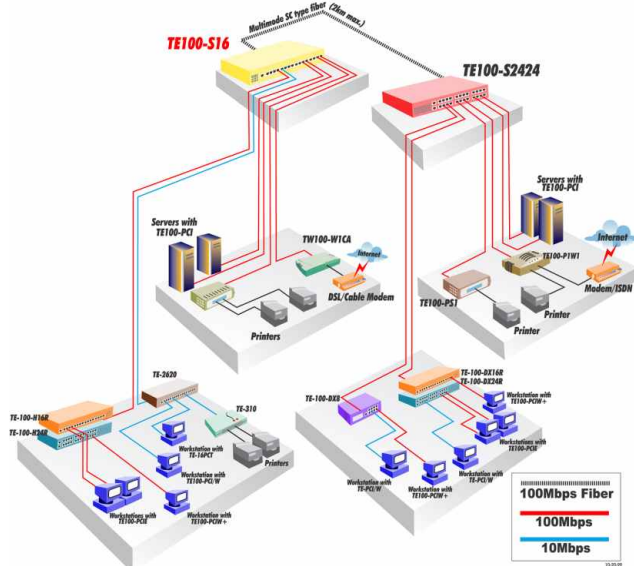
- Operating: 10% ~ 90% RH
- Storage: 5% ~ 90% RH

#### Certifications:

- FCC Class A, CE Mark A, VCCI-A



### NETWORKING SOLUTIONS



**To Order Please Call:**  
**1-888-326-6061**

### RELATED PRODUCT

- **TE100-S16:**  
16-port 10/100Mbps NWay Switch (Rack Mount)
- **TE100-S24:**  
24-port 10/100Mbps NWay Switch (Rack Mount)
- **TE100-S16V:**  
16-port 10/100Mbps Smart Switch with Fiber Slot (Rack Mount)
- **TE100-S24V:**  
24-port 10/100Mbps Smart Switch with Fiber Slot (Rack Mount)
- **TE100-SFXM:**  
SC-type fiber slide-in module for TE100-S16V/S24V

### ORDERING INFORMATION

**TRENDware International, Inc.**  
3135 Kashiwa Street  
Torrance, CA. 90505. USA  
Tel: 310-891-1100  
Fax: 310-891-1111  
Web: [www.TRENDNET.com](http://www.TRENDNET.com)  
Email: [sales@trendware.com](mailto:sales@trendware.com)

