



TE100-PS3plus **10/100Mbps Multi-Protocol Fast Ethernet Print Server**

The TE100-PS3plus is a multiprotocol print server that turns virtually all stand-alone printer into a shared network printer. With the auto-sensing 10/100Mbps RJ-45 port, three parallel printer ports, and the support of the multiprotocol, the TE100-PS3plus can service up to three parallel printers in almost any network environment.



FEATURES

- One 10/100Mbps N-Way Fast Ethernet Port
- Three IEEE 1284-compliant high speed parallel ports
- Easy Configuration through Windows GUI and Telnet
- Supports Windows 95/98/98Me/2000, Windows NT, NetWare, TCP/IP, HP-UX, Unix, Solaris, Sco Unix, MAC, and AppleTalk.
- Support up to 36 Novell NetWare file servers and 64 queues
- Latest MIB-II (RFC 1213) for SNMP - standard management
- LPR program for Windows 95/98 TCP/IP printing
- Flash memory for easy software upgrade
- 5-Year Warranty

Note:
Mac users are required to use a PC to configure the print server. Mac systems are only compatible with Post-Script printers.

BENEFITS

- **Integration Friendly:**
Supports Multiple Protocols.
- **Flexible:**
Install with either 10Base-T or 100Base-TX network.
- **Cost Effective:**
One unit supports up to three Network Printers.
- **Performance:**
Support all major network operating systems.
- **Reliability:**
Full 100Mbps connectivity significantly boosts network printer performance.



TE100-PS3plus

10/100Mbps Multi-Protocol Fast Ethernet Print Server

SPECIFICATIONS

LAN Standards:

- IEEE 802.3 10Base-T and IEEE 802.3u 100Base-TX
 - ANSI/IEEE 802.3 NWay auto-negotiation

LAN Port:

- Auto-negotiating NWay UTP/STP RJ-45 port

Printer Interface:

- 3 x IEEE 1284-parallel ports, IEEE1284 bi-directional parallel ports; Supports bi-directional HP P/L protocol

Network Cables:

- CAT 3, 4, 5 UTP/STP for 10Base-T
- CAT 5 UTP/STP for 100Base-TX

Supported Frame Types:

- IEEE 802.2, IEEE 802.3, Ethernet II, Ethernet SNAP

Supported Protocols:

- TCP/IP, IPX/SPX, NetBEUI, Apple EtherTalk

LED Indicator:

- Power/TX, Link/Rx, LTP1, LTP2, LTP3

Power Consumption:

- 5 VDC, 1.6A, 8 watts max.

Dimensions:

- 220 x 135 x 41 mm (8.66 x 5.31 x 1.61 inch) (L x W x H)

Weight:

- 411 grams, 14.5 Oz.

Temperature:

- Operating: 0°C ~ 50°C (32°F ~ 122°F)
- Storage: -25°C ~ 55°C (-13°F ~ 131°F)

Humidity:

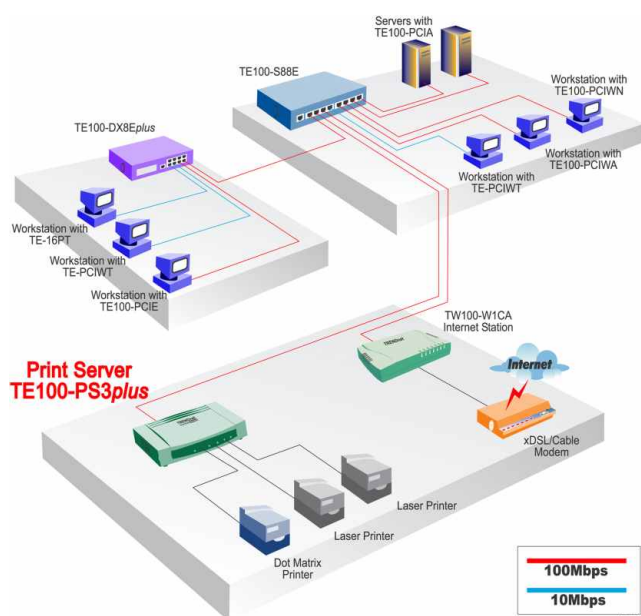
- Operating: 10% - 90% (non-condensing),
- Storage: 5%~90%

Certification:

- FCC Class A, CE Mark A, VCCI-A



NETWORKING SOLUTIONS



To Order Please Call:
1-888-326-6061

RELATED PRODUCT

- **TE100-PS1**
10/100Mbps EtherPort Jr. Multi-Protocol Print Server (1 Parallel Port)
- **TE100-PS1plus**
10/100Mbps EtherPort Multi-Protocol Print Server (1 Parallel Port)
- **TE100-P3**
10/100Mbps EtherPort Jr. Multi-Protocol Print Server (2 Parallel Ports + 1 Serial Port)
- **TE100-PS3plus**
10/100Mbps EtherPort Multi-Protocol Print Server (3 Parallel Ports)
- **TE-310**
EtherPort Print Server for Novell (2 Parallel Ports + 1 Serial Port)
- **TE-360**
EtherPort Jr. Print Server for Novell (1 Parallel Port)

ORDERING INFORMATION

TRENDware International, Inc.

3135 Kashiwa Street
Torrance, CA. 90505. USA

Tel: 310-891-1100

Fax: 310-891-1111

Web: www.TRENDNET.com

Email: sales@trendware.com

