

## Quick Installation Guide

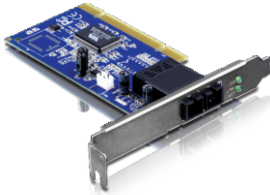


TE100-PCIFC  
1.01

# Table of Contents

Deutsch .....	1
1. Bevor Sie anfangen .....	1
2. Installation .....	2
Troubleshooting .....	5

# 1. Bevor Sie anfangen



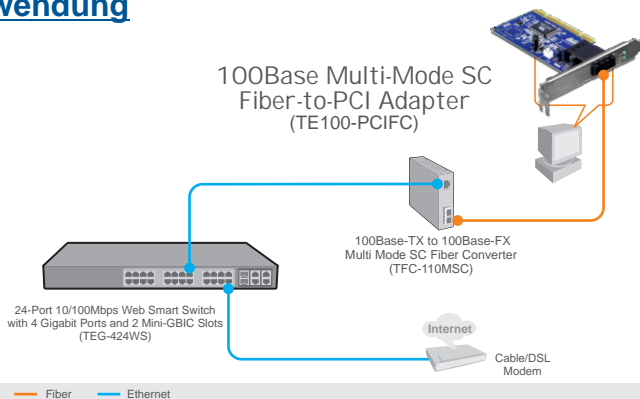
## Packungsinhalt

- TE100-PCIFC
- Treiber CD-ROM
- Mehrsprachige Installationsanleitung

## Systemanforderungen

- 32-Bit PCI-2.2-Steckplatz
- CD-ROM - Laufwerk
- Prozessor: 300 MHz oder schneller/ 800 MHz oder schneller (Windows Vista)
- Speicher: 256MB RAM oder mehr/ 512MB RAM oder mehr (Windows Vista)
- Windows 98SE/ME/2000/2003 Server(32/64-bit) / XP(32/64-bit) / Vista (32/64-bit)
- 62,5/125  $\mu\text{m}$  Multimodus-Glasfaserkabel
- Empfohlener Glasfaserkonverter: TFC-110MSC oder TFC-210MSC
- Empfohlener Gigabit-Switch: TEG-424WS

## Anwendung



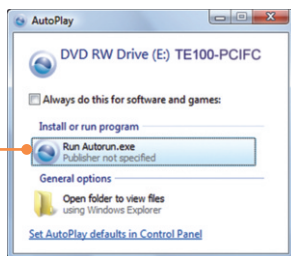
## 2. Installation

### Hinweis:

1. Informationen zur Installation der Treiber für Windows 98SE und ME finden Sie in der Bedienungsanleitung auf der Treiber-CD.
2. Verbinden Sie den TE100-PCIFC erst dann mit Ihrem Computer, wenn Sie dazu aufgefordert werden.

1. Legen Sie die Treiber-CD in Ihr CD-ROM-Laufwerk ein.

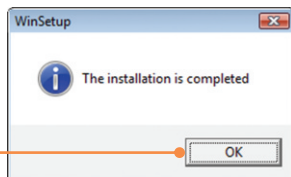
2. Klicken Sie auf Run Autorun.exe (setup.exe ausführen) (nur Bediener Windows Vista).



3. Klicken Sie auf Install Driver (Treiber installieren) und dann auf den Namen Ihres Betriebssystems.



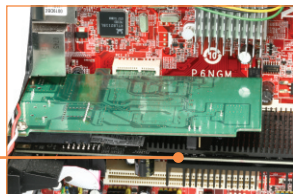
4. Klicken Sie auf OK.



5. Fahren Sie Ihren Computer herunter und öffnen Sie das Gehäuse.



6. Stecken Sie die PCIe-Karte fest in einen freien PCIe-Karten-Steckplatz. Schalten Sie Ihren Computer wieder ein und warten Sie, bis der Windows-Desktop erscheint.



7. Die Treiber werden automatisch installiert.

## Verbindung des TE100-PCIFC mit Ihrem Netzwerk

1. Verbinden Sie den TE100-PCIFC über ein SC-Multimodus-Kabel mit einem 10/100 MBit/s-Glasfaserkonverter (z.B. TFC-110MSC).

Hinweis: Beachten Sie bitte, dass die TX- und RX-Kabel am anderen Ende entgegengesetzt angeschlossen werden müssen.

2. Verbinden Sie den Glasfaserkonverter über ein Ethernetkabel mit einem Gigabit-Ethernet-Port Ihres Switches (z.B. TEG-424WS).



Ihre Installation ist beendet!

Weitere Informationen zu den Konfigurations- und erweiterten Einstellungen des TE100-PCIFC finden Sie in der Bedienungsanleitung auf der beiliegenden Programm-CD.

### Registrieren Sie Ihr Produkt

Nehmen Sie sich bitte einen Moment Zeit und registrieren Sie Ihr Produkt online, so dass Sie unsere umfassenden Support- und Kundendienstleistungen in Anspruch nehmen können: [www.trendnet.com/register](http://www.trendnet.com/register)  
Vielen Dank für den Kauf eines TRENDnet-Produkts

**Q1:** I inserted the Driver CD-ROM into my computer's CD-ROM drive and the installation menu does not appear automatically. What should I do?

**A1:** For Windows 2000/XP/2003 Server, if the installation menu does not appear automatically, click Start, click Run, and type D:\autorun where "D" in "D:\autorun.exe" is the letter assigned to your CD-ROM Drive, and then press the ENTER key on your keyboard. For Windows Vista, if the installation menu does not appear automatically, click Start, click the Start Search box, and type D:\autorun.exe where "D" in "D:\autorun.exe" is the letter assigned to your CD-ROM Drive, and then press the ENTER key on your keyboard.

**Q2:** Windows doesn't recognize my new hardware. What should I do?

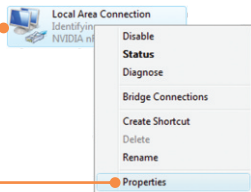
**A2:** First, verify that your computer meets the system requirements as specified in Section 1. Second, access your device manager to make sure the adapter is installed properly. If you see a networking device with a yellow question mark or exclamation point, you will need to reinstall the device and/or the drivers. To access the device manager on Windows 2000/XP, right-click My Computer, click Properties, click the Hardware tab, and then click Device Manager. To access the device manager on Windows Vista, right-click Computer, click Properties and then click Device Manager. Third, if the device manager fails to recognize the presence of a new networking adapter, verify that the network adapter is firmly seated in the PCI slot. Fourth, plug the adapter into another PCI slot on your computer.

**Q3:** Windows recognizes my new hardware, but I'm unable to connect to my network. What should I do?

**A3:** First, verify that the cable is securely connected from your switch or router to your network adapter. Second, verify that the LEDs on your network card are lit. Third, verify that the TCP/IP settings are set to Obtain an IP address automatically (see the steps below).

## Windows Vista

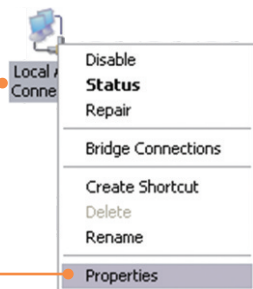
1. Go into the Control Panel, click Network and Internet, click Network and Sharing Center, click Manage Network connections and then right-click the Local Area Connection icon and then click Properties.



2. Click Internet Protocol Version 4(TCP/IPv4) and then click Properties. Then click on Obtain an IP address automatically.

## Windows XP/2000

1. Go into the Control Panel, double-click the Network Connections icon and then right-click the Local Area Connection icon and then click Properties.



2. Click Internet Protocol (TCP/IP) and then click Properties. Then click on Obtain an IP address automatically.

**Q4:** I am not getting a network connection when I connect the TE100-PCIFC to my network. What should I do?

**A4:** First, check the fiber cable. Make sure you are using 62.5/125 $\mu$ m multi-mode fiber cable. Second, make sure the TX and RX cables are reversed on the opposing connection.

**Q5:** What is the maximum distance that is supported by the adapter?

**A5:** 2 kilometers.

If you still encounter problems or have any questions regarding the TE100-PCIFC, please refer to the User's Guide included on the Driver CD-ROM or contact TRENDnet's Technical Support Department.



## Certifications

This equipment has been tested and found to comply with FCC and CE Rules.

Operation is subject to the following two conditions:

- (1) This device may not cause harmful interference.
- (2) This device must accept any interference received. Including interference that may cause undesired operation.



Waste electrical and electronic products must not be disposed of with household waste. Please recycle where facilities exist. Check with your Local Authority or Retailer for recycling advice.



**NOTE:** THE MANUFACTURER IS NOT RESPONSIBLE FOR ANY RADIO OR TV INTERFERENCE CAUSED BY UNAUTHORIZED MODIFICATIONS TO THIS EQUIPMENT. SUCH MODIFICATIONS COULD VOID THE USER'S AUTHORITY TO OPERATE THE EQUIPMENT.

### ADVERTENCIA

En todos nuestros equipos se mencionan claramente las características del adaptador de alimentación necesario para su funcionamiento. El uso de un adaptador distinto al mencionado puede producir daños físicos y/o daños al equipo conectado. El adaptador de alimentación debe operar con voltaje y frecuencia de la energía eléctrica domiciliar existente en el país o zona de instalación.



**TRENDnet**®

## Product Warranty Registration

Please take a moment to register your product online.  
Go to TRENDnet's website at <http://www.trendnet.com/register>

**TRENDnet**®

20675 Manhattan Place  
Torrance, CA 90501  
USA