



Quick Installation Guide



TE100-PCBUSR

Table of Contents

Русский	1
1. Что нужно сделать в самом начале	1
2. Порядок установки	2
Troubleshooting	3

1. Что нужно сделать в самом начале



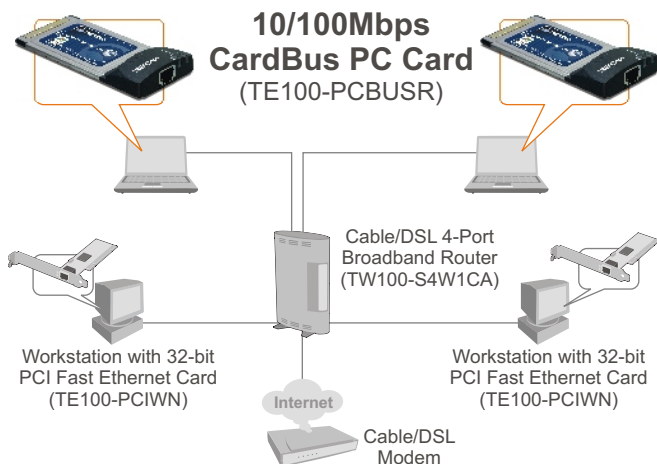
Содержимое упаковки

- TE100-PCBUSR
- Дисконд CD-ROM с драйверами
- Руководство по быстрой установке

Системные требования

- Дисконд CD-ROM
- Гнездо PCMCIA Type II
- Windows 98SE/ME/2000/XP

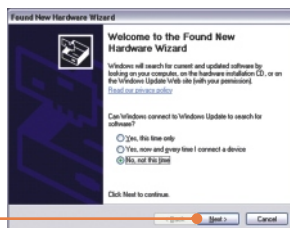
Применение



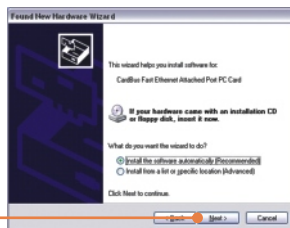
2. Порядок установки

Примечание: устройство TE100-PCBUSR рассчитано на «горячее» подключение, т. е. на возможность его присоединения и отсоединения без перезагрузки компьютера. После того, как плата TE100-PCBUSR будет вставлена в гнездо для PC-карты, появится Мастер установки нового оборудования.

1. Появится Мастер установки нового оборудования. Выберите **Нет** и щелкните по кнопке **Далее**.



2. Установите **CD-ROM-диск с драйвером** в дисковод CD-ROM компьютера и выберите **Next**.



3. Щелкните по кнопке **Завершить**.



Установка завершена.

Подробнее о конфигурировании устройства TE100-PCBUSR и дополнительных настройках можно узнать в разделе «Поиск и устранение неисправностей» руководства пользователя на CD-ROM-диске или на веб-сайте Trendnet по адресу <http://www.trendnet.com>.

Q1: Windows is unable to recognize my hardware. What should I do?

A1: Make sure your computer meets the minimum requirements as specified in Section 1 of this Quick Installation Guide. Also make sure that you have fully inserted the TE100-PCBUSR Ethernet PC Card adapter into the PC Card slot of your computer.

Q2: I successfully installed and verified installation of the TE100-PCBUSR Ethernet PC Card adapter, but I can not connect to the Internet. What should I do?

A2: Check and verify that the connection of the RJ-45 network cable between the TE100-PCBUSR and the switch/router are secure and in working order. Next, check the "Link/ACT" lights of the TE100-PCBUSR and verify that there is network activity between the Ethernet adapter and your wired network. Finally, check the operation of your network and verify that your computer's TCP/IP settings are correct.

Q3: Why is my network connection slow?

A3: Check the network activity of the users on your network and make sure they are not slowing down the network by downloading large files. Also check the operation and configuration of your network; if your computer is connected to a network that operates at 10Mbps, you might want to consider upgrading your network hardware to operate at 100Mbps or faster.

If you still encounter problems or have any questions regarding the TE100-PCBUSR, please refer to the User's Guide included on the Driver CD-ROM or contact Trendnet's Technical Support Department.

Certifications

This equipment has been tested and found to comply with FCC and CE Rules.

Operation is subject to the following two conditions:

- (1) This device may not cause harmful interference.
- (2) This device must accept any interference received. Including interference that may cause undesired operation.



Waste electrical and electronic products must not be disposed of with household waste. Please recycle where facilities exist. Check with you Local Authority or Retailer for recycling advice.



NOTE: THE MANUFACTURER IS NOT RESPONSIBLE FOR ANY RADIO OR TV INTERFERENCE CAUSED BY UNAUTHORIZED MODIFICATIONS TO THIS EQUIPMENT. SUCH MODIFICATIONS COULD VOID THE USER'S AUTHORITY TO OPERATE THE EQUIPMENT.

ADVERTENCIA

En todos nuestros equipos se mencionan claramente las características del adaptador de alimentación necesario para su funcionamiento. El uso de un adaptador distinto al mencionado puede producir daños físicos y/o daños al equipo conectado. El adaptador de alimentación debe operar con voltaje y frecuencia de la energía eléctrica domiciliar existente en el país o zona de instalación.



TRENDnet[®]

TRENDnet Technical Support

US • Canada

Toll Free Telephone: 1(866) 845-3673

24/7 Tech Support



Europe (Germany • France • Italy • Spain • Switzerland • UK)

Toll Free Telephone: +00800 60 76 76 67

English/Espanol - 24/7

Francais/Deutsch - 11am-8pm, Monday - Friday MET

Worldwide

Telephone: +(31) (0) 20 504 05 35

English/Espanol - 24/7

Francais/Deutsch - 11am-8pm, Monday - Friday MET

Product Warranty Registration

Please take a moment to register your product online.

Go to TRENDnet's website at <http://www.trendnet.com>

TRENDnet[®]

20675 Manhattan Place
Torrance, CA 90501
USA