



Quick Installation Guide



TE100-PCBUSR

Table of Contents

Français	1
1. Avant de commencer	1
2. Procéder à l'installation	2
Troubleshooting	3

1. Avant de commencer



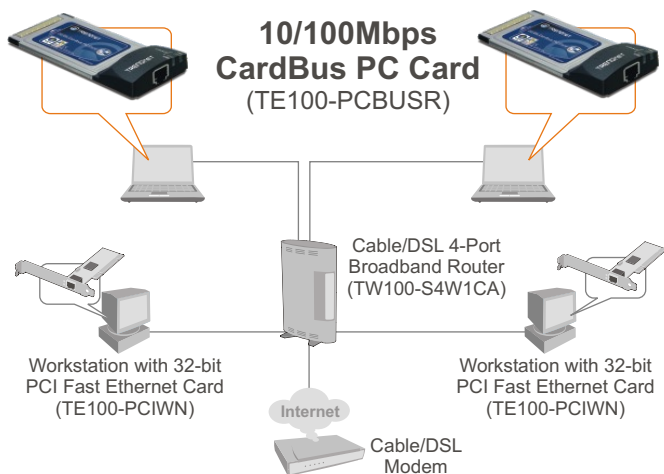
Contenu de l'emballage

- TE100-PCBUSR
- Pilote sur CD-ROM
- Guide d'installation rapide

Configuration du système

- Lecteur de CD-ROM
- Logement PCMCIA de type II
- Windows Vista/XP/2000/ME/98SE

Application



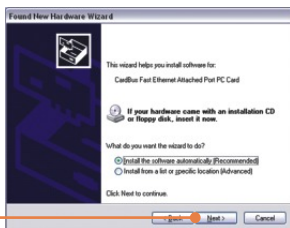
2. Procéder à l'installation

Remarque : Le TE100-PCBUSR est connectable à chaud, vous pouvez donc le brancher ou le débrancher alors que l'ordinateur est allumé. Après avoir inséré le TE100-PCBUSR dans votre logement pour carte PC, l'Assistant « nouveau matériel détecté » apparaît.

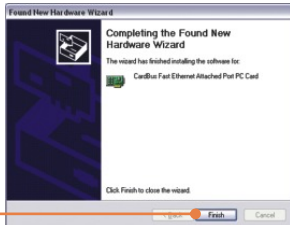
1. L'**assistant nouveau matériel détecté** apparaîtra, sélectionnez **Non** et cliquez ensuite sur **Suivant**.



2. Insérez le **CD-ROM avec le pilote** dans le lecteur de CD-ROM de votre ordinateur et cliquez ensuite sur **Next** (Suivant).



3. Cliquez sur **Finish** (Terminer).



L'installation est maintenant complète.

Si vous désirez des informations détaillées sur la configuration et les paramètres avancés du TE100-PCBUSR, veuillez consulter la rubrique Dépannage, le guide de l'utilisateur sur CD-ROM ou le site Internet de Trendnet sur <http://www.trendnet.com>.

Q1: Windows is unable to recognize my hardware. What should I do?

A1: Make sure your computer meets the minimum requirements as specified in Section 1 of this Quick Installation Guide. Also make sure that you have fully inserted the TE100-PCBUSR Ethernet PC Card adapter into the PC Card slot of your computer.

Q2: I successfully installed and verified installation of the TE100-PCBUSR Ethernet PC Card adapter, but I can not connect to the Internet. What should I do?

A2: Check and verify that the connection of the RJ-45 network cable between the TE100-PCBUSR and the switch/router are secure and in working order. Next, check the "Link/ACT" lights of the TE100-PCBUSR and verify that there is network activity between the Ethernet adapter and your wired network. Finally, check the operation of your network and verify that your computer's TCP/IP settings are correct.

Q3: Why is my network connection slow?

A3: Check the network activity of the users on your network and make sure they are not slowing down the network by downloading large files. Also check the operation and configuration of your network; if your computer is connected to a network that operates at 10Mbps, you might want to consider upgrading your network hardware to operate at 100Mbps or faster.

If you still encounter problems or have any questions regarding the TE100-PCBUSR, please refer to the User's Guide included on the Driver CD-ROM or contact Trendnet's Technical Support Department.

Register Your Product

To ensure the highest level of customer service and support, please take a moment to register your product Online at: www.trendnet.com/register

Thank you for choosing TRENDnet

Certifications

This equipment has been tested and found to comply with FCC and CE Rules.

Operation is subject to the following two conditions:

- (1) This device may not cause harmful interference.
- (2) This device must accept any interference received. Including interference that may cause undesired operation.



Waste electrical and electronic products must not be disposed of with household waste. Please recycle where facilities exist. Check with you Local Authority or Retailer for recycling advice.



NOTE: THE MANUFACTURER IS NOT RESPONSIBLE FOR ANY RADIO OR TV INTERFERENCE CAUSED BY UNAUTHORIZED MODIFICATIONS TO THIS EQUIPMENT. SUCH MODIFICATIONS COULD VOID THE USER'S AUTHORITY TO OPERATE THE EQUIPMENT.

ADVERTENCIA

En todos nuestros equipos se mencionan claramente las características del adaptador de alimentación necesario para su funcionamiento. El uso de un adaptador distinto al mencionado puede producir daños físicos y/o daños al equipo conectado. El adaptador de alimentación debe operar con voltaje y frecuencia de la energía eléctrica domiciliar existente en el país o zona de instalación.



TRENDnet[®]

TRENDnet Technical Support

US • Canada

Toll Free Telephone: 1(866) 845-3673

24/7 Tech Support



Europe (Germany • France • Italy • Spain • Switzerland • UK)

Toll Free Telephone: +00800 60 76 76 67

English/Espanol - 24/7

Francais/Deutsch - 11am-8pm, Monday - Friday MET

Worldwide

Telephone: +(31) (0) 20 504 05 35

English/Espanol - 24/7

Francais/Deutsch - 11am-8pm, Monday - Friday MET

Product Warranty Registration

Please take a moment to register your product online.

Go to TRENDnet's website at <http://www.trendnet.com/register>

TRENDnet[®]

20675 Manhattan Place
Torrance, CA 90501
USA