



## Quick Installation Guide



**TE100-PCBUSR**

# Table of Contents

English .....	1
1. Before You Start .....	1
2. How to Install .....	2
Troubleshooting .....	3

# 1. Before You Start



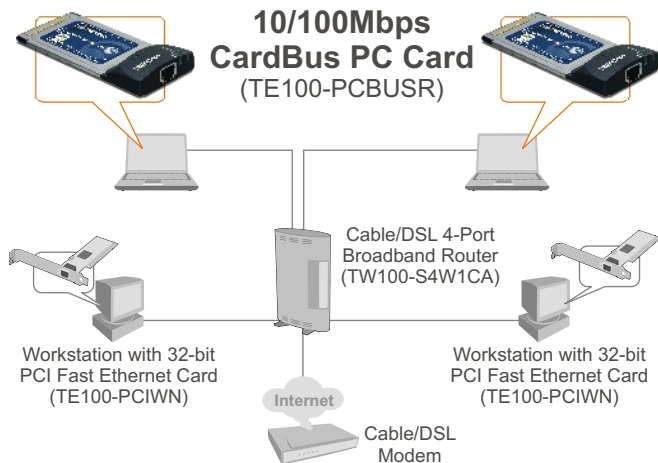
## Package Content

- TE100-PCBUSR
- Driver CD-ROM
- Quick Installation Guide

## System Requirements

- CD-ROM Drive
- PCMCIA Type II slot
- Windows 98SE/ME/2000/XP

## Application



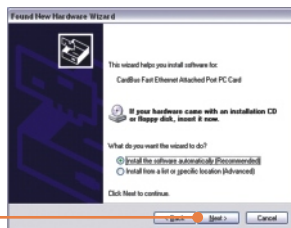
## 2. How to Install

Note: The TE100-PCBUSR is hot-pluggable, you can connect or disconnect the TE100-PCBUSR while the computer is on. After inserting the TE100-PCBUSR into your PC Card slot, the Found New Hardware Wizard appears.

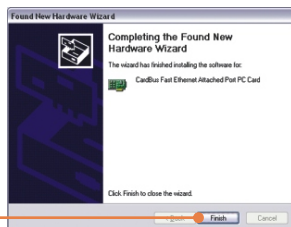
1. The **Found New Hardware Wizard** appears, select **No**, and then click **Next**.



2. Insert the **Driver CD-ROM** into your computer's CD-ROM Drive and then click **Next**.



3. Click **Finish**.



**Your installation is now complete.**

For detailed information regarding the TE100-PCBUSR configuration and advanced settings, please refer to the User's Guide included on the Driver CD-ROM or TRENDnet's website at [www.trendnet.com](http://www.trendnet.com)

**Q1: Windows is unable to recognize my hardware. What should I do?**

**A1:** Make sure your computer meets the minimum requirements as specified in Section 1 of this Quick Installation Guide. Also make sure that you have fully inserted the TE100-PCBUSR Ethernet PC Card adapter into the PC Card slot of your computer.

**Q2: I successfully installed and verified installation of the TE100-PCBUSR Ethernet PC Card adapter, but I can not connect to the Internet. What should I do?**

**A2:** Check and verify that the connection of the RJ-45 network cable between the TE100-PCBUSR and the switch/router are secure and in working order. Next, check the "Link/ACT" lights of the TE100-PCBUSR and verify that there is network activity between the Ethernet adapter and your wired network. Finally, check the operation of your network and verify that your computer's TCP/IP settings are correct.

**Q3: Why is my network connection slow?**

**A3:** Check the network activity of the users on your network and make sure they are not slowing down the network by downloading large files. Also check the operation and configuration of your network; if your computer is connected to a network that operates at 10Mbps, you might want to consider upgrading your network hardware to operate at 100Mbps or faster.

If you still encounter problems or have any questions regarding the TE100-PCBUSR, please refer to the User's Guide included on the Driver CD-ROM or contact Trendnet's Technical Support Department.

## Certifications

This equipment has been tested and found to comply with FCC and CE Rules.

Operation is subject to the following two conditions:

- (1) This device may not cause harmful interference.
- (2) This device must accept any interference received. Including interference that may cause undesired operation.



Waste electrical and electronic products must not be disposed of with household waste. Please recycle where facilities exist. Check with you Local Authority or Retailer for recycling advice.



**NOTE:** THE MANUFACTURER IS NOT RESPONSIBLE FOR ANY RADIO OR TV INTERFERENCE CAUSED BY UNAUTHORIZED MODIFICATIONS TO THIS EQUIPMENT. SUCH MODIFICATIONS COULD VOID THE USER'S AUTHORITY TO OPERATE THE EQUIPMENT.

## ADVERTENCIA

En todos nuestros equipos se mencionan claramente las características del adaptador de alimentación necesario para su funcionamiento. El uso de un adaptador distinto al mencionado puede producir daños físicos y/o daños al equipo conectado. El adaptador de alimentación debe operar con voltaje y frecuencia de la energía eléctrica domiciliar existente en el país o zona de instalación.



# TRENDnet<sup>®</sup>

## TRENDnet Technical Support

### US • Canada

**Toll Free Telephone:** 1(866) 845-3673

24/7 Tech Support



### Europe (Germany • France • Italy • Spain • Switzerland • UK)

**Toll Free Telephone:** +00800 60 76 76 67

English/Espanol - 24/7

Francais/Deutsch - 11am-8pm, Monday - Friday MET

### Worldwide

**Telephone:** +[31] [0] 20 504 05 35

English/Espanol - 24/7

Francais/Deutsch - 11am-8pm, Monday - Friday MET

## Product Warranty Registration

Please take a moment to register your product online.

Go to TRENDnet's website at <http://www.trendnet.com>

# TRENDnet<sup>®</sup>

20675 Manhattan Place  
Torrance, CA 90501  
USA