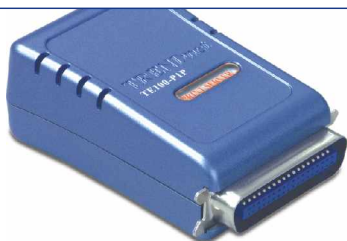


# TE100-P1P

## Quick Installation Guide

Version 08.11.05



**TRENDnet**<sup>®</sup>  
TRENDware, USA  
**What's Next in Networking**

# Table of Contents

|   |    |
|---|----|
| English .....                               | 1  |
| 1. Prepare for Installation .....           | 1  |
| 2. Product Detail .....                     | 2  |
| 3. Hardware Installation .....              | 3  |
| 4. Configure the Print Server .....         | 4  |
| 5. Add the Network Printer to your PC ..... | 8  |
| Troubleshooting .....                       | 11 |

# English QIG

## 1. Prepare for Installation

Thank you for purchasing TRENDnet's TE100-P1P 10/100Mbps Parallel Print Server.

This guide will help you set up your Print Server. Following the installations should be quick and easy. If you run into problems, please refer to the Troubleshooting section. If you need further technical support, please visit [www.TRENDNET.com](http://www.TRENDNET.com) or call technical support by phone.

### Verify Package Contents

Please make sure you have everything in the box:



## 2. Product Detail

The Print Server has a RJ-45 connector, and 1 Parallel port. It also has three LEDs that indicate power, network activity, and printer activity.



Parallel Port



Power Adapter Connector

Power

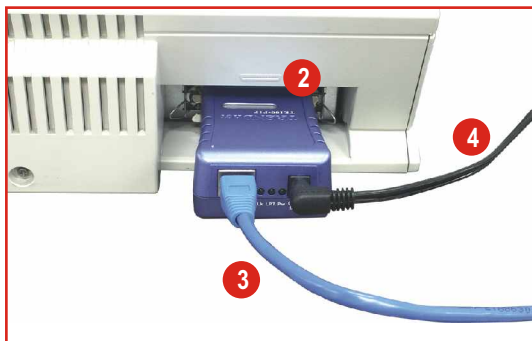
Printer Activity

Network Activity

RJ-45 Connector

## 3. Hardware Installation

1. Power off the Print Server and Printers.
2. Connect the Print Server's printer port to the printers.
3. Connect the RJ45 cable to the LAN port and to your network hub or switch.
4. Plug the AC power adapter into the power connector on the back of the Print Server.
5. Power on the printer.

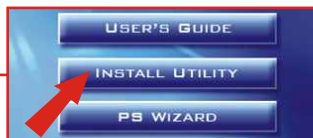
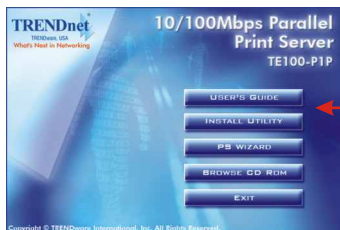


# 4. Configure the Print Server

**NOTE:** For MAC Users, change your computers IP address to 192.168.0.X (where X is an available number from 1-253), and enter 192.168.0.1 in your web browser to access the Print Server's Web Utility.

## For Windows Users

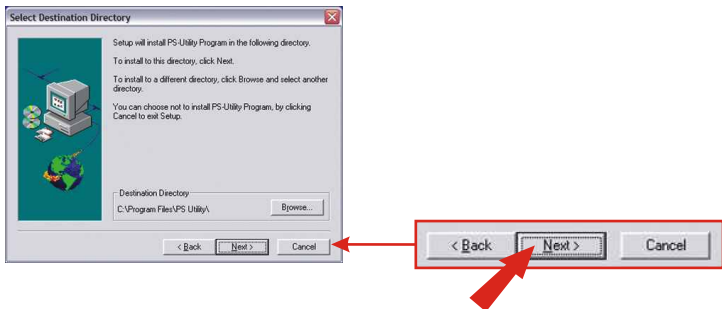
1. Insert the TE100-P1P CD-ROM into your computer's CD-ROM drive.
2. Click **Install Utility**.



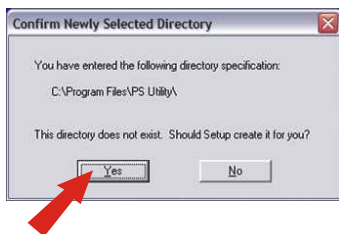
3. Click **Next**.



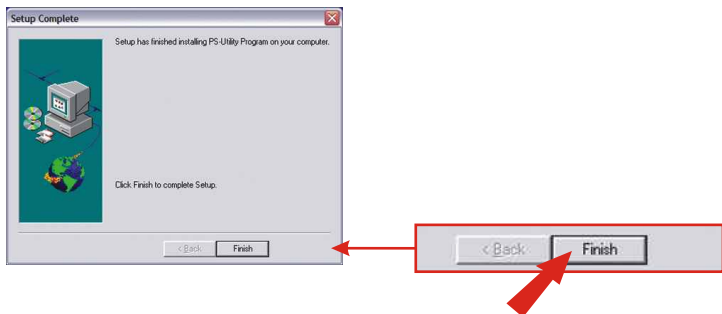
#### 4. Click Next.



#### 5. Click Yes.



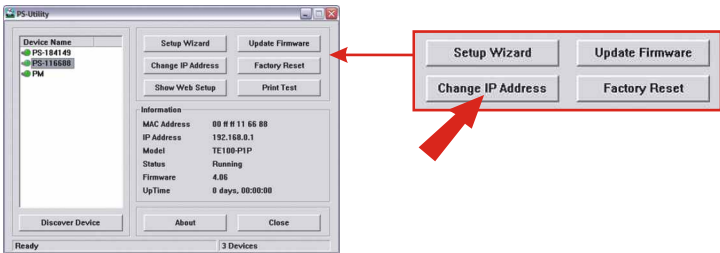
#### 6. Click Finish.



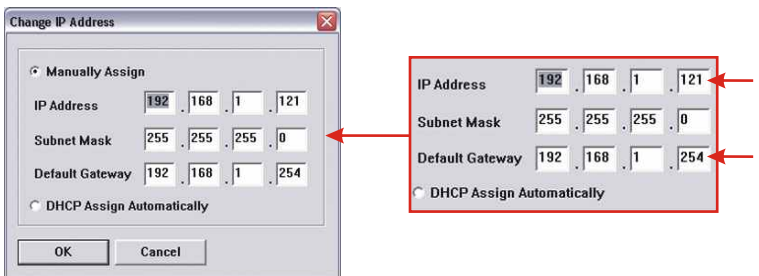
7. Double-click **PS-Utility** icon.



8. The utility will detect any available Print Servers on the network. Select the Print Server you need to configure and click **Change IP Address**.



9. Type in the IP address that applies to your existing network. Type in the Default Gateway (i.e. your router's local IP address).

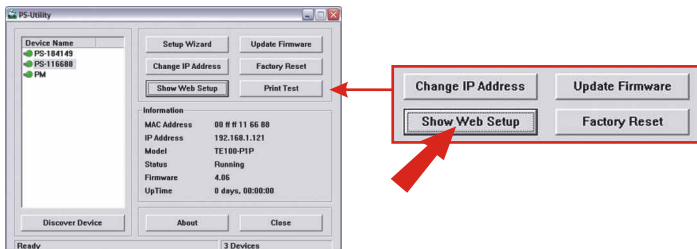




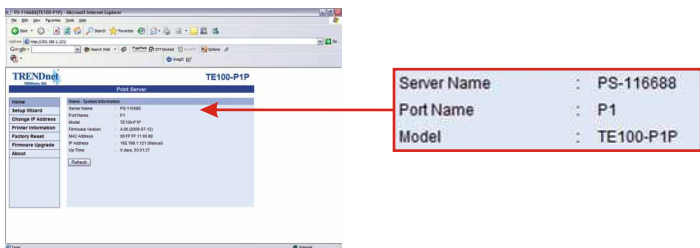
10. Click **OK**.



11. Click **Show Web Setup**.



12. Please take note and write down the **Server Name** and the **Printer Name**.



Print Server's configuration is now complete. For detail information, please check the User's Guide that's included on the CD-ROM.

# 5. Add the Network Printer to your PC

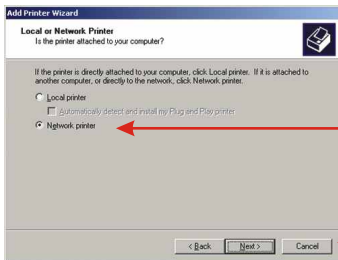
## For Windows 95/98/ME/2000/XP

**Note:** If you are using Windows 95/98/ME, then make sure that NETBEUI is installed before you follow the instructions below. If you are using Windows 2000/XP, then you can simply add your printer using the instructions below. For TCP/IP Printing instructions, please consult the User's Guide on the CD-ROM for details.

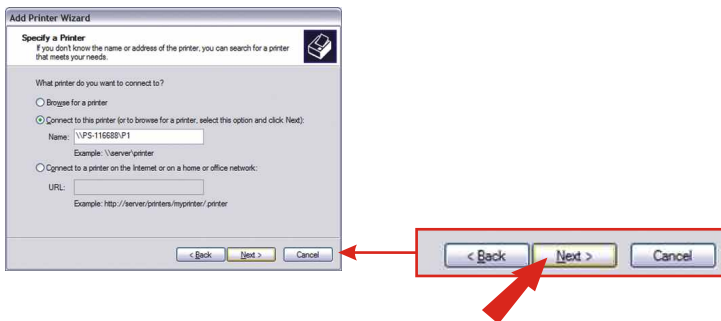
1. For Windows 2000/XP, Click **Start** → **Control Panel**.  
For Windows 95/98/ME, Click **Start** → **Settings** → **Control Panel**.
2. Double-Click the **Printers and Faxes** Icon.
3. Click or Double-Click **Add Printer**.
4. Click **Next**.



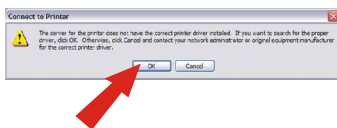
5. Select **Network Printer** option and click **Next**.



6. Click the option that allows you to type the printer's name. Type the server name and the printer name in the following format: **\\server name\printer\_name**. For example, type **\\PS-116688\P1** with **NO SPACES** in between them. Click **Next**.



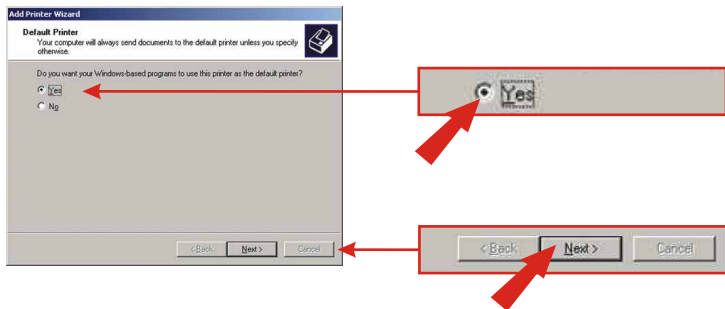
7. Click **OK**.



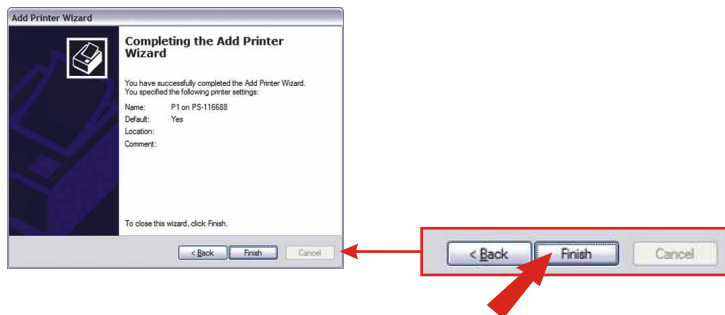
8. Select the appropriate driver for your printer.



## 9. Click **Yes**. Click **Next**.



## 10. Click **Finish**.



You have completed adding the printer to your PC. If there is more than 1 printer, please repeat the steps 1~10 until all printers are added to your PC.

# Troubleshooting

**Q1: I cannot add a network printer after I typed the server name and printer name.**

**A1:** Please double check your hardware connections. Make sure that your printer is connected properly to the print server and your power adapter is connected properly to a power outlet. (See **3. Hardware Installation**)

**Q2: I have double checked my hardware connections and have verified that everything is connected properly, but I still cannot connect to my printer after I typed in the server name and printer name.**

**A2:** Make sure that you are typing the correct printer name.

**Q3: I verified that the hardware installation is correct and typed the correct printer name, but I still cannot find the network printer.**

**A3:** Make sure that the server name and printer name is entered correctly. There should be no spaces, and the back slashes that separate the server name and printer name should be this, \\, instead of this, //. (See **5. Add Network Printer**).

**Q4: I typed in the server name and printer name correctly and successfully installed the network printer. But I can't print a test page.**

**A4:** Make sure that the printer is **online** by turning the printer on. Make sure the power adapter of your printer is properly connected to a power outlet.

**Q5: I successfully added a network printer to my computer, and my printer is receiving power. I can also print a test page, but I cannot print anything from Microsoft Word or other applications.**

**A5:** Make sure to set the newly installed network printer to your **default** printer.

If you have any questions regarding the **TE100-P1P 10/100Mbps Parallel Print Server**, please contact Trendware Technical Support Department.

## Certifications

This equipment has been tested and found to comply with FCC and CE Rules. Operation is subject to the following two conditions:

- (1) This device may not cause harmful interference.
- (2) This device must accept any interference received.  
Including interference that may cause undesired operation.



**NOTE:** THE MANUFACTURER IS NOT RESPONSIBLE FOR ANY RADIO OR TV INTERFERENCE CAUSED BY UNAUTHORIZED MODIFICATIONS TO THIS EQUIPMENT. SUCH MODIFICATIONS COULD VOID THE USER'S AUTHORITY TO OPERATE THE EQUIPMENT.



## Product Warranty Registration

Please take a moment to register your product online.  
Go to TRENDware's website at <http://www.TRENDNET.com>

### TRENDnet Technical Support

#### US/Canada Support Center

**Contact**

**Telephone:** 1(310) 626-6252

**Fax:** 1(310) 626-6267

**Email:** [support@trendnet.com](mailto:support@trendnet.com)

**Tech Support Hours**

7:30am - 6:00pm Pacific Standard Time  
Monday - Friday

#### European Support Center

**Contact****Telephone**

Deutsch : +49 (0) 6331 / 268-460

Français : +49 (0) 6331 / 268-461

08-00-90-71-61 (numéro vert)

Español : +49 (0) 6331 / 268-462

English : +49 (0) 6331 / 268-463

Italiano : +49 (0) 6331 / 268-464

Dutch : +49 (0) 6331 / 268-465

**Fax:** +49 (0) 6331 / 268-466

**Tech Support Hours**

8:00am - 6:00pm Middle European Time  
Monday - Friday

**TRENDware International, Inc.**  
3135 Kashiwa Street. Torrance, CA 90505  
**<http://www.TRENDNET.com>**