



TRENDnet



Quick Installation Guide



TE100-P1P

Table of Contents

English	1
1. Before You Start	1
2. How to Connect	2
3. Configure the Print Server	3
4. Add the Network Printer to your PC	5
Troubleshooting	7

1. Before You Start



Package Content

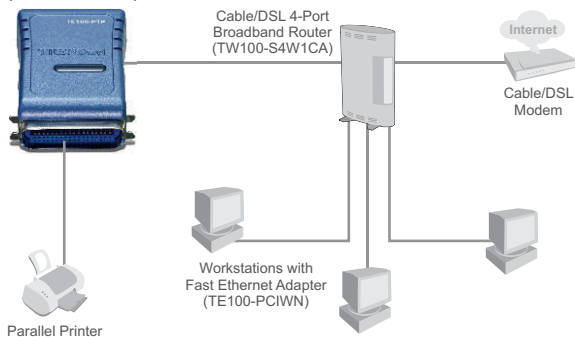
- TE100-P1P
- Quick Installation Guide
- Utility CD-ROM
- Power Adapter (5V, 2.5A)

System Requirements

- CD-ROM Drive
- CPU: Intel Pentium 100Mhz or above
- Memory: 8MB or above
- Windows 2003/XP/2000/ME/98SE, Unixware, Linux, Mac OS X

Application

10/100Mbps Parallel Print Server (TE100-P1P)



*Mac Systems are only compatible with Post-Script printers

2. How to Connect

Note: Please power off all printers before connecting them to the print server.

1. Connect the Print Server's Parallel Port directly to the Parallel Port of the printer.



2. Connect a RJ-45 network cable from a Switch/Router to the LAN port of the Print Server.



3. Connect the AC Power Adapter to the Print Server and then to a power outlet.

4. Power ON printer.

3. Configure the Print Server

Note: The Print Server can be managed using the PS-Utility or a web browser. For Mac Users, change your computers IP address to 192.168.0.X (where X is an available number from 2-254), and enter 192.168.0.1 in your web browser to access the Print Server's Web Utility. (The Print Server Utility only requires to be installed on one of the network PCs)

For Windows Users

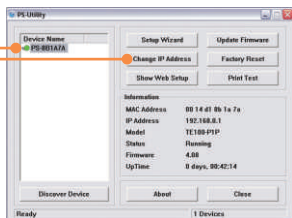
1. Insert the **Utility CD-ROM** into your computer's CD-ROM Drive and then click **Install Utility**. Follow the **InstallShield Wizard** instructions. Click **Finish**.



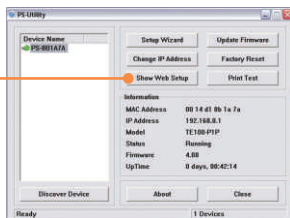
2. Click **Start > All Programs > PS-Utility**, and then click **PS-Utility**.



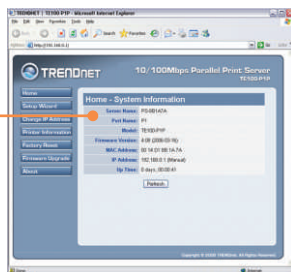
3. Click the Print Server and click **Change IP Address**. Manually set the **IP Address** of the Print Server and then click **OK**.
Note: The IP Address must match the same network segment as your computer.



4. Click **Show Web Setup**.



5. Write down the **Server Name** and **Port Name**.



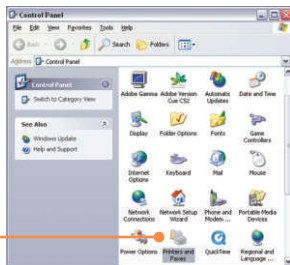
Print Server configuration is now complete.

4. Add the Network Printer to your PC

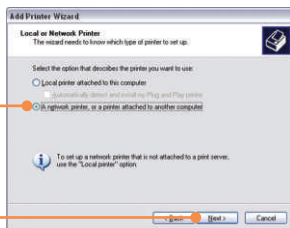
Note: For TCP/IP Printing instructions, please consult the User's Guide included on the Utility CD-ROM.

Windows 2000/XP

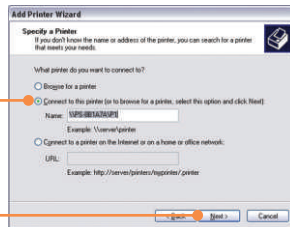
1. Go into the **Control Panel** and double-click the **Printers and Faxes** icon. Click **Add Printer** and then click **Next**.



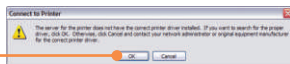
2. Select **Network Printer** and then click **Next**.



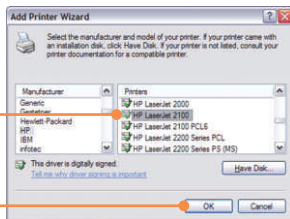
3. Select **Connect to this printer** and type in the server name and the printer name in the following format:
`\\server_name\printer_name`
Click **Next**.



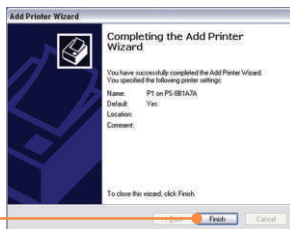
4. Click **OK**.



5. Select the appropriate driver for your printer and then click **OK**.



6. Click **Finish**.



7. Repeat steps 1 to 6 to add the network printer to the computers on the network.

Add Network Printer is now complete.

For detailed information regarding the TE100-P1P configuration and advanced settings, please refer to the User's Guide included on the Utility CD-ROM or TRENDnet's website at www.trendnet.com

Q1. I correctly typed in the print server name and printer name, but I still cannot add a network printer. What should I do?

A1. Double check your hardware connections; make sure that the print server and printer are powered ON and are properly connected. Also verify that the spelling of the server name and printer name are correct.

Q2. I verified that the hardware installation is correct and that the print server name and printer name are correct, but I still cannot find the network printer. What should I do?

A2. Make sure that the print server name and printer name are entered correctly. There should be no spaces, and the back slashes that separate the print server name and printer name should be this, \\, instead of this, //. Note that the Port Name is the same name used to identify the Printer Name.

Q3. I successfully added a network printer to my computer and I can print a test page, but I cannot print anything from Microsoft Word or other applications.

A3. Make sure to set the newly installed network printer as your **default** printer. Click Start and then click Printers & Faxes, verify that your printer icon has a check on it.

Q4. I configured my print server to automatically receive an IP Address from a DHCP server, and now I cannot go into the print server's web utility.

A4. Open PS-Utility v3.00 (See 3. Configure the Print Server) to locate your print server's IP Address. For Mac users, press the Reset button at the back of the TE100-P1P, hold the button for 15 seconds, release the button, and enter <http://192.168.0.1> in a web browser to access the web features.

Certifications

This equipment has been tested and found to comply with FCC and CE Rules. Operation is subject to the following two conditions:

- (1) This device may not cause harmful interference.
- (2) This device must accept any interference received.

Including interference that may cause undesired operation.



Waste electrical and electronic products must not be disposed of with household waste. Please recycle where facilities exist. Check with you Local Authority or Retailer for recycling advice.



NOTE: THE MANUFACTURER IS NOT RESPONSIBLE FOR ANY RADIO OR TV INTERFERENCE CAUSED BY UNAUTHORIZED MODIFICATIONS TO THIS EQUIPMENT. SUCH MODIFICATIONS COULD VOID THE USER'S AUTHORITY TO OPERATE THE EQUIPMENT.



TRENDnet

TRENDnet Technical Support

US/Canada Support Center

Contact

Telephone: 1(866) 845-3673

Email: support@trendnet.com

Tech Support Hours

24/7 Toll Free Tech Support

European Support Center

Contact

Visit our website for detail contact information

[http:// www.trendnet.com/support](http://www.trendnet.com/support)



Product Warranty Registration

Please take a moment to register your product online.

Go to TRENDnet's website at <http://www.trendnet.com>

TRENDnet

3135 Kashiwa Street
Torrance, CA 90505
USA