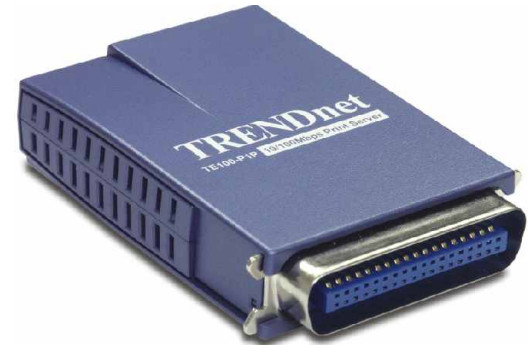




TE100-P1P **10/100Mbps Mini Print Server with 1 Parallel Printer Port**

TRENDnet's TE100-P1P 10/100Mbps Mini Parallel Port Print Server is designed to transform any conventional stand-alone parallel port printer into a shared resource on your network. TE100-P1P has a 10/100Mbps auto-sensing RJ-45 port, which connects to either 10Mbps or 100Mbps network. With its "Automatic IP" feature, the Print Server will automatically configure its IP address, making installation quick and easy. For advanced management, you can configure the print server using the Windows-Based Wizard, Admin Software or Web Browser. Also, the TE100-P1P supports Internet Printing Protocol, so users can print remotely to the parallel printer via the Internet. Compact in design, but packed with features the TE100-P1P is the most cost effective way to add a parallel printer anywhere on your network!



FEATURES

- One 10/100Mbps Auto-Sensing Fast Ethernet Port
- One IEEE 1284-compliant high speed parallel port (Type B Centronic 36-pin male)
- Acts as a DHCP client or use "Auto-IP" to self-assign an IP address automatically
- Supports TCP/IP, NetBEUI, IPX/SPX and AppleTalk protocols
- Easy Configuration through BiAdmin (Windows Application), Web-based management (HTTP), PC-based SNMP applications, FTP and Telnet
- Supports Windows 9x/NT/Me/2000/XP, Macintosh (OS 9.x and higher), Unix, Netware 3.x/4.x/5.x
- Supports PTP, LPD, SMB, IPP (Internet Printing Protocol), Mac LaserWriter/Chooser (EtherTalk) and NetWare NDPS LPR Printing.
- Supports Diagnostic Printing & Hardware Reset Button
- Upgradeable Firmware
- 3-Year Warranty

BENEFITS

- **Integration Friendly:**
Supports multiple protocols and all popular Operating Systems.
- **Flexible:**
Integrates with either 10Base-T or 100Base-TX network.
- **Cost Effective:**
Turns the stand-alone printer into a shared resource as a network printer.
- **Performance:**
Full 100Mbps connectivity significantly boosts network printer performance.



TE100-P1P

10/100Mbps Mini Print Server with 1 Parallel Printer Port

SPECIFICATIONS

LAN Standards:

- IEEE 802.3 10Base-T and IEEE 802.3u 100Base-TX
ANSI/IEEE 802.3 Auto-Negotiation

LAN Port:

- UTP/STP RJ-45 port

Printer Interface:

- IEEE1284 Type B (DB-36) Centronics (Nibble/Byte mode support)

Network Cables:

- 10Base-T: CAT 3, 4, 5 UTP/STP (100 meter max.)
- 100Base-TX: CAT 5 UTP/STP (100 meter max.)

Supported Protocols:

- TCP/IP, NetBEUI, IPX/SPX, and AppleTalk

LED Indicator:

- 10BaseT, 100BaseTx, Status and Error

Power:

- 9 VDC, 500mA External Power Adapter

Dimensions(LxWxH):

- 87 mm x 57 mm x 25 mm (3.4x 2.2 x 1 inch)

Weight:

- 70.9 g. (2.5 Oz.)

Temperature:

- Operating Temperature: 0° ~ 40° C (32° ~ 104° F)
- Storage Temperature: -10° ~ 70° C (14° ~ 158° F)

Humidity:

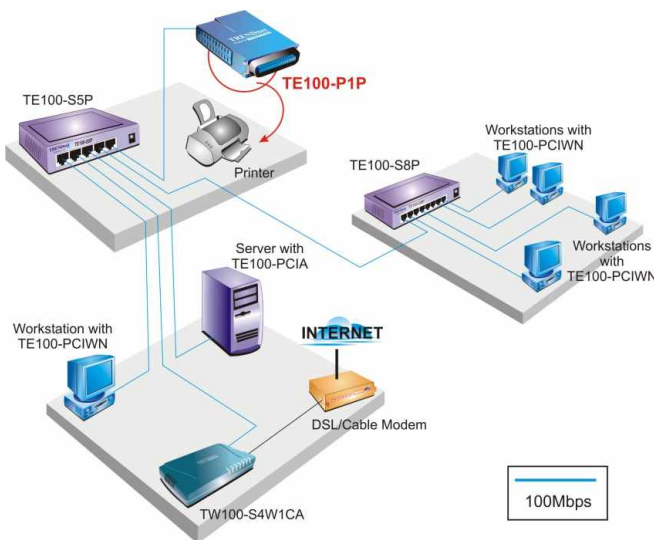
- Operating: 10% to 80%
- Storage: 5% to 90%

Certifications:

- FCC, CE, VCCI, C-Tick



NETWORKING SOLUTIONS



To Order Please Call:
1-888-326-6061

RELATED PRODUCT

- ➡ **TE100-P1P:** 10/100Mbps Mini Print Server with 1 Parallel Printer Port
- ➡ **TE100-P1U:** 10/100Mbps Mini Print Server with 1 USB Printer Port
- ➡ **TEW-P1U1P:** 11Mbps Wireless 1 USB + 1 Parallel Port Print Server
- ➡ **TEW-P1U:** 11Mbps Wireless 1 USB Port Print Server
- ➡ **TEW-P1P:** 11Mbps Wireless 1 Parallel Port Print Server
- ➡ **TE100-P2U1P:** 10/100Mbps 2 USB + 1 Parallel Printer Port Print Server
- ➡ **TE100-S5P:** 5-port 10/100Mbps Mini Switch
- ➡ **TE100-S8P:** 8-port 10/100Mbps Mini Switch

ORDERING INFORMATION

TRENDware International, Inc.

3135 Kashiwa Street
Torrance, CA. 90505. USA

Tel: 310-891-1100

Fax: 310-891-1111

Web: www.TRENDNET.com

Email: sales@trendware.com

TRENDnet
TRENDware, USA