



Quick Installation Guide



TE100-MP1U
TE100-MP2U
TEW-MP2U

Table of Contents

English	1
1. Before You Start	1
2. How to Connect	3
3. Configure the Print Server	4
4. Configure Wireless Settings (TEW-MP2U only)	6
5. Printing	8
6. Faxing	10
7. Scanning	11
8. Storage	12
Troubleshooting	14

1. Before You Start



Package Contents

- TE100-MP1U/TE100-MP2U/TEW-MP2U
- Quick Installation Guide
- Utility CD-ROM
- Power Adapter (12V, 1A)

System Requirements

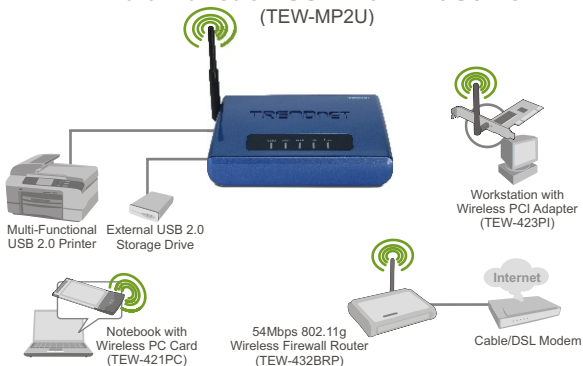
- CD-ROM Drive
- CPU: 300Mhz or above/ 800Mhz or above (Windows Vista)
- Memory: 256MB RAM or above/ 512MB RAM or above (Window Vista)
- Windows 2000/XP/2003 Server/Vista (32bit)

Note:

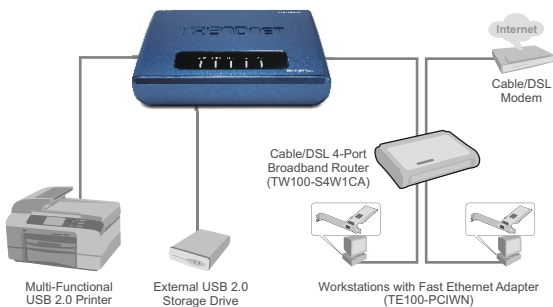
1. Do not install MFP Server Control Center, connect printer to print server and connect the computer to the print server until instructed to do so.
2. The MFP Server Control Center must be installed on each computer in order to use your multi-function printer.

Application

54Mbps 802.11g Wireless 2-Port Multi-Function USB 2.0 Print Server (TEW-MP2U)



1 or 2 Port 10/100Mbps Multi-Function USB 2.0 Print Server (TE100-MP1U/TE100-MP2U)

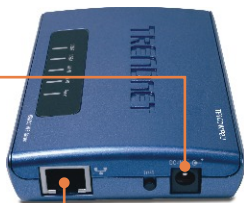


2. How to Connect

1. Install the printer drivers to your computer. Then shutdown the printer and disconnect the printer from your computer.

Note: Please refer to your printer's manual for printer installation instructions.

2. Connect the **Power Adapter** to the Print Server and then to a power outlet.



3. Connect a RJ-45 network cable from a Switch/Router to the **LAN** port of the Print Server.



4. Connect the USB Printer to the **USB** port of the Print Server.

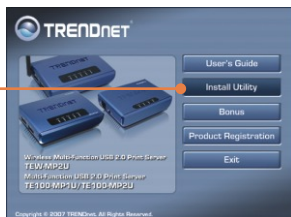
5. Power **ON** printer.

6. Verify the **Power, Link** and **USB1** or **USB2** LEDs are lit on the Print Server.



3. Configure the Print Server

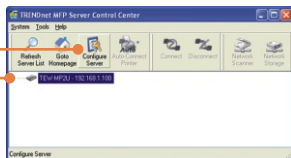
1. Insert the **Utility CD-ROM** into your computer's CD-ROM Drive and then click **Install Utility**.



2. Follow the **InstallShield Wizard** instructions. Then click **Finish**.



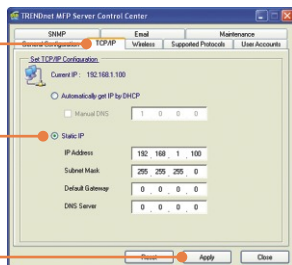
3. Click the **Print Server** and click **Configure Server**.



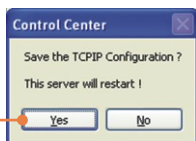
4. Enter the **User name** and **Password**, and then click **Login**.
User Name: **admin**
Password: **admin**



5. Click **TCP/IP**. Assign the Print Server a Static IP address and then click **Apply**.
Note: The IP Address must match the same network segment as your computer.



6. Click **Yes** to restart the Print Server.



7. Click **Close**.



Note: For the TEW-MP2U, proceed to section 5.

Print Server configuration is now complete.

For detailed information regarding the TE100-MP1U/TE100-MP2U configuration and advanced settings, please refer to the User's Guide on the Utility CD-ROM or TRENDnet's website at www.trendnet.com

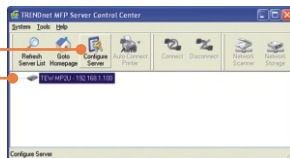
Register Your Product

To ensure the highest level of customer service and support, please take a moment to register your product Online at: www.TRENDnet.com/register

Thank you for choosing TRENDnet

4. Configure Wireless Settings (TEW-MP2U only)

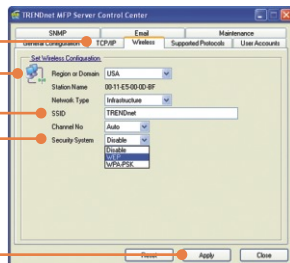
1. Click the Print Server and click **Configure Server**.



2. Enter the User name and Password, and then click **Login**.
User Name: **admin**
Password: **admin**



3. Click **Wireless**. Select your Region or Domain to meet your country's regulations. Enter the SSID of your wireless network. If encryption is enabled on your wireless network, select WEP or WPA-PSK and enter your encryption key. Then click **Apply**. If you do not know your encryption key, contact your network administrator or logon to your wireless router.



4. Click **Yes** to restart the Print Server.



5. Click **Close**.



6. Unplug the power to the Print Server, disconnect the Ethernet cable to the Print Server, wait 15 seconds, then plug power to the Print Server back in.

7. Verify the **WLAN** LED is lit on the Print Server.



Print Server wireless configuration is now complete.

For detailed information regarding the TEW-MP2U configuration and advanced settings, please refer to the User's Guide on the Utility CD-ROM or TRENDnet's website at www.trendnet.com

Register Your Product

To ensure the highest level of customer service and support, please take a moment to register your product Online at: www.TRENDnet.com/register
Thank you for choosing TRENDnet

5. Printing

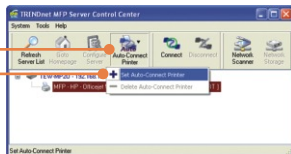
Note:

1. For LPR, IPP and Manual connect printing instructions, please refer to the User Guide. The User Guide is included on the Utility CD-ROM.
2. A computer using LPR or IPP printing and a computer using NetUSB printing can not print documents to the same printer simultaneously.

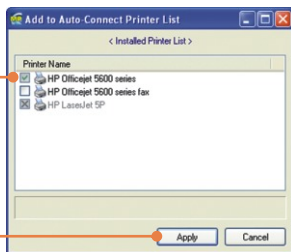
Setup for Auto Connect Printing

Note: Only one user can print at a time in Auto Connect mode. Once a user has finished printing, another user can print or scan to the printer.

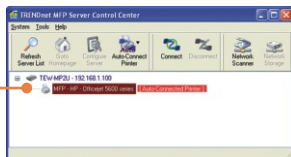
1. Select the printer. Click **AutoConnect Printer** and click **Set AutoConnect Printer**



2. Select the desired printer or fax and click **Apply**.



3. The USB MFP Server Control Center will now show the printer as an **AutoConnected Printer**.



4. User can now start printing.

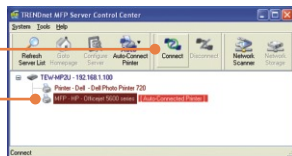
5. Select the printer. Then click **Disconnect.** (optional)



Note: For Auto Connect Printing, a user does not have to wait for the current owner to click disconnect. Follow step 1 to grab ownership of the Print Server.

6. Faxing

1. Select the printer. Then click **Connect**.



2. Open the document that you wish to fax and click **Print**.

3. Select your fax as the printer.

4. Your Multi-Function Printer's fax software will appear. Follow the fax software instructions for sending a fax.

5. Select the printer. Then click **Disconnect**.



7. Scanning

1. Select the printer. Click **Network Scanner**.

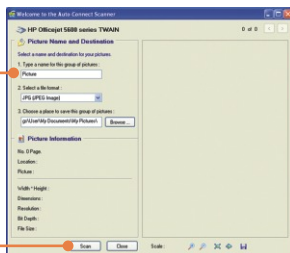


2. Select TWAIN or WIA format and click **OK**.

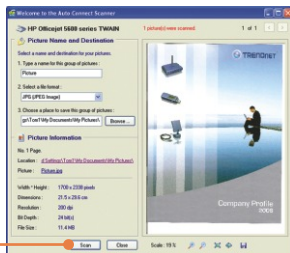


3. Place the document on the Multi-Function Printer's Scanner bed.

4. Type in a name, select image type and choose the desired path. Then click **Scan**.



5. The multi-function printer scanner software will appear. Follow the scanner software instructions.



6. Repeat steps 3, 4 and 5 to scan additional documents. Otherwise, click **Close**.

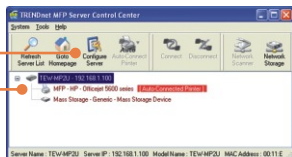
7. Select the printer. Then click **Disconnect**.



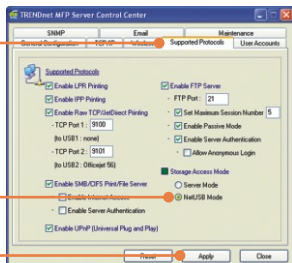
8. Storage

Selecting Mode

1. Select the Print Server and click **Configure Server**.



2. Click **Supported Protocols**, select **Server Mode** or **NetUSB Mode** and then click apply.

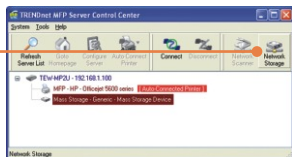


3. Click **Yes** to restart the Print Server.



Server Mode

1. Click **Network Storage**.



2. Right click the USB storage icon and select **Map Network Drive**.



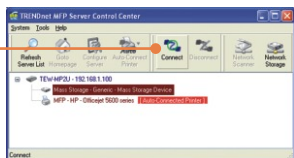
3. Select the desired drive letter and then click **Finish**.



NetUSB Mode

Note: Only one user can connect to the storage device at a time in NetUSB mode.

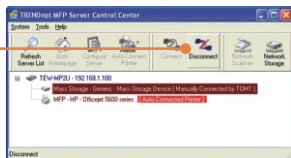
1. Click **Connect**.



2. Select **Open folder to view files using Windows Explorer** and then click **OK**.



3. Click **Disconnect** to disconnect from the storage device.



Q1. The Multi-Function Print (MFP) Server Control Center does not detect the Print Server and/or printer/storage device. What should I do?

A1. First, double check your hardware connections; make sure that the Print Server and printer are powered ON and are properly connected. Make sure the RJ-45 network cable is securely connected to the Print Server and Switch/Router. Second, disable any software firewall programs such as ZoneAlarm or Norton Internet Security. If your computer is running Windows XP or Vista, disable the built-in firewall. Third, click Refresh Server List. Fourth, go to System -> Exit in the USB MFP Server Control Center to close the program. Then open up the program. Fifth, power cycle the Print Server. Unplug the power to the Print Server, wait 15 seconds, then plug the print server back in.

Q2. The USB MFP Server Control Center does not detect my printer/storage device. What should I do?

A2. First, make sure the printer is powered on and properly connected to the Print Server. Second, connect the printer/storage device with another USB cable. Third, plug the printer/storage device into the other USB port (TE100-MP2U and TEW-MP2U only).

Q3. I can not set my printer or scanner as an auto-connect printer or network scanner. What should I do?

A3. First, verify that no other computer is using the printer or scanner. In the utility, if there is a computer name next to the printer name, another computer is using the printer or scanner. Once the user has finished printing or scanning, you will be able to print or scan. Second, the printer may have been previously set as a LPR printer. Go to **Control Panel -> Printers**. Right click on the printer and select properties. Click **Ports**, select a different port (e.g. Virtual Port for USB) and then click apply

Q4. I am unable to print to my print server. What should I do?

A4. First, make sure you follow the exact steps for installing the print server in section 2. If you installed the Print Server in a different sequence of steps, the setup will not work properly. In this case, uninstall the printer and the Printer Server utility. Turn off the printer and print server, disconnect the USB and network cable and go through the installation process again. Second, when the printer is set up as an Auto Connect printer, another user may be connected to the printer. You must wait until the other user has disconnected.

Q5. I can print a test page, but I cannot print anything from Microsoft Word or other applications.

A5. Make sure to set the newly installed network printer as your default printer. Click Start and then click Printers & Faxes, verify that your printer icon has a check on it.

Q6. I configured my print server to automatically receive an IP Address from a DHCP server, and now I cannot go into the print server's web utility.

A6. Open the USB MFP Server Control Center (See 3. Configure the Print Server) to locate your print server's IP Address.

Q7. What is the difference between Auto Connect Network & Manual Connect modes?

A7. If user A chooses auto connect (printing or scanning), other users can print or scan after User A has finished printing or scanning. Other users will be able to grab ownership of the printer. If user A chooses manual connect, other users cannot print or scan until User A has press disconnect in the MFP Server Control Center. Other users will not be able to grab ownership of the printer.

Q8. No window appears after I connect my computer to my storage device in NetUSB mode. What should I do?

A8. Double click on My Computer. A list of drives appears. Double click on the drive for your storage device.

Q9. Is there a way to force a computer to give up ownership of the printer/fax/scanner/ storage device?

A9. Open the USB MFP Server Control Center, click Configure Server, click Maintenance and then click Restart Server.

Q10. After I successfully configured the TEW-MP2U to match my wireless network settings, I can not print through the Print Server.

A10. First, verify that the wireless settings match your wireless network settings. Second, after configuring your wireless network settings, make sure to unplug the power to the Print Server, disconnect the Ethernet cable from the Print Server, wait 15 seconds, then plug the Print Server back in. Third, verify that the WLAN LED on the Print Server is lit.

If you still encounter problems or have any questions regarding the TE100-MP1U/ TE100-MP2U/TEW-MP2U, please refer to the User's Guide included on the Utility CD-ROM or contact TRENDnet's Technical Support Department.

Certifications

This equipment has been tested and found to comply with FCC and CE Rules. Operation is subject to the following two conditions:

- (1) This device may not cause harmful interference.
- (2) This device must accept any interference received. Including interference that may cause undesired operation.



Waste electrical and electronic products must not be disposed of with household waste. Please recycle where facilities exist. Check with you Local Authority or Retailer for recycling advice.



NOTE: THE MANUFACTURER IS NOT RESPONSIBLE FOR ANY RADIO OR TV INTERFERENCE CAUSED BY UNAUTHORIZED MODIFICATIONS TO THIS EQUIPMENT. SUCH MODIFICATIONS COULD VOID THE USER'S AUTHORITY TO OPERATE THE EQUIPMENT.

ADVERTENCIA

En todos nuestros equipos se mencionan claramente las características del adaptador de alimentación necesario para su funcionamiento. El uso de un adaptador distinto al mencionado puede producir daños físicos y/o daños al equipo conectado. El adaptador de alimentación debe operar con voltaje y frecuencia de la energía eléctrica domiciliar existente en el país o zona de instalación.



TRENDnet Technical Support

US • Canada

Toll Free Telephone: 1(866) 845-3673

24/7 Tech Support



Europe (Germany • France • Italy • Spain • Switzerland UK)

Toll Free Telephone: +00800 60 76 76 67

English/Espanol - 24/7

Francais/Deutsch - 11am-8pm, Monday - Friday MET

Worldwide

Telephone: +[31] (0) 20 504 05 35

English/Espanol - 24/7

Francais/Deutsch - 11am-8pm, Monday - Friday MET

Product Warranty Registration

Please take a moment to register your product online.

Go to TRENDnet's website at <http://www.trendnet.com>

TRENDnet[®]
20675 Manhattan Place
Torrance, CA 90501
USA