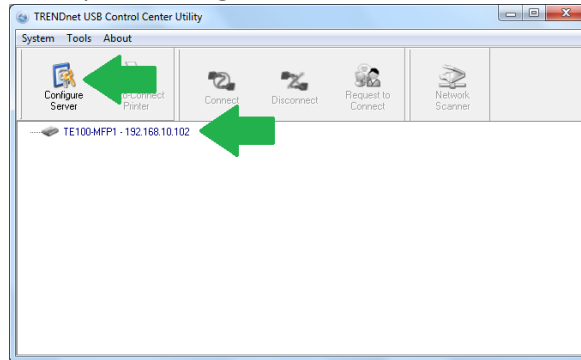
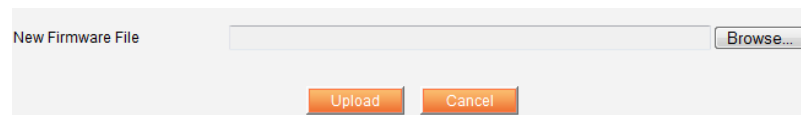


## **Firmware Upgrade Procedures**

1. Save the downloaded firmware file to your PC
2. Right click on the downloaded file and select **Extract All** or **Extract Here** option
  - a. Make sure to remember the location where the extracted file will be saved.
3. Double click on the **USB Control Center Utility** icon.
4. Select the TE100-MFP1 and press **Configure Server**.



5. The user interface of the TE100-MFP1 will open. Click on **Config**.
6. Enter the **User Name** and **Password** and then click Login. By default:  
**Administrator (User Name):** admin  
**Password:** admin
7. Select the Maintenance tab and click on **Firmware Upgrade**.
8. Click **Browse** and select firmware file (.bin) in the extracted file and then click **Upload** button to load



9. Wait until the firmware upload completed and the device reboot.
10. The firmware upgrade is completed.