



TRENDnet[®]



Quick Installation Guide



TBW-105UB

Table of Contents

English	1
1. Before You Start	1
2. How to Install	2
3. Configuring the Bluetooth Adapter	4
Troubleshooting	6

1. Before You Start



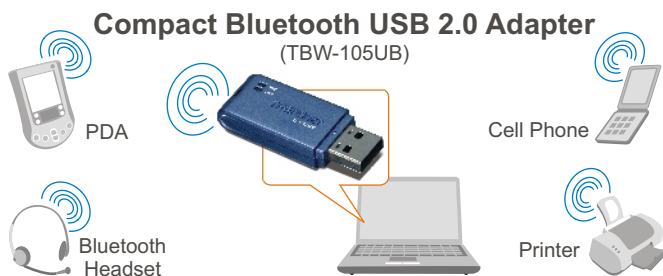
Package Content

- TBW-105UB
- Quick Installation Guide
- Utility & Driver CD-ROM

System Requirements

- CD-ROM drive
- Computer With An Available USB 1.1 or 2.0 Port
- CPU: Pentium 300MHz or Above
- Memory: 256 MB or Above
- Hard Drive Space: 50MB or Above
- Windows 2000/XP

Application



* Backwards compatible with USB 1.1 at 12Mbps

2. How to Install

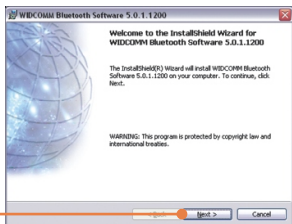
Note: Do not insert the TBW-105UB USB adapter until instructed to do so.

Note: For Windows 98SE and ME, refer to the User's Guide.

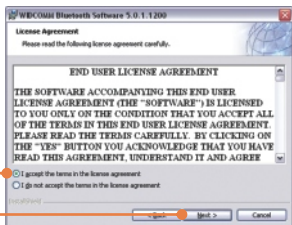
1. Insert the **Utility & Driver CD-ROM** into your CD-ROM drive and click **Install Utility**.



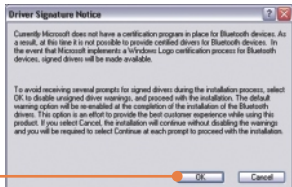
2. Click **Next**.



3. Select **I accept the terms in the license agreement**. Click **Next**



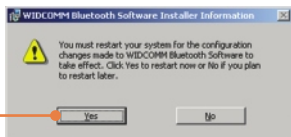
4. Click **OK**.



5. When you reach this screen, connect the TBW-105UB into the computer's USB port. Then click **OK**.



6. Click **Finish**.



7. Click **Yes** (Windows 2000 only).

Your installation is now complete.

For detailed information regarding the TBW-105UB configuration and advanced settings, please refer to the User's Guide included on the Utility & Driver CD-ROM or TRENDnet's website at www.trendnet.com

3. Configuring the Bluetooth Adapter

Note: Make sure your Bluetooth device is powered on and in pairing mode.

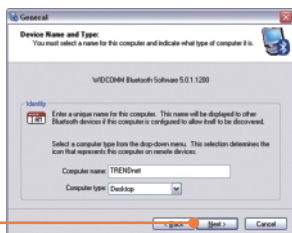
1. Double-click the Bluetooth icon on your system tray.



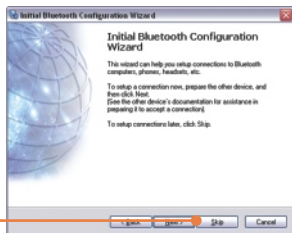
2. Click **Next**.



3. Click **Next**.



4. When you reach this screen, click **Skip**.

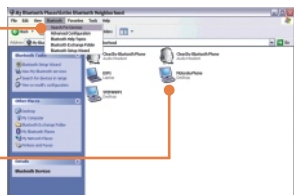


5. Click **Finish**.

6. Double-click the **My Bluetooth Places** icon.



7. Click **Bluetooth -> Search For Devices**.



8. Right click on your Bluetooth device and then click **Pair**.

9. Type in a **Bluetooth security code** (for example: 0000. Please consult your Bluetooth device's manual for more information) and then click **OK**. Then put in the same **Bluetooth security code** on your Bluetooth device.



10. Double left-click on your Bluetooth device to show the available services.



Your configuration is now complete.

For detailed information regarding the TBW-105UB configuration and advanced settings, please refer to the User's Guide included on the Utility & Driver CD-ROM or TRENDnet's website at www.trendnet.com

Q1: Windows is unable to recognize my hardware. What should I do?

A1: First, make sure your computer meets the minimum requirements as specified in Section 1 of this Quick Installation Guide. Second, you must install the Bluetooth utility BEFORE you physically install your Bluetooth Adapter. Third, plug the adapter into a different USB slot.

Q2: The Bluetooth software is unable to detect my Bluetooth-enabled device. What should I do?

A2: First, disable any software firewall programs such as ZoneAlarm or Norton Internet Security. If you have Windows XP installed on your computer, make sure to disable the built-in XP firewall. Second, make sure your Bluetooth device is powered on.

Q3: I cannot pair my Bluetooth device to the TBW-105UB USB Adapter. What should I do?

A3: First, make sure your Bluetooth device is powered on. Second, make sure that your Bluetooth device is in pairing mode. Third, make sure to put in the same **Security Code** on both devices.

Q4: I am not receiving 3Mbps data rate through the adapter. What should I do?

A4: In order to get the full data rate, your Bluetooth device must support Bluetooth v2.0 with Enhanced Data Rate (EDR)

If you still encounter problems or have any questions regarding the TBW-105UB, please refer to the User's Guide included on the Utility & Driver CD-ROM or contact TRENDnet's Technical Support Department.

Certifications

This equipment has been tested and found to comply with FCC and CE Rules.

Operation is subject to the following two conditions:

- (1) This device may not cause harmful interference.
- (2) This device must accept any interference received. Including interference that may cause undesired operation.



Waste electrical and electronic products must not be disposed of with household waste. Please recycle where facilities exist. Check with you Local Authority or Retailer for recycling advice.



NOTE: THE MANUFACTURER IS NOT RESPONSIBLE FOR ANY RADIO OR TV INTERFERENCE CAUSED BY UNAUTHORIZED MODIFICATIONS TO THIS EQUIPMENT. SUCH MODIFICATIONS COULD VOID THE USER'S AUTHORITY TO OPERATE THE EQUIPMENT.

ADVERTENCIA

En todos nuestros equipos se mencionan claramente las características del adaptador de alimentación necesario para su funcionamiento. El uso de un adaptador distinto al mencionado puede producir daños físicos y/o daños al equipo conectado. El adaptador de alimentación debe operar con voltaje y frecuencia de la energía eléctrica domiciliar existente en el país o zona de instalación.



TRENDnet Technical Support

US • Canada

Toll Free Telephone: 1(866) 845-3673

24/7 Tech Support



Europe (Germany • France • Italy • Spain • Switzerland • UK)

Toll Free Telephone: +00800 60 76 76 67

English/Espanol - 24/7

Francais/Deutsch - 11am-8pm, Monday - Friday MET

Worldwide

Telephone: +(31) (0) 20 504 05 35

English/Espanol - 24/7

Francais/Deutsch - 11am-8pm, Monday - Friday MET

Product Warranty Registration

Please take a moment to register your product online.

Go to TRENDnet's website at <http://www.trendnet.com>

TRENDnet

20675 Manhattan Place

Torrance, CA 90501

USA