



## Quick Installation Guide



**TBW-105UB**  
H/W: A1.0R

# Table of Contents

English .....	1
1. Before You Start .....	1
2. How to Install .....	2
3. Configuring the Bluetooth Adapter .....	5
Troubleshooting .....	9

# 1. Before You Start



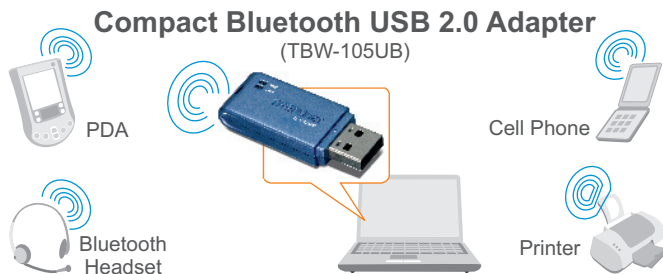
## Package Contents

- TBW-105UB
- Quick Installation Guide
- Utility & Driver CD-ROM

## System Requirements

- CD-ROM drive
- Computer With An Available USB 1.1 or 2.0 Port
- CPU: Pentium 300MHz or Above/ 800MHz or Above (Windows Vista)
- Memory: 256MB RAM or above / 512MB RAM or above (Windows Vista)
- Hard Drive Space: 50MB or Above
- Windows Vista/XP/2000/ME/98SE

## Application



\* Backwards compatible with USB 1.1 at 12Mbps

## 2. How to Install

Note: Do not insert the TBW-105UB USB adapter until instructed to do so.

1. Insert the **Utility & Driver CD-ROM** into your CD-ROM drive and click **Install Utility**.



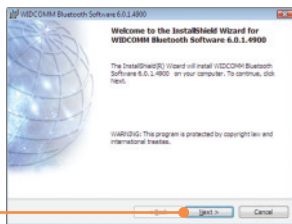
Note: For Windows XP/2000/ME/98SE proceed to step 7.

### Windows Vista

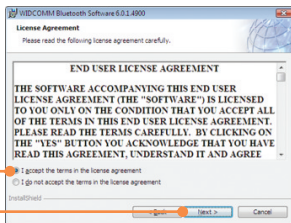
2. When you reach this screen, connect the TBW-105UB into the computer's USB port.



3. Click **Next**.



4. Select **I accept the terms in the license agreement.** Click **Next**

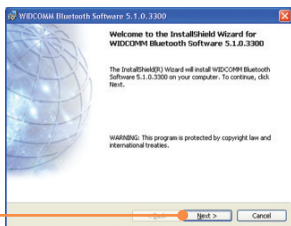


5. Click **Finish.**

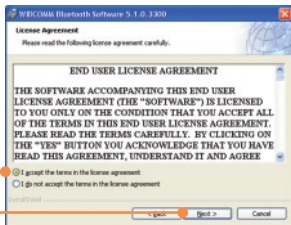
6. Proceed to **Section 3.**

## Windows XP/2000/ME/98SE

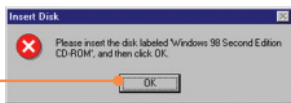
7. Click **Next.**



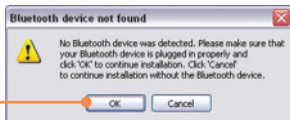
8. Select **I accept the terms in the license agreement.** Click **Next.**



9. Insert your Windows 98SE CD and then click **OK** (Windows 98SE only).

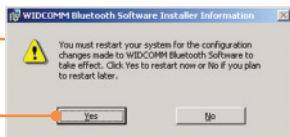


10. When you reach this screen, connect the TBW-105UB into the computer's USB port. Then click **OK**.



11. Click **Finish**.

12. Click **Yes** to restart the computer (Windows 2000, ME and 98SE only).



**Your installation is now complete.**

### Register Your Product

To ensure the highest level of customer service and support, please take a moment to register your product Online at: [www.trendnet.com/register](http://www.trendnet.com/register)  
Thank you for choosing TRENDnet

# 3. Configuring the Bluetooth Adapter

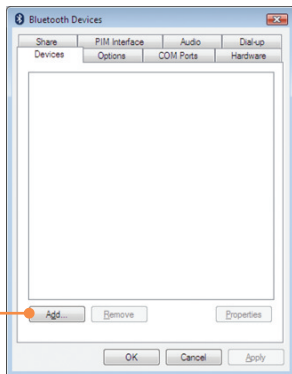
Note: Make sure your Bluetooth device is powered on and in pairing mode.

## Windows Vista

1. Double-click the Bluetooth icon in the system tray.



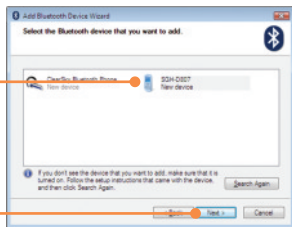
2. Click Add.



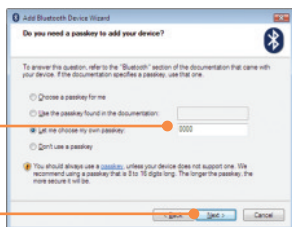
3. Click Next.



4. Select your Bluetooth device and then click **Next**.



5. Type in a **Bluetooth security code** (for example: 0000. Please consult your Bluetooth device's manual for more information) and then click **Next**. Then put in the same **Bluetooth security code** on your Bluetooth device.



6. Click **Finish**.

## Windows XP/2000/ME/98SE

1. The **Initial Bluetooth Configuration Wizard** may appear automatically. If the **Initial Bluetooth Configuration Wizard** does not appear automatically, double click on the Bluetooth icon in the system tray.

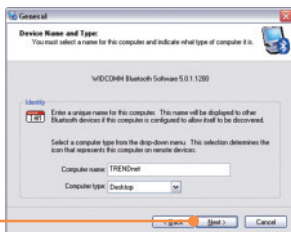




2. Click **Next**.



3. Click **Next**.



4. When you reach this screen, click **Skip**.

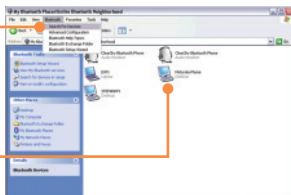


5. Click **Finish**.

6. **My Bluetooth Places** window may appear automatically. If the **My Bluetooth Places** window doesn't appear automatically, double-click the **My Bluetooth Places** icon.



7. Click **Bluetooth -> Search For Devices**.



8. Right click on your Bluetooth device and then click **Pair**.

9. Type in a **Bluetooth security code** (for example: 0000. Please consult your Bluetooth device's manual for more information) and then click **OK**. Then put in the same **Bluetooth security code** on your Bluetooth device.



10. Double left-click on your Bluetooth device to show the available services.



**Your configuration is now complete.**

For detailed information regarding the TBW-105UB configuration and advanced settings, please refer to the User's Guide included on the Utility & Driver CD-ROM or TRENDnet's website at [www.trendnet.com](http://www.trendnet.com)

**Q1: Windows is unable to recognize my hardware. What should I do?**

**A1:** First, make sure your computer meets the minimum requirements as specified in Section 1 of this Quick Installation Guide. Second, you must install the Bluetooth utility BEFORE you physically install your Bluetooth Adapter. Third, plug the adapter into a different USB slot.

**Q2: The Bluetooth software is unable to detect my Bluetooth-enabled device. What should I do?**

**A2:** First, disable any software firewall programs such as ZoneAlarm or Norton Internet Security. If you have Windows XP installed on your computer, make sure to disable the built-in XP firewall. Second, make sure your Bluetooth device is powered on.

**Q3: I cannot pair my Bluetooth device to the TBW-105UB USB Adapter. What should I do?**

**A3:** First, make sure your Bluetooth device is powered on. Second, make sure that your Bluetooth device is in pairing mode. Third, make sure to put in the same **Bluetooth Security Code** on both devices.

**Q4: I am not receiving 3Mbps data rate through the adapter. What should I do?**

**A4:** In order to get the full data rate, your Bluetooth device must support Bluetooth v2.0 with Enhanced Data Rate (EDR)

If you still encounter problems or have any questions regarding the TBW-105UB, please refer to the User's Guide included on the Utility & Driver CD-ROM or contact TRENDnet's Technical Support Department.

### Certifications

This equipment has been tested and found to comply with FCC and CE Rules.

Operation is subject to the following two conditions:

- (1) This device may not cause harmful interference.
- (2) This device must accept any interference received. Including interference that may cause undesired operation.



Este equipamento opera em caráter secundário, isto é, não tem direito a proteção contra interferência prejudicial, mesmo de estações do mesmo tipo, e não pode causar interferência a sistemas operando em caráter primário

Waste electrical and electronic products must not be disposed of with household waste. Please recycle where facilities exist. Check with your Local Authority or Retailer for recycling advice.



**NOTE:** THE MANUFACTURER IS NOT RESPONSIBLE FOR ANY RADIO OR TV INTERFERENCE CAUSED BY UNAUTHORIZED MODIFICATIONS TO THIS EQUIPMENT. SUCH MODIFICATIONS COULD VOID THE USER'S AUTHORITY TO OPERATE THE EQUIPMENT.

### ADVERTENCIA

En todos nuestros equipos se mencionan claramente las características del adaptador de alimentación necesario para su funcionamiento. El uso de un adaptador distinto al mencionado puede producir daños físicos y/o daños al equipo conectado. El adaptador de alimentación debe operar con voltaje y frecuencia de la energía eléctrica domiciliar existente en el país o zona de instalación.



**TRENDnet**<sup>®</sup>

## Product Warranty Registration

Please take a moment to register your product online.  
Go to TRENDnet's website at <http://www.trendnet.com/register>

**TRENDnet**<sup>®</sup>

20675 Manhattan Place  
Torrance, CA 90501  
USA