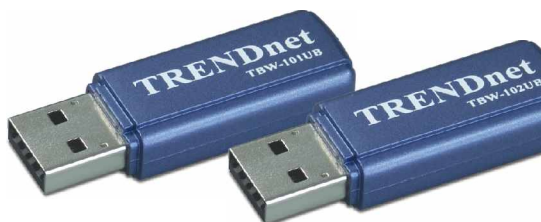


# TBW-101UB TBW-102UB

Guia Rápido de Instalação

Version 10.12.05



# Table of Contents

Português .....	1
1. Preparar para Instalação .....	1
2. Instalar Utilitário Bluetooth .....	2
3. Desabilitar Serviços Bluetooth para Windows XP SP2 .....	5
4. Instalação de Driver .....	7
5. Emparelhando Dispositivos Bluetooth .....	9
Troubleshooting .....	12

# Português QIG

## 1. Preparar para Instalação

### Verificar o Conteúdo da Embalagem

Favor verificar se todo o conteúdo está na caixa:



### Verificar Equipamento

Antes de instalar o adaptador Bluetooth você deve ter um computador de uso pessoal com:

- Windows 98SE, ME, 2000 ou XP instalado
- Uma porta USB 1.1 disponível
- Um Drive de CD-ROM

## 2. Instalar Utilitário Bluetooth

**Nota:** Você deve instalar o programa Utilitário Bluetooth antes de instalar o adaptador USB Bluetooth.

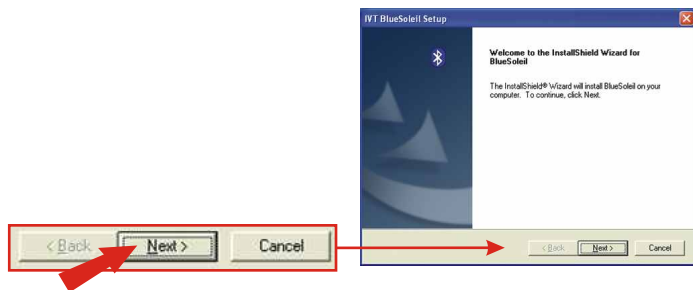
1. Ligue seu computador.
2. Insira o CD-ROM de Utilitário em seu drive de CD-ROM.



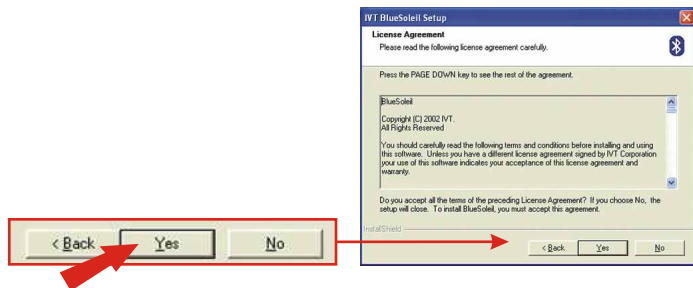
3. A função "Auto-Run" vai iniciar o assistente de instalação de software automaticamente. Se a função "Auto-Run" não iniciar automaticamente, favor procurar o arquivo "Setup.exe" no CD de instalação. Duplo-Clique em "Auto-Run.exe" para continuar.
4. Selecione a língua para a instalação e clique **OK**.



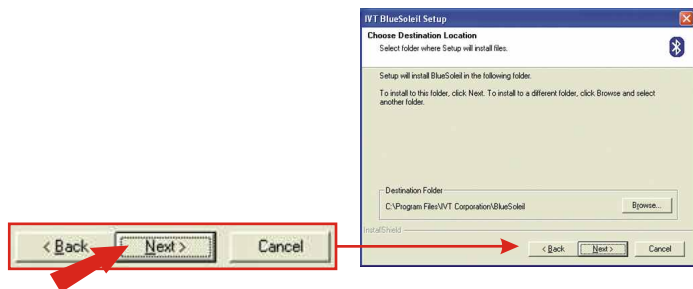
## 5. Clique Next.



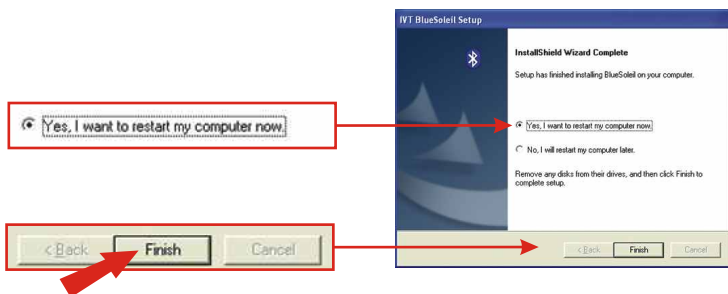
## 6. Clique Yes.



## 7. Clique Next.



8. Selecione **Yes, I want to restart my computer now** (Sim, eu quero reiniciar meu computador agora) e clique **Finish**.



9. Depois de reiniciar seu computador, insira o TBW-101UB/TBW-102UB em uma de suas portas USB.

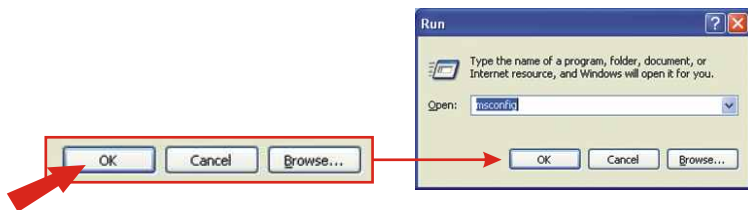


### 3. Desabilitar Serviços Bluetooth para Windows XP SP2

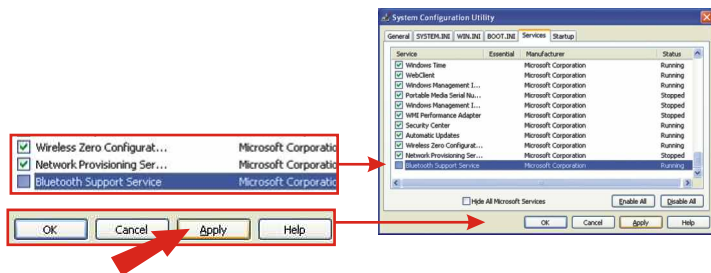
Para usuários Windows XP SP1/2000/ME/98SE, favor continuar para a seção 4. Instalação de Driver

#### Windows XP SP2

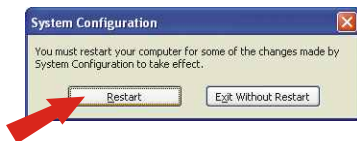
1. Clique **Start**, clique **Run**, digite msconfig e clique **OK**.



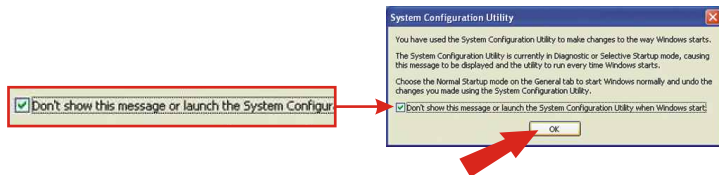
2. Clique na aba **Services** e desabilite **Bluetooth Support Service** por **Microsoft Corporation**. Clique **Apply** e clique **Close**.



### 3. Click **Restart**.



### 4. Depois de reiniciar seu computador o utilitário de Configuração do Sistema (System Configuration Utility) vai aparecer. Marque **Don't show this message** e clique **OK**.

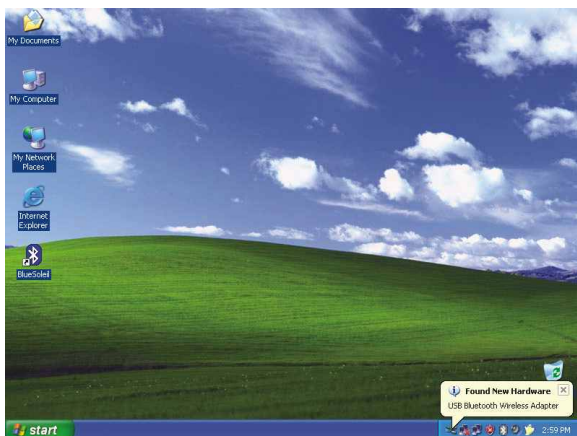




# 4. Instalação de Driver

## Windows XP

1. Depois de inserir o TBW-101UB/TBW-102UB em seu slot USB, o Windows vai automaticamente instalar seus drivers. Favor continuar para a seção 5. Emparelhando Dispositivos Bluetooth.

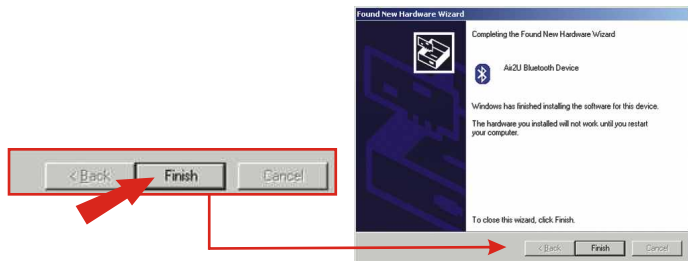


# Windows 2000/ME/98SE

## 1. Clique OK.



## 2. Clique Finish.



## 3. Clique Yes para reiniciar. Se você não receber esta mensagem, favor reiniciar seu computador manualmente.

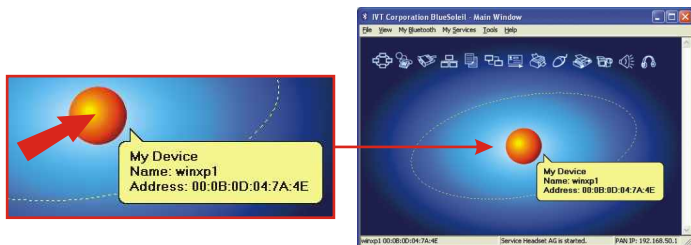


# 5. Emparelhando Dispositivos Bluetooth

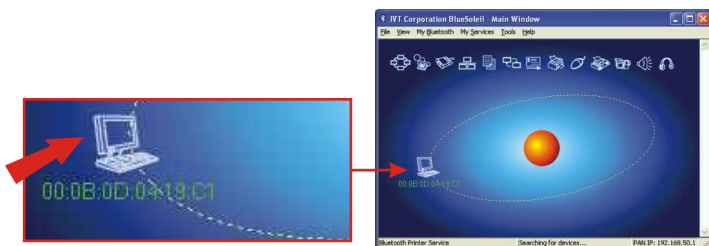
1. Duplo-Clique no ícone Bluetooth localizado no canto inferior direito.



2. Clique no globo laranja para procurar por dispositivos Bluetooth.



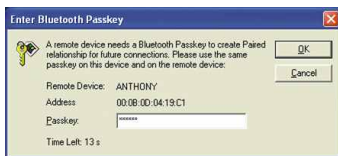
3. Duplo-Clique em dispositivo com Bluetooth.



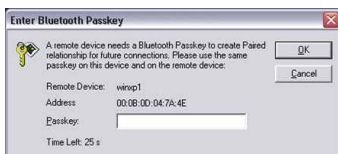
4. Todos os serviços Bluetooth disponíveis estão destacados em amarelo para sua conveniência. Duplo-Clique no serviço de Bluetooth que você quer habilitar. Neste exemplo, o “Serviço de Transferência de Arquivos Bluetooth” está selecionado.



5. O computador selecionado está pronto para uma senha. Essa senha pode ser qualquer coisa, de letras a números. Contudo, certifique-se de que ambos dispositivos Bluetooth compartilham a mesma senha. Neste exemplo, a senha é **123456**. Digite **123456** para os dois dispositivos.



Computer 1

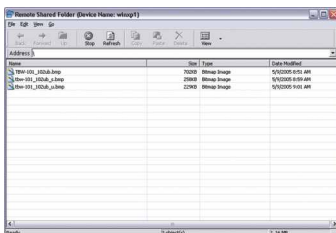


Computer 2

6. Clique **Yes** para ambos dispositivos.



7. Depois de emparelhar ambos computadores com Bluetooth, vai aparecer uma lista de arquivos compartilhados. Faça download de qualquer arquivo selecionado.



# Troubleshooting

**Q1: If the Device Status indicates that the Bluetooth USB Adapter is not working properly, what should I do?**

**A1:** Uninstall **Air2U Bluetooth Device** in **Device Manager**, and reinstall the Bluetooth utility.

**Q2: How do I set up connections between Bluetooth devices?**

**A2:** Refer to the User's Guide on the included CD-ROM or to TRENDnet's website for additional information.

**Q3: How do I transfer files between my PC and my Cell Phone?**

**A3:** You need to verify that your Cell Phone is "Bluetooth enhanced" and that the software for your phone allows file-transfers. If this is the case, refer to the User's Guide on the included CD-ROM or to TRENDnet's website for additional information.

**Q4: What folder do I use to share files between Bluetooth devices?**

**A4:** Double-click **My Documents**, double-click **Bluetooth**, and double-click **share**. All files located in the **share** folder can be transferred to other Bluetooth enabled devices.

**Q5: I clicked the orange globe in the Bluetooth utility, but I still could not locate a Bluetooth device.**

**A5:** Make sure that your Bluetooth devices are enabled, and that the TBW-101UB/TBW-102UB is connected to your computer. Then reboot all Bluetooth enabled devices and click the orange globe in the Bluetooth utility.

**Q6: I cannot pair two Bluetooth enabled computers after typing a password. What do I do?**

**A6:** Try using a simpler password with 3 characters such as 123, and see if you are able to connect to another Bluetooth enabled computer.

## Certifications

This equipment has been tested and found to comply with FCC and CE Rules. Operation is subject to the following two conditions:

- (1) This device may not cause harmful interference.
- (2) This device must accept any interference received.  
Including interference that may cause undesired operation.

**NOTE:** THE MANUFACTURER IS NOT RESPONSIBLE FOR ANY RADIO OR TV INTERFERENCE CAUSED BY UNAUTHORIZED MODIFICATIONS TO THIS EQUIPMENT. SUCH MODIFICATIONS COULD VOID THE USER'S AUTHORITY TO OPERATE THE EQUIPMENT.





# TRENDnet

## Product Warranty Registration

Please take a moment to register your product online.  
Go to TRENDnet's website at <http://www.TRENDNET.com>

### TRENDnet Technical Support

#### US/Canada Support Center

**Contact**

**Telephone:** 1(888) 777-1550

**Fax:** 1(310) 626-6267

**Email:** [support@trendnet.com](mailto:support@trendnet.com)

**Tech Support Hours**

7:30am - 6:00pm Pacific Standard Time  
Monday - Friday

#### European Support Center

**Contact****Telephone**

Deutsch : +49 (0) 6331 / 268-460

Français : +49 (0) 6331 / 268-461

0800-907-161 (numéro vert)

Español : +49 (0) 6331 / 268-462

English : +49 (0) 6331 / 268-463

Italiano : +49 (0) 6331 / 268-464

Dutch : +49 (0) 6331 / 268-465

Eesti : +372-6593613 (9.00AM to 5:00PM)

**Fax:** +49 (0) 6331 / 268-466

**Tech Support Hours**

8:00am - 6:00pm Middle European Time  
Monday - Friday

**TRENDnet**

3135 Kashiwa Street. Torrance, CA 90505

<http://www.TRENDNET.com>