

# TBW-101UB TBW-102UB

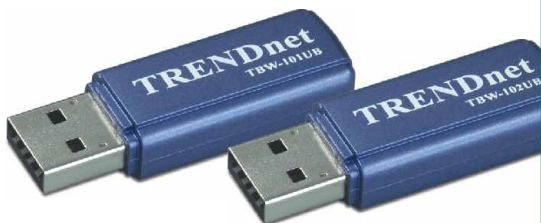
Bluetooth USB Adapter Quick Installation Guide

Guide d'installation rapide de l'adaptateur USB Bluetooth

Bluetooth USB-Adapter Kurzanleitung zur Installation

Guía de Instalación Rápida del Adaptador USB Bluetooth

Version 5.31.05



**TRENDnet**<sup>®</sup>  
TRENDware, USA  
**What's Next in Networking**

# Table of Contents

English .....	1
1. Prepare for Installation .....	1
2. Install Bluetooth Utility .....	2
3. Disabling Bluetooth Services for Windows XP SP2 .....	5
4. Driver Installation .....	7
5. Pairing Bluetooth Devices .....	9
Troubleshooting .....	12

# English QIG

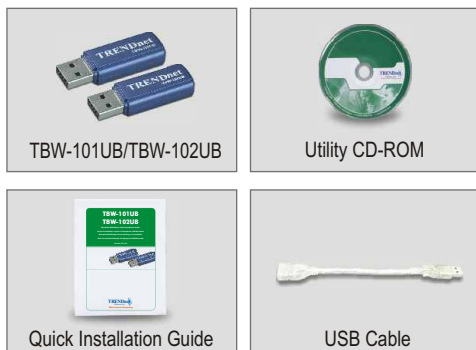
## 1. Prepare for Installation

Thank you for purchasing the TBW-101UB Bluetooth USB Adapter / TBW-102UB High-Power Bluetooth USB Adapter. This adapter will allow you to share files, resources, and an internet connection between multiple Bluetooth-enabled devices.

Following the installation instructions should be quick and easy. If you run into problems, please refer to the Troubleshooting section or User's Guide on the CD-ROM. If you need further technical support, please visit [www.trendnet.com](http://www.trendnet.com) or call us by phone.

### Verify Package Contents

Please check to make sure you have everything in the box:



### Verify Equipment

Before installing the Bluetooth adapter, you should have a personal computer with:

- Windows 98SE, ME, 2000 or XP installed
- One USB 1.1 port available
- A CD-ROM Drive

## 2. Install Bluetooth Utility

**NOTE:** You must install the Bluetooth Utility program before you install the Bluetooth USB Adapter.

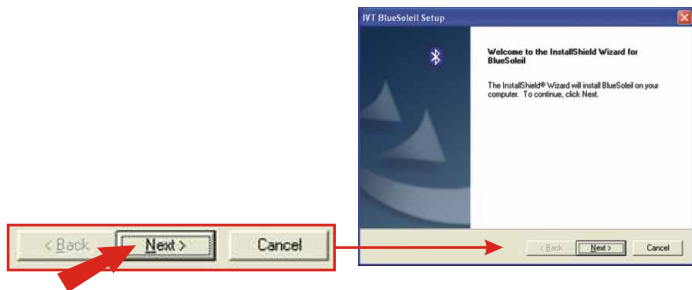
1. Turn on your computer.
2. Insert the Utility CD-ROM into your CD-ROM Drive.



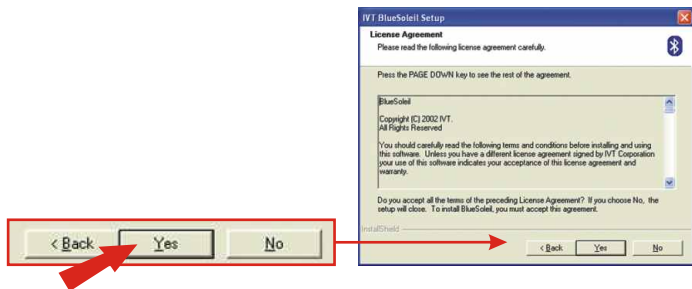
3. The Auto-Run function will automatically start the software installation wizard. If the Auto-Run function does not start automatically, please browse the installation CD to find the "Setup.exe" file. Double-click Auto-Run.exe to continue.
4. Select the language for this installation and click **OK**.



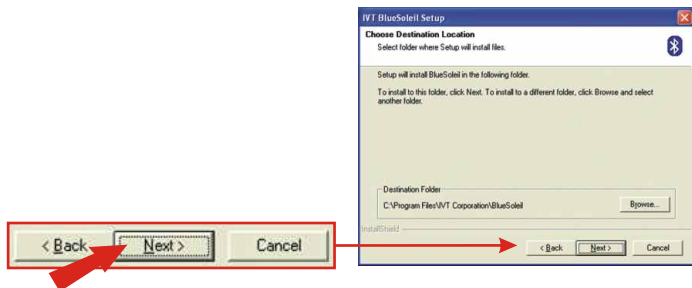
## 5. Click Next.



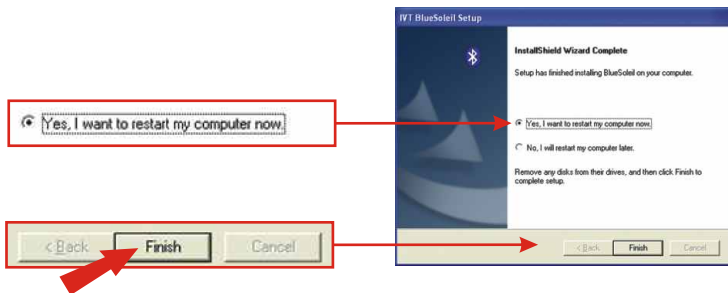
## 6. Click Yes.



## 7. Click Next.



8. Select **Yes, I want to restart my computer now** and click **Finish**.



9. After restarting your computer, insert the TBW-101UB/TBW-102UB into one of your USB ports.

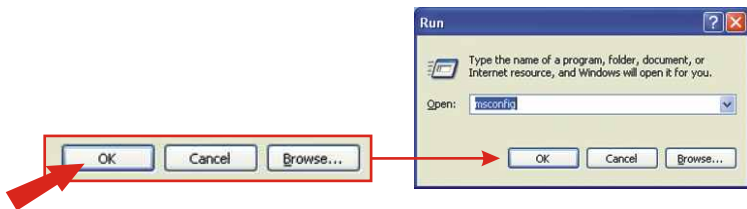


# 3. Disabling Bluetooth Services for Windows XP SP2

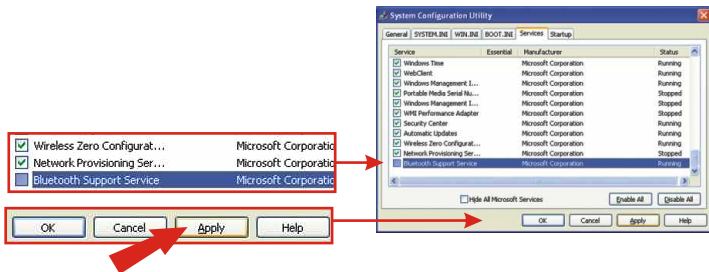
For Windows XP SP1/2000/ME/98SE users, please continue to section 4. **Driver Installation**

## Windows XP SP2

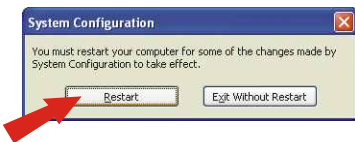
1. Click **Start**, click **Run**, type in **msconfig** and click **OK**.



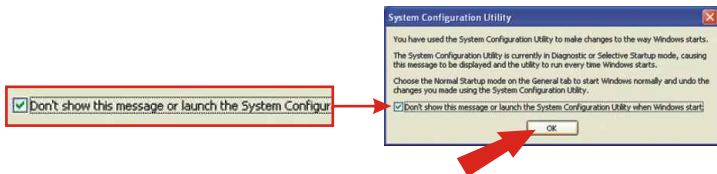
2. Click the **Services** tab and uncheck **Bluetooth Support Service** by **Microsoft Corporation**. Click **Apply** and click **Close**.



### 3. Click **Restart**.



### 4. After restarting your computer, the System Configuration Utility will appear. Check **Don't show this message** and click **OK**.

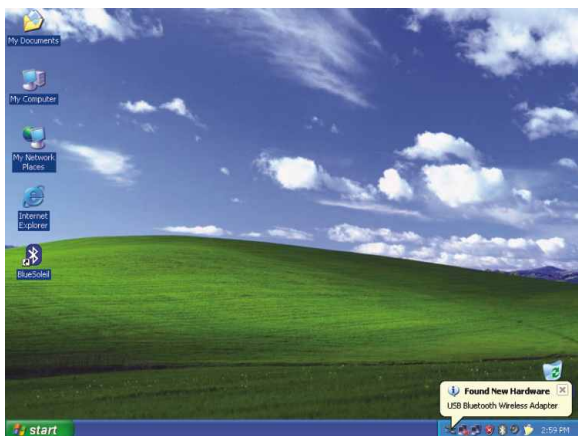




# 4. Driver Installation

## Windows XP

1. After inserting the TBW-101UB/TBW-102UB into your USB slot, Windows will automatically install your drivers. Please continue to section **5. Pairing Bluetooth Devices**.

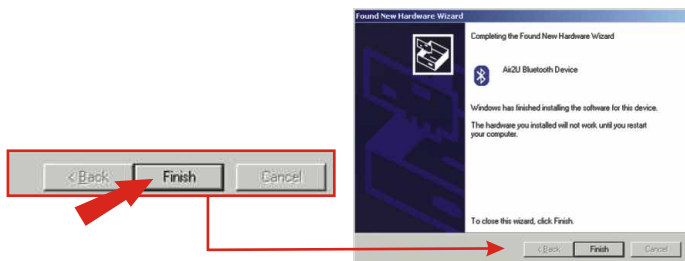


# Windows 2000/ME/98SE

1. Click **OK**.



2. Click **Finish**.



3. Click **Yes** to restart. If you do not get this message, please restart your computer manually.

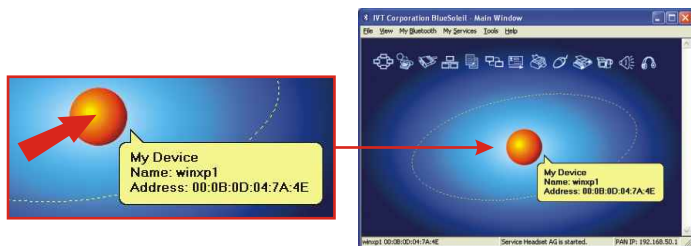


# 5. Pairing Bluetooth Devices

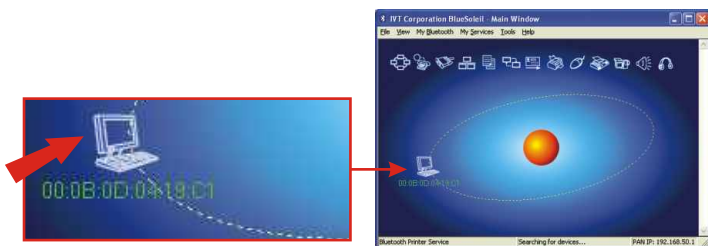
1. Double-click the Bluetooth icon located at the bottom right-hand corner.



2. Click the orange globe to search for Bluetooth devices.



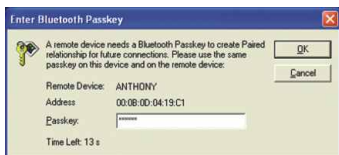
3. Double-click the Bluetooth enabled device.



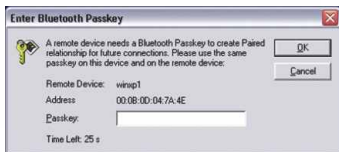
4. All available Bluetooth services are highlighted in yellow for your convenience. Double-click the Bluetooth service you want to enable. In this example, Bluetooth File Transfer Service is selected.



5. The selected computer will be prompted for a password. This password can be anything from letters to numbers. However, make sure that both Bluetooth devices share the same password. In this example, the password is 123456. Type 123456 for both devices.



← Computer 1

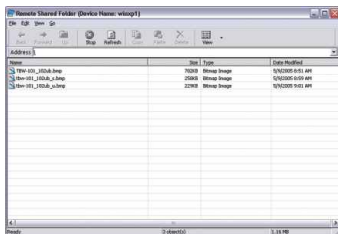


← Computer 2

6. Click **Yes** for both devices.



7. After pairing both Bluetooth enabled computers, a list of shared files will appear. Download any selected file.



# Troubleshooting

**Q1: If the Device Status indicates that the Bluetooth USB Adapter is not working properly, what should I do?**

**A1:** Uninstall **Air2U Bluetooth Device** in **Device Manager**, and reinstall the Bluetooth utility.

**Q2: How do I set up connections between Bluetooth devices?**

**A2:** Refer to the User's Guide on the included CD-ROM or to TRENDnet's website for additional information.

**Q3: How do I transfer files between my PC and my Cell Phone?**

**A3:** You need to verify that your Cell Phone is "Bluetooth enhanced" and that the software for your phone allows file-transfers. If this is the case, refer to the User's Guide on the included CD-ROM or to TRENDnet's website for additional information.

**Q4: What folder do I use to share files between Bluetooth devices?**

**A4:** Double-click **My Documents**, double-click **Bluetooth**, and double-click **share**. All files located in the **share** folder can be transferred to other Bluetooth enabled devices.

**Q5: I clicked the orange globe in the Bluetooth utility, but I still could not locate a Bluetooth device.**

**A5:** Make sure that your Bluetooth devices are enabled, and that the TBW-101UB/TBW-102UB is connected to your computer. Then reboot all Bluetooth enabled devices and click the orange globe in the Bluetooth utility.

**Q6: I cannot pair two Bluetooth enabled computers after typing a password. What do I do?**

**A6:** Try using a simpler password with 3 characters such as 123, and see if you are able to connect to another Bluetooth enabled computer.

## Certifications

This equipment has been tested and found to comply with FCC and CE Rules. Operation is subject to the following two conditions:

- (1) This device may not cause harmful interference.
- (2) This device must accept any interference received.  
Including interference that may cause undesired operation.





**What's Next in Networking**

## Product Warranty Registration

Please take a moment to register your product online.  
Go to TRENDware's website at <http://www.TRENDNET.com>

## TRENDnet Technical Support

### US/Canada Support Center

**Contact**

**Telephone:** 1(310) 626-6252

**Fax:** 1(310) 626-6267

**Email:** [support@trendnet.com](mailto:support@trendnet.com)

**Tech Support Hours**

7:30am - 6:00pm Pacific Standard Time

Monday - Friday

### European Support Center

**Contact****Telephone**

Deutsch : +49 (0) 6331 / 268-460

Français : +49 (0) 6331 / 268-461

Español : +49 (0) 6331 / 268-462

English : +49 (0) 6331 / 268-463

Italiano : +49 (0) 6331 / 268-464

Dutch : +49 (0) 6331 / 268-465

**Fax:** +49 (0) 6331 / 268-466

**Tech Support Hours**

8:00am - 6:00pm Middle European Time

Monday - Friday

**TRENDware International, Inc.**  
3135 Kashiwa Street. Torrance, CA 90505  
<http://www.TRENDNET.com>