

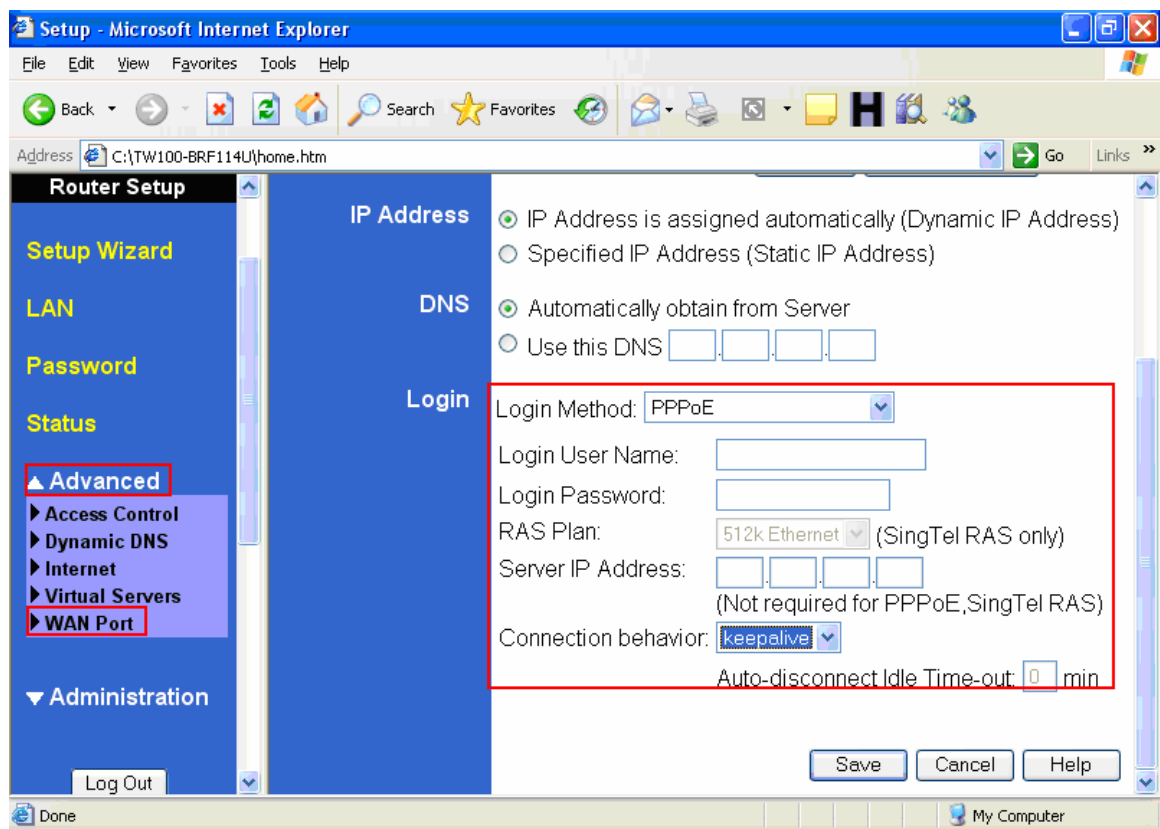
## F.A.Q for TW100-BRF114U

### **Q: How do I configure the TW100-BRF114U for a DSL, PPPoE connection?**

A: Open your web browser and type the IP address of the TW100-BRF114U in the address bar. The default IP address is 192.168.0.1. At the login, enter your username (blank) and password (blank). **NOTE: If the Setup Wizard starts, click on Cancel.**

Click on **Advanced** then **WAN Port** on the left hand side.

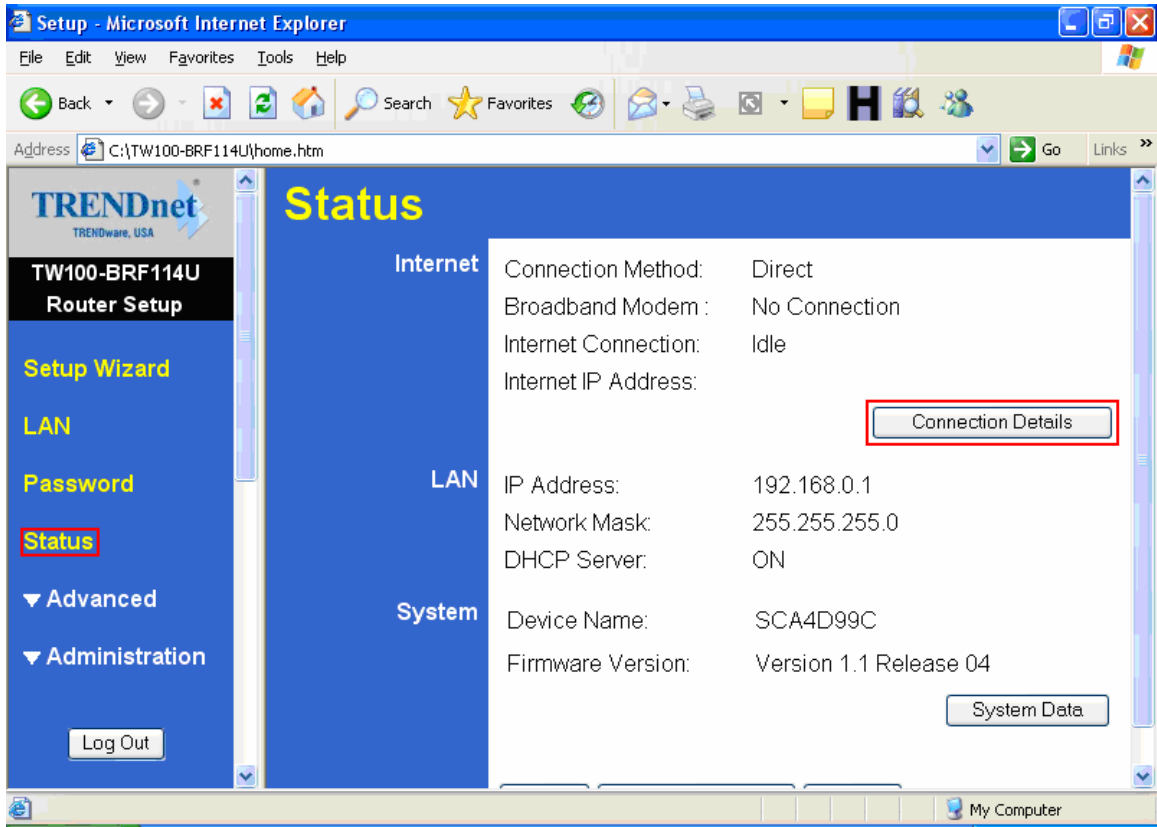
- 1) Choose **PPPoE** for the **Login Method** in the **Login** section.
- 2) Enter your **Username** and **Password** provided by your ISP (Internet Service Provider).
- 3) Click on the down arrow for the **Connection behavior** and select **“keepalive”**.
- 4) Click **Save**.



**Note: After you save the settings you may need to power cycle the modem and router.**

- 1) Disconnect the power cycle from the modem and router.
- 2) Wait approximately 15 seconds.
- 3) Reconnect the modem first and wait for it to boot up.
- 4) After the modem has booted up reconnect the router.

- 5) Open your web browser and type the IP address of the TW100-BRF114U in the address bar. The default IP address is 192.168.0.1. At the login, enter your username (blank) and password (blank). **NOTE: If the Setup Wizard starts, click on Cancel.**
- 6) Go to **Status** on the left hand side of the screen and then click on **Connection Details**. This will open a new window.



Setup - Microsoft Internet Explorer

File Edit View Favorites Tools Help

Back Forward Stop Home Search Favorites Refresh Print Mail Stop H

Address C:\TW100-BRF114U\home.htm Go Links

**TRENDnet**  
TRENDware, USA

**TW100-BRF114U**  
Router Setup

Setup Wizard

LAN

Password

**Status**

Advanced

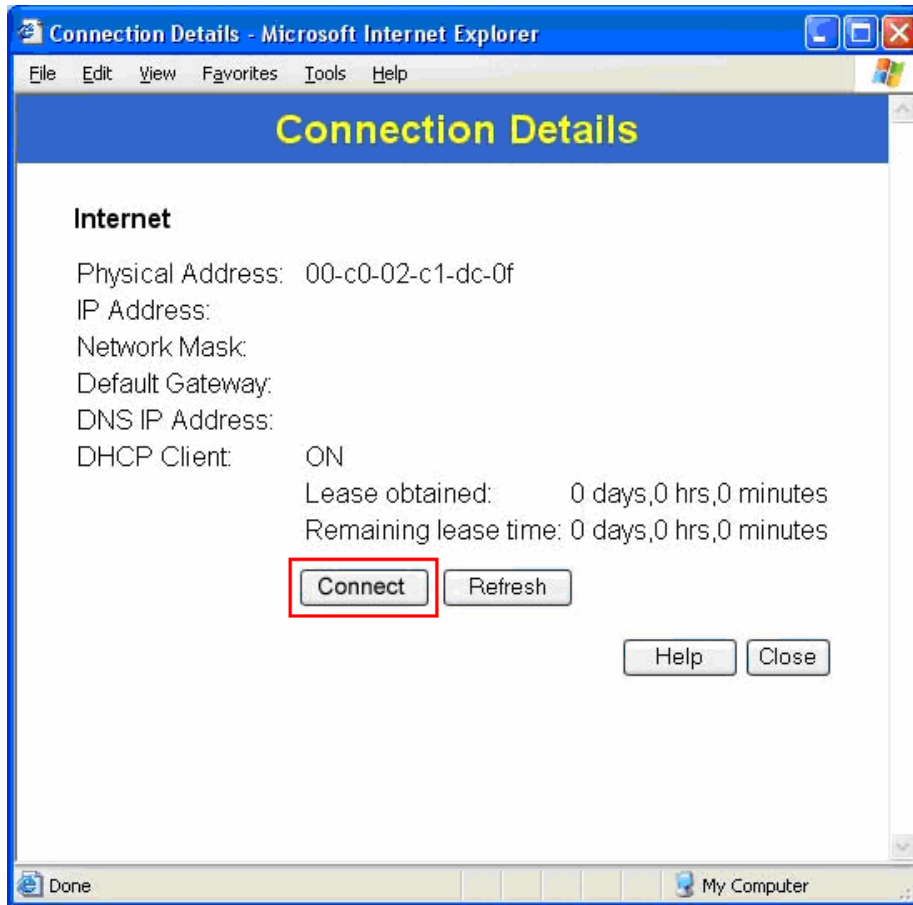
Administration

Log Out

## Status

<b>Internet</b>	Connection Method:	Direct
	Broadband Modem :	No Connection
	Internet Connection:	Idle
	Internet IP Address:	
		<a href="#">Connection Details</a>
<b>LAN</b>	IP Address:	192.168.0.1
	Network Mask:	255.255.255.0
	DHCP Server:	ON
<b>System</b>	Device Name:	SCA4D99C
	Firmware Version:	Version 1.1 Release 04
		<a href="#">System Data</a>

My Computer

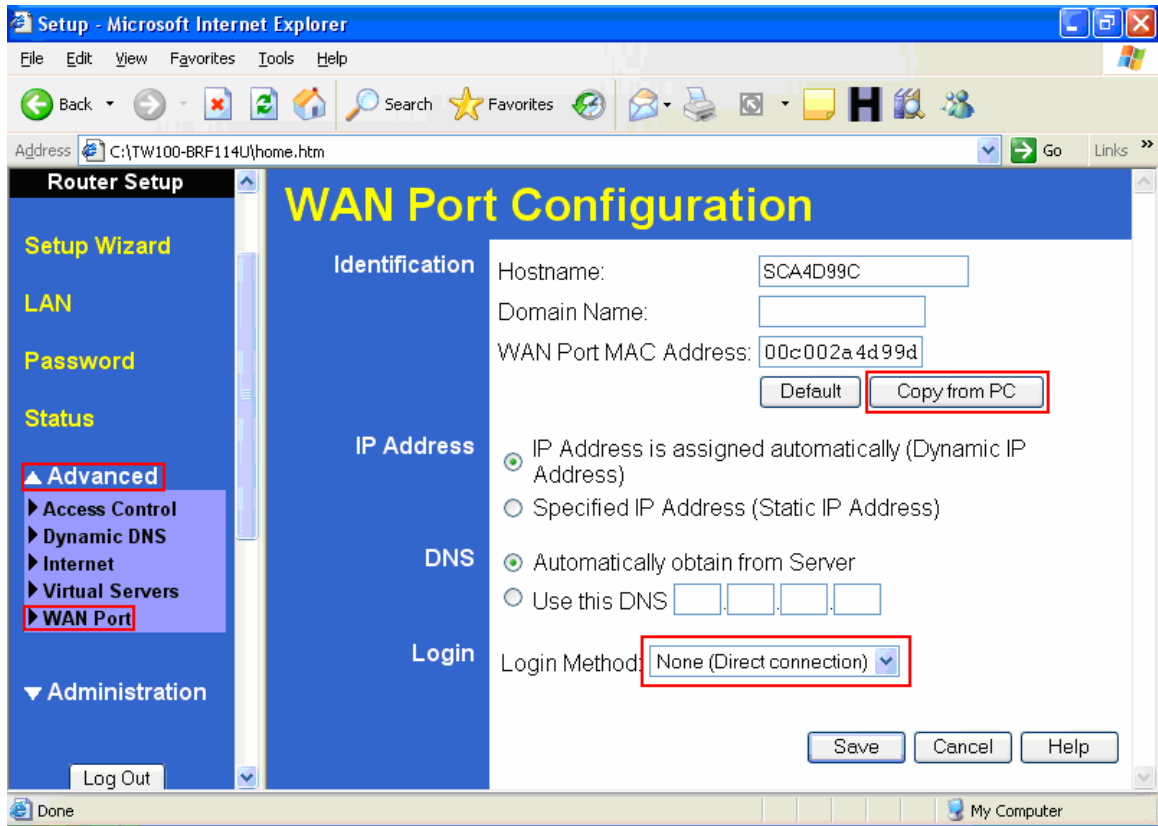


7) Click on **Connect**, wait a few seconds and see if it gets an IP address from your ISP.

**Q: How do I configure the TW100-BRF114U for a Cable connection using a Dynamic IP Address?**

**A: Note: The default setting of the router is configured for a Cable connection using a Dynamic IP Address.**

- 1) Open your web browser and type the IP address of the TW100-BRF114U in the address bar. The default IP address is 192.168.0.1. At the login, enter your username (blank) and password (blank). **NOTE: If the Setup Wizard starts, click on Cancel.**
- 2) Click on **Advanced** then **WAN Port** on the left hand side
- 3) If your ISP has registered the MAC address of your computer that you are managing the router from click on **Copy From PC** under the **WAN PORT MAC Address** field. This will copy your computers MAC address to the router. If you are not managing the computer from the computer with the registered MAC address make sure you enter the registered MAC address manually.
- 4) Choose **None (Direct Connection)** in the **Login Method** field in the **Login** section.
- 5) Click **Save**.



**Note: After you save the settings you may need to power cycle the modem and router.**


- 1) Disconnect the power cycle from the modem and router.
- 2) Wait approximately 15 seconds.
- 3) Reconnect the modem first and wait for it to boot up.
- 4) After the modem has booted up reconnect the router. Open your web browser and type the IP address of the TW100-BRF114U in the address bar. The default IP address is 192.168.0.1. At the login, enter your username (blank) and password (blank). **NOTE: If the Setup Wizard starts, click on Cancel.**
- 5) Go to Status on the left hand side of the screen and then click on Connection Details. This will open a new window.

Setup - Microsoft Internet Explorer

File Edit View Favorites Tools Help

Back Forward Stop Home Search Favorites Refresh Print Mail Stop H

Address <C:\TW100-BRF114U\home.htm> Go Links



**TW100-BRF114U**  
Router Setup

Setup Wizard

LAN

Password

**Status**

Advanced

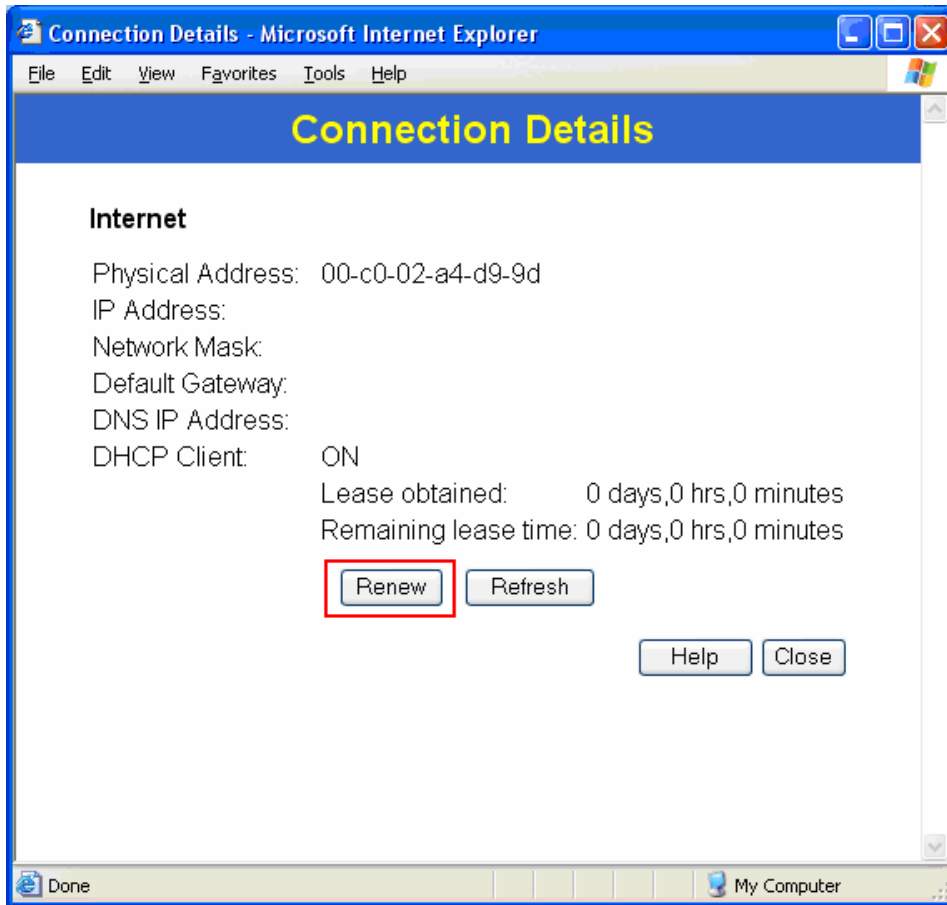
Administration

Log Out

## Status

<b>Internet</b>	Connection Method:	Direct
	Broadband Modem :	No Connection
	Internet Connection:	Idle
	Internet IP Address:	
		<a href="#">Connection Details</a>
<b>LAN</b>	IP Address:	192.168.0.1
	Network Mask:	255.255.255.0
	DHCP Server:	ON
<b>System</b>	Device Name:	SCA4D99C
	Firmware Version:	Version 1.1 Release 04
		<a href="#">System Data</a>

My Computer

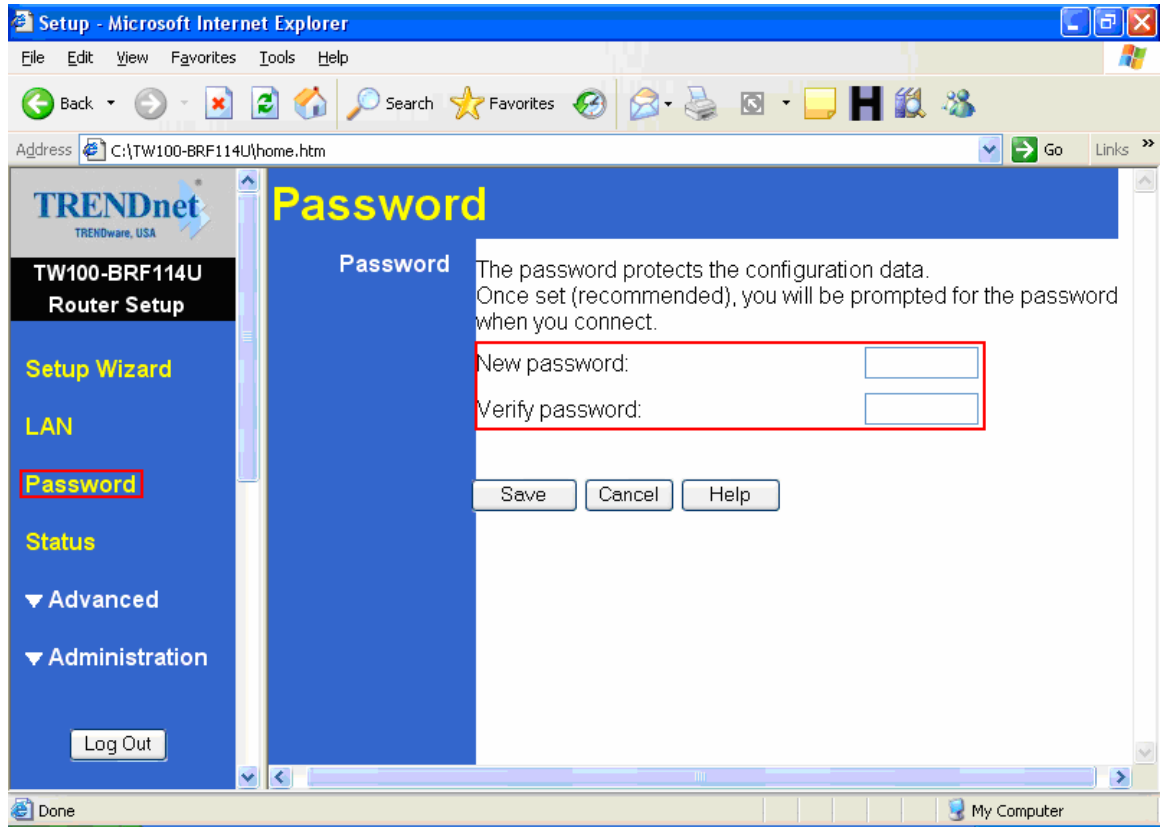


7) Click on **Renew**, wait a few seconds and see if it gets an IP address from your ISP.

**Q: How do I change the username & password on my TW100-BRF114U?**

A: Open your web browser and type the IP address of the TW100-BRF114U in the address bar. The default IP address is 192.168.0.1. At the login, enter your username (blank) and password (blank). **NOTE: If the Setup Wizard starts, click on Cancel.**

1) Click on **Password** on the left hand side.



- 2) Enter in the desired username and password.
- 3) Click **Save**.

**Q: What can I do if I forgot my password or want to reset back to factory defaults?**

- 1) Locate the reset button on the back of the TW100-BRF114U.
- 2) Press and hold in the reset button for approximately 15 seconds. This will reset the unit back to its default configuration.

**Q: What is the default IP address of my TW100-BRF114U?**

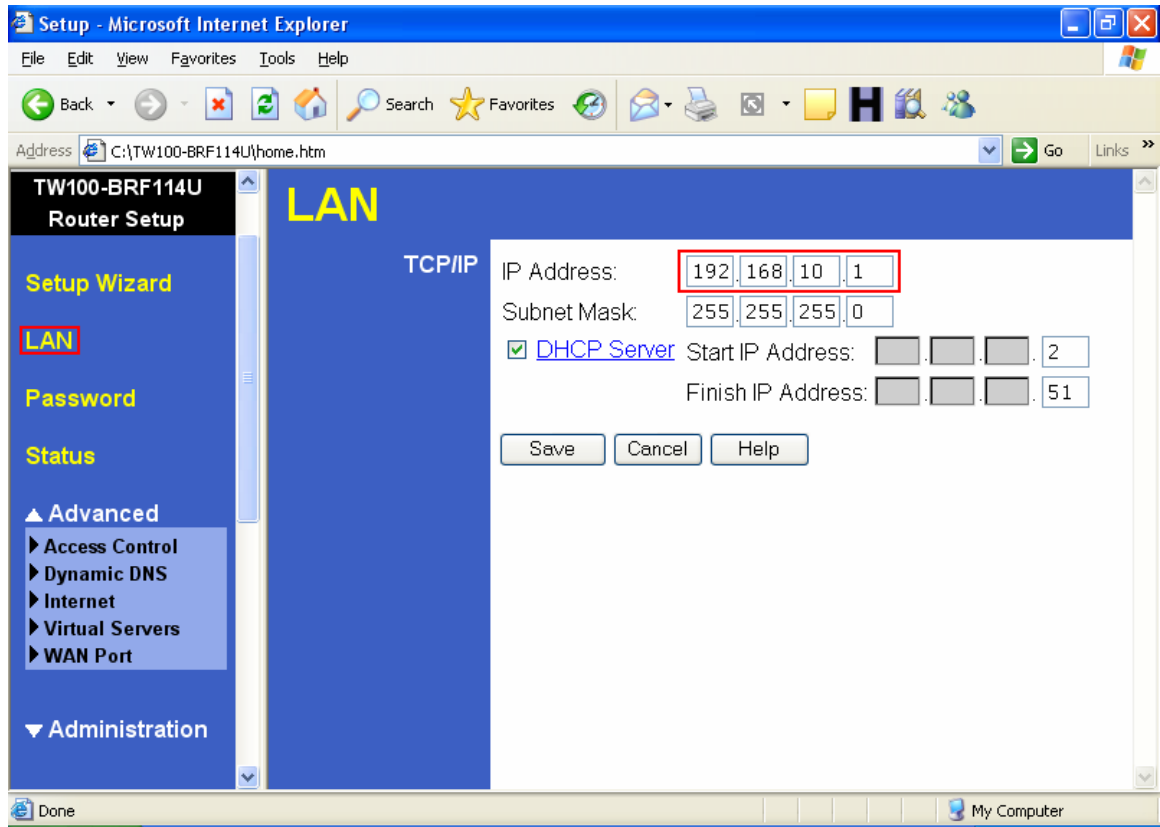
A: The default IP address for the TW100-BRF114U is 192.168.0.1.

**Q: What is the default username and password for the TW100-BRF114U?**

A: The default username & password for the TW100-BRF114U are both (blank). There is no username and password set by default.

**Q: How do I change the IP Address of my TW100-BRF114U?**

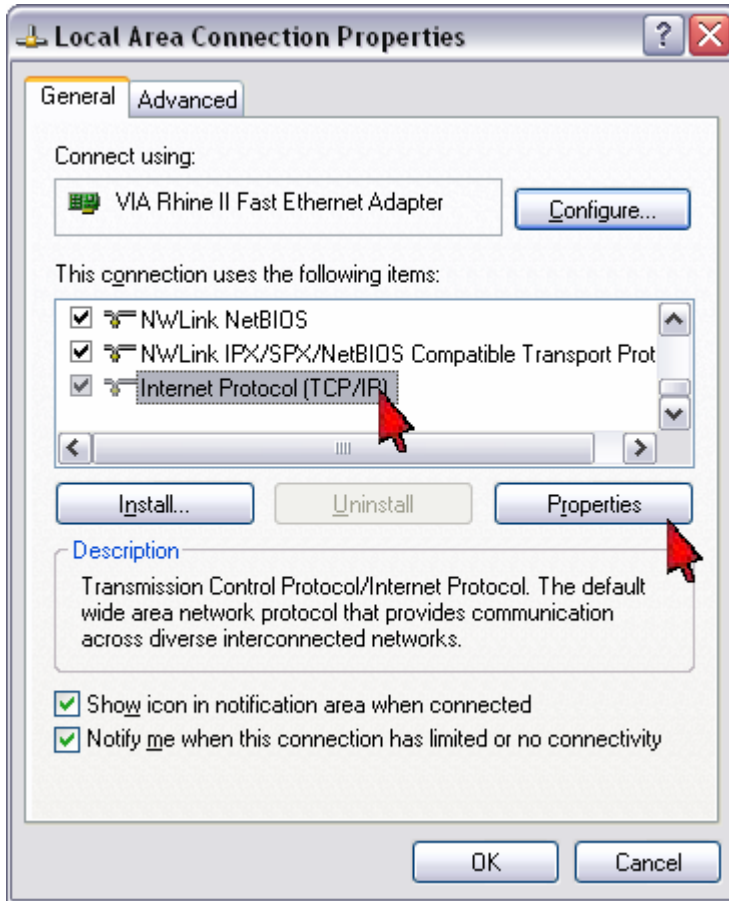
- 1) Open your web browser and type the IP address of the TW100-BRF114U in the address bar. The default IP address is 192.168.0.1. At the login, enter your username (blank) and password (blank). **NOTE: If the Setup Wizard starts, click on Cancel.**
- 2) Click on **LAN** on the left hand side.
- 3) Change the IP address in the IP Address field.
- 4) Click **Save**.

**Q: How do I configure the TW100-BRF114U?**

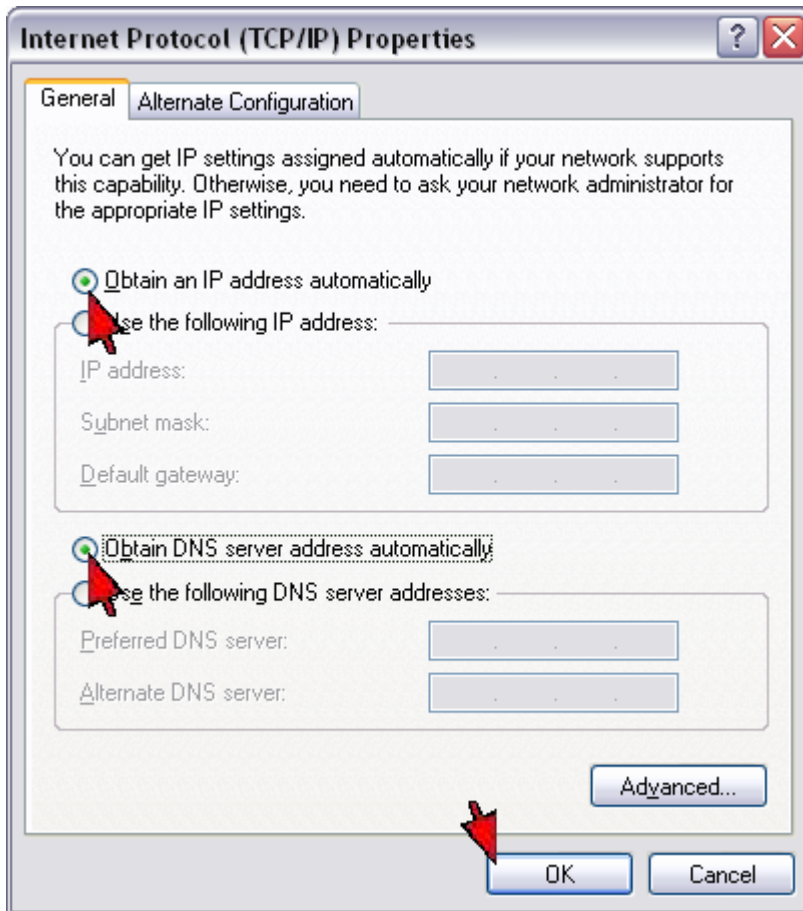
A: Click **Start** then click on the **Control Panel**. For Windows 2000 click on **Start**, highlight settings then click on the **Control Panel**.

- 1) Double-Click on the **Network Connection** icon.
- 2) Right-Click on the **Local Area Connection** icon then click on **Properties**.
- 3) Highlight the **Internet Protocol (TCP/IP)** by single clicking on it then click on **Properties**.

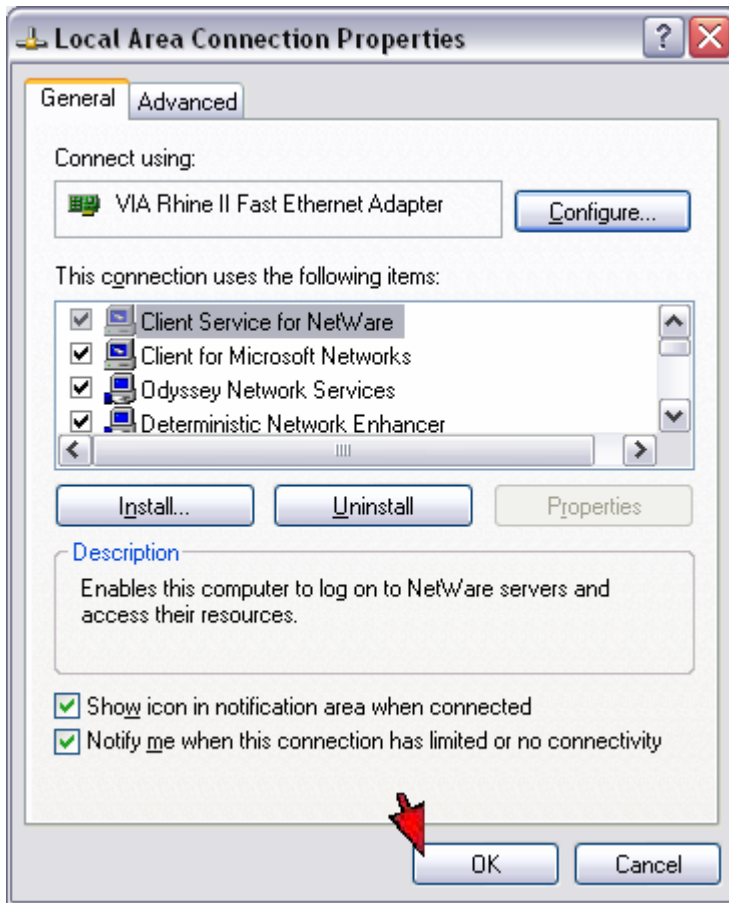




- 4) Select **Obtain an IP address automatically** and **Obtain DNS server address automatically** then click **OK**.



5) Click **OK** again.

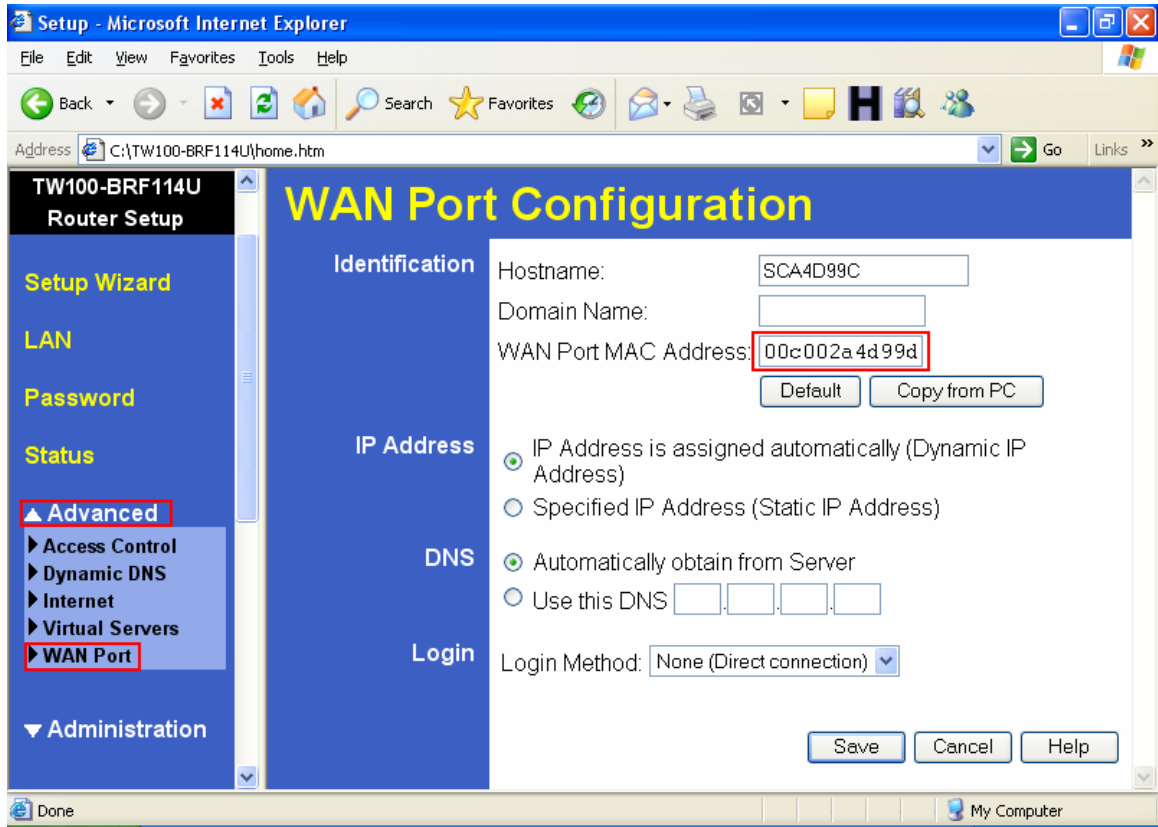


- 6) Your computer is now ready to access and configure the TW100-BRF114U.
- 7) Open your web browser and type the IP address of the TW100-BRF114U in the address bar. The default IP address is 192.168.0.1. At the login, enter your username (blank) and password (blank). **NOTE: If the Setup Wizard starts, click on Cancel.**

**Q: Where can I find the MAC Address of my TW100-BRF114U?**

A: The MAC Address can be found on a label on the bottom of the router. You can alternately find it by doing the following:

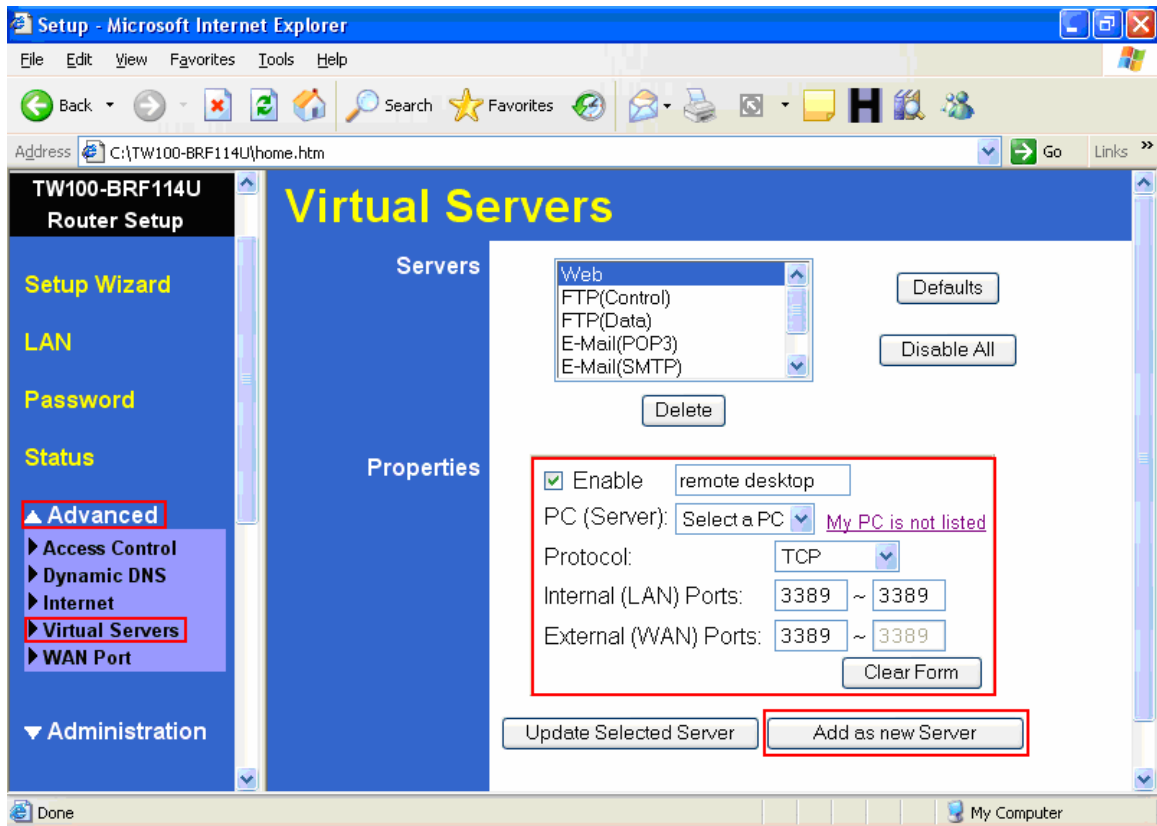
- 1) Open your web browser and type the IP address of the TW100-BRF114U in the address bar. The default IP address is 192.168.0.1. At the login, enter your username (blank) and password (blank). **NOTE: If the Setup Wizard starts, click on Cancel.**
- 2) Click on **LAN** at the top of the page.
- 3) The MAC address is listed next to the WAN Port MAC Address field.



**Q: How do I forward ports in my TW100-BRF114U?**

A: Open your web browser and type the IP address of the TW100-BRF114U in the address bar. The default IP address is 192.168.0.1. At the login, enter your username (blank) and password (blank). **NOTE: If the Setup Wizard starts, click on Cancel.**

- 1) Put a check mark in the **Enable** box. Rename the service, select the **PC** that you want the port forwarded too, select **TCP, UDP** or both **TPC/UDP** for the protocol, then input the port (if it's a single port, enter the port in both box's and the port range in the **Internal LAN Ports** or input the port if in a range), input the port needed on the **External WAN Port** (this port is usually the same port as the LAN port), then click **Add as new Server**.



**Q: What is the port name that I use when installing a printer?**

A: The port name is "L1", without the quotes and it is case sensitive.

**Q: How do I install my printer on Windows 95/98/ME?**

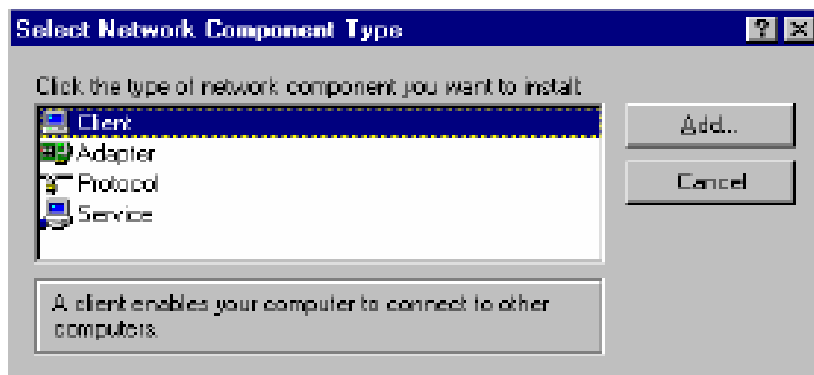
In Windows 98/ME you will need to install the **LPR** client.

For Windows 98/ME you will also need to know the port name that you are printing to (The Port Name is L1).

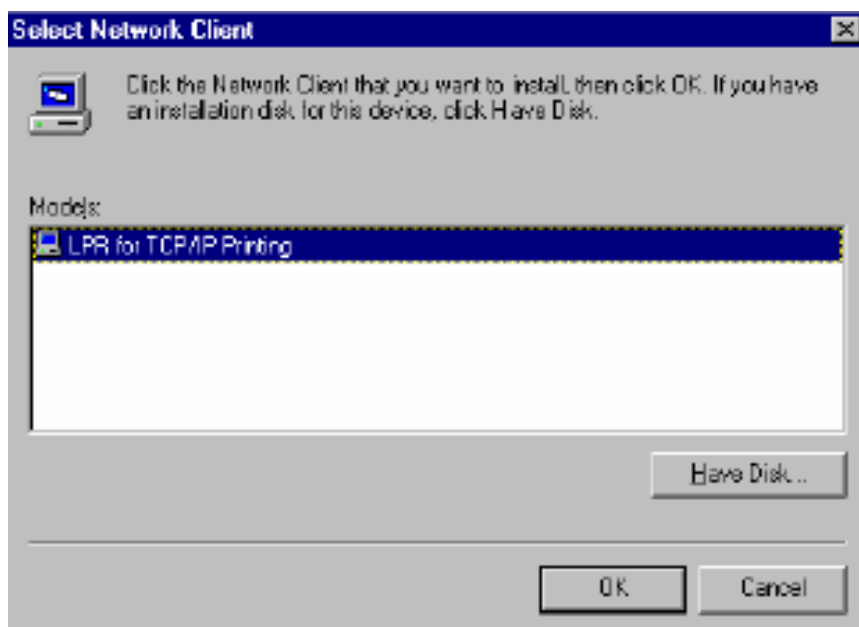
### **Installing LPR:**

**Step 1** Once the file is downloaded and extracted, Go to **Start > Settings > Control Panel > double-click on Networks**. Click on **Add**

**Step 2** Highlight **Client** and click on **Add**.

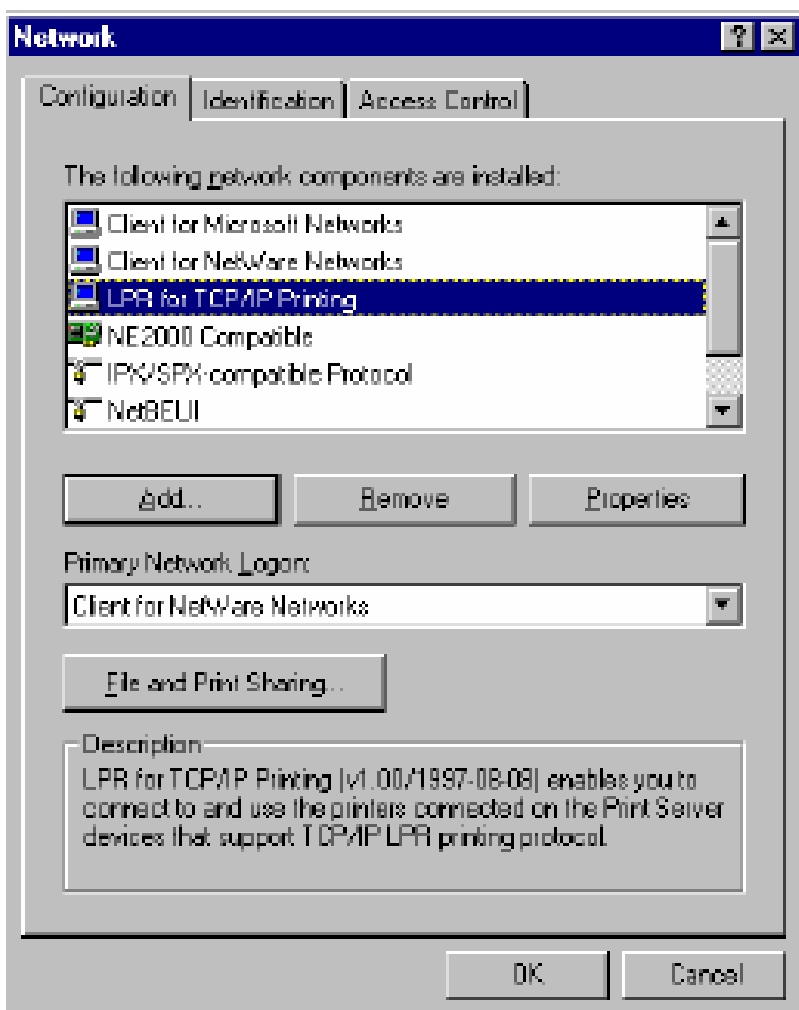


**Step 3** Click on **Have Disk > Browse**. Browse to the location of the extracted LPR Client.

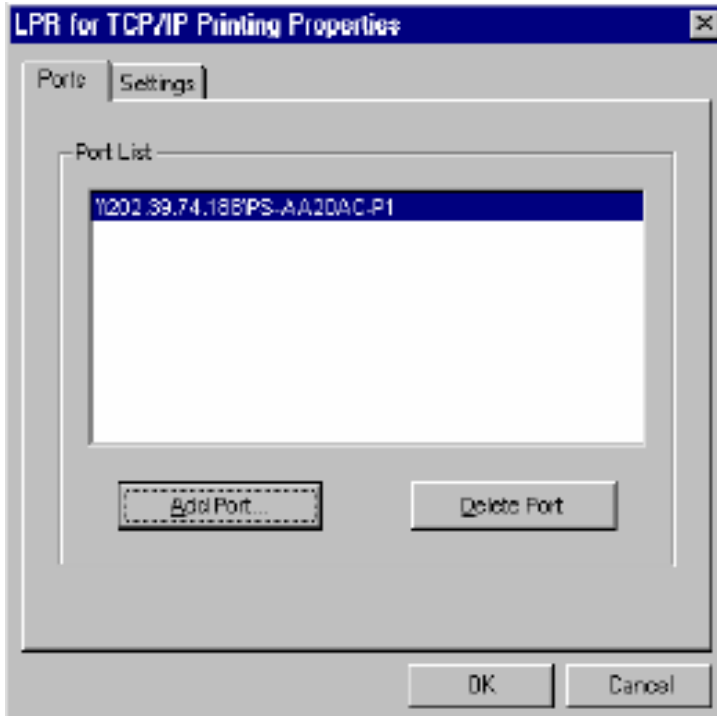


**Step 4** Click **OK** 3 times.

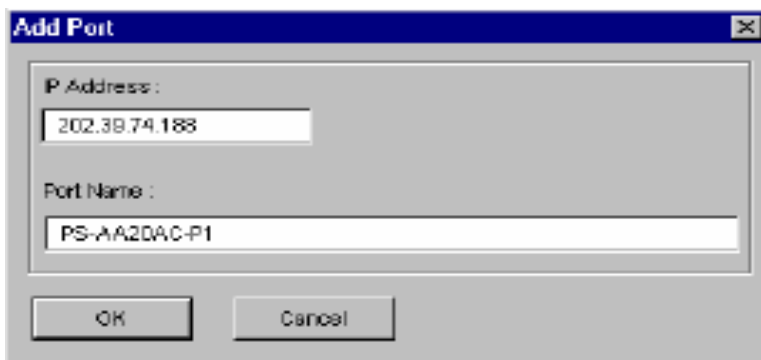
**Step 5** From the list highlight **LPR for TCP/IP** and click on **Properties**.



**Step 6** Click on Add Port



In the top field type in the IP address of your router, the default IP address is 192.168.0.1. In the bottom field type in the port name of your router, the Port Name is L1.



**Step 7** Click on **OK**. Windows will ask you to restart. Click **Yes**.

LPR is now properly installed on your computer.

### **Printer Installation**

**Step 1** Open your printers folder. Go to Start > Settings > Printers.

**Step 2** Double-click on the Add Printer icon, which will launch the Add Printer Wizard.





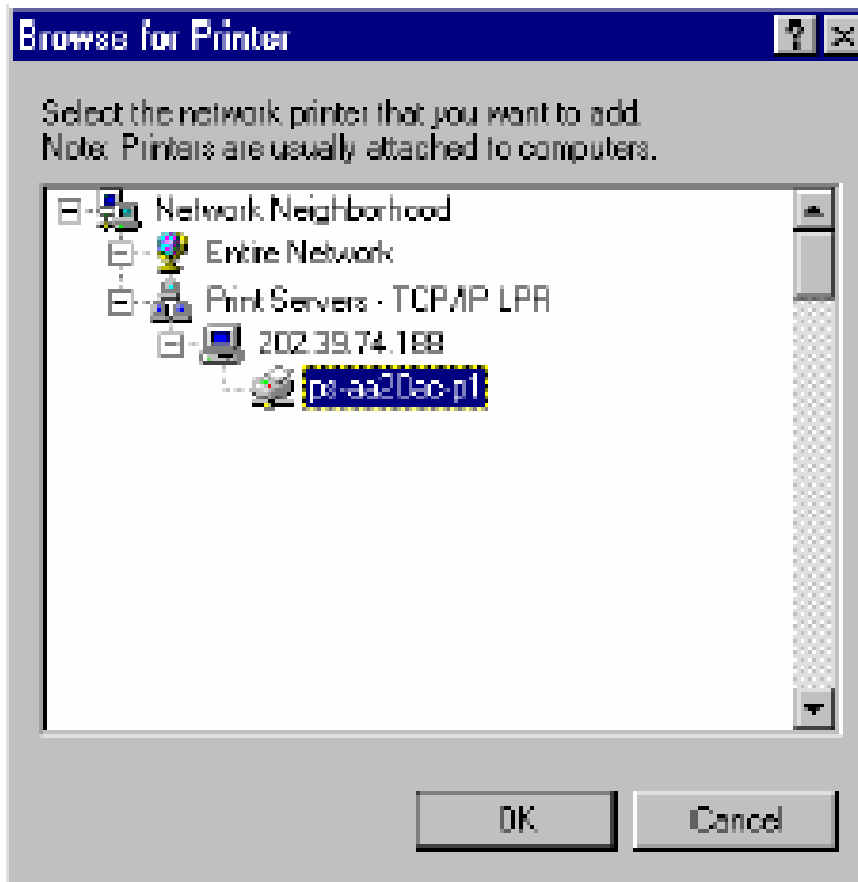
Select **Network Printer** and click on **Next**.



**Step 3** Click on the **Browse** button and browse to the router.

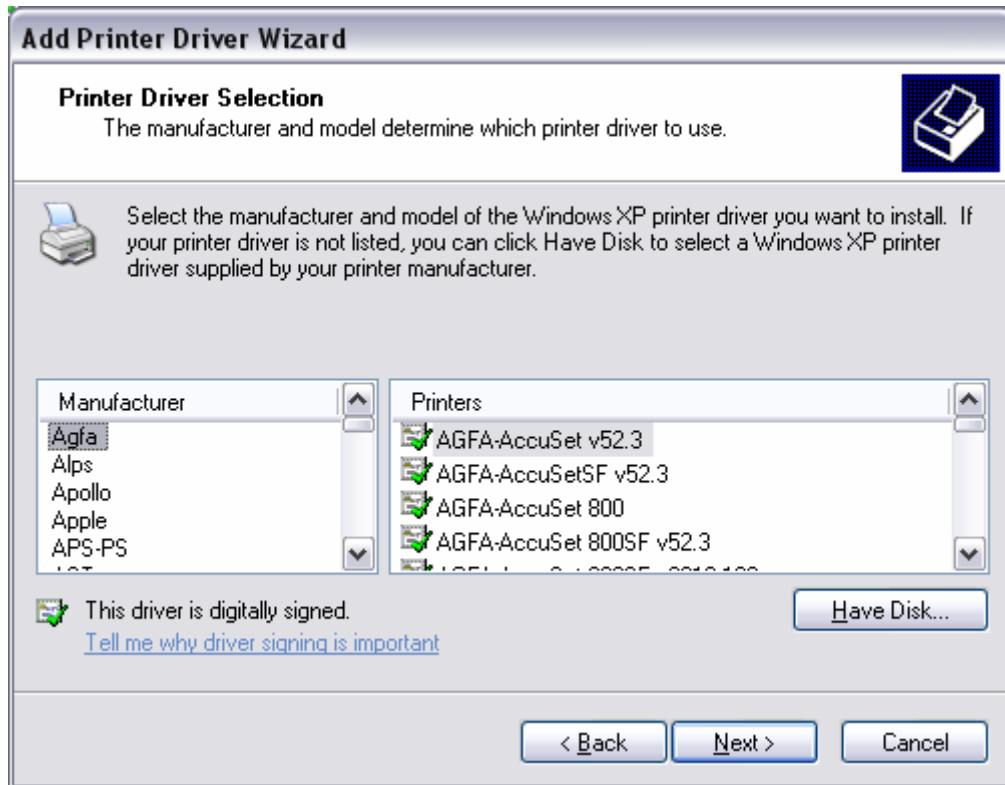


Highlight the router and click on **OK** to return to the Add Printer Wizard.



Click on **Next**. If you are unable to do this you can manually enter the router by using two backslashes, the IP address, one backlash and the port name of you printer.

**Step 4** You will now be asked to select a printer to install.



If you cannot find your printer from the list, click on the **Have Disk** button and browse to the printer drivers for your printer (floppy, CD, or downloaded).

**Step 5** If you find your printer in the list, click on it and then click on **OK**. Windows will install the drivers.

**Step 6** Once the drivers have been installed, click **Finish** to complete the installation. You may be prompted for your Windows CD. If you are prompted for the CD, browse to the Win98 folder on the Windows CD and click on **OK**.

**Step 7** After the drivers have been installed for your printer, you will be prompted to print a test page. Select **yes** and click on **Finish**.

#### **Q: How do I install my printer on Windows 2000/XP?**

**Step 1** Go to **Start>Settings>Printers>Add New Printer** (WinXP - **Start>Printers and Faxes>Add a Printer**).


**Step 2** Select **Local Printer**. Make sure to uncheck **Automatically detect and install my plug and play printer**. Click **Next**.

**Add Printer Wizard**

**Local or Network Printer**  
The wizard needs to know which type of printer to set up.

Select the option that describes the printer you want to use:

Local printer attached to this computer:  
 Automatically detect and install my Plug and Play printer  
 A network printer, or a printer attached to another computer

 To set up a network printer that is not attached to a print server, use the "Local printer" option.

< Back   Next >   Cancel

**Step 3** Select **Create a New Port** and select **Standard TCP/IP port**. Click **Next**.


**Add Printer Wizard**

**Select a Printer Port**  
Computers communicate with printers through ports.

Select the port you want your printer to use. If the port is not listed, you can create a new port.

Use the following port: LPT1: (Recommended Printer Port)

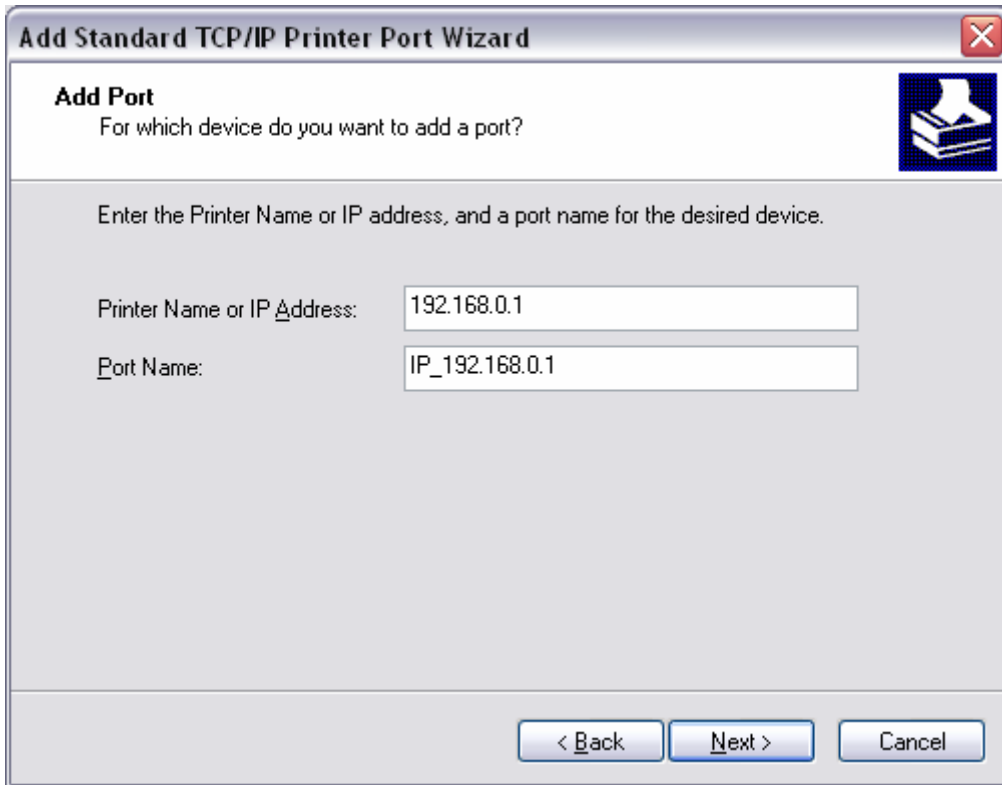
Note: Most computers use the LPT1: port to communicate with a local printer. The connector for this port should look something like this:



Create a new port:  
Type of port: Standard TCP/IP Port

< Back   Next >   Cancel

**Step 4** Enter the IP address of the router (192.168.0.1). Leave the port name with the default name. Click **Next**.



**Add Standard TCP/IP Printer Port Wizard**

**Add Port**  
For which device do you want to add a port?

Enter the Printer Name or IP address, and a port name for the desired device.

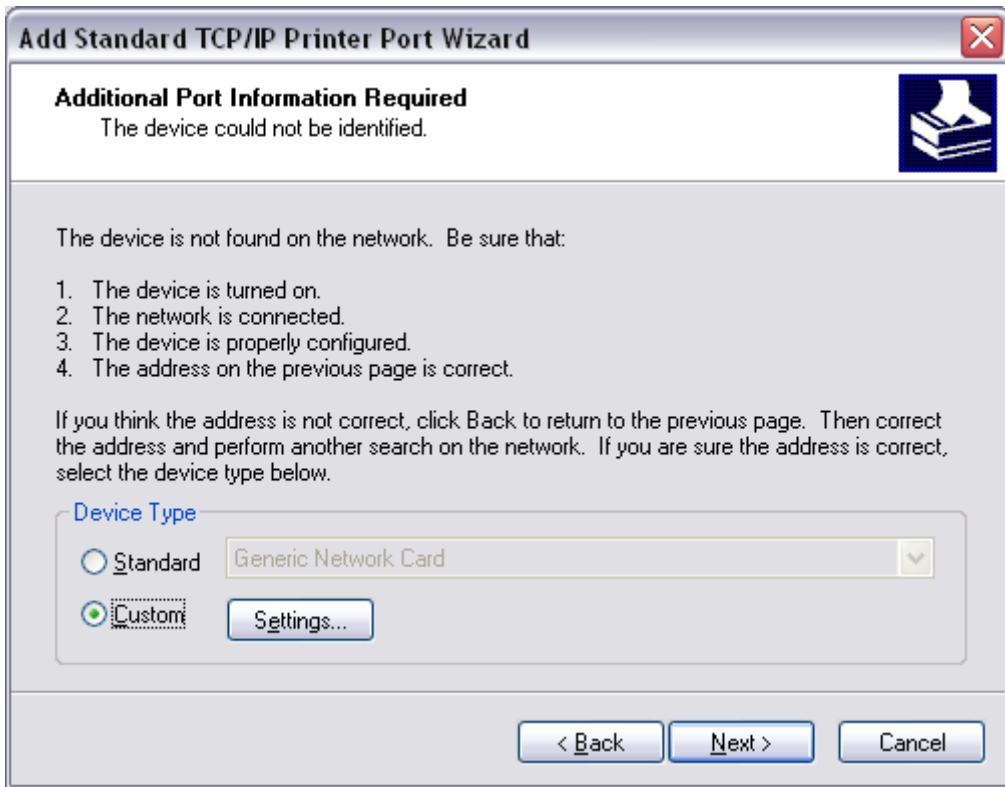
Printer Name or IP Address: 192.168.0.1

Port Name: IP\_192.168.0.1

< Back   Next >   Cancel

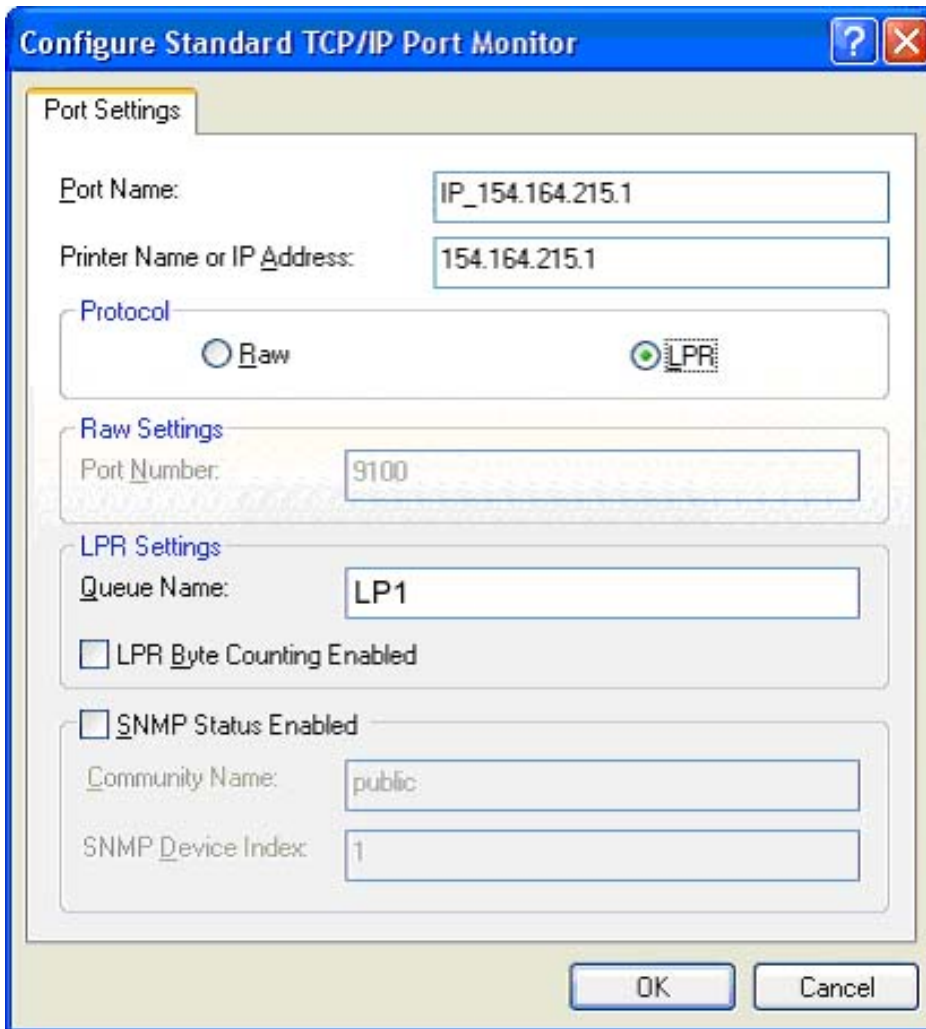
**Step 5** You will get a message saying that additional port information required.

**Step 6** Select **Custom** and then click **Settings**.



**Step 7** Set the Protocol to **LPR**.

**Step 8** For the **LPR Settings** for the TW100-BRF114U the Queue Name will be L1. It is case sensitive!



**Configure Standard TCP/IP Port Monitor**

**Port Settings**

Port Name: IP\_154.164.215.1

Printer Name or IP Address: 154.164.215.1

Protocol

Raw  LPR

**Raw Settings**

Port Number: 9100

**LPR Settings**

Queue Name: LP1

LPR Byte Counting Enabled

SNMP Status Enabled

Community Name: public

SNMP Device Index: 1


OK Cancel


**Step 9** Select **OK > Finish**.

**Step 10** Continue with the **Add Printer Wizard**. Choose your printer from the list or click **Have Disk** and point to your printer driver disk.

**Add Printer Wizard**

**Add Printer Wizard**  
The manufacturer and model determine which printer to use.



 Select the manufacturer and model of your printer. If your printer came with an installation disk, click Have Disk. If your printer is not listed, consult your printer documentation for a compatible printer.

Manufacturers:	Printers:
Agfa	AGFA-AccuSet v52.3
Alps	AGFA-AccuSetSF v52.3
Apollo	AGFA-AccuSet 800
Apple	AGFA-AccuSet 800SF v52.3
APS-PS	AGFA-AccuSet 800SF v2013.108
AST	AGFA-AccuSet 1000
AT&T	AGFA-AccuSet 1000SF v52.3