

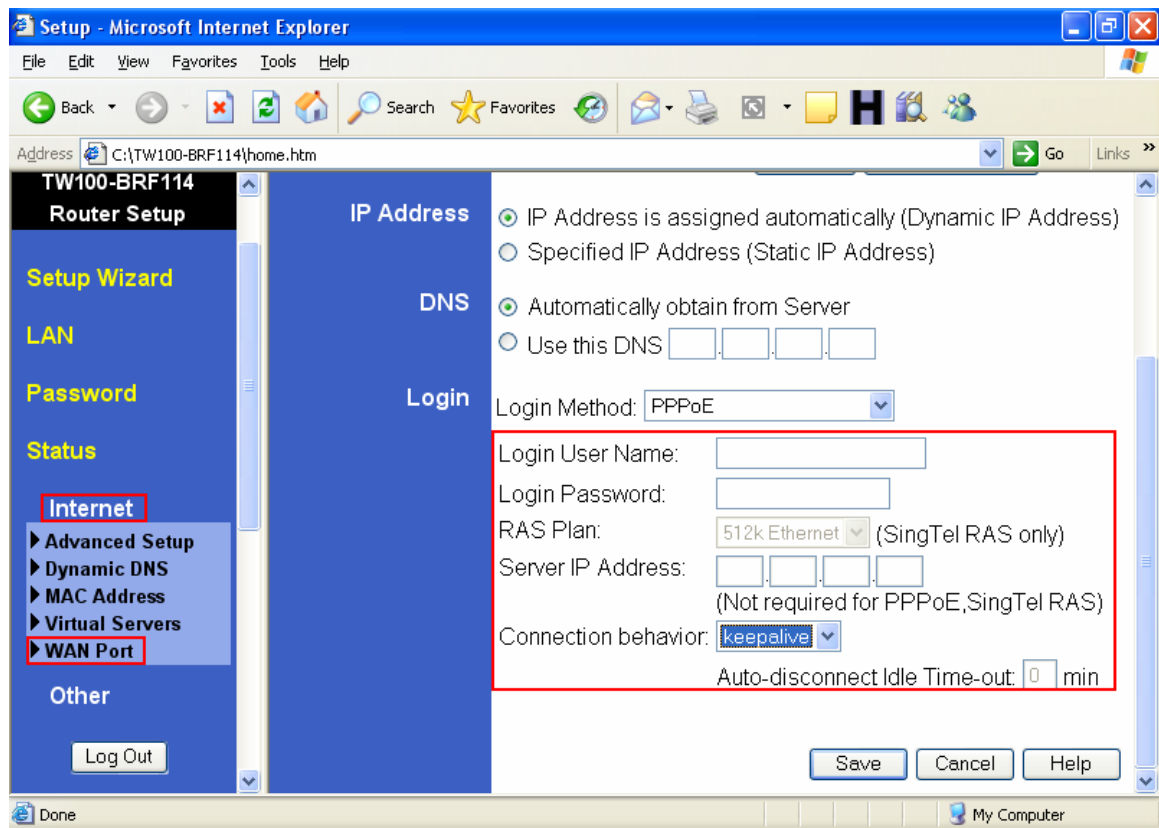
## F.A.Q. for TW100-BRF114

**Q: How do I configure the TW100-BRF114 for a DSL, PPPoE connection?**

A: Open your web browser and type the IP address of the TW100-BRF114 in the address bar. The default IP address is 192.168.0.1. At the login, enter your username (blank) and password (blank). **NOTE: If the Setup Wizard starts, click on Cancel.**

Click on **Advanced** then **WAN Port** on the left hand side.

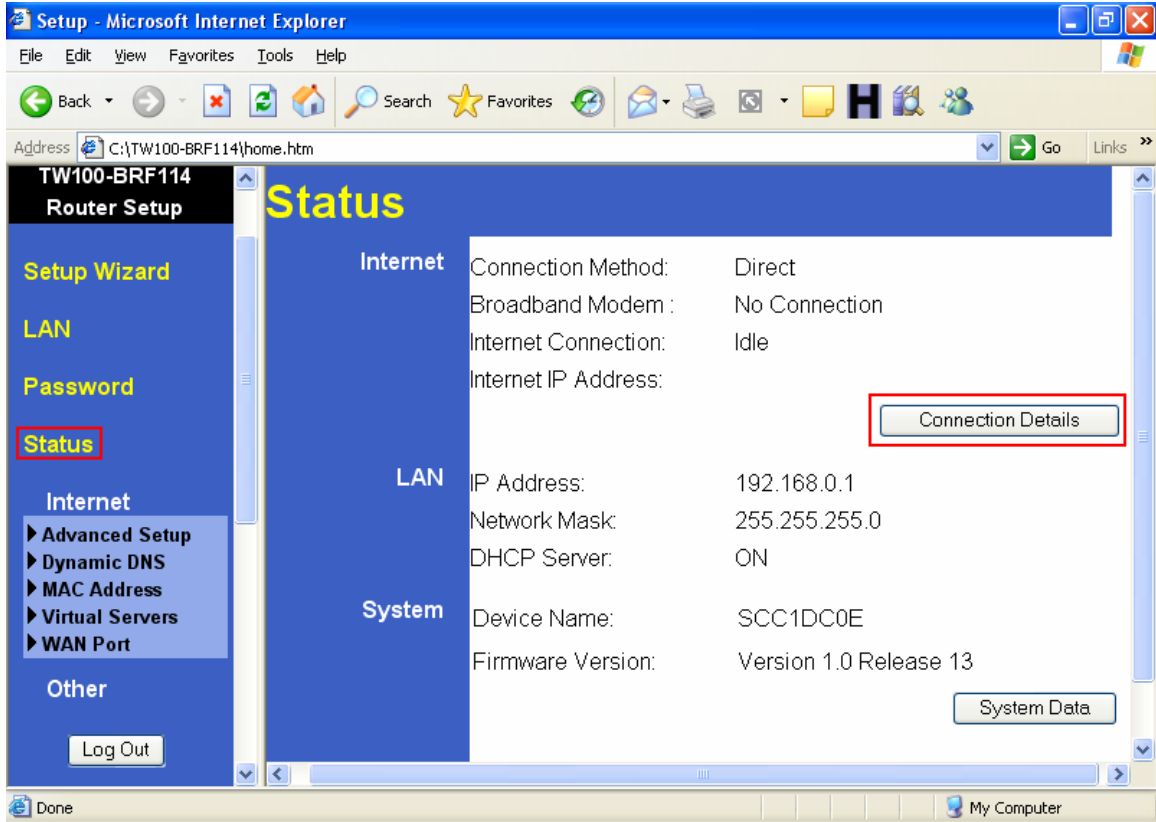
- 1) Choose **PPPoE** for the **Login Method** in the **Login** section.
- 2) Enter your **Username** and **Password** provided by your ISP (Internet Service Provider).
- 3) Click on the down arrow for the **Connection behavior** and select **“keepalive”**.
- 4) Click **Save**.



**Note: After you save the settings you may need to power cycle the modem and router.**

- 1) Disconnect the power cycle from the modem and router.
- 2) Wait approximately 15 seconds.
- 3) Reconnect the modem first and wait for it to boot up.
- 4) After the modem has booted up reconnect the router.

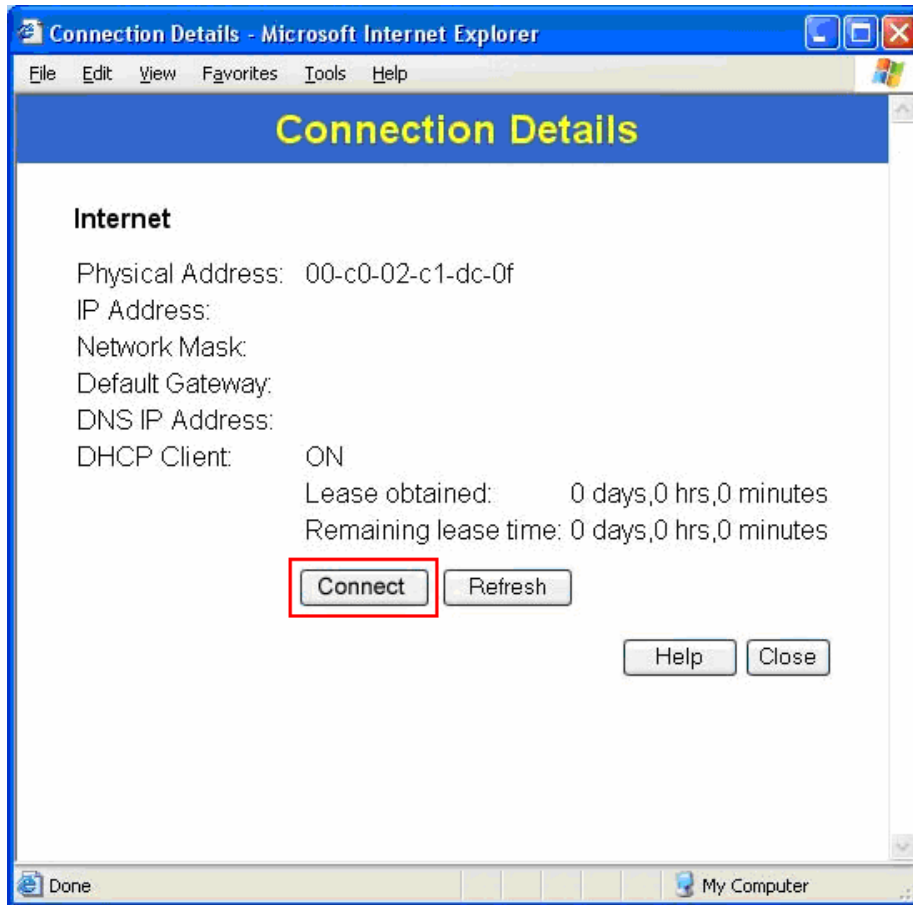
- 5) Open your web browser and type the IP address of the TW100-BRF114 in the address bar. The default IP address is 192.168.0.1. At the login, enter your username (blank) and password (blank). **NOTE: If the Setup Wizard starts, click on Cancel.**
- 6) Go to **Status** on the left hand side of the screen and then click on **Connection Details**. This will open a new window.



The screenshot shows the 'Status' page of the TW100-BRF114 Router Setup interface. The left sidebar contains navigation options: Setup Wizard, LAN, Password, Status (highlighted with a red box), Internet, Advanced Setup, Dynamic DNS, MAC Address, Virtual Servers, WAN Port, and Other. The main content area displays the following information:

Category	Parameter	Value
Internet	Connection Method:	Direct
	Broadband Modem :	No Connection
	Internet Connection:	Idle
	Internet IP Address:	
LAN	IP Address:	192.168.0.1
	Network Mask:	255.255.255.0
	DHCP Server:	ON
System	Device Name:	SCC1DC0E
	Firmware Version:	Version 1.0 Release 13

A 'Connection Details' button is highlighted with a red box in the Internet section. A 'System Data' button is located at the bottom right of the main content area. The browser's address bar shows 'C:\TW100-BRF114\home.htm'.

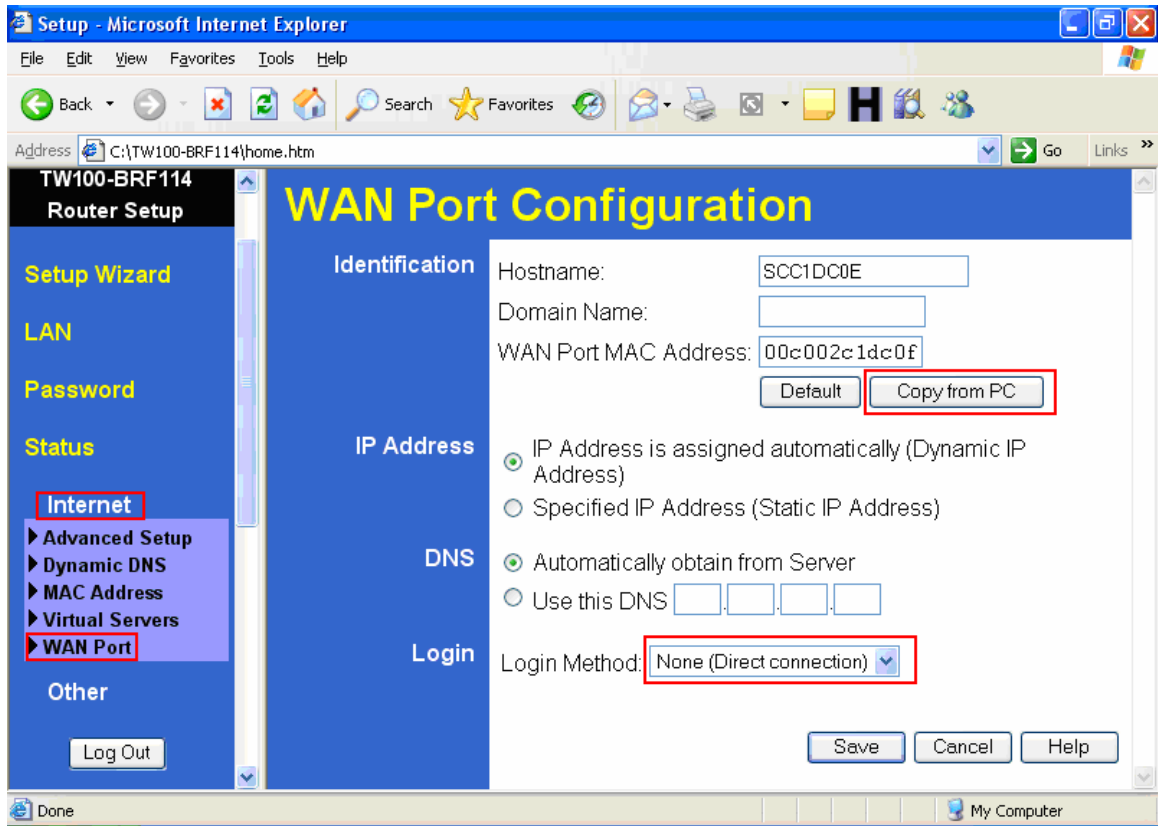


7) Click on **Connect**, wait a few seconds and see if it gets an IP address from your ISP.

**Q: How do I configure the TW100-BRF114 for a Cable connection using a Dynamic IP Address?**

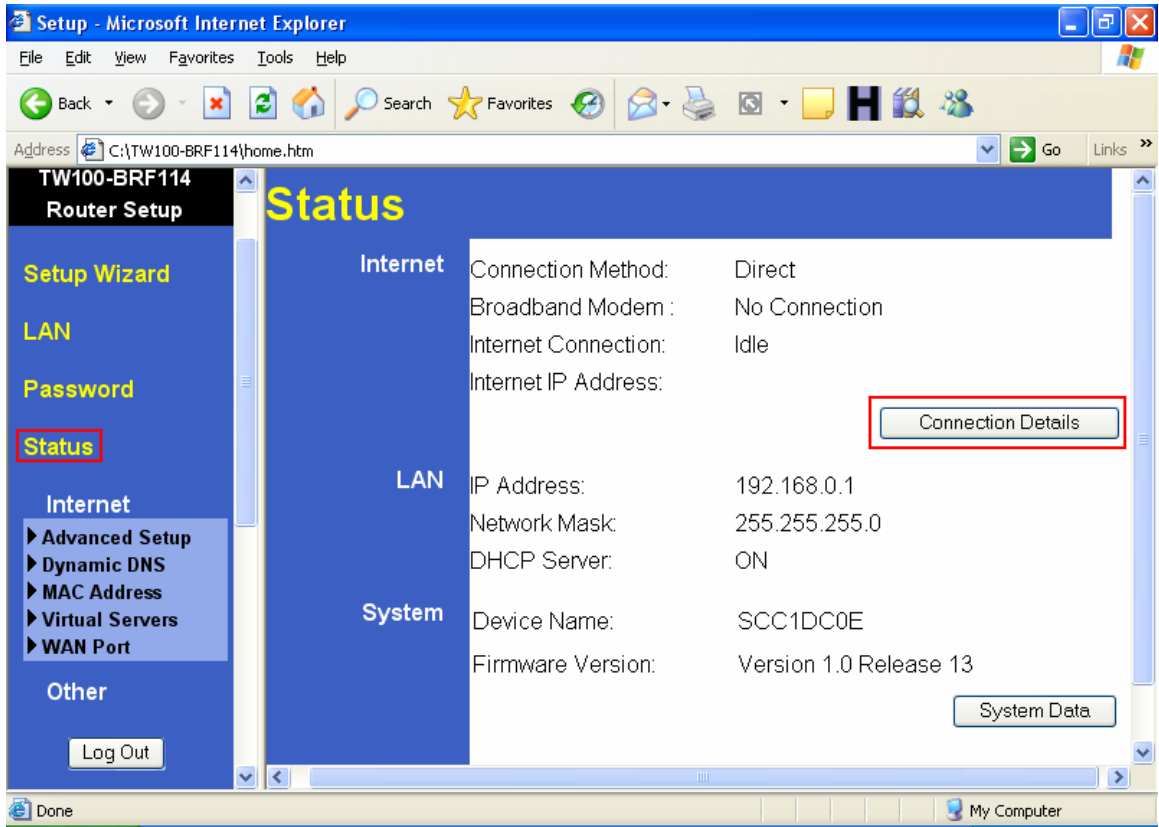
**A: Note: The default setting of the router is configured for a Cable connection using a Dynamic IP Address.**

- 1) Open your web browser and type the IP address of the TW100-BRF114 in the address bar. The default IP address is 192.168.0.1. At the login, enter your username (blank) and password (blank). **NOTE: If the Setup Wizard starts, click on Cancel.**
- 2) Click on **Advanced** then **WAN Port** on the left hand side
- 3) If your ISP has registered the MAC address of your computer that you are managing the router from click on **Copy From PC** under the **WAN PORT MAC Address** field. This will copy your computers MAC address to the router. If you are not managing the computer from the computer with the registered MAC address make sure you enter the registered MAC address manually.
- 4) Choose **None (Direct Connection)** in the **Login Method** field in the **Login** section.
- 5) Click **Save**.



**Note: After you save the settings you may need to power cycle the modem and router.**

- 1) Disconnect the power cycle from the modem and router.
- 2) Wait approximately 15 seconds.
- 3) Reconnect the modem first and wait for it to boot up.
- 4) After the modem has booted up reconnect the router. Open your web browser and type the IP address of the TW100-BRF114 in the address bar. The default IP address is 192.168.0.1. At the login, enter your username (blank) and password (blank). **NOTE: If the Setup Wizard starts, click on Cancel.**
- 5) Go to Status on the left hand side of the screen and then click on Connection Details. This will open a new window.



**TW100-BRF114 Router Setup**

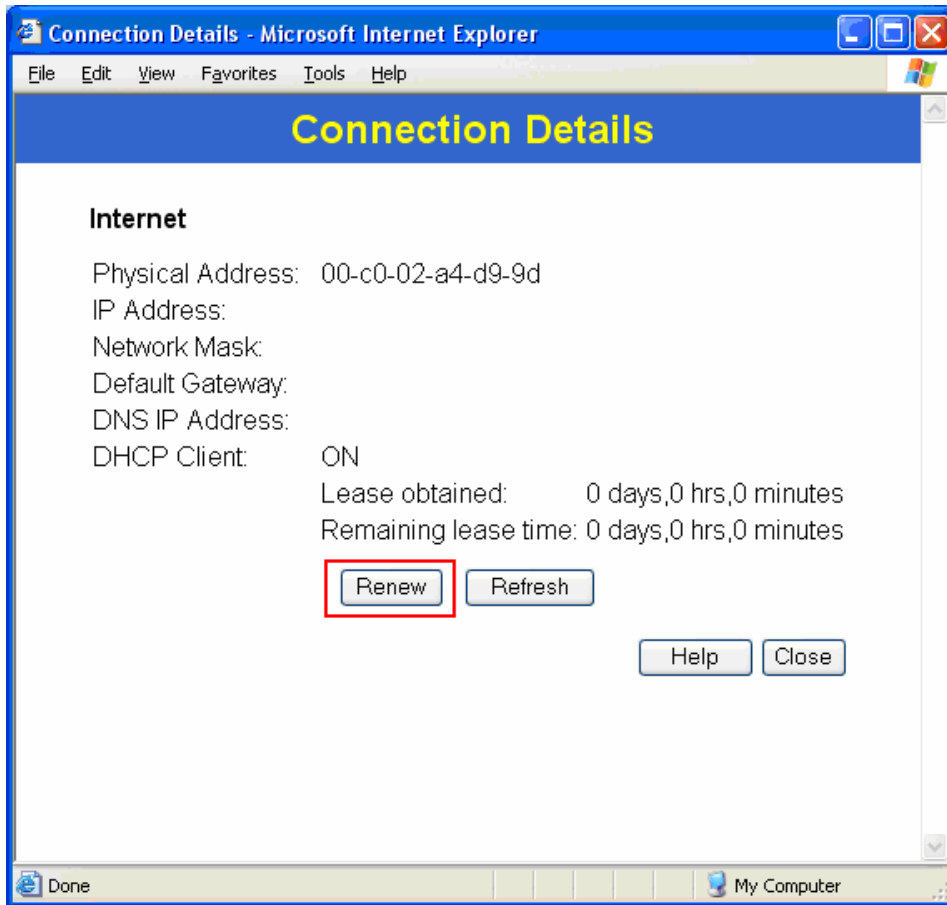
- Setup Wizard
- LAN
- Password
- Status**
- Internet
  - Advanced Setup
  - Dynamic DNS
  - MAC Address
  - Virtual Servers
  - WAN Port
- Other

Log Out

## Status

<b>Internet</b>	Connection Method:	Direct
	Broadband Modem :	No Connection
	Internet Connection:	Idle
	Internet IP Address:	
		<a href="#">Connection Details</a>
<b>LAN</b>	IP Address:	192.168.0.1
	Network Mask:	255.255.255.0
	DHCP Server:	ON
<b>System</b>	Device Name:	SCC1DC0E
	Firmware Version:	Version 1.0 Release 13

[System Data](#)

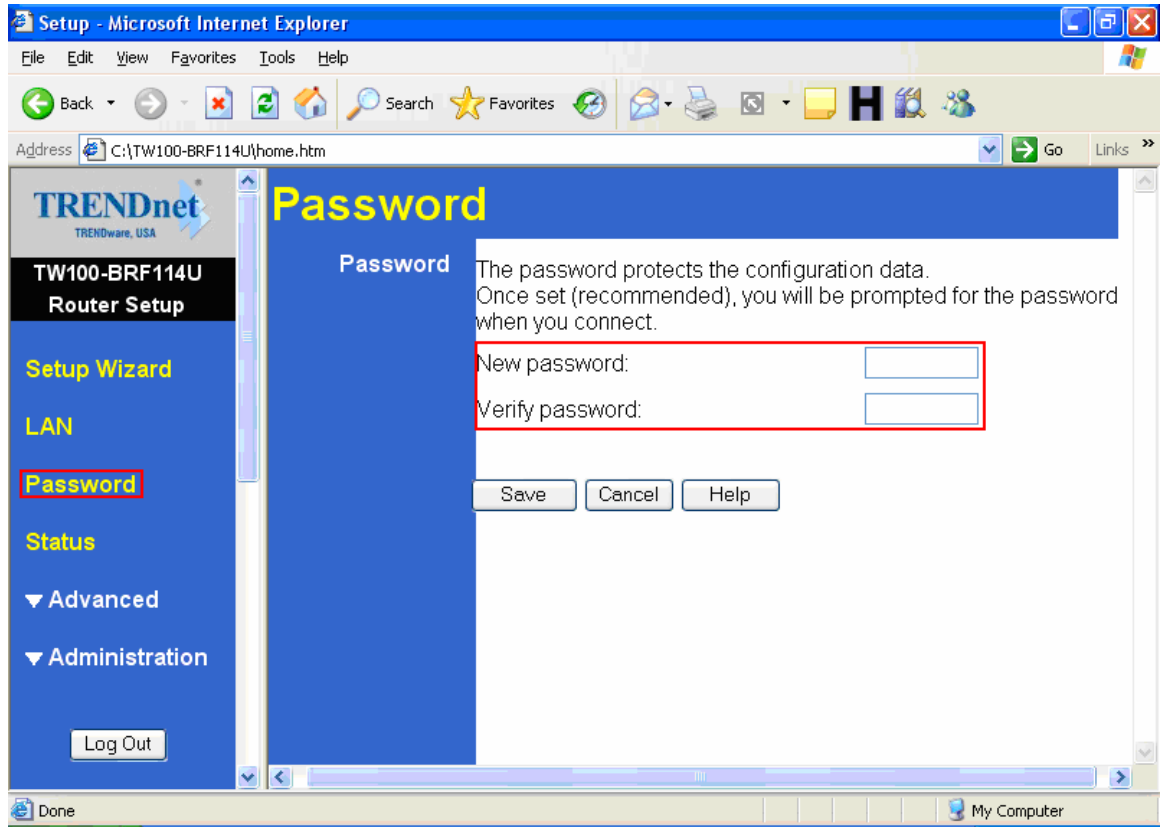


7) Click on **Renew**, wait a few seconds and see if it gets an IP address from your ISP.

**Q: How do I change the username & password on my TW100-BRF114?**

A: Open your web browser and type the IP address of the TW100-BRF114 in the address bar. The default IP address is 192.168.0.1. At the login, enter your username (blank) and password (blank). **NOTE: If the Setup Wizard starts, click on Cancel.**

1) Click on **Password** on the left hand side.



- 2) Enter in the desired username and password.
- 3) Click **Save**.

**Q: What can I do if I forgot my password or want to reset back to factory defaults?**

- 1) Locate the reset button on the back of the TW100-BRF114.
- 2) Press and hold in the reset button for approximately 15 seconds. This will reset the unit back to its default configuration.

**Q: What is the default IP address of my TW100-BRF114?**

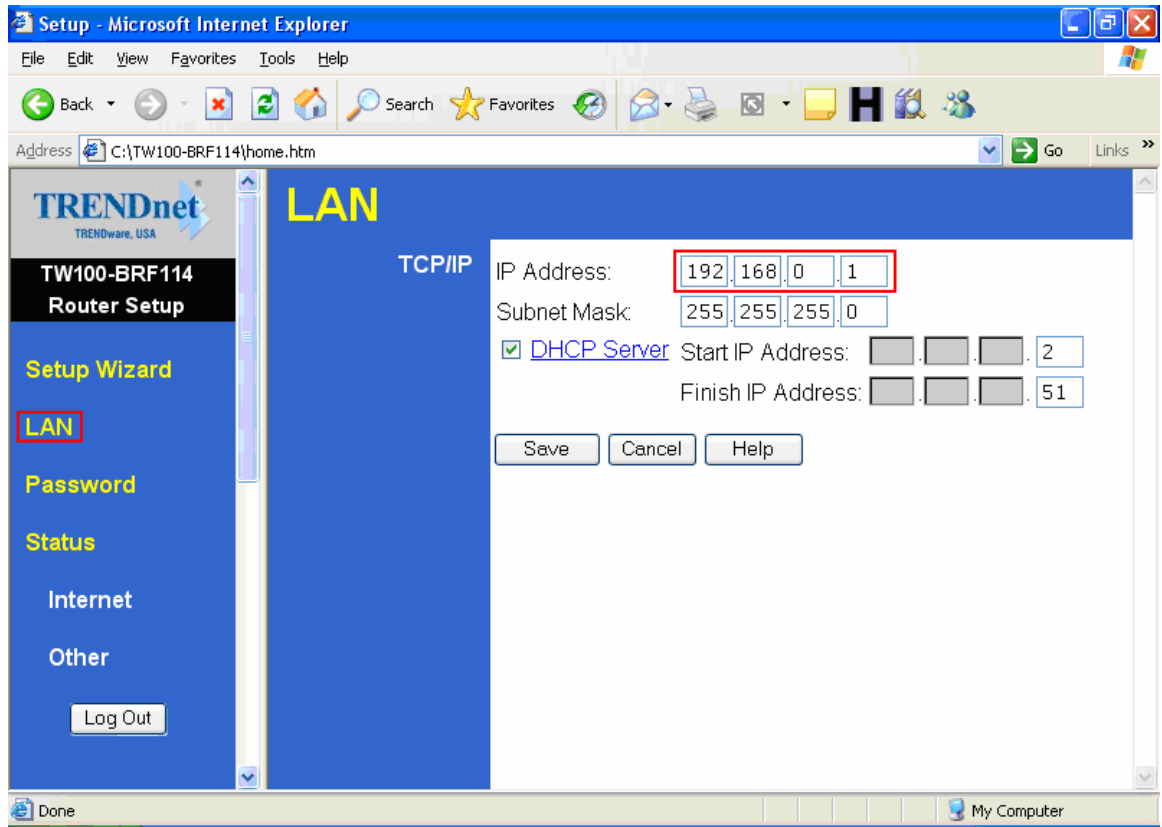
A: The default IP address for the TW100-BRF114 is 192.168.0.1.

**Q: What is the default username and password for the TW100-BRF114?**

A: The default username & password for the TW100-BRF114 are both (blank). There is no username and password set by default.

**Q: How do I change the IP Address of my TW100-BRF114?**

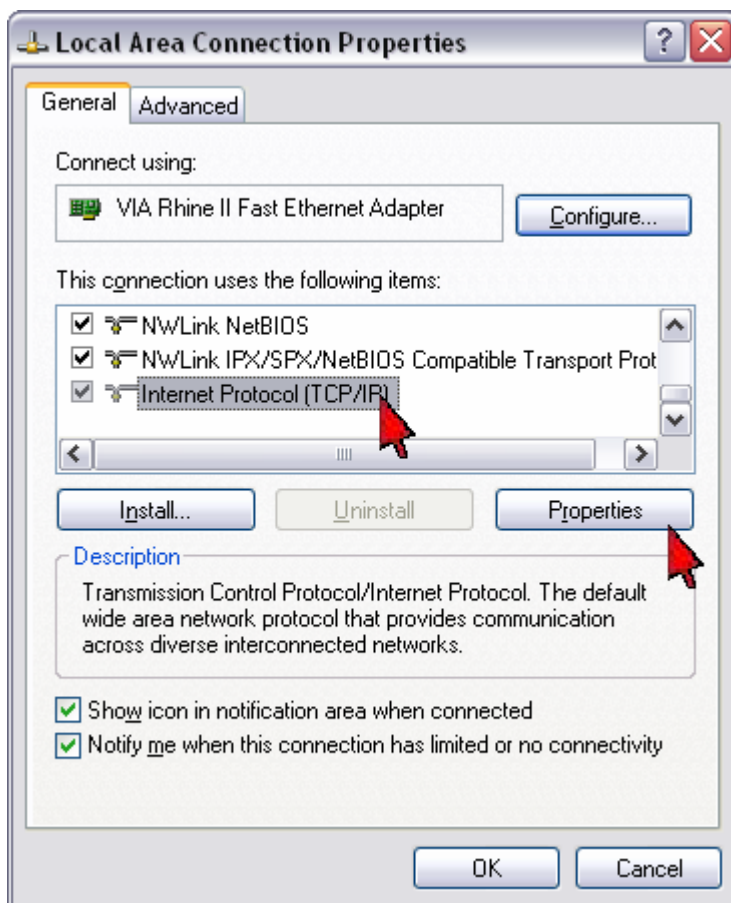
- 1) Open your web browser and type the IP address of the TW100-BRF114 in the address bar. The default IP address is 192.168.0.1. At the login, enter your username (blank) and password (blank). **NOTE: If the Setup Wizard starts, click on Cancel.**
- 2) Click on **LAN** on the left hand side.
- 3) Change the IP address in the IP Address field.
- 4) Click **Save**.

**Q: How do I configure the TW100-BRF114?**

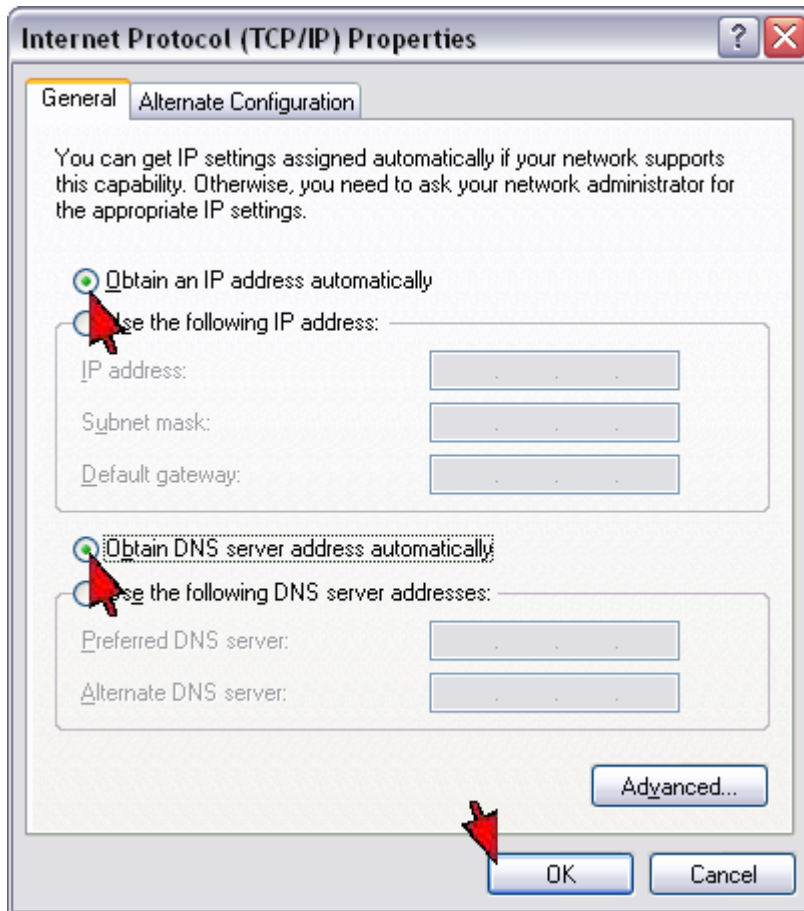
A: Click **Start** then click on the **Control Panel**. For Windows 2000 click on **Start**, highlight settings then click on the **Control Panel**.

- 1) Double-Click on the **Network Connection** icon.
- 2) Right-Click on the **Local Area Connection** icon then click on **Properties**.
- 3) Highlight the **Internet Protocol (TCP/IP)** by single clicking on it then click on **Properties**.

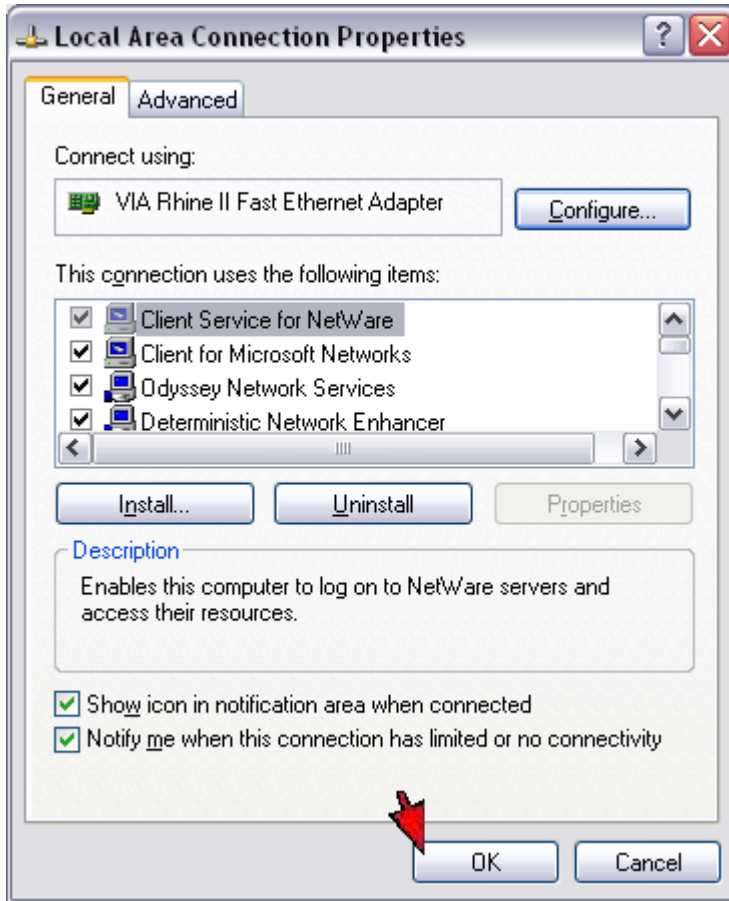




- 4) Select **Obtain an IP address automatically** and **Obtain DNS server address automatically** then click **OK**.



5) Click **OK** again.

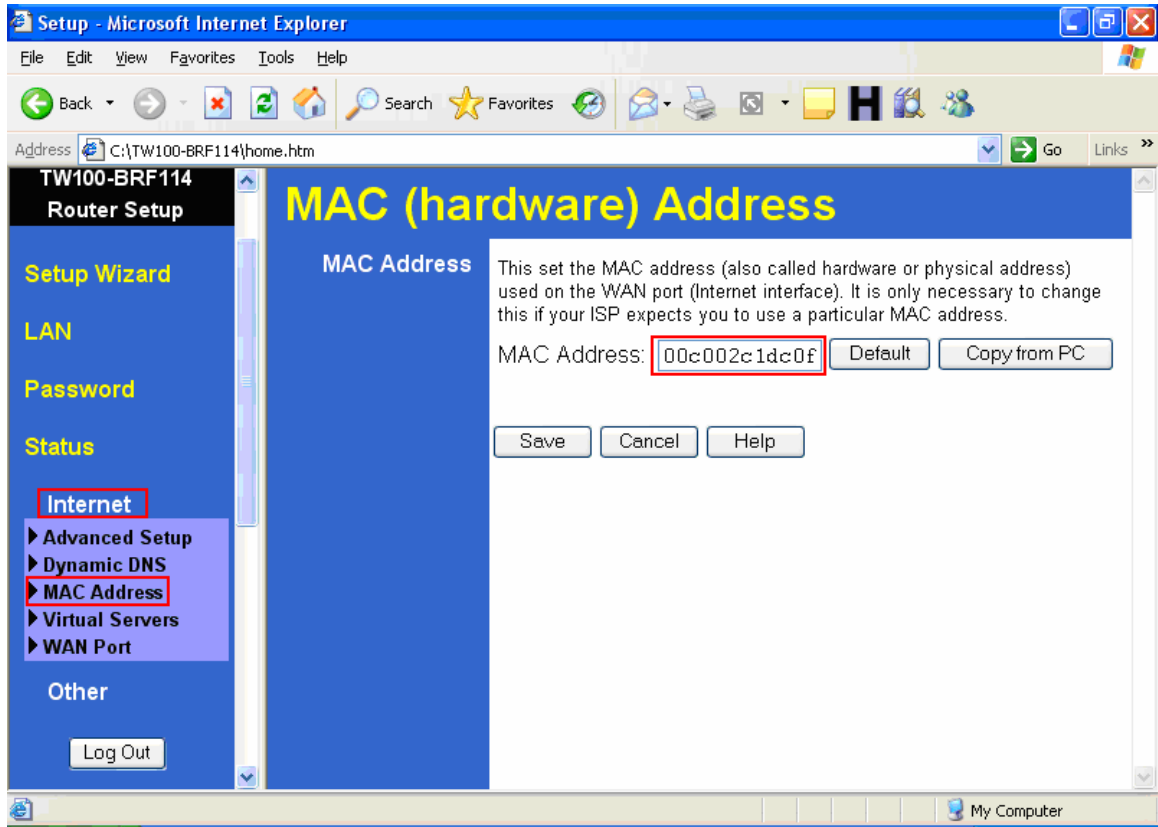


- 6) Your computer is now ready to access and configure the TW100-BRF114.
- 7) Open your web browser and type the IP address of the TW100-BRF114 in the address bar. The default IP address is 192.168.0.1. At the login, enter your username (blank) and password (blank). **NOTE: If the Setup Wizard starts, click on Cancel.**

**Q: Where can I find the MAC Address of my TW100-BRF114?**

A: The MAC Address can be found on a label on the bottom of the router. You can alternately find it by doing the following:

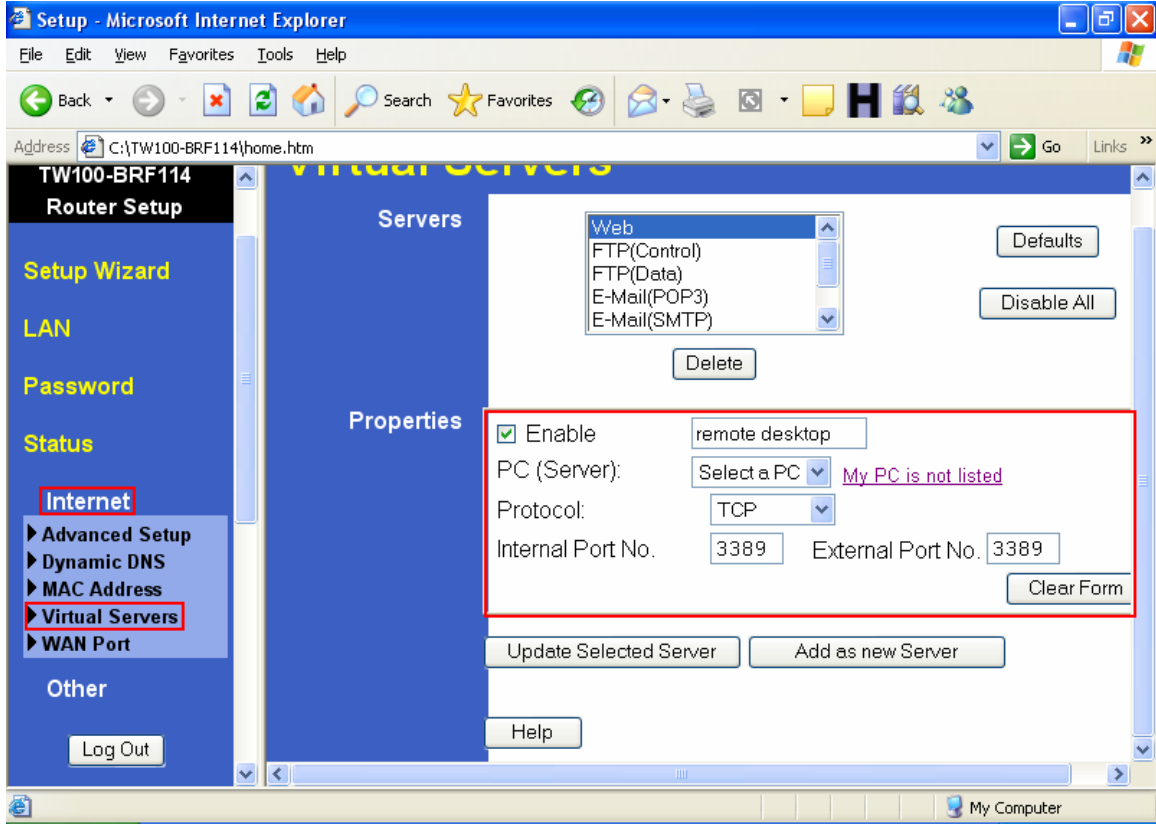
- 1) Open your web browser and type the IP address of the TW100-BRF114 in the address bar. The default IP address is 192.168.0.1. At the login, enter your username (blank) and password (blank). **NOTE: If the Setup Wizard starts, click on Cancel.**
- 2) Click on **LAN** at the top of the page.
- 3) The MAC address is listed next to the WAN Port MAC Address field.



**Q: How do I forward ports in my TW100-BRF114?**

A: Open your web browser and type the IP address of the TW100-BRF114 in the address bar. The default IP address is 192.168.0.1. At the login, enter your username (blank) and password (blank). **NOTE: If the Setup Wizard starts, click on Cancel.**

- 1) Put a check mark in the **Enable** box. Rename the service, select the **PC** that you want the port forwarded too, select **TCP, UDP** or both **TPC/UDP** for the protocol, then input the port (if it's a single port, enter the port in both box's and the port range in the **Internal LAN Ports** or input the port if in a range), input the port needed on the **External WAN Port** (this port is usually the same port as the LAN port), then click **Add as new Server**.



The screenshot shows the 'Virtual Servers' configuration page in a Microsoft Internet Explorer browser window. The browser title is 'Setup - Microsoft Internet Explorer' and the address bar shows 'C:\TW100-BRF114\home.htm'. The page has a blue sidebar with navigation options: Router Setup, Setup Wizard, LAN, Password, Status, Internet (highlighted), Advanced Setup, Dynamic DNS, MAC Address, Virtual Servers (highlighted), WAN Port, and Other. The main content area is titled 'Virtual Servers' and is divided into 'Servers' and 'Properties' sections. The 'Servers' section contains a list of server types: Web, FTP(Control), FTP(Data), E-Mail(POP3), and E-Mail(SMTP). The 'Properties' section for the selected 'Web' server is highlighted with a red box and includes: 'Enable' (checked), 'remote desktop' (text input), 'PC (Server):' (dropdown menu showing 'Select a PC' and a link 'My PC is not listed'), 'Protocol:' (dropdown menu showing 'TCP'), 'Internal Port No.' (input field '3389'), and 'External Port No.' (input field '3389'). There are buttons for 'Defaults', 'Disable All', 'Delete', 'Update Selected Server', 'Add as new Server', and 'Clear Form'. A 'Log Out' button is located at the bottom of the sidebar. The Windows taskbar at the bottom shows 'My Computer'.