

F.A.Q's for TV-IP400 and TV-IP400W

Q: How can I configure my TV-IP400(w) through the web-based configuration?

A: Open your web browser and type the IP address of the TV-IP400(w) in the address bar. The default IP address is 192.168.0.20.

Q: What is the default IP address of my TV-IP400(w)?

A: The default IP address is 192.168.0.20

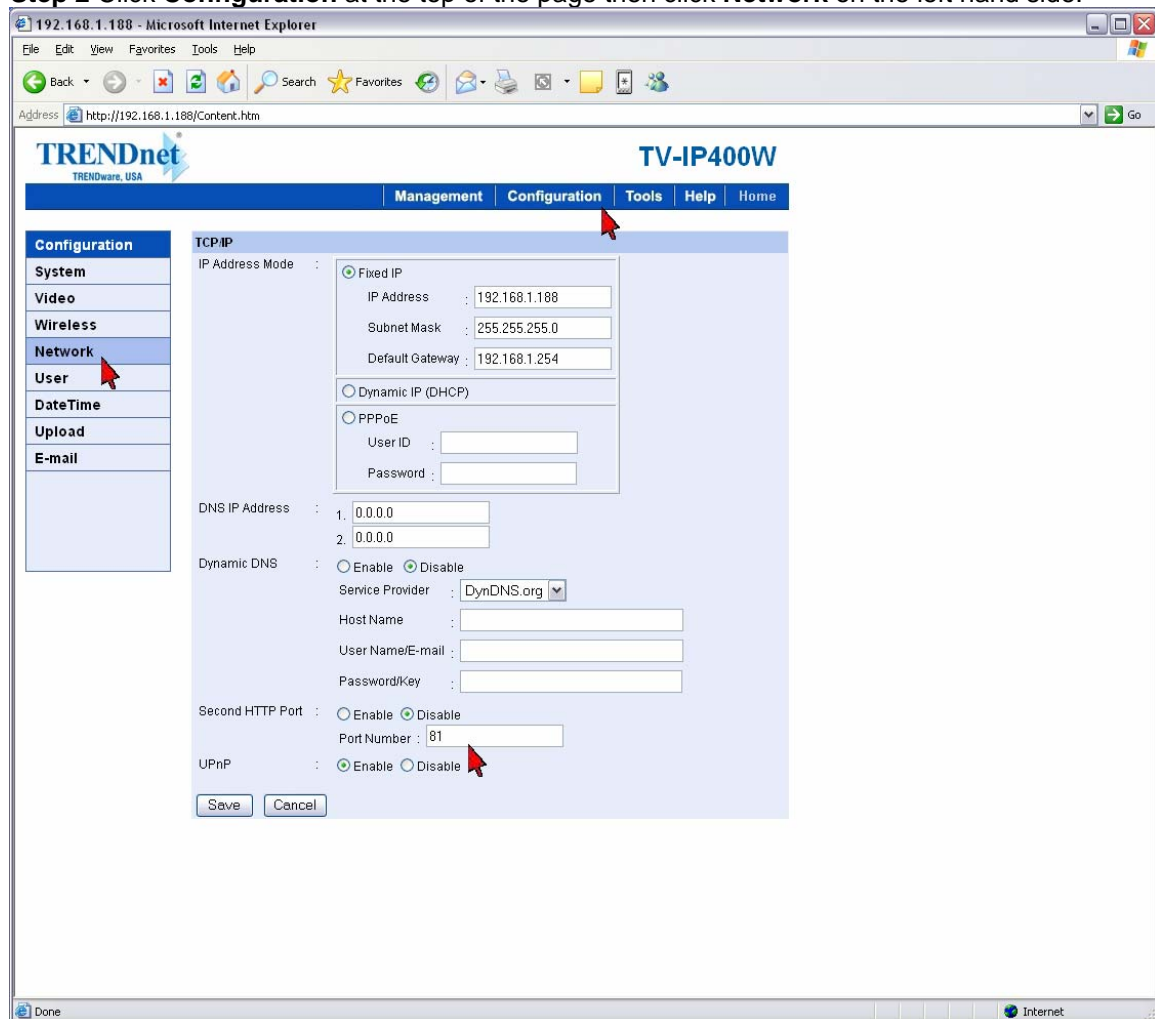
Q: How can I view the TV-IP400(w) remotely if it's behind a router or firewall?

A: Each camera behind a firewall or router will need to forward the port that the camera is using. The default port is 80.

If you are installing multiple cameras you must change the port on the additional cameras.

Step 1 Open your web browser and type the IP address of the TV-IP400(w) in the address bar. The default IP address is 192.168.0.20.

Step 2 Click **Configuration** at the top of the page then click **Network** on the left hand side.

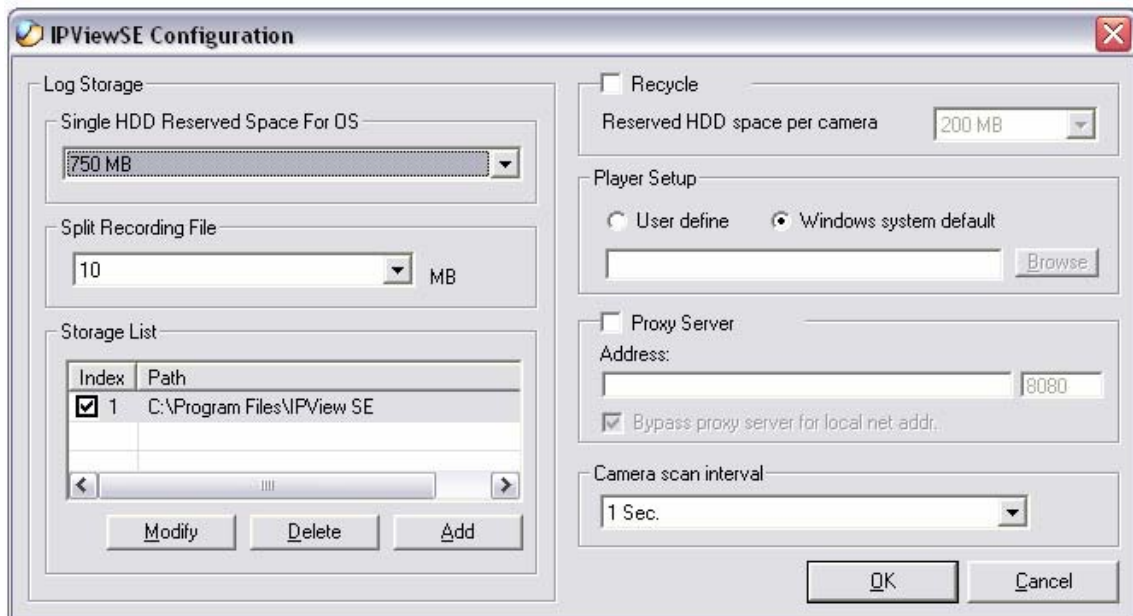


Step 3 Enable the **Second HTTP Port** and enter in the desired port for the camera in the **Port Number** field.

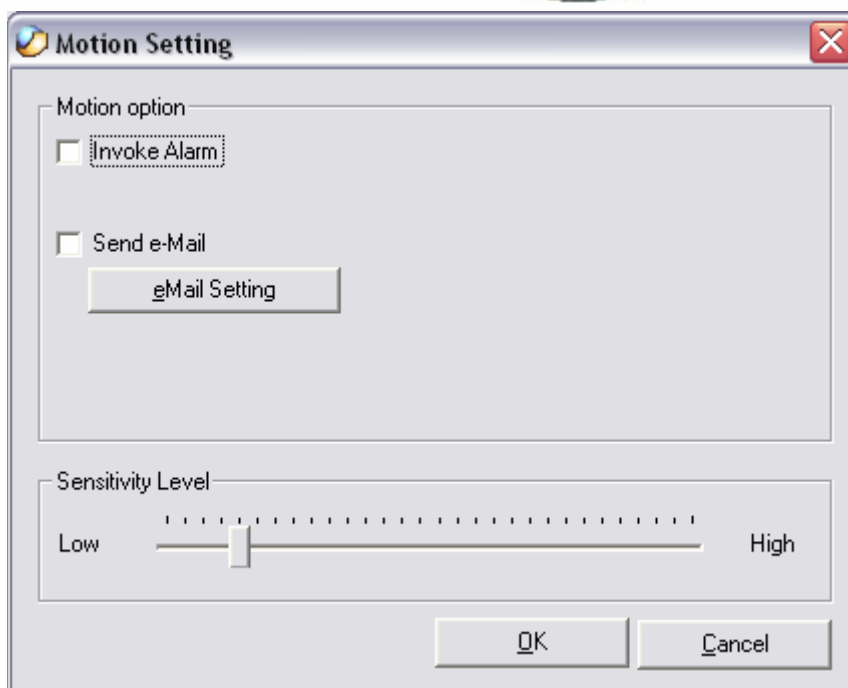
Q: How do I configure the camera to record motion?

Step 1 Open the IPView SE software.

Step 2 Click on the **System Configuration** button to configure options for recording.



Step 3 Click on the **Camera Configure** button then click the **Motion Settings** button for additional settings.



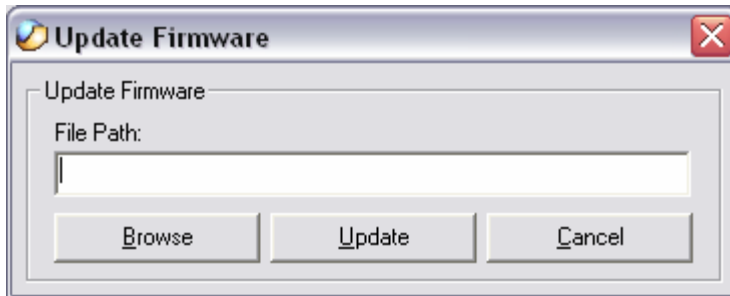
Step 5 Once the unit is set to the desired configuration you can start recording by clicking on the **Motion Recording** button.



Q: How do I upgrade the firmware of my camera?

Step 1 Click on the **Camera Configure** button then click the **Update Firmware** button for additional settings.





Step 2 Click **Browse** and locate the firmware file then click **Update**.

Q: Can my TV-IP400(w) series camera use Power over Ethernet?

A: No, it does not support Power over Ethernet

Q: How can I email snapshots based on motion from my camera?

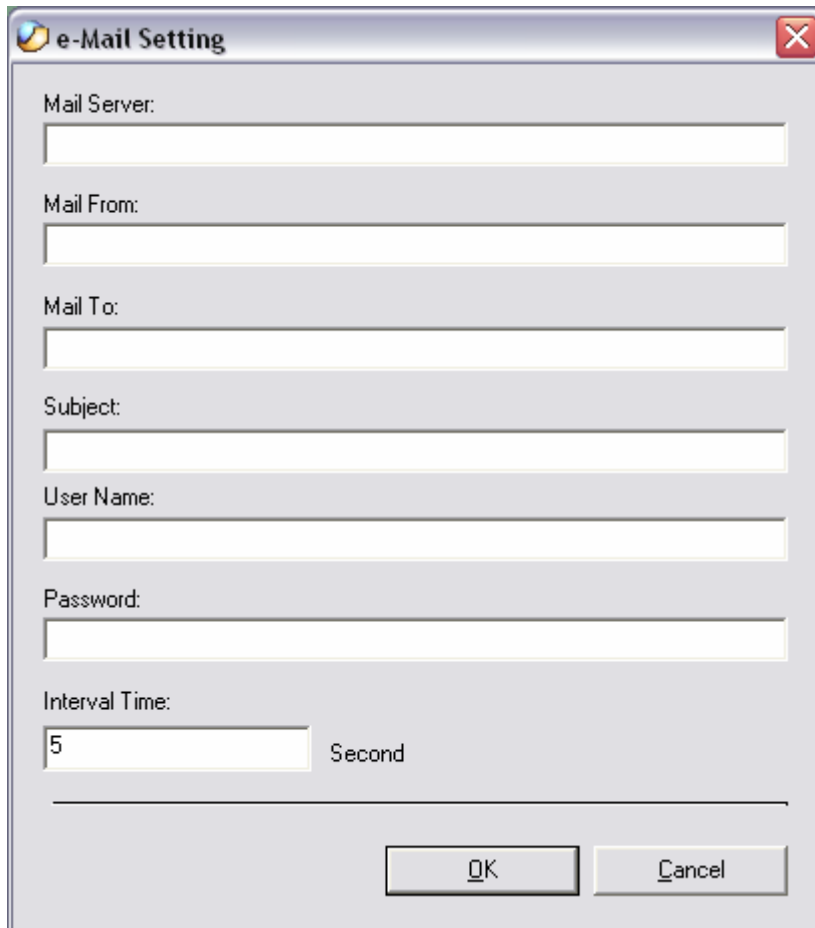
A:

Step 1 Open the IPView SE software.

Step 2 Click on the **Camera Configure** button then click the **Motion Settings** button for additional settings.



Step 3 Enter the information in the appropriate fields and click **OK**.



The image shows a dialog box titled "e-Mail Setting" with a close button (X) in the top right corner. The dialog box contains several input fields and a button:

- Mail Server:
- Mail From:
- Mail To:
- Subject:
- User Name:
- Password:
- Interval Time: Second

At the bottom of the dialog box, there are two buttons: "OK" and "Cancel".

Q: How do I configure my TV-IP400(w) series cameras to upload snapshots to an FTP server?

Step 1 Open your web browser and type the IP address of the TV-IP400(w) in the address bar. The default IP address is 192.168.0.20.

Step 2 Click on **Configuration** at the top of the page then click on **Upload** on the left hand side. Enter your FTP server information and click **Save**.

Cam2 CS-8A14E9

TRENDnet TV-IP400W
TRENWare, USA

Management Configuration Tools Help Home

Configuration

- System
- Video
- Wireless
- Network
- User
- DateTime
- Upload**
- E-mail

FTP Server

Host Address : test.ftp.com

Port Number : 21 (Default is 21)

User Name : test

Password : ●●●●

Directory Path : /test

Passive Mode : Yes No

Time Schedule

Time Schedule : Enable upload video to FTP server

Always

Schedule

Day : Mon Tue Wed Thu Fri Sat Sun

Time Period : Start : 12:01:01 (Example : 06:30:00)
Stop : 23:59:59 (Example : 22:30:00)

Video Frequency : 1 Frames/Second
 1 Seconds/Frame

Base File Name : test

File : Overwrite
 Date/Time Suffix
 Sequence Number Suffix Up to 1024

Manual Operation

Manual Operation : Enable upload video to FTP server

Base File Name : _____

File : Overwrite
 Date/Time Suffix
 Sequence Number Suffix Up to 1024

Save Cancel

Note: For manual uploading view the image of the camera and click ON next to Upload Video.



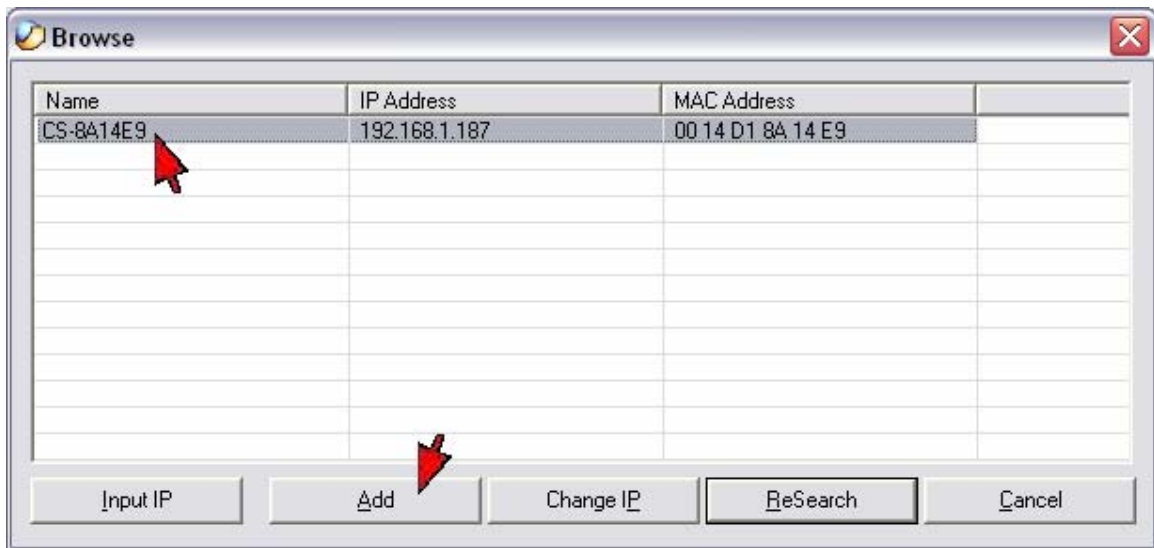
Q: How do I view the TV-IP400(w)'s image using IPView SE?

Step 1 Start the IPView SE application by clicking on Start>All Programs>IPView SE>IPView SE.

Step 2 Click on **Camera 1**.



Step 3 The IPView SE application will detect your camera. Highlight the camera by single left clicking on it and then click **Add**.



Q: Which web browsers will allow me to view the video from a TV-IP400(w)?

A: Internet Explorer (5.0 or above) or Netscape Navigator (6.0 or above)

Q: What are the minimum system requirements for the IPView SE software?

A:

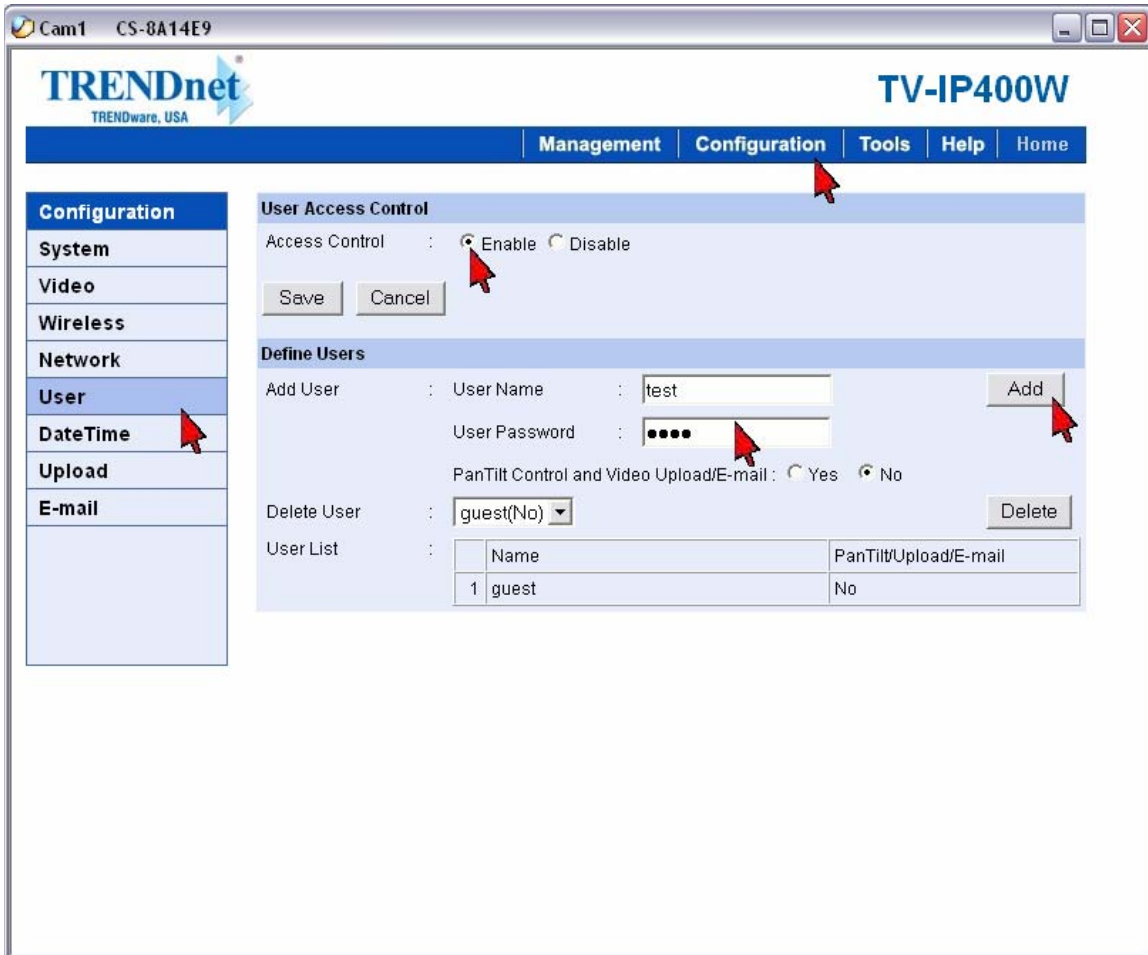
Memory Size	128M (256 Recommended)
Pentium III, 450 MHz or above	
VGA card resolution: 800 x 600 or above	

Q: How do I add user accounts to my TV-IP400(w)?

Step 1 Open your web browser and type the IP address of the TV-IP400(w) in the address bar. The default IP address is 192.168.0.20.

Step 2 Click on **Configuration** at the top of the page then click on **User** on the left hand side. Enable the Access Control and enter in the desired usernames and passwords. Click **Add** to add the user.

Note: You can enable pan and tilt controls as well for individual users.



Cam1 CS-8A14E9

TRENDnet TV-IP400W

Management Configuration Tools Help Home

Configuration

System

Video

Wireless

Network

User

DateTime

Upload

E-mail

User Access Control

Access Control : Enable Disable

Save Cancel

Define Users

Add User : User Name : test Add

User Password :

PanTilt Control and Video Upload/E-mail : Yes No

Delete User : guest(No) Delete

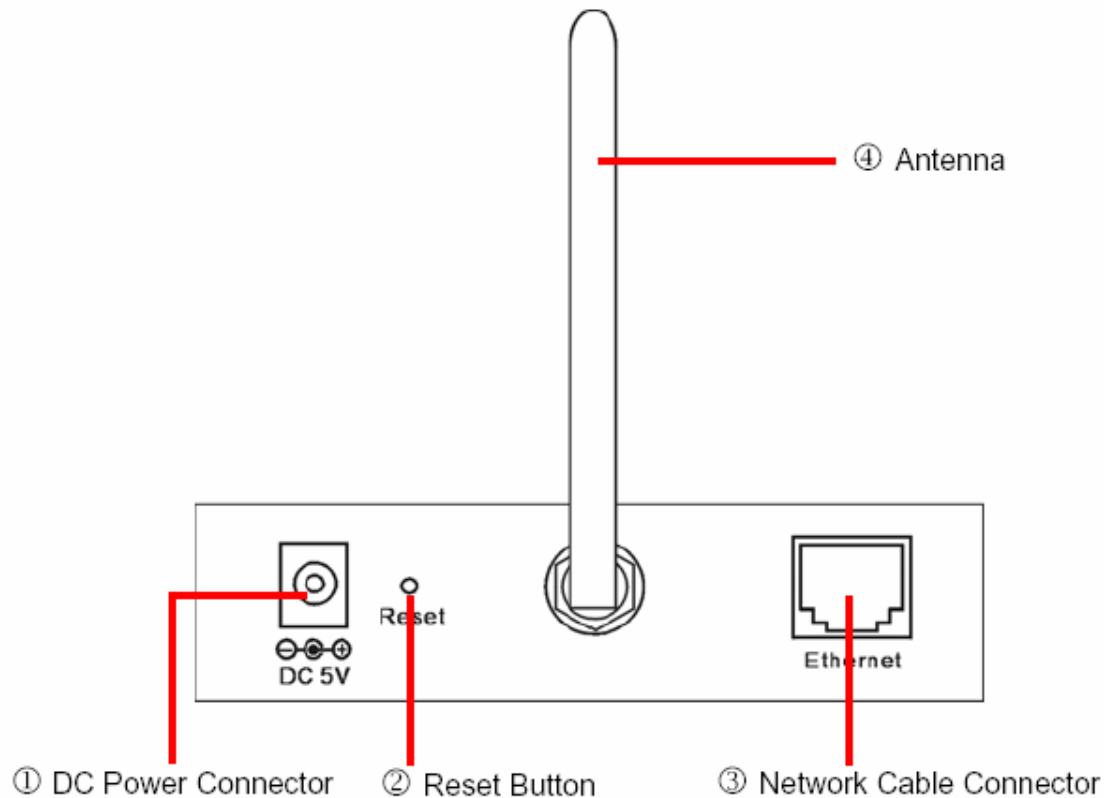
User List :

	Name	PanTilt/Upload/E-mail
1	guest	No

Q: How do I reset my TV-IP400(w) back to factory defaults?

A:

Step 1 Locate the reset button on the back of the unit



Step 2 Disconnect the power supply.

Step 3 Press and hold in the reset button.

Step 4 While holding in the reset button; reconnect the power supply.

Step 5 Continue to hold in the reset button for approximately 10 seconds to restore the default settings.

Q: What do the LED's on the front of the camera mean?

A:

Front Panel

There are two LED indicators on the front panel of the camera:
Power LED and **Link LED**.



1. Power LED

The Power LED is positioned on the right side of the two LEDs. A steady **BLUE** light confirms that the camera is powered on.

2. Link LED

The Link LED is positioned on the left side of the two LEDs. A steady **ORANGE** light confirms that the camera has good connection to LAN connectivity.

Dependent on the data traffic, the LED will begin to flash to indicate that the camera is receiving/sending data from/to the network.

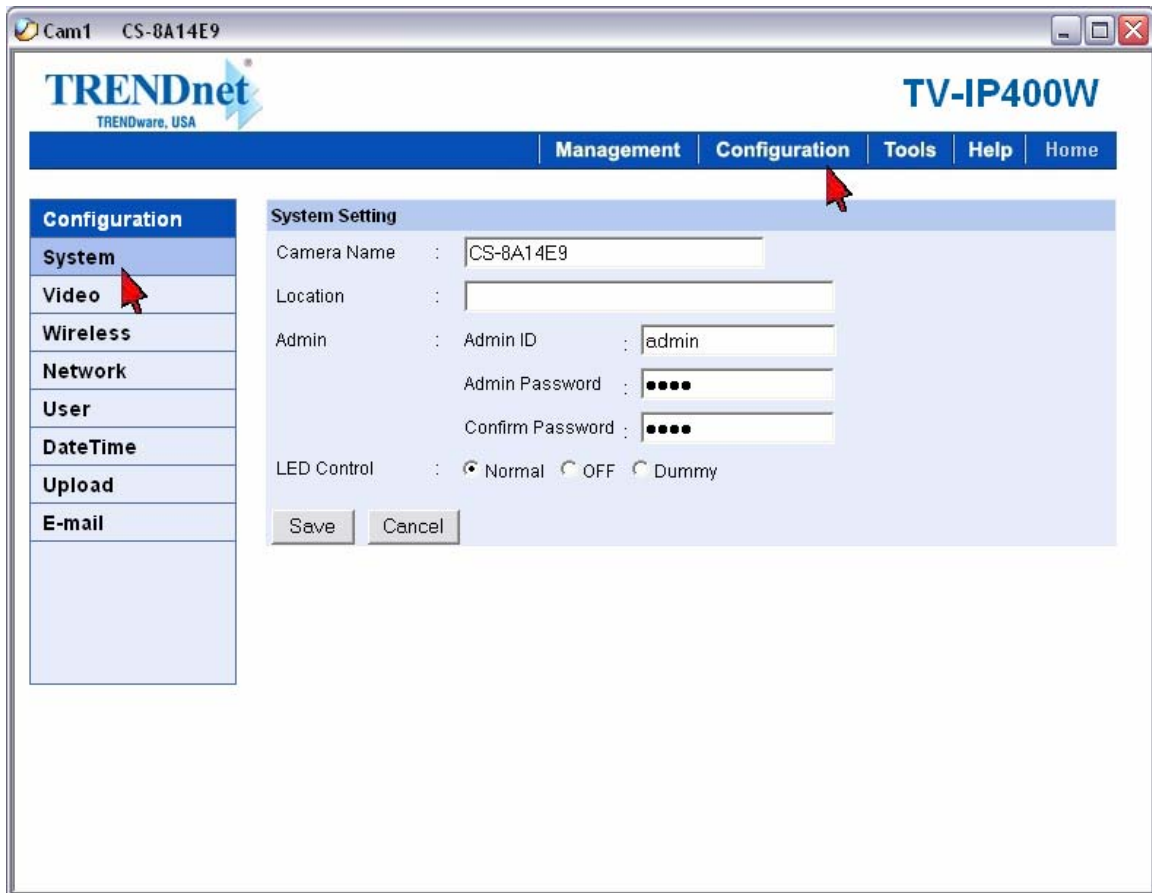
Q: How do I set a password on my TV-IP400(w)?

Step 1 Open your web browser and type the IP address of the TV-IP400(w) in the address bar. The default IP address is 192.168.0.20.

Step 2 Click **System Administration**.



Step 3 Click **Configuration** at the top of the page then click **System** on the left hand side. Enter in the desired username and password in the **Admin ID** and **Admin Password** fields. Click **Save**.



Q: How do I connect my TV-IP400(w) to my wireless network?

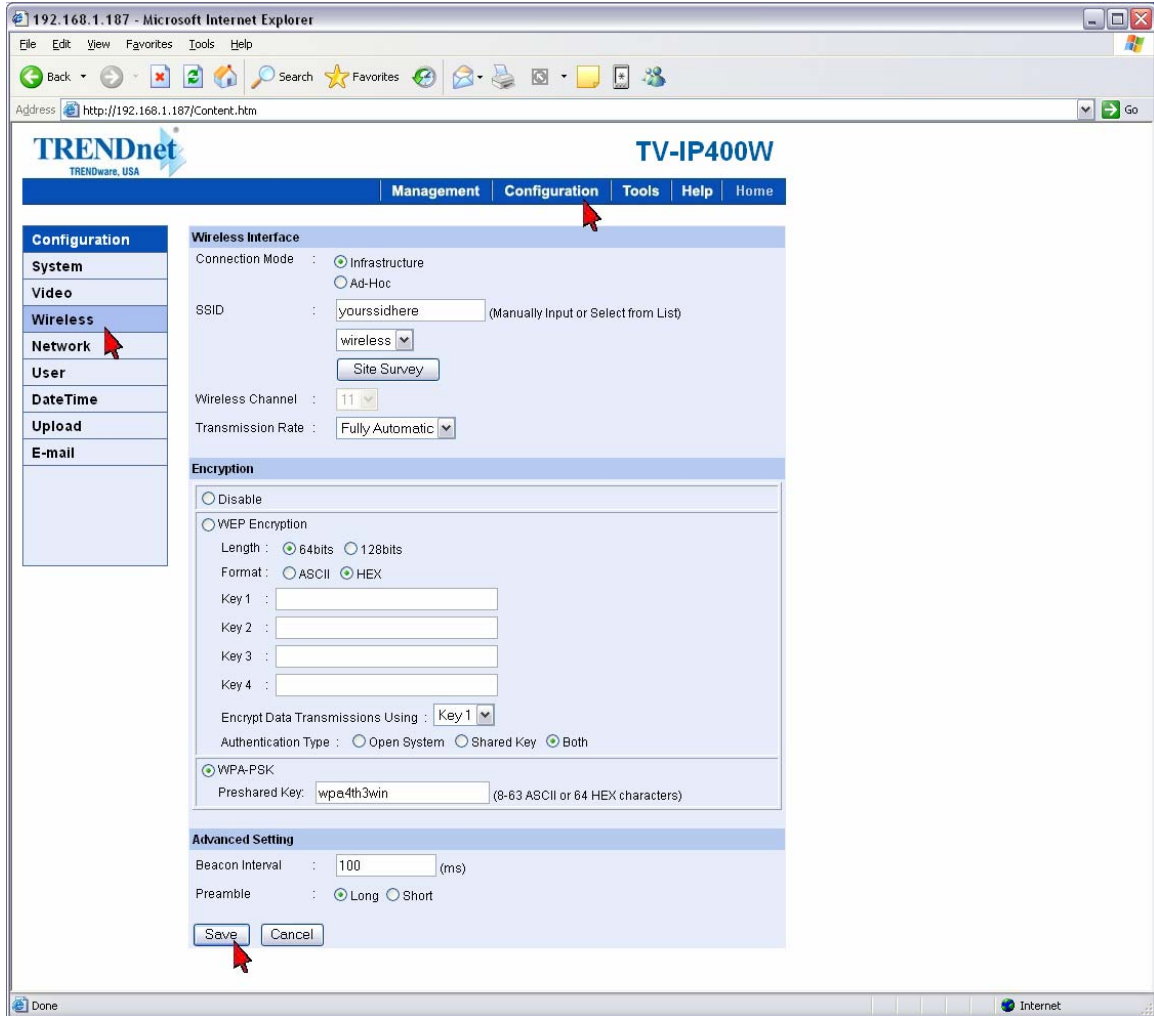
A:

Step 1 Open your web browser and type the IP address of the TV-IP400(w) in the address bar. The default IP address is 192.168.0.20.

Step 2 Click **System Administration**.



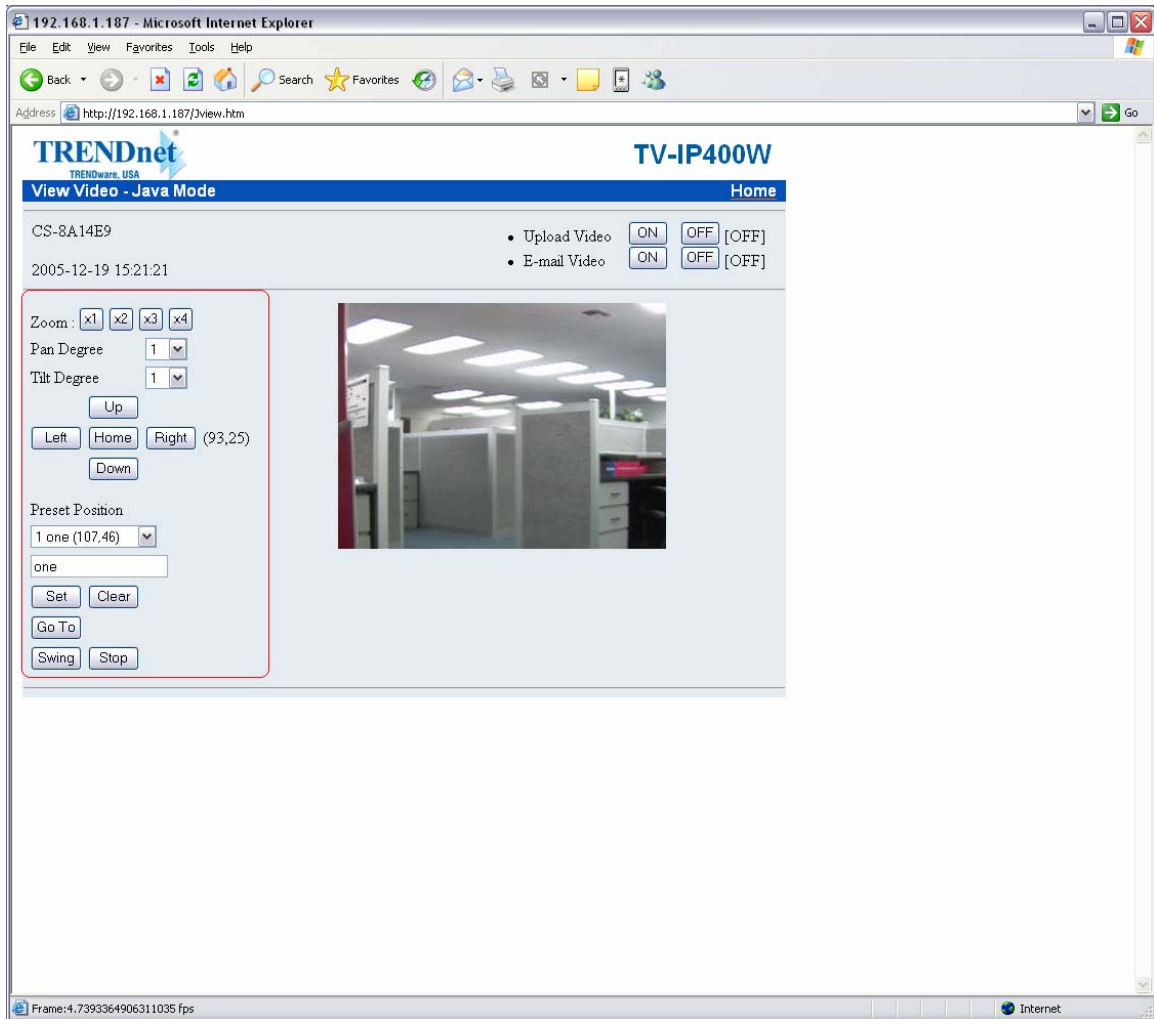
Step 3 Click **Configuration** at the top of the page then click **Wireless** on the left hand side. Enter in your wireless settings to match your existing wireless access point then click **Save**.



Q: How do I control the pan and tilt of the TV-IP400(w)?

A:

From the web-based interface when viewing the image through Java or Active X the controls are on the left hand side.



The screenshot shows a Microsoft Internet Explorer browser window displaying the web interface for a TRENDnet TV-IP400W camera. The address bar shows the URL `http://192.168.1.187/3view.htm`. The page title is "View Video - Java Mode". The interface includes the following elements:

- Navigation:** "View Video - Java Mode" and "Home" links.
- Device Information:** "CS-8A14E9" and "2005-12-19 15:21:21".
- Settings:** "Upload Video" and "E-mail Video" options, each with "ON" and "OFF" buttons.
- Control Panel (highlighted with a red box):**
 - Zoom:** Buttons for x1, x2, x3, and x4.
 - Pan/Tilt:** "Pan Degree" and "Tilt Degree" dropdown menus (both set to 1), "Up", "Down", "Left", "Home", and "Right" buttons.
 - Preset Position:** A dropdown menu set to "1 one (107,46)", a text input field containing "one", and "Set" and "Clear" buttons.
 - Other:** "Go To", "Swing", and "Stop" buttons.
- Video Feed:** A central window showing a live video stream of an office interior.

The status bar at the bottom indicates "Frame:4, 7393364906311035 fps" and "Internet".

You can also control the pan and tilt through the IPView SE application.

