

F.A.Q for TPE-S88

Q: What is the default IP address of the TPE-S88?

A: The default IP address is <http://192.168.0.1>

Q: What is the default password?

A: The default password is admin.

Q: How do I configure the switch through the web-based configuration?

A: Log into the switch by entering the default IP address into the browser. The default IP address is <http://192.168.0.1> and the password is admin.

Q: How do I reset my switch to factory defaults?

A: Locate the reset button on the back of the switch. Press and hold it in for approximately 15 seconds.

Q: Why doesn't my Cisco 7940G/7960G IP Phone power on when connected to my TPE-S88?

The Cisco 7940G and 7960G are pre-802.3af POE devices. They will not be able to get power from the POE switch.

The following link is provided for reference and may provide further information regarding the incompatibility between 802.3af compliant devices and Cisco phones.

This article is not provided by Cisco nor endorsed by TRENDnet: <http://www.voip-info.org/wiki-Cisco+POE>

Note: This may include other Cisco IP Phones that are not 802.3af compliant. For further information on your Cisco IP Phone, please contact Cisco.

Q: Why are my ping requests slower when using TRENDnet Web SMART Switches?

A: Since Web Smart switches are not as robust in features as fully managed switches they have a slower CPU. Therefore, depending on what processes the Web Smart switch is currently running, the ping response time will be varied and longer.

Q: Which TRENDnet products support the 802.3af protocol?

A: Currently only the TEW-453APB.

Q: What TREND net products

A: Using the TPE-102S the following TREND net products are compatible with POE

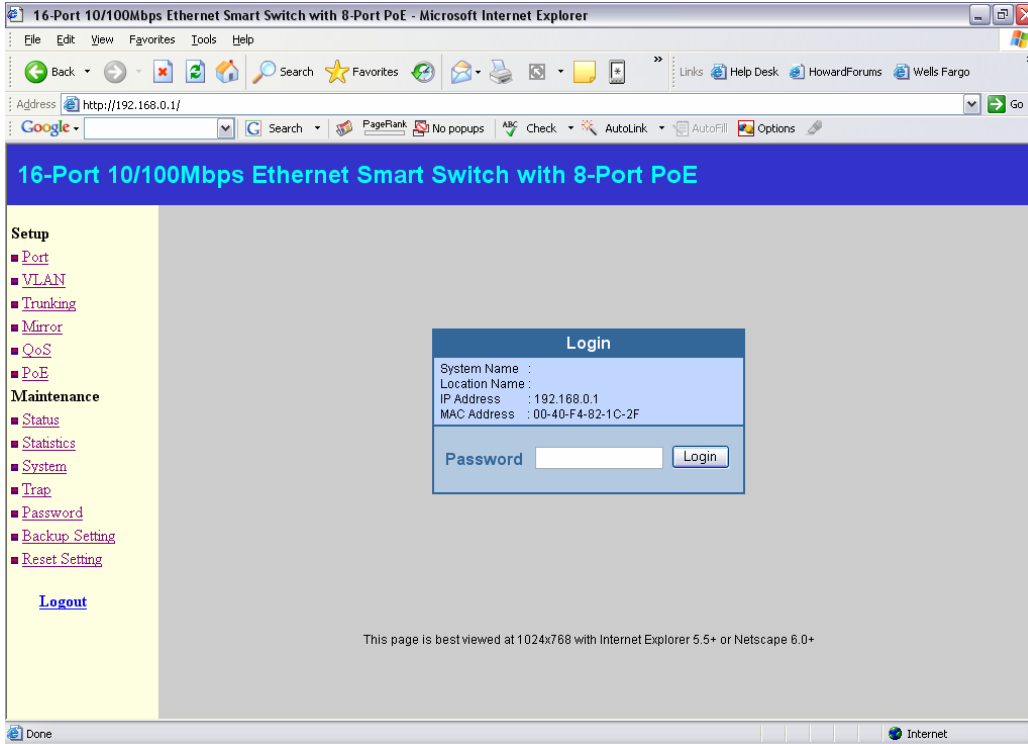
TREND net Products	Compatibility
TEG-S80TXE	Yes (5V 2.4A)
TEW-430APB	Yes (5V 2.1A)
TEW-432BRP	Yes (5V 2.5A)
TEW-450APB	Yes (5V, 2A)
TEW-510APB	Yes (5V, 2.5A)
TEW-511BRP	Yes (5V 2.5A)
TEW-610APB	Yes (5V, 2A)
TEW-611BRP	Yes (5V, 2A)
TE100-P1P	Yes (5V, 2.5A)
TE100-P1U	Yes (5V, 2.5A)
TE100-PS3plus	Yes (5V, 1.6A)
TE100-P21	Yes (5V, 2.5A)
TEW-P1PG	Yes (5V 2.5A)
TEW-P1UG	Yes (5V 2.5A)
TEW-PS1U	Yes (5V 2.5A)
TEW-P21G	Yes (5V, 2.5A)
TV-IP100	Yes (5V, 2.5A)
TV-IP100W	Yes (5V, 2.5A)
TV-IP200	Yes (5V, 2.5A)
TV-IP200W	Yes (5V, 2.5A)
TS-U100	Yes (5V, 2.5A)
TS-U200	Yes (5V, 2.5A)

Q: How do I setup VLAN ´s on the TPE-S88?

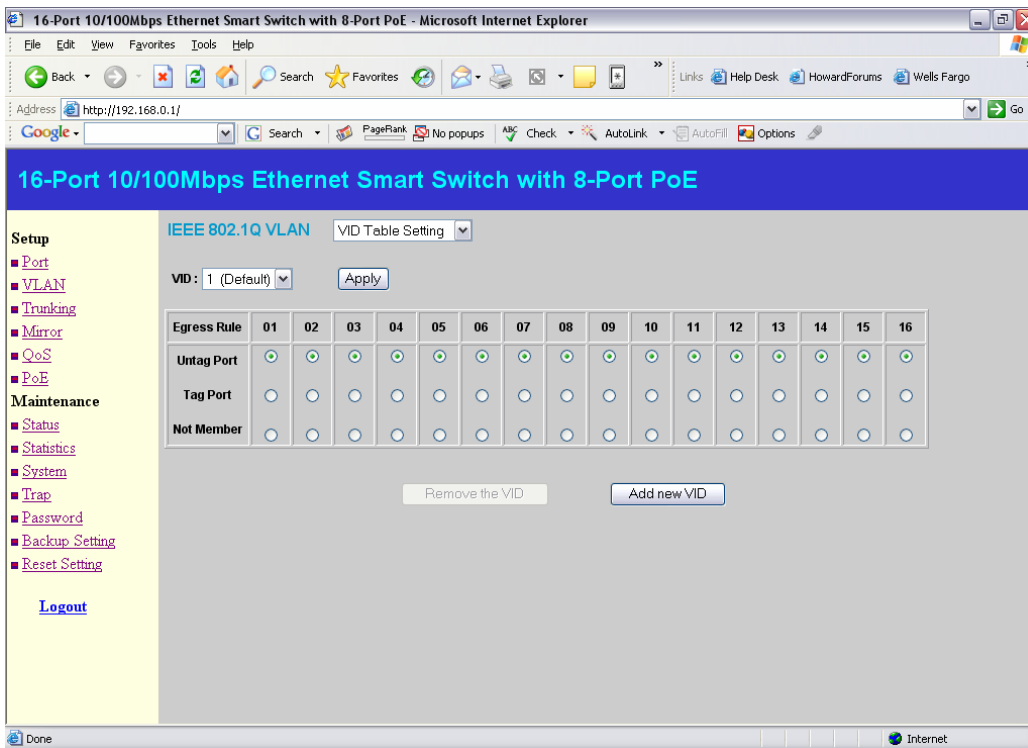
A:

In this example two VLAN ´s will be created. The VLAN ´s will not be able to access each other, but will be able to get out to a gateway. The gateway is connected to port 1.

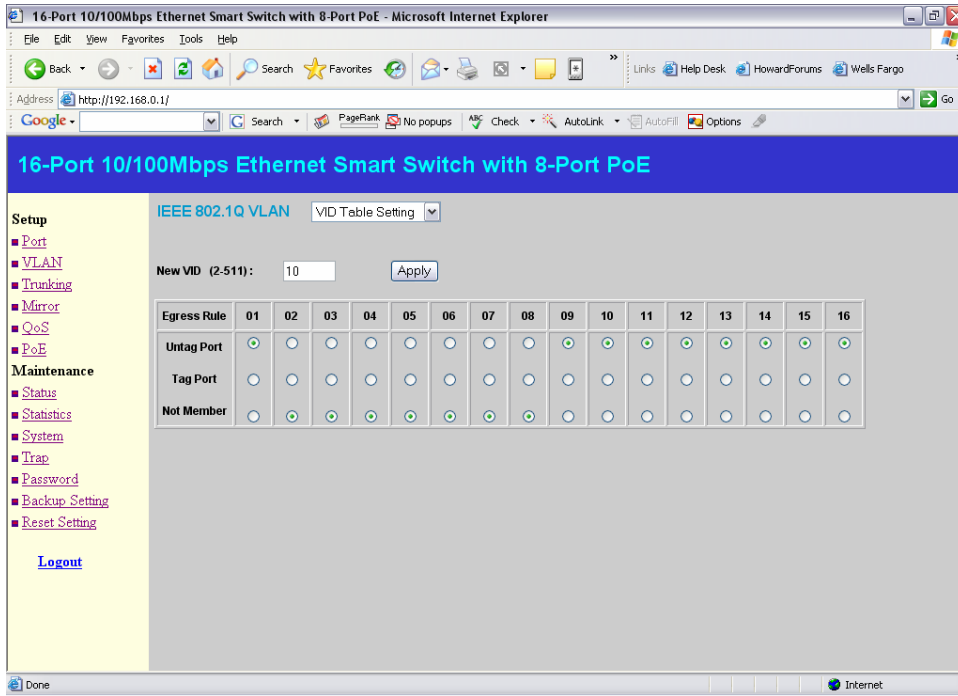
Step 1 Open a web browser and log into the switch (192.168.0.1 by default). Enter the password (admin by default) then hit Login.



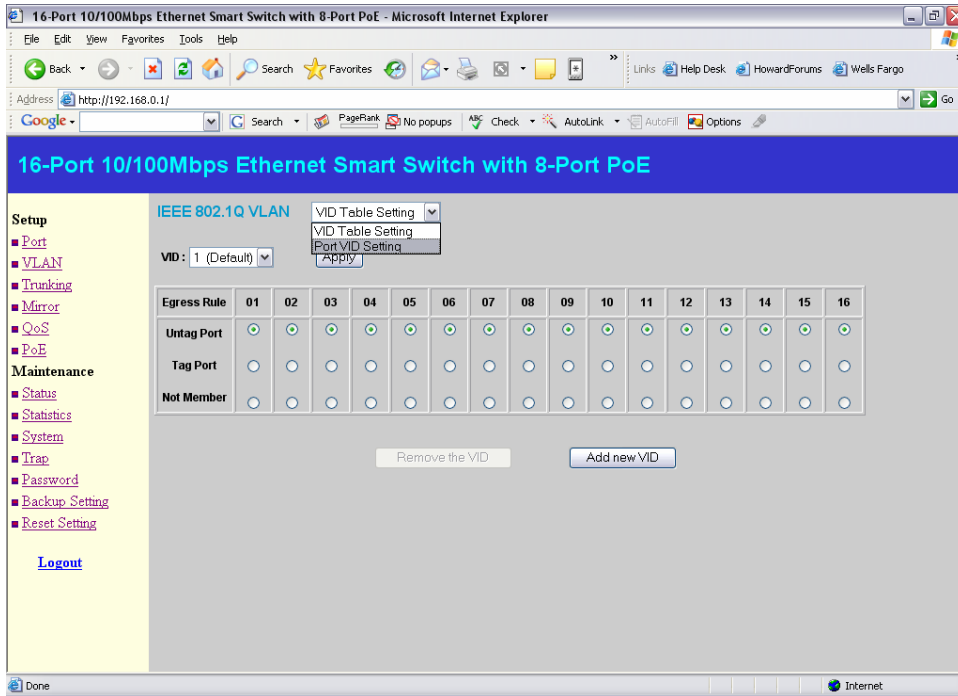
Step 2 Click on VLAN on the left hand side then click Add new VID.



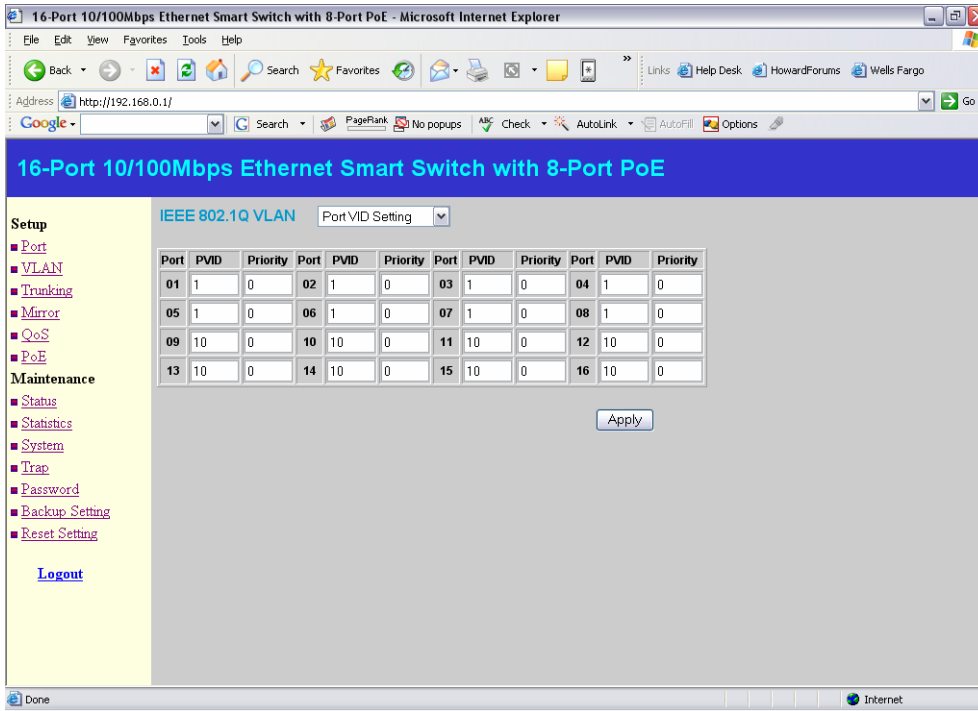
Step 3 Create a new VID and add Untagged Member Ports.



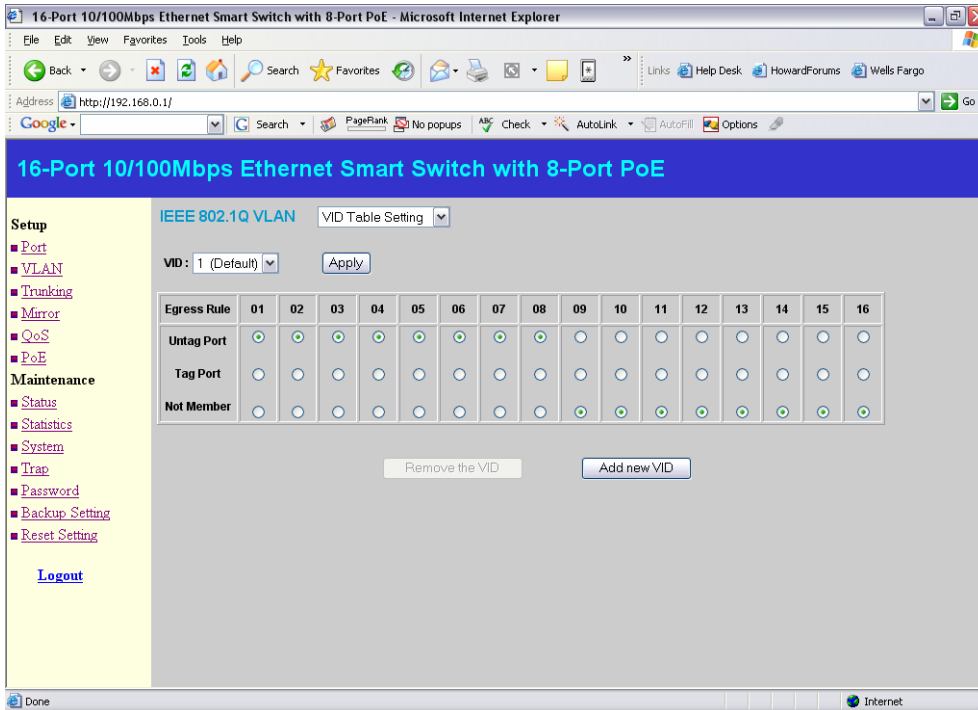
Step 4 Go back to the VLAN menu and select Port VID Settings.



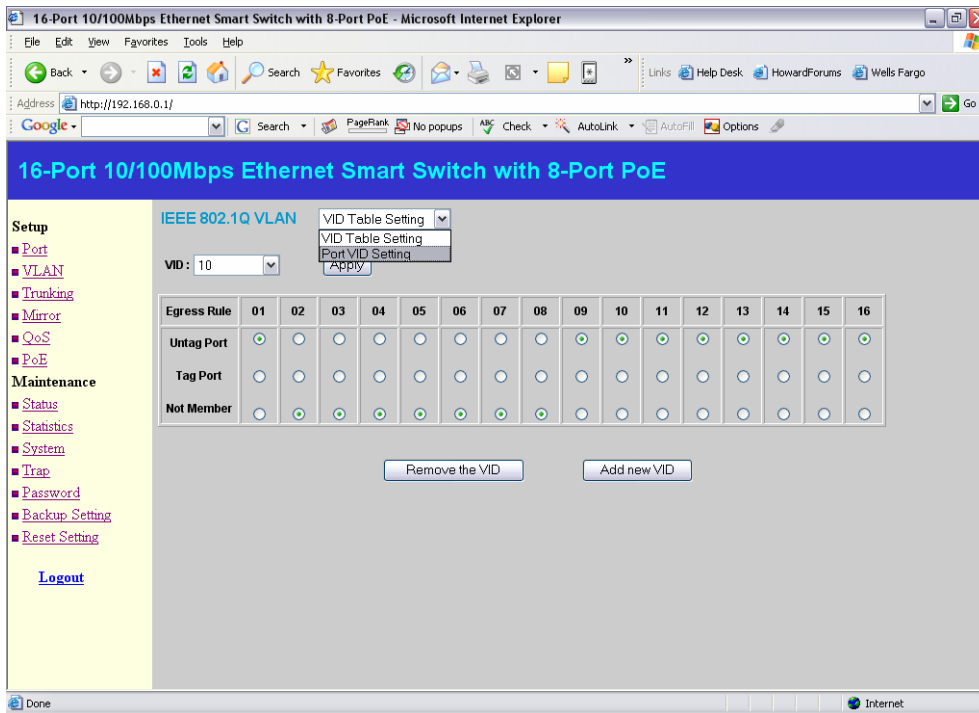
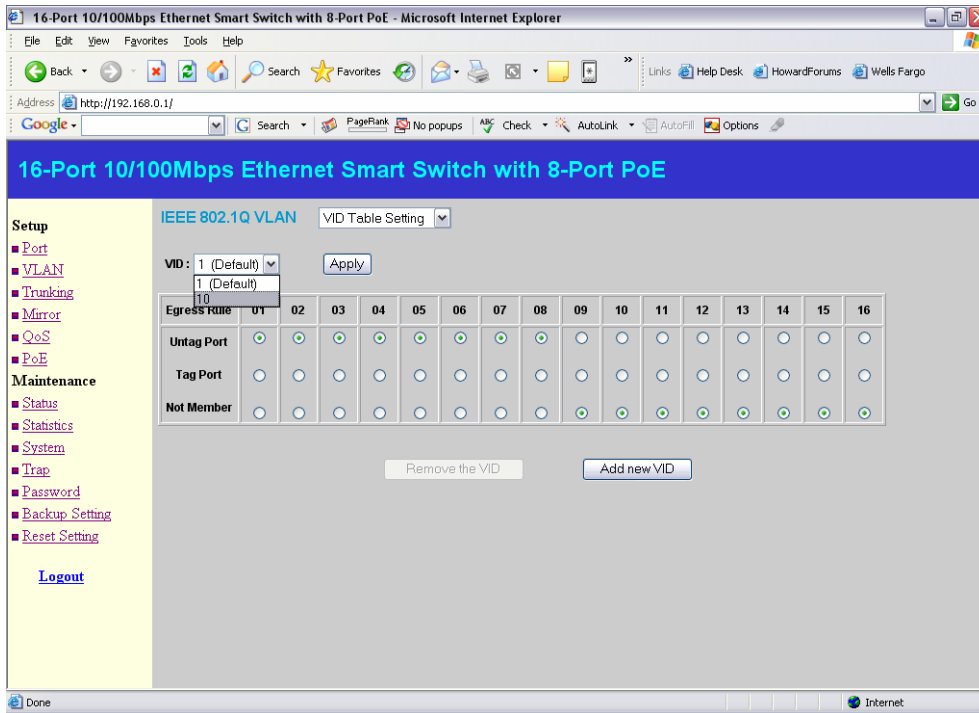
Step 5 Change the PVID of the ports in the created VLAN and click Apply.



Step 6 Remove the ports from the second VLAN and hit Apply.



Step 7 Select VID 10 then select Port VID Settings.



Step 8 Change the PVID of the ports in the second VLAN and hit Apply.

16-Port 10/100Mbps Ethernet Smart Switch with 8-Port PoE - Microsoft Internet Explorer

Address: http://192.168.0.1/

16-Port 10/100Mbps Ethernet Smart Switch with 8-Port PoE

IEEE 802.1Q VLAN Port VID Setting

Port	PVID	Priority	Port	PVID	Priority	Port	PVID	Priority	Port	PVID	Priority
01	10	0	02	1	0	03	1	0	04	1	0
05	1	0	06	1	0	07	1	0	08	1	0
09	10	0	10	10	0	11	10	0	12	10	0
13	10	0	14	10	0	15	10	0	16	10	0

[Apply](#)

Setup

- Port
- VLAN
- Trunking
- Mirror
- QoS
- PoE

Maintenance

- Status
- Statistics
- System
- Trap
- Password
- Backup Setting
- Reset Setting

[Logout](#)

Opening page http://192.168.0.1/cgi_pvid?tag_type=1...