

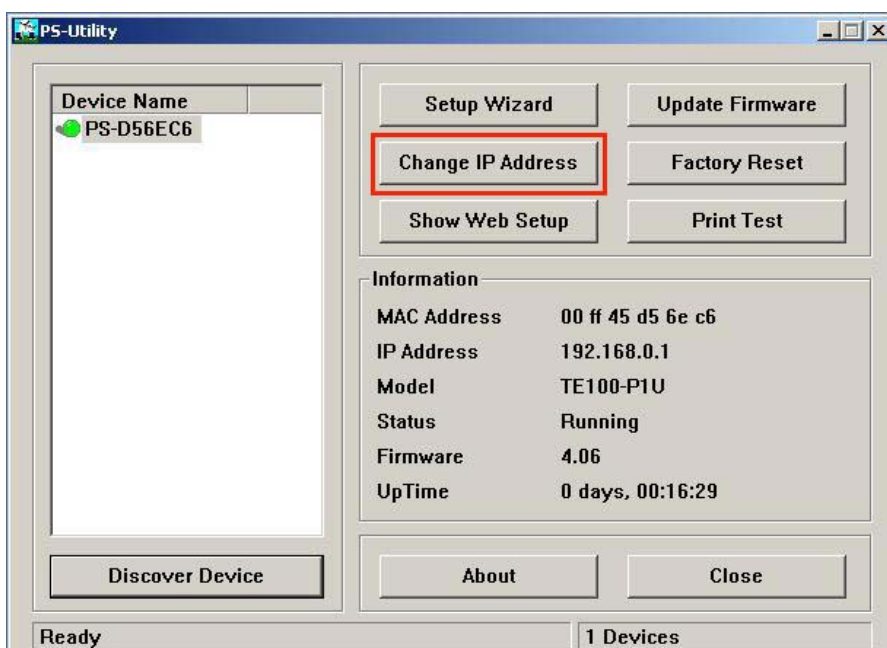
## **F.A.Q for TEW-P21**

### **Q: Why doesn't PS-Utility detect my print server?**

If you are using Windows XP you will have to disable the built in firewall. But for all operating systems you have to disable any other form of firewall software such as Norton Internet Security, Black Ice, and ZoneAlarm.

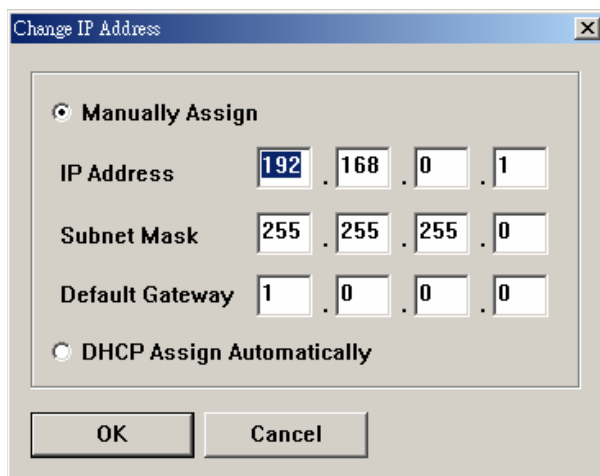
### **Q: How do I change the IP address of my print server?**

**Step 1** Open up the PS-Utility and click on Change IP Address.



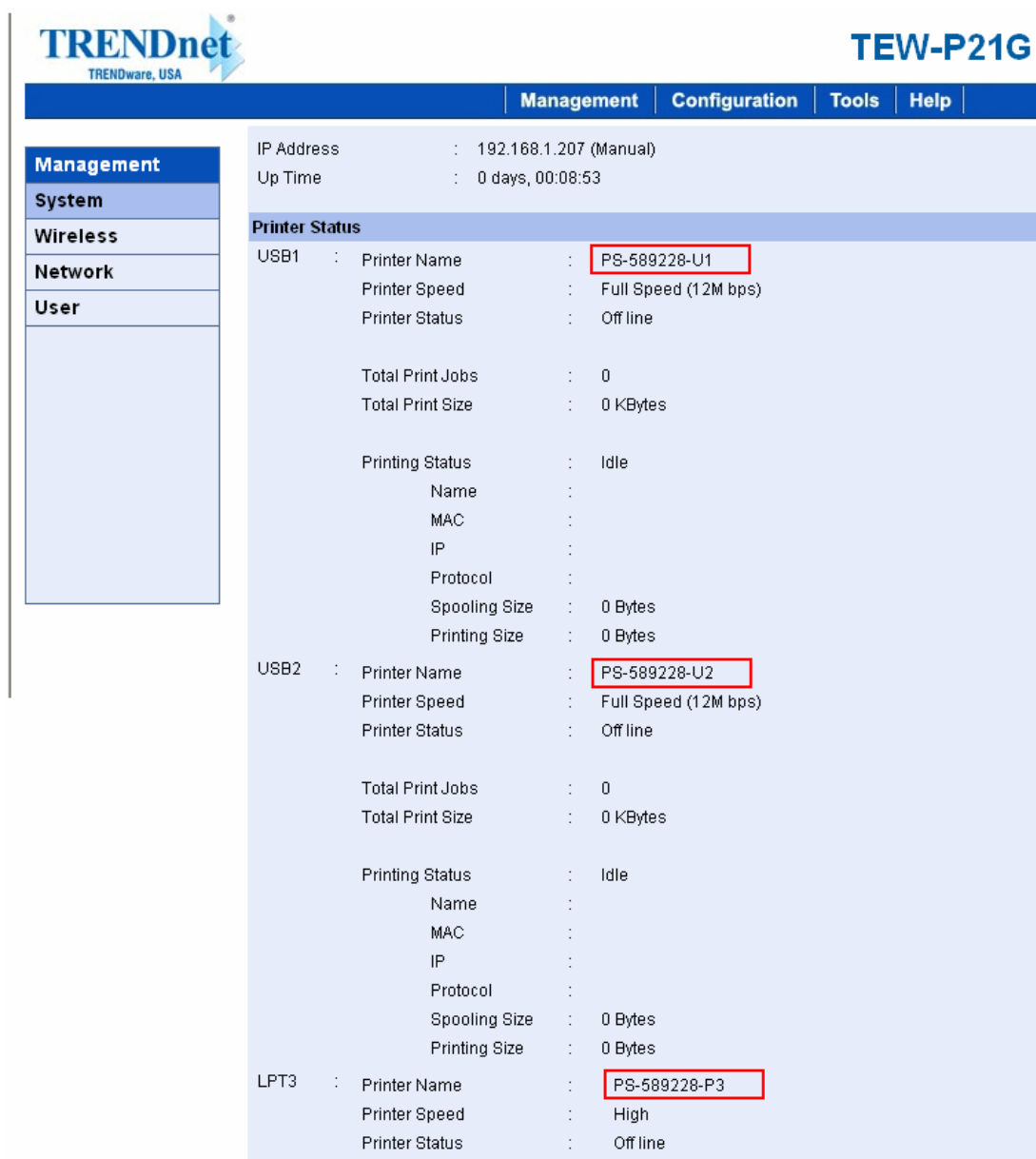
### **Step 2 Change IP Address:**

Click this button to bring up the following dialog box, allowing you to change the IP Address. In this dialog box, you can select either *Manually Assign* or *DHCP Assign Automatically*. When completed, click **OK**.



**Q: How do I find the Port Name of the Print Server?***Mar. 17, 2006*

First, launch your web browser (such as the Internet Explorer 6.0 used in this manual). Then, type ***http://192.168.0.1*** (the default IP address) in the Address bar and press [Enter] to enter the Management screen of the Configuration Utility. Or use the IP address that you manually assigned to the Print Server. Click on System and the Printer Name is the PS-xxxxxx-P1, x being the actual number listed in the Printer Name box. Please write this information down on a piece of paper for future reference.



**TRENDnet**  
TRENDware, USA

**TEW-P21G**

Management Configuration Tools Help

**Management**

System

Wireless

Network

User

IP Address : 192.168.1.207 (Manual)

Up Time : 0 days, 00:08:53

**Printer Status**

USB1 : Printer Name : PS-589228-U1

Printer Speed : Full Speed (12M bps)

Printer Status : Off line

Total Print Jobs : 0

Total Print Size : 0 KBytes

Printing Status : Idle

Name :

MAC :

IP :

Protocol :

Spooling Size : 0 Bytes

Printing Size : 0 Bytes

USB2 : Printer Name : PS-589228-U2

Printer Speed : Full Speed (12M bps)

Printer Status : Off line

Total Print Jobs : 0

Total Print Size : 0 KBytes

Printing Status : Idle

Name :

MAC :

IP :

Protocol :

Spooling Size : 0 Bytes

Printing Size : 0 Bytes

LPT3 : Printer Name : PS-589228-P3

Printer Speed : High

Printer Status : Off line

**Q: How do I make it Wireless?**

**Step 1** First you will need to know the SSID of your wireless router or access point, along with the Channel. If you are using any type of wireless security like WEP, you will need to know the key values.

**Step 2** Launch your web browser (such as the Internet Explorer 6.0 used in this manual). Then, type ***http://192.168.0.1*** (the default IP address) in the Address bar and press [Enter] to enter the Management screen of the Configuration Utility. Or use the IP address that you manually assigned to the Print Server.

**Step 3** Click on Configuration on the top Menu bar and click on Wireless on the side bar.

**TRENDnet**  
TRENDware, USA

**TEW-P21G**

Management | Configuration | Tools | Help

**Configuration**

System  
Wireless  
Network  
User  
E-mail  
SNMP

**Wireless Interface**

Connection Mode : ☒ Infrastructure ☐ Ad-Hoc

SSID : p21g (Manually Input or Select from List)  
p21g  
Site Survey

Wireless Channel : 1

Transmission Rate : 54 Mb

**WEP Encryption**

WEP Encryption : ☐ Disable ☒ 64 bits ☐ 128 bits

WEP Key Format : ☐ ASCII ☒ HEX

Key 1 : ••••••••

Key 2 :

Key 3 :

Key 4 :

Encrypt Data Transmissions Using : Key 1

**Advanced Setting**

Beacon Interval : 100 (ms)

Preamble : ☒ Long ☐ Short

Authentication Type : ☐ Open System ☐ Shared Key ☒ Both

Save Cancel

You can now input the SSID and Channel or you can click on Site Survey. If you are using WEP Encryption, select the type of encryption and key in the value in Key 1 and Save. **Note: The Encryption method and key value is case sensitive and must match your router or access Point.**

**Step 4** Once you have saved the settings, unplug the Ethernet cable from the back of the Print Server and unplug the electrical power for 15 seconds then plug the power back in. Start the PS-

Utility and see if the utility finds the print server. If it does, then the unit is wireless at this point. If not, plug the Ethernet cable back into the print server and confirm the Wireless information.

**Q: How do I install my printer on Windows 95/98/ME?**

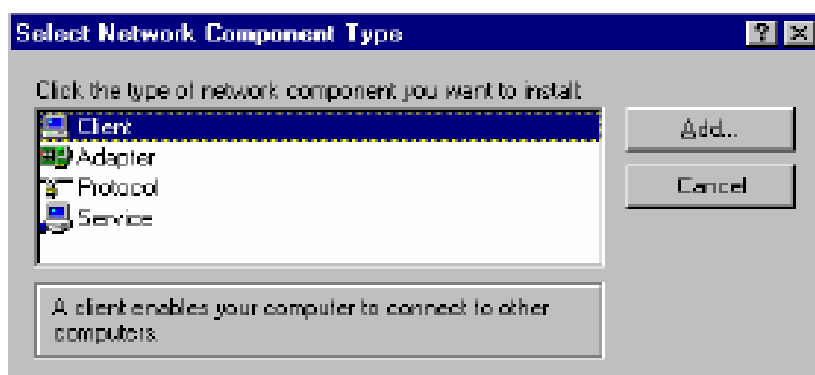
In Windows 98/Me you will need to install the **LPR** client.

For Windows 98/ME you will also need to know the port name that you are printing to (The Port Name is the PS-xxxxxx-P1. X being the actual number listed in the Port Name box).

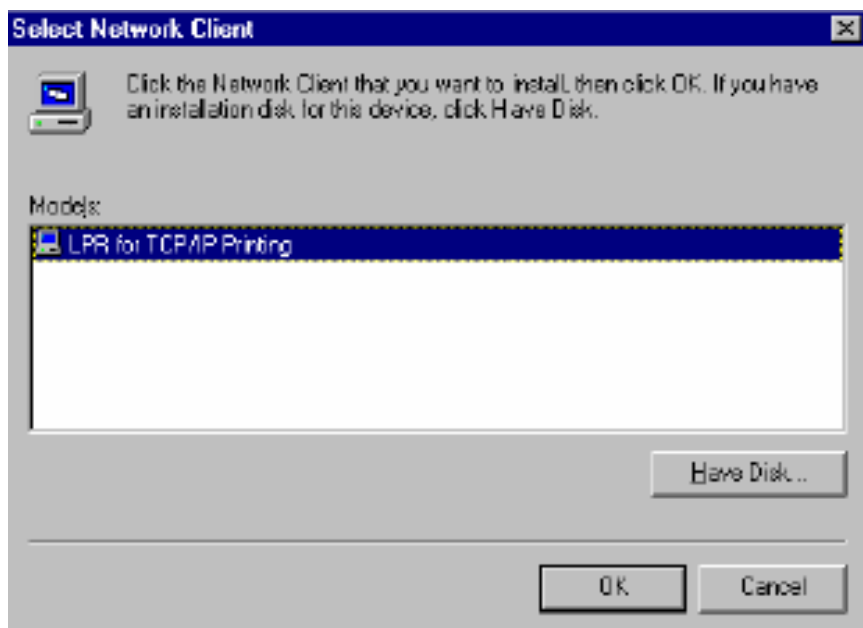
**Installing LPR:**

**Step 1** Once the file is downloaded and extracted, Go to **Start > Settings > Control Panel > double-click on Networks**. Click on **Add**

**Step 2** Highlight **Client** and click on **Add**.

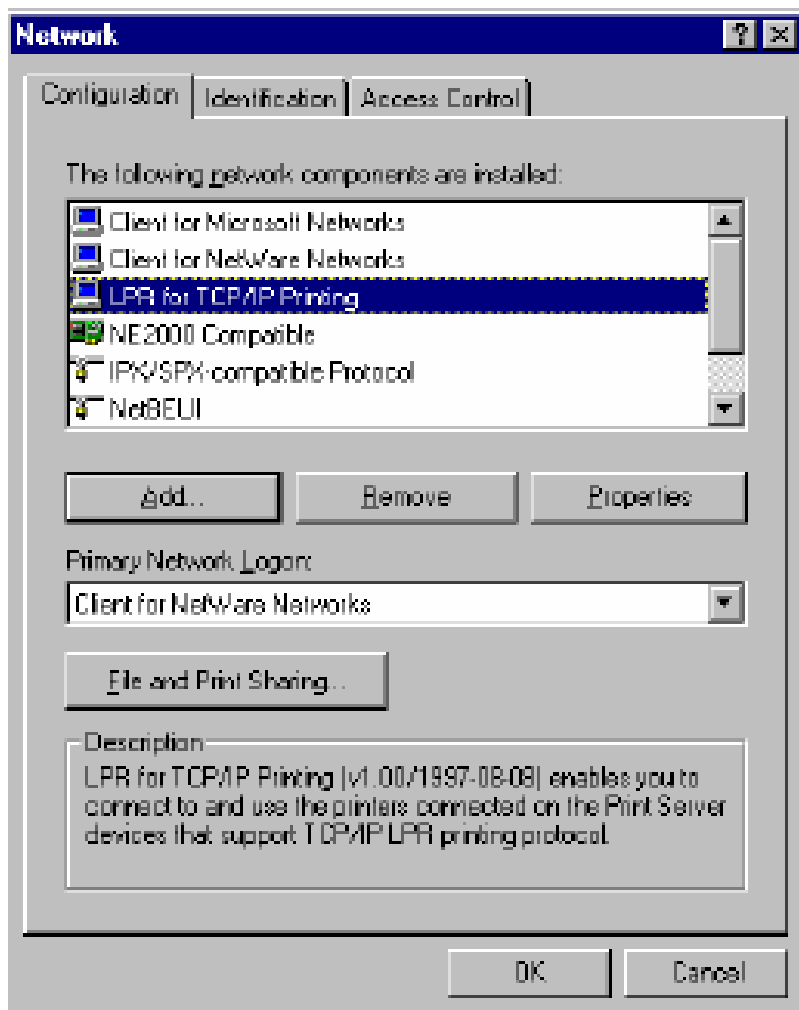


**Step 3** Click on **Have Disk > Browse**. Browse to the location of the extracted LPR Client.

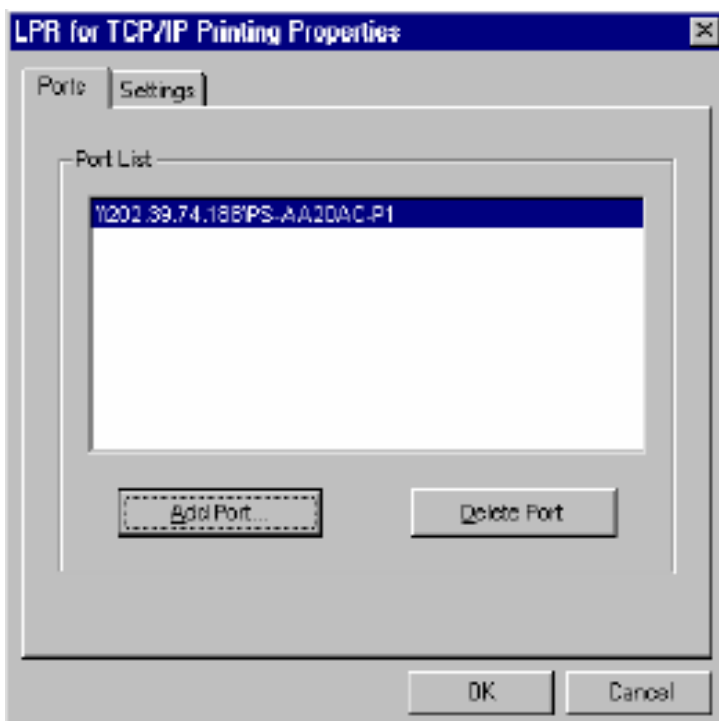


**Step 4** Click **OK** 3 times.

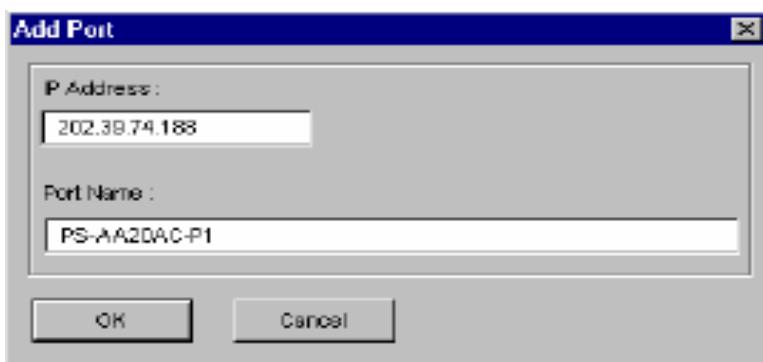
**Step 5** From the list highlight **LPR For TCP/IP** and click on **Properties**



**Step 6 Click on Add Port**



In the top field type in the IP address of your print server. In the bottom field type in the port name of your print server, the Port Name is the PS-xxxxxx-P1. X being the actual number listed in the Port Name box. Click on **OK**



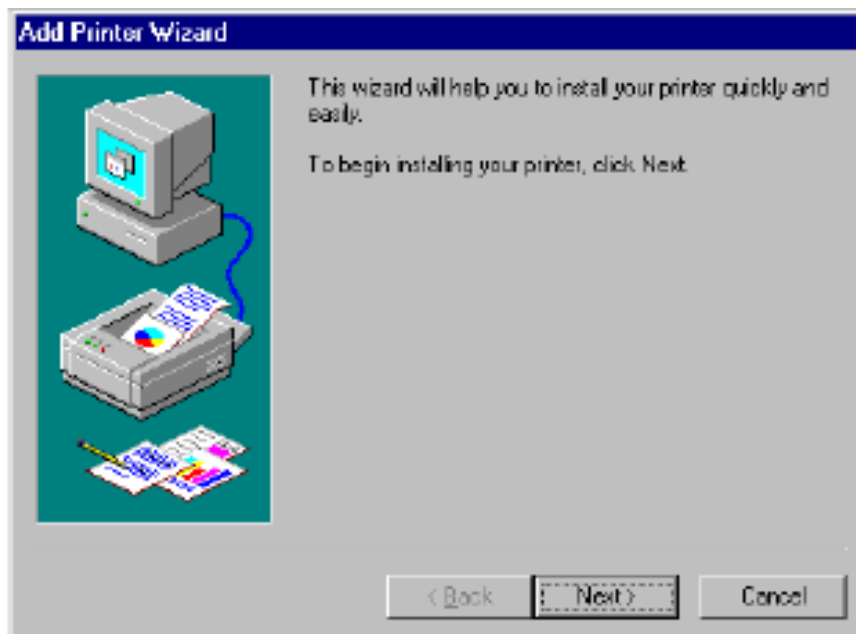
**Step 7** Click on **OK**. Windows will ask you to restart. Click **Yes**.

LPR is now properly installed on your computer.

### **Printer Installation**

**Step 1** Open your printers folder. Go to **Start > Settings > Printers**.

**Step 2** Double-click on the **Add Printer** icon which will launch the Add Printer Wizard.



Select **Network Printer** and click on **Next**.

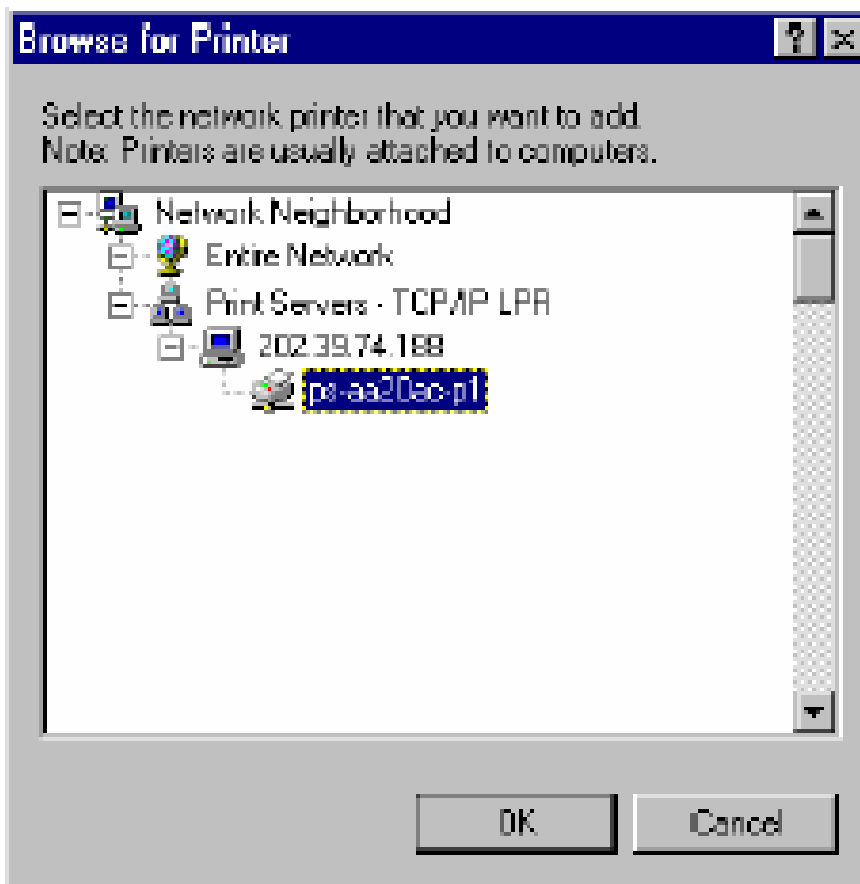


**Step 3** Click on the **Browse** button and browse to the print server.





Highlight the Print Server and click on **OK** to return to the Add Printer Wizard.



Click on **Next**. If you are unable to do this you can manually enter the Print Server by

using two backslashes, the IP address, one backslash and the port name of your printer.

**Step 4** You will now be asked to select a printer to install.



If you can not find your printer from the list, click on the **Have Disk** button and browse to the printer drivers for your printer (floppy, CD, or downloaded).

**Step 5** If you find your printer in the list, click on it and then click on **OK**. Windows will install the drivers.

**Step 6** Once the drivers have been installed, click **Finish** to complete the installation. You may be prompted for your Windows CD. If you are prompted for the CD, browse to the Win98 folder on the Windows CD and click on **OK**.

**Step 7** After the drivers have been installed for your printer, you will be prompted to print a test page. Select **Yes** and click on **Finish**.

**Q: How do I install my printer on Windows 2000/XP?**

**Step 1** Go to **Start>Settings>Printers>Add New Printer** (WinXP - **Start>Printers and Faxes>Add a Printer**).


**Step 2** Select **Local Printer**. Make sure to uncheck **Automatically detect and install my plug and play printer**. Click **Next**.

**Add Printer Wizard**

**Local or Network Printer**  
The wizard needs to know which type of printer to set up.

Select the option that describes the printer you want to use:

☒ Local printer attached to this computer.  
☐ Automatically detect and install my Plug and Play printer  
☐ A network printer, or a printer attached to another computer

 To set up a network printer that is not attached to a print server, use the "Local printer" option.

< Back   Next >   Cancel

**Step 3** Select **Create a New Port** and select **Standard TCP/IP port**. Click **Next**.


**Add Printer Wizard**

**Select a Printer Port**  
Computers communicate with printers through ports.

Select the port you want your printer to use. If the port is not listed, you can create a new port.

☐ Use the following port: LPT1: (Recommended Printer Port) ▼

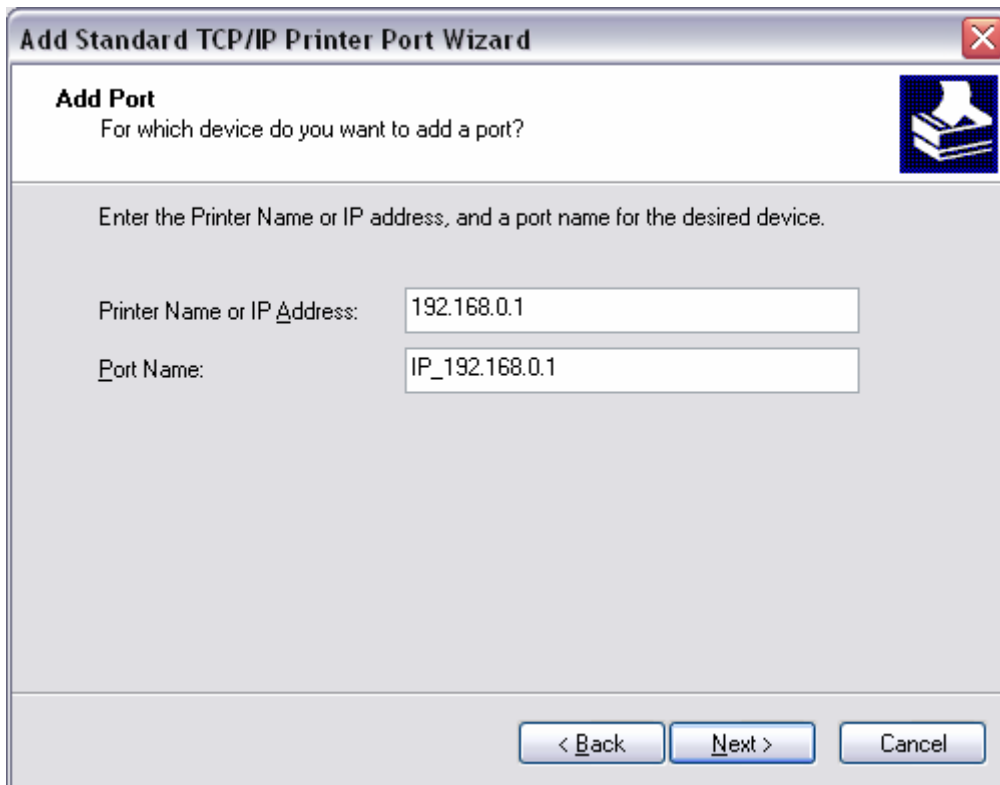
Note: Most computers use the LPT1: port to communicate with a local printer. The connector for this port should look something like this:



☒ Create a new port:  
Type of port: Standard TCP/IP Port ▼

< Back   Next >   Cancel

**Step 4** Enter the IP address of the router (192.168.0.1). Leave the port name with the default name. Click **Next**.



**Add Standard TCP/IP Printer Port Wizard**

**Add Port**  
For which device do you want to add a port?

Enter the Printer Name or IP address, and a port name for the desired device.

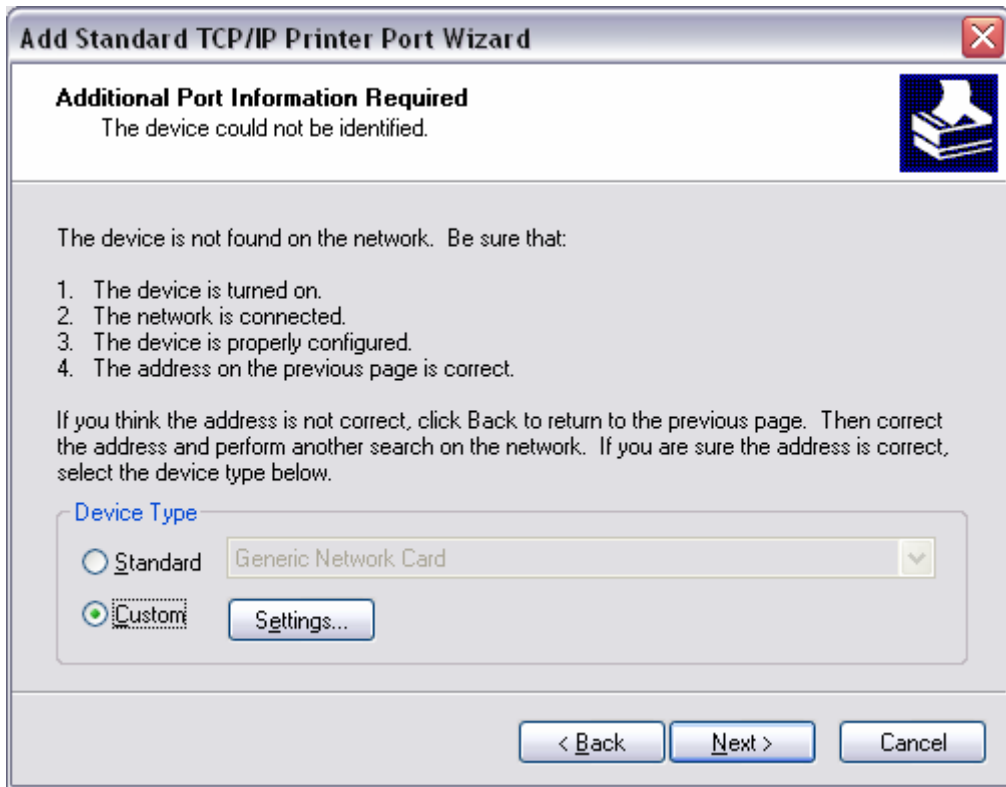
Printer Name or IP Address: 192.168.0.1

Port Name: IP\_192.168.0.1

< Back   Next >   Cancel

**Step 5** You will get a message saying that additional port information required.

**Step 6** Select **Custom** and then click **Settings**.



**Step 7** Set Protocol to **LPR**.

**Step 8** For the **LPR Settings** for the TEW-P1PG the Queue Name will be PS-xxxxxx-P1. X being the actual number listed in the Port Name box. It is case sensitive! In most cases, check **LPR Byte Counting Enabled**. If you cannot print, then try unchecking this.

**Configure Standard TCP/IP Port Monitor**

**Port Settings**

Port Name: IP\_154.164.215.1

Printer Name or IP Address: 154.164.215.1

**Protocol**

☐ Raw ☒ LPR

**Raw Settings**

Port Number: 9100

**LPR Settings**

Queue Name:

☐ LPR Byte Counting Enabled

☐ SNMP Status Enabled

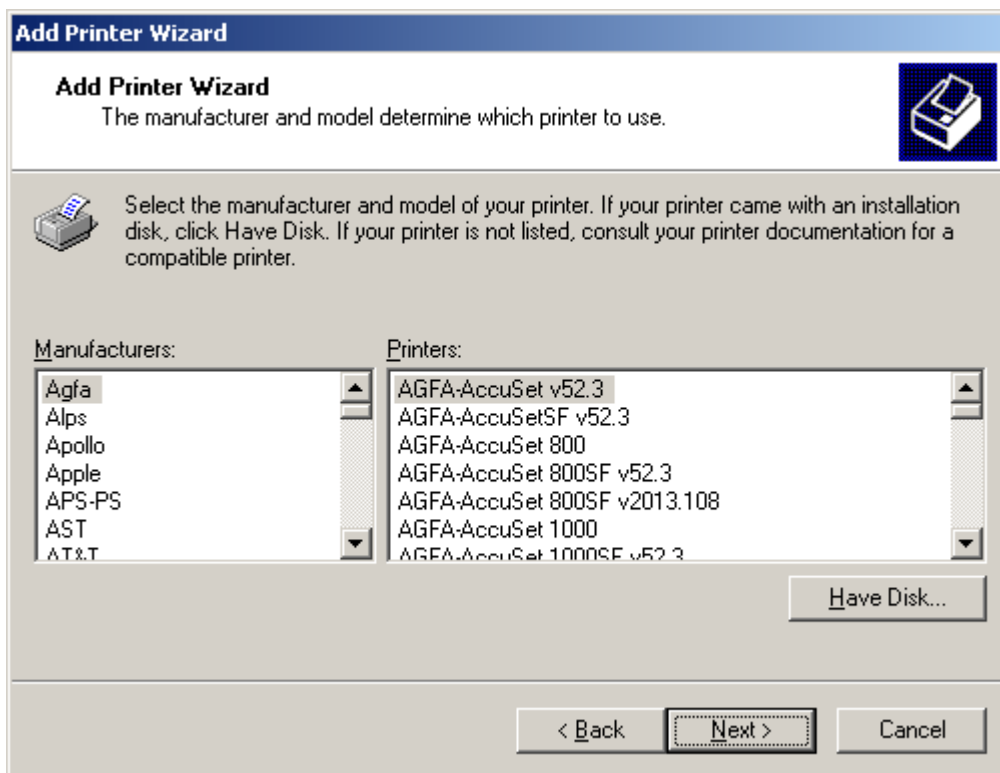
Community Name: public

SNMP Device Index: 1

OK Cancel

**Step 9** Select **OK > Finish**.

**Step 10** Continue with the **Add Printer Wizard**. Choose your printer from the list or click **Have Disk** and point to your printer driver disk.



**Q: Does the TEW-P1PG support Macintosh operating systems?**

Yes, but you must assign the print server an IP address from a Windows based operating system first. Once that is done you can use LPR or LPD printing for the Macs and you can manage the print server by entering its IP address into a web browser. Also the printer must be a postscript printer.

**Q: What is the queue name of the TEW-P1PG?**

The queue name will be PS-xxxxxx-P1. X being the actual number listed in the Port Name box. It is case sensitive.

**Q: Why can't I see my printer status information?**


Print servers are IEEE1284 bi-directional compatible. This means that data can be sent and received in both directions between the printer and the print server.

Toner status, paper level, etc., will not be communicated back to the PC. In order to get printer status information, the proprietary printer driver has **embedded code** that needs to be passed on to the print server, decoded, then interpreted by the print server. Trendware print servers do not support embedded driver codes. Trendware print servers, whether in Gateways or Stand Alone, are plain TCP/IP print servers.

**Q: Why is my parallel printer, printing a lot of garbage characters?**

1. Make sure that you have the latest print drivers for you printer.

2. Launch your web browser (such as the Internet Explorer 6.0 used in this manual). Then, type ***http://192.168.0.1*** (the default IP address) in the Address bar and press [Enter] to enter the Management screen of the Configuration Utility. Or use the IP address that you manually assigned to the Print Server. Go to Configuration on the top menu bar and System on the side bar. Change the Speed to Low and Save.

**TEW-P21G**

Management Configuration Tools Help

**Configuration**  
System  
Wireless  
Network  
User  
E-mail  
SNMP

**System Device**

Server Name : PS-589228  
Location :  
Admin Contact :  
Password : New Password :  
Confirm Again :  
**Port Setting**  
USB1 : Port Name : PS-589228-U1  
Description :  
P/L Printer : No  
USB2 : Port Name : PS-589228-U2  
Description :  
P/L Printer : No  
LPT3 : Port Name : PS-589228-P3  
Description :  
Speed : Low  
P/L Printer : No  
Save Cancel