

F.A.Q TEW-P1P & TEW-P1U

Q: Why doesn't Wireless Setup Wizard detect my print server?

1.If you are using Windows XP you will have to disable the built in firewall. But for all operating systems you have to disable any other form of firewall software such as Norton Internet Security, Black Ice, and ZoneAlarm.

Q: How do I change the IP address of my print server?

1. Make sure that on the print server, the switch is set to Diag, unplug the unit for 15 seconds then apply the power. **Note: The unit will broadcast its default SSID of WLAN-PS.**

2. Perform a site survey from your wireless network adapter and connect to the WLAN-PS network.

3. Insert the Setup CD into your CD-ROM drive.

4. Run the setup.exe from Windows 95/98/Me/NT/2000/XP/2003. The Network Print Monitor for Windows welcome message then appears. Choose Install Setup Utility or Manual Installation.

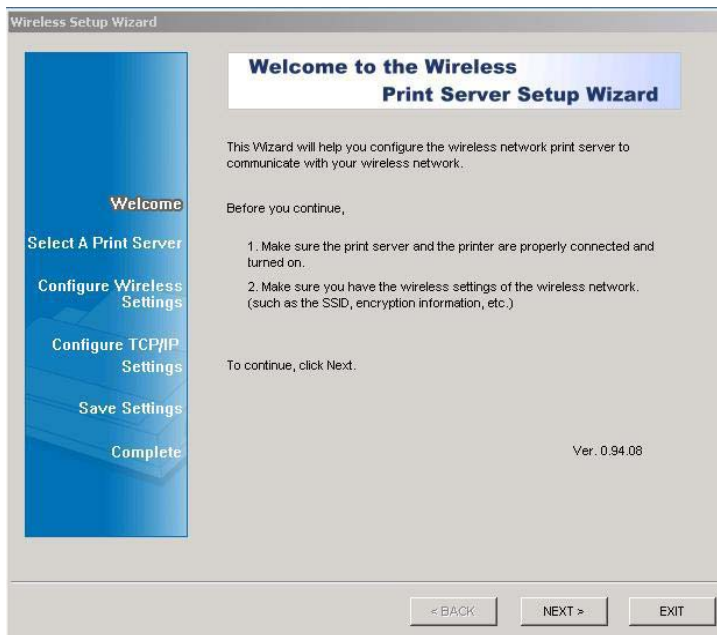


5. Choose Install Setup Utility, the program will auto install the Network Print Monitor, PS Admin and Setup Wizard into your computer. The default installation directory will be C:\Program files\Network Print Monitor.

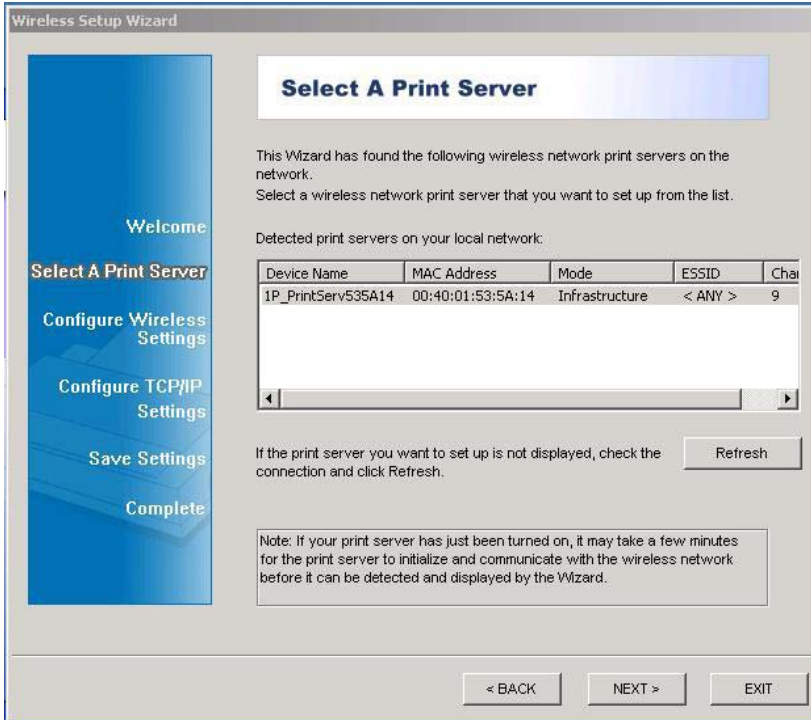
6. After installation completes, the Setup Wizard message appears.



7. Click Wireless Setup Wizard and the following message appears.



8. Click NEXT; the wizard will automatically discover the wireless print server.



Wireless Setup Wizard

Select A Print Server

This Wizard has found the following wireless network print servers on the network.
Select a wireless network print server that you want to set up from the list.

Detected print servers on your local network:

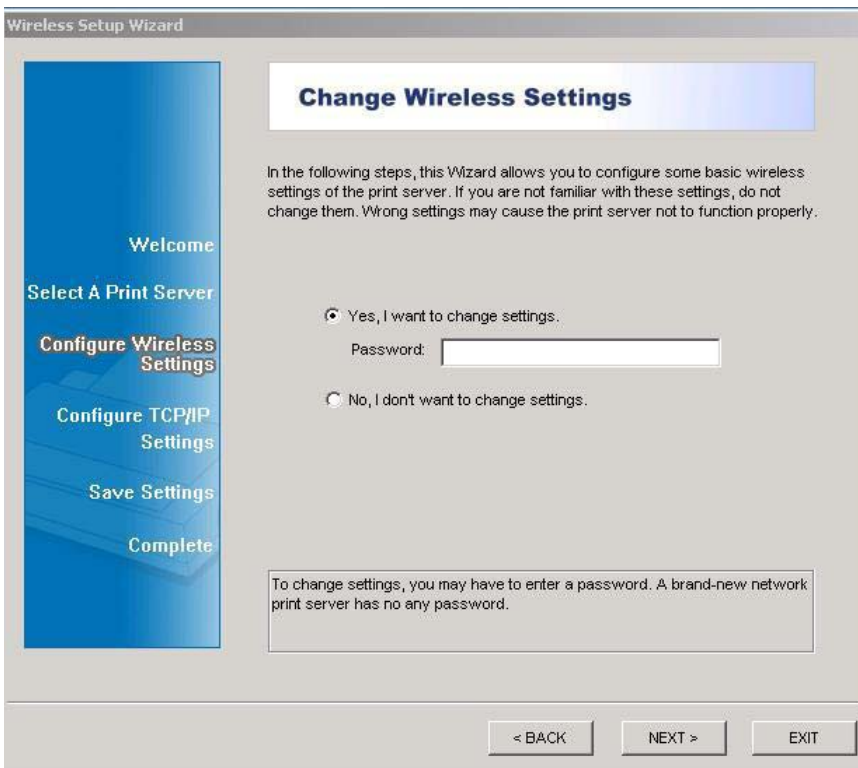
Device Name	MAC Address	Mode	ESSID	Cha
IP_PrintServ535A14	00:40:01:53:5A:14	Infrastructure	< ANY >	9

If the print server you want to set up is not displayed, check the connection and click Refresh.

Note: If your print server has just been turned on, it may take a few minutes for the print server to initialize and communicate with the wireless network before it can be detected and displayed by the Wizard.

< BACK NEXT > EXIT

9. Select the print server, which you want to configure and press NEXT.



Wireless Setup Wizard

Change Wireless Settings

In the following steps, this Wizard allows you to configure some basic wireless settings of the print server. If you are not familiar with these settings, do not change them. Wrong settings may cause the print server not to function properly.

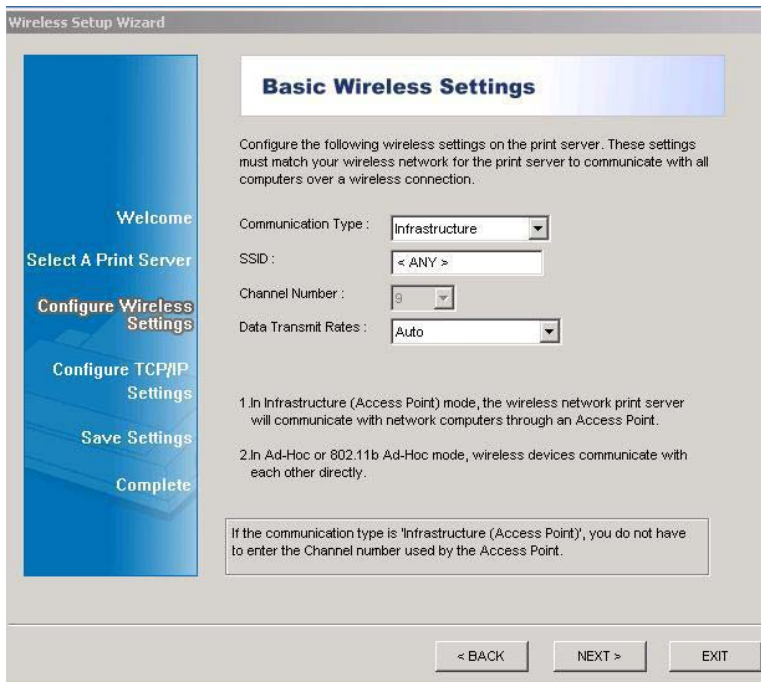
Yes, I want to change settings.
Password:

No, I don't want to change settings.

To change settings, you may have to enter a password. A brand-new network print server has no any password.

< BACK NEXT > EXIT

10. Select YES if you want to change the configuration and press NEXT then the following window appears. For communication type please choose Infrastructure. For SSID, Input the proper SSID of your wireless network. Click NEXT.



The screenshot shows the 'Wireless Setup Wizard' window with the 'Basic Wireless Settings' tab selected. On the left is a vertical navigation pane with buttons for 'Welcome', 'Select A Print Server', 'Configure Wireless Settings' (highlighted), 'Configure TCP/IP Settings', 'Save Settings', and 'Complete'. The main area contains the following settings:

- Communication Type: Infrastructure (dropdown menu)
- SSID: < ANY > (text input field)
- Channel Number: 9 (dropdown menu)
- Data Transmit Rates: Auto (dropdown menu)

Below the settings, there are two numbered instructions:

1. In Infrastructure (Access Point) mode, the wireless network print server will communicate with network computers through an Access Point.
2. In Ad-Hoc or 802.11b Ad-Hoc mode, wireless devices communicate with each other directly.

A note in a box states: 'If the communication type is 'Infrastructure (Access Point)', you do not have to enter the Channel number used by the Access Point.'

At the bottom, there are three buttons: '< BACK', 'NEXT >', and 'EXIT'.

11. Choose Enable WEP Encryption as you need, and click NEXT.

Wireless Setup Wizard

Welcome

Select A Print Server

Configure Wireless Settings

Configure TCP/IP Settings

Save Settings

Complete

Security and WEP Encryption Settings

Configure the following security settings on the print server. These settings must match your wireless network for the network print server to communicate with all computers over a wireless connection.

Enable WEP Encryption

Type : 64-bit 128-bit

Key Format : Alphanumeric Hexadecimal

Encryption Key :

1. For 64-bit (sometimes called 40-bit) WEP encryption, enter the key which contains 5 alphanumeric character or 10 hexadecimal digits (depending on the key format you select)

2. For 128-bit WEP encryption, enter the key which contains 13 alphanumeric characters or 26 hexadecimal digits (depending on the key format you select)

(An alphanumeric character is a through z, A through Z, and 0 through 9. A hexadecimal digit is 0 through 9 and A through F)

If your wireless network uses WEP encryption to secure all data communications, you must enable WEP encryption setting and enter a key for the print server.

< BACK NEXT > EXIT

12. Specify a fixed IP address or use dynamic IP address, then click NEXT.

Wireless Setup Wizard

Welcome

Select A Print Server

Configure Wireless Settings

Configure TCP/IP Settings

Save Settings

Complete

TCP/IP Settings

Specify TCP/IP settings for the print server. The print server can be set up either to obtain IP address from a DHCP server on the network or to use a static IP address.

Obtain an IP address automatically (use DHCP)

Specify an IP address

IP address :

Subnet Mask :

Gateway's IP :

It's highly recommended that you set up the print server to use a static IP address. Make sure the IP address is correctly entered for the print server to work properly.

< BACK NEXT > EXIT

Q: How do I find the Port Name of the Print Server?

The Port Name is already defined. The port name is lp1.

Q: How do I install my printer on Windows 95/98/ME?

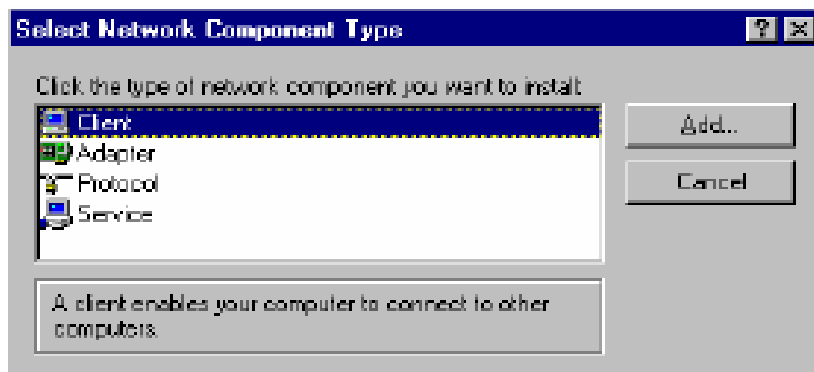
In Windows 98/Me you will need to install the LPR client.

For Windows 98/ME you will also need to know the port name that you are printing to (The Port Name is the lp1.)

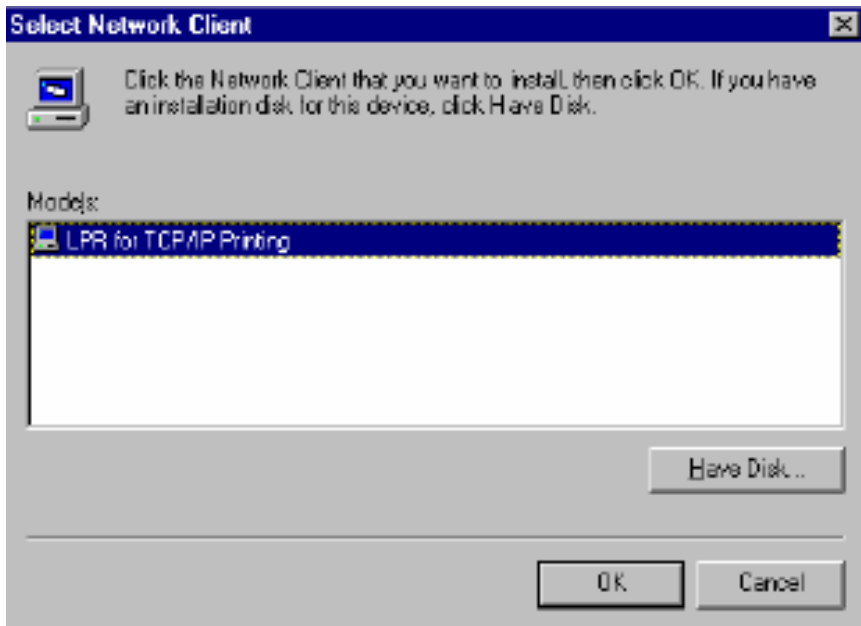
Installing LPR:

Step 1 Once the file is downloaded and extracted, Go to Start > Settings > Control Panel > double-click on Networks. Click on Add

Step 2 Highlight Client and click on Add.

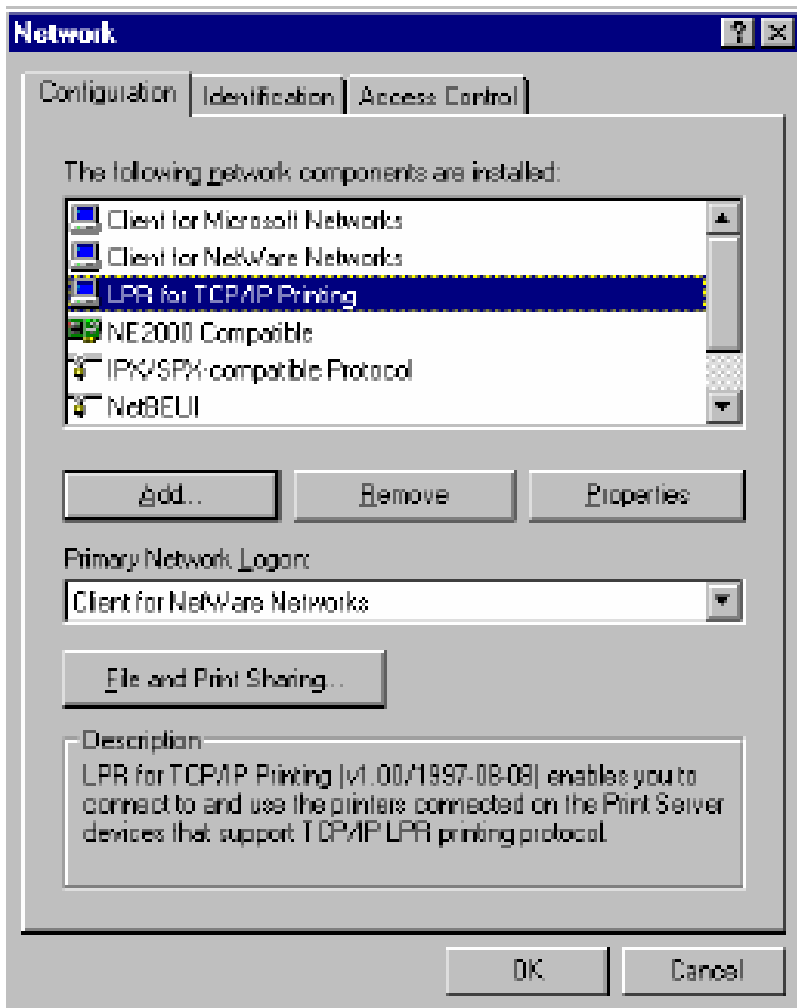


Step 3 Click on Have Disk > Browse. Browse to the location of the extracted LPR Client.

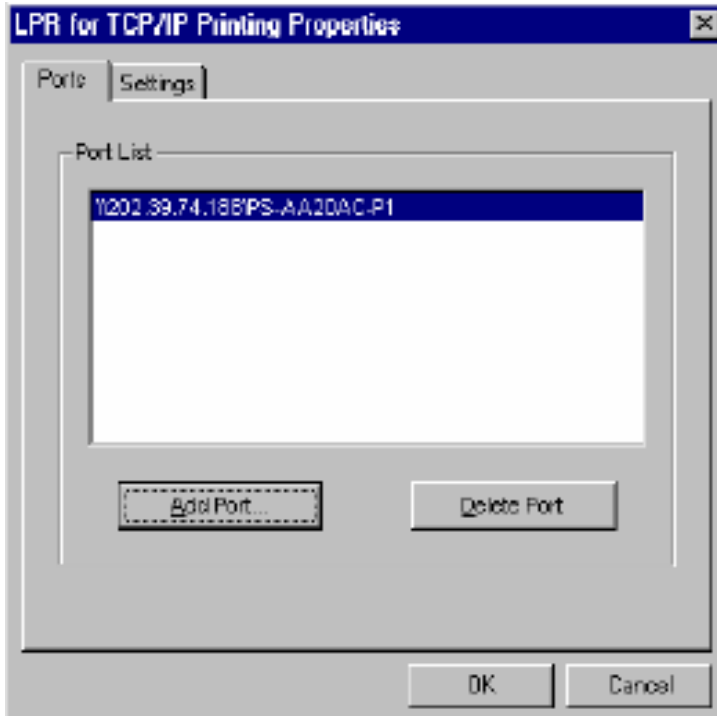


Step 4 Click OK 3 times.

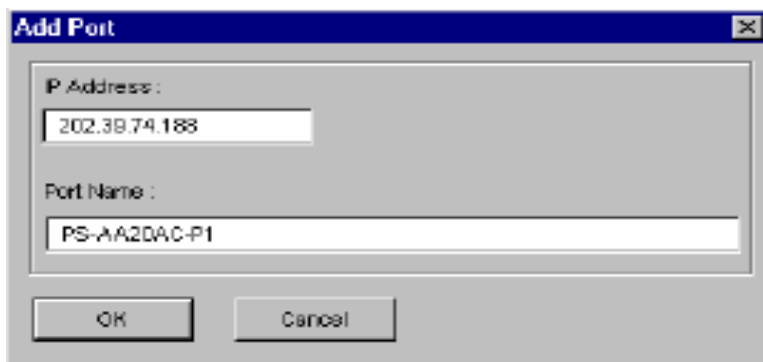
Step 5 From the list highlight LPR For TCP/IP and click on Properties



Step 6 Click on Add Port



In the top field type in the IP address of your print server. In the bottom field type in the port name of your print server, the Port Name is lp1 then click *OK*.



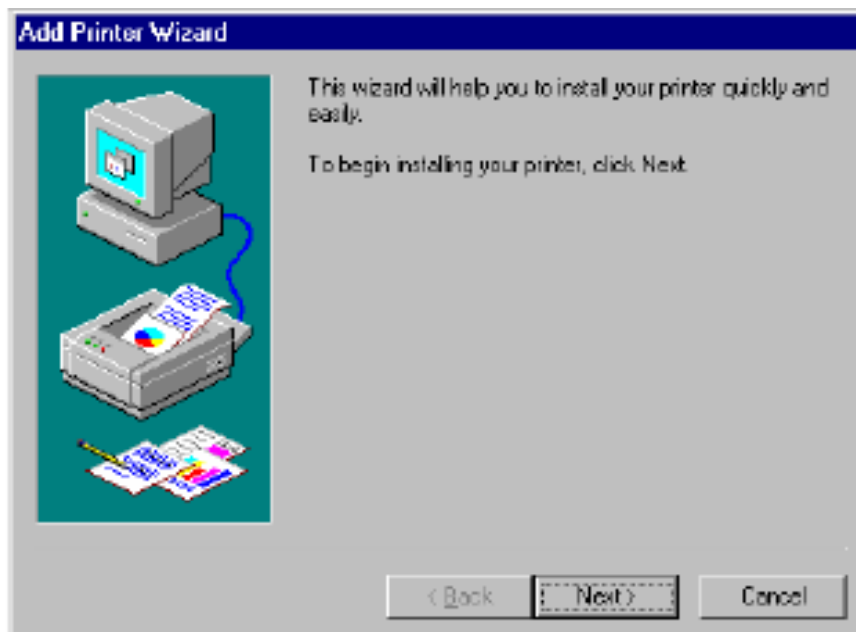
Step 7 Click on *OK*. Windows will ask you to restart. Click *Yes*.

LPR is now properly installed on your computer.

Printer Installation

Step 1 Open your printers folder. Go to *Start > Settings > Printers*.

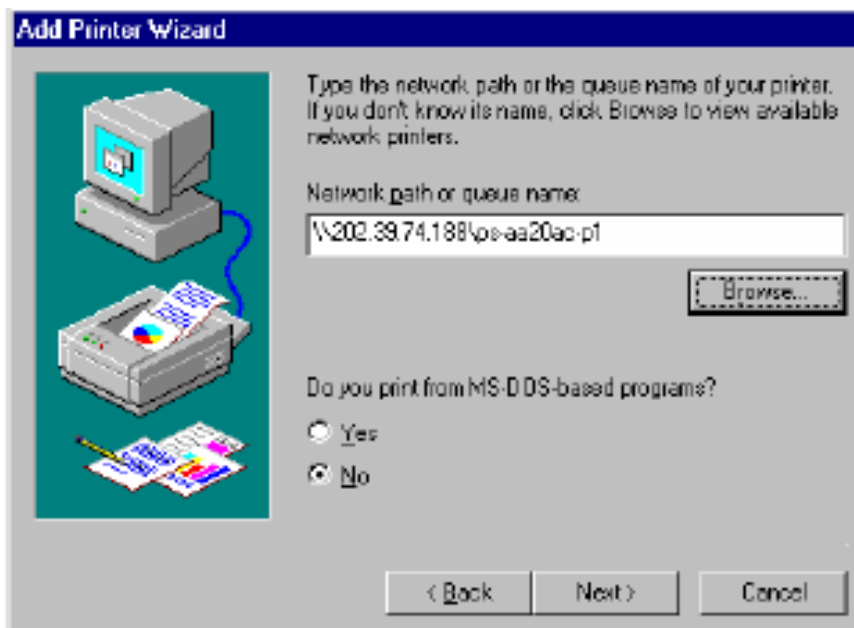
Step 2 Double-click on the *Add Printer* icon, which will launch the *Add Printer Wizard*.



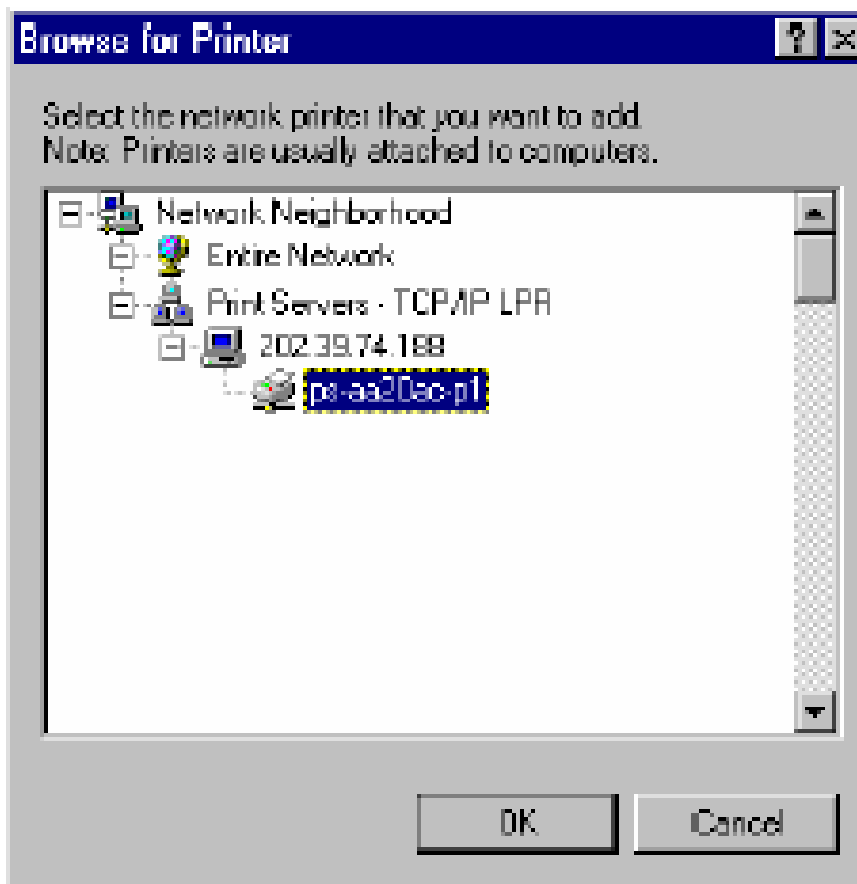
Select Network Printer and click on Next.



Step 3 Click on the Browse button and browse to the print server.



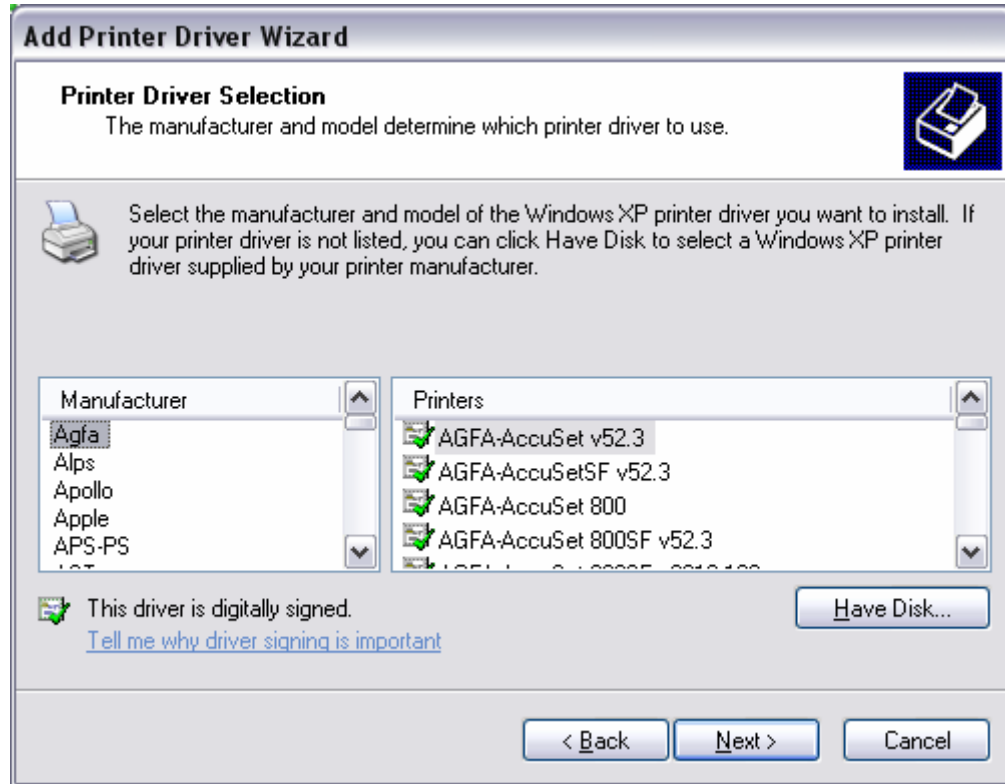
Highlight the Print Server and click on OK to return to the Add Printer Wizard.



Click on Next. If you are unable to do this you can manually enter the Print

Server by using two backslashes, the IP address, one backslash and the port name of your printer.

Step 4 You will now be asked to select a printer to install.



If you cannot find your printer from the list, click on the Have Disk button and browse to the printer drivers for your printer (floppy, CD, or downloaded).

Step 5 If you find your printer in the list, click on it and then click on OK. Windows will install the drivers.

Step 6 Once the drivers have been installed; click Finish to complete the installation. You may be prompted for your Windows CD. If you are prompted for the CD, browse to the Win98 folder on the Windows CD and click on OK

Step 7 After the drivers have been installed for your printer, you will be prompted to print a test page. Select Yes and click on Finish.

Q: How do I install my printer on Windows 2000/XP?

Step 1 Go to Start>Settings>Printers>Add New Printer (WinXP - Start>Printers and Faxes>Add a Printer).

Step 2 Select Local Printer. Make sure to uncheck Automatically detect and install my

plug and play printer. Click Next.



Step 3 Select Create a New Port and select Standard TCP/IP port. Click Next.


Add Printer Wizard

Select a Printer Port
Computers communicate with printers through ports.

Select the port you want your printer to use. If the port is not listed, you can create a new port.

Use the following port: LPT1: (Recommended Printer Port)

Note: Most computers use the LPT1: port to communicate with a local printer. The connector for this port should look something like this:



Create a new port:
Type of port: Standard TCP/IP Port

< Back Next > Cancel

Step 4 Enter the IP address of the router (192.168.0.1). Leave the port name with the default name. Click Next.

Add Standard TCP/IP Printer Port Wizard

Add Port
For which device do you want to add a port?

Enter the Printer Name or IP address, and a port name for the desired device.

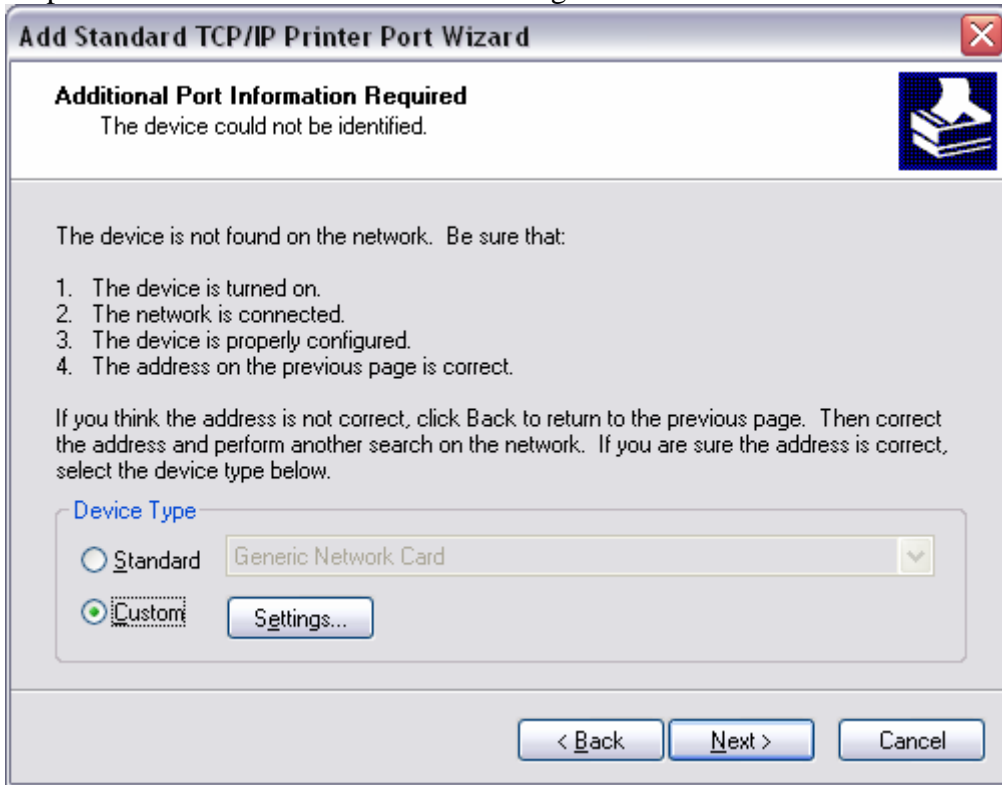
Printer Name or IP Address: 192.168.0.1

Port Name: IP_192.168.0.1

< Back Next > Cancel

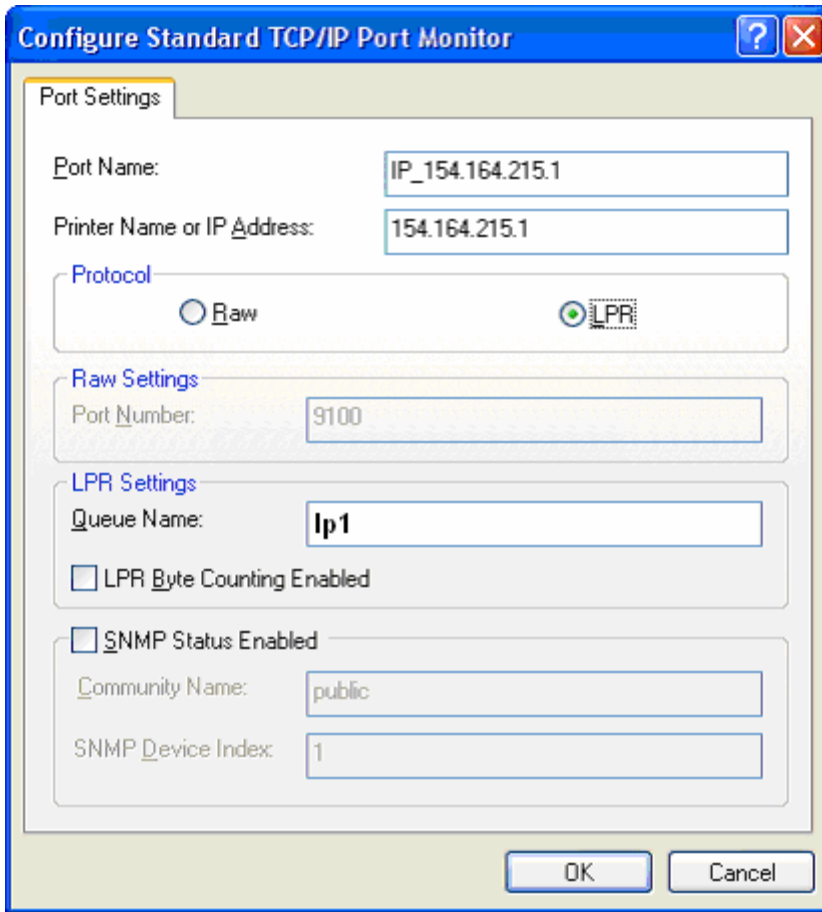
Step 5 You will get a message saying that additional port information required.

Step 6 Select Custom and then click Settings.



Step 7 Change the Protocol to LPR.

Step 8 For the LPR Settings for the TEW-P1P the Queue Name will be lp1. It is case sensitive! In most cases, check LPR Byte Counting Enabled. If you cannot print, then try unchecking this.



Configure Standard TCP/IP Port Monitor

Port Settings

Port Name: IP_154.164.215.1

Printer Name or IP Address: 154.164.215.1

Protocol

Raw LPR

Raw Settings

Port Number: 9100

LPR Settings

Queue Name: lp1

LPR Byte Counting Enabled

SNMP Status Enabled

SNMP Settings

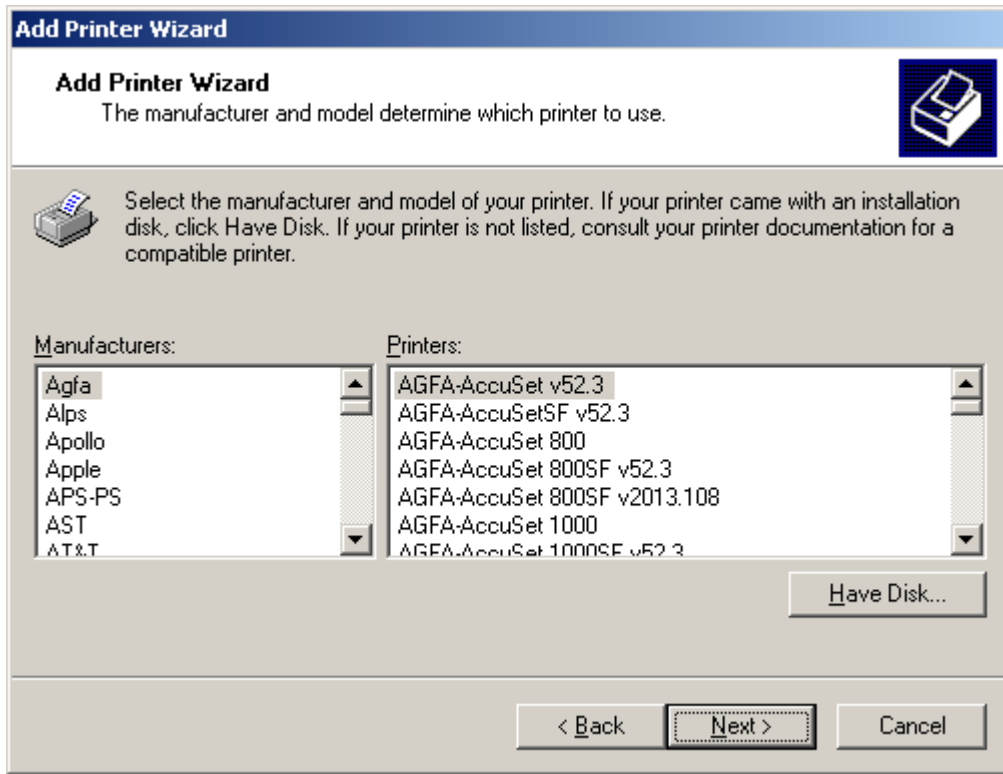
Community Name: public

SNMP Device Index: 1

OK Cancel

Step 9 Select OK > Finish.

Step 10 Continue with the Add Printer Wizard. Choose your printer from the list or click Have Disk and point to your printer driver disk.



Q: Does the TEW-P1P support Macintosh operating systems?

Yes, but you must assign the print server an IP address from a Windows based operating system first. Once that is done you can use LPR or LPD printing for the Macs and you can manage the print server by entering its IP address into a web browser. Also the printer must be a postscript printer.

Q: What is the queue name of the TEW-P1P or TEW-P1U?

The queue name will be lp1 and it is case sensitive.

Q: Why can't I see my printer status information?

Print servers are IEEE1284 bi-directional compatible. This means that data can be sent and received in both directions between the printer and the print server.

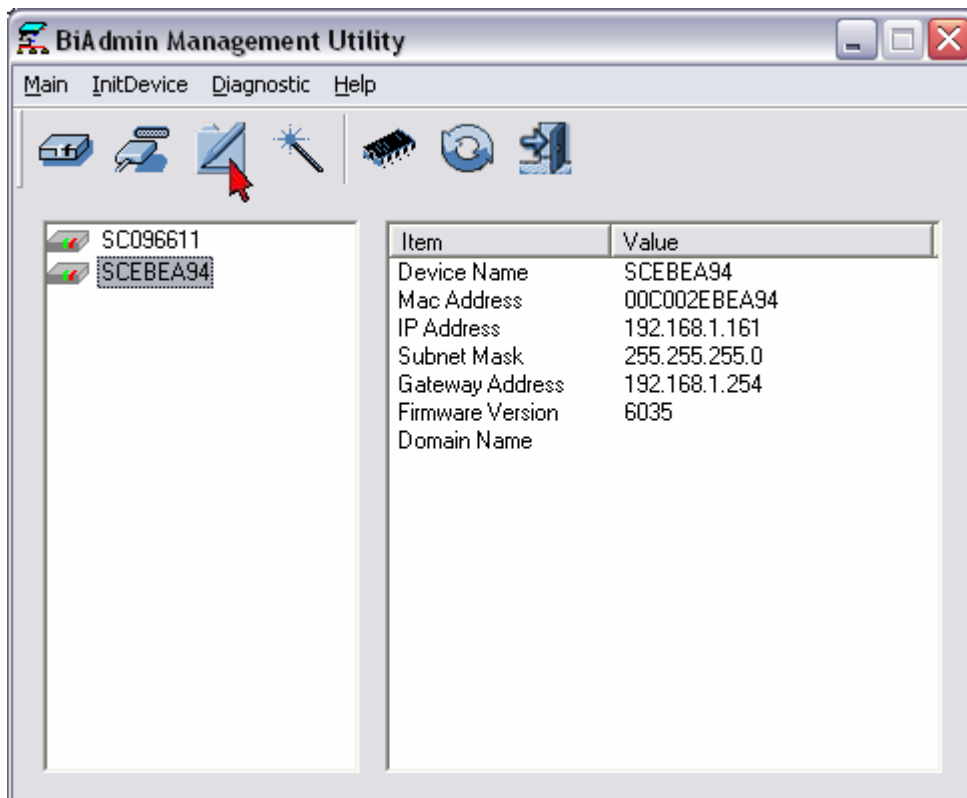
Toner status, paper level, etc., will not be communicated back to the PC. In order to get printer status information, the proprietary printer driver has embedded code that needs to be passed on to the print server, decoded, then interpreted by the print server. Trendware print servers do not support embedded driver codes. Trendware print servers, whether in Gateways or Stand Alone, are plain TCP/IP print servers.

Q: Why is my printer, printing a lot of garbage characters?

Make sure that you have the latest print drivers for you printer.

For the TEW-P1P you can also try changing the port speed.

- 1) Open the Bi Admin Management utility. Click on Configuration.



- 2) Click on the Port tab and change the Printer Type.

Configuration ✖

System | TCP/IP | Internet Printing | **Port** | Wireless

Selected Device: SCEBEA94

Physical Port

Selected Physical Port: P1

Handshake Signal: Busy Only Busy & Ack

Printer Type: High Speed Low Speed

Logical Port

Selected Logical Port: Logical Port 1

Map to Physical Port: P1

Convert LF to LF+CR: No Yes

Prefix of Job:

Suffix of Job:

Get Defaults

OK Cancel Help