

F.A.Q's for TEW-450APB

Q: How do I configure the Access Point through the web-based configuration?

A: Open your web browser and type the IP address of the TEW-450APB in the address bar. The default IP address is 192.168.1.1. At the login, enter your username (admin) and password (admin).

Q: What is the default IP address of my Access Point?

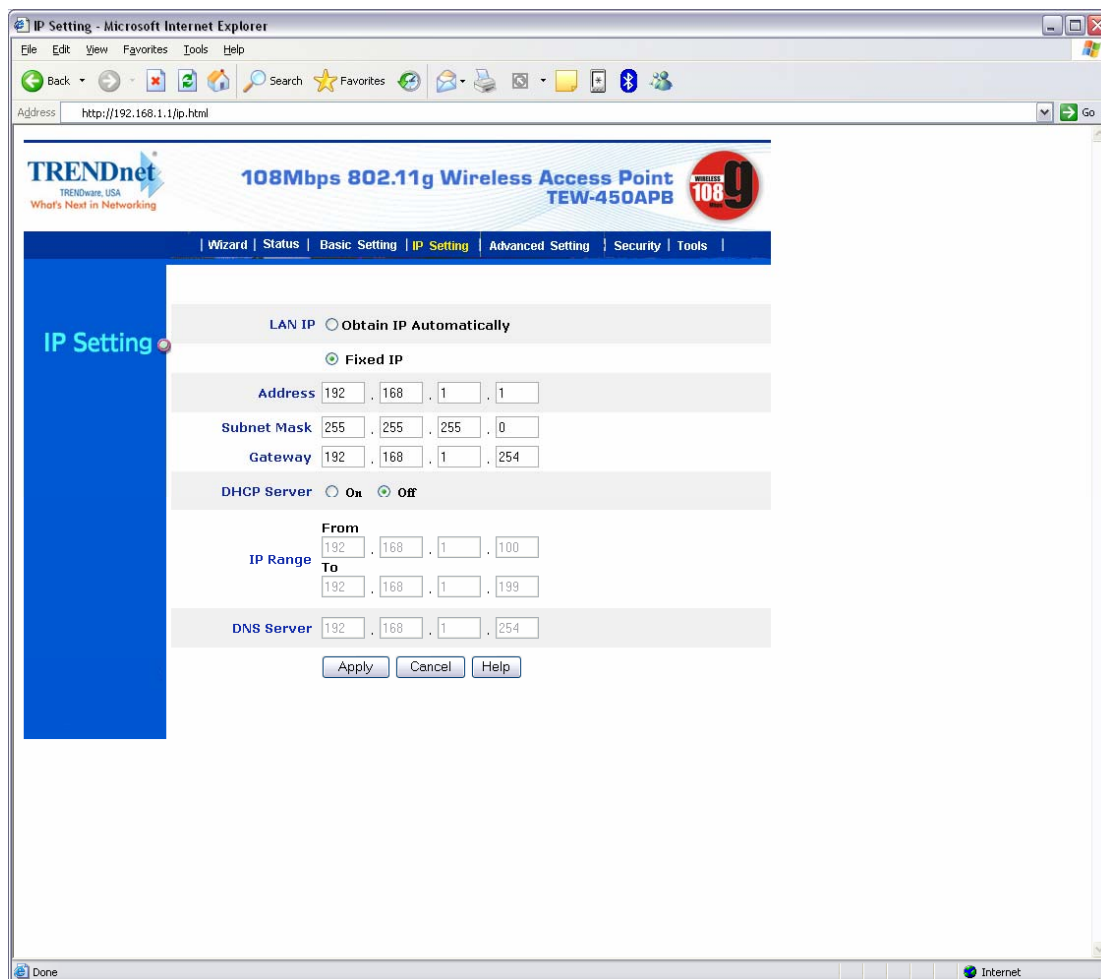
A: The default IP address of the TEW-450APB is 192.168.1.1.

Q: How do I change the IP address of my TEW-450APB?

A:

1) Open your web browser and type the IP address of the TEW-450APB in the address bar. The default IP address is 192.168.1.1. At the login, enter your username (admin) and password (admin).

2) Click on the IP Setting tab at the top of the page.



IP Setting - Microsoft Internet Explorer

Address: http://192.168.1.1/ip.html

TRENDnet
TRENDnet, USA
What's Next in Networking

108Mbps 802.11g Wireless Access Point
TEW-450APB

Wizard | Status | Basic Setting | **IP Setting** | Advanced Setting | Security | Tools

LAN IP Obtain IP Automatically

Fixed IP

Address: 192 . 168 . 1 . 1

Subnet Mask: 255 . 255 . 255 . 0

Gateway: 192 . 168 . 1 . 254

DHCP Server On Off

IP Range

From: 192 . 168 . 1 . 100

To: 192 . 168 . 1 . 199

DNS Server: 192 . 168 . 1 . 254

Apply Cancel Help

3) Change the IP address to the desired IP address and click apply.

Q: What is the default username and password for the TEW-450APB?

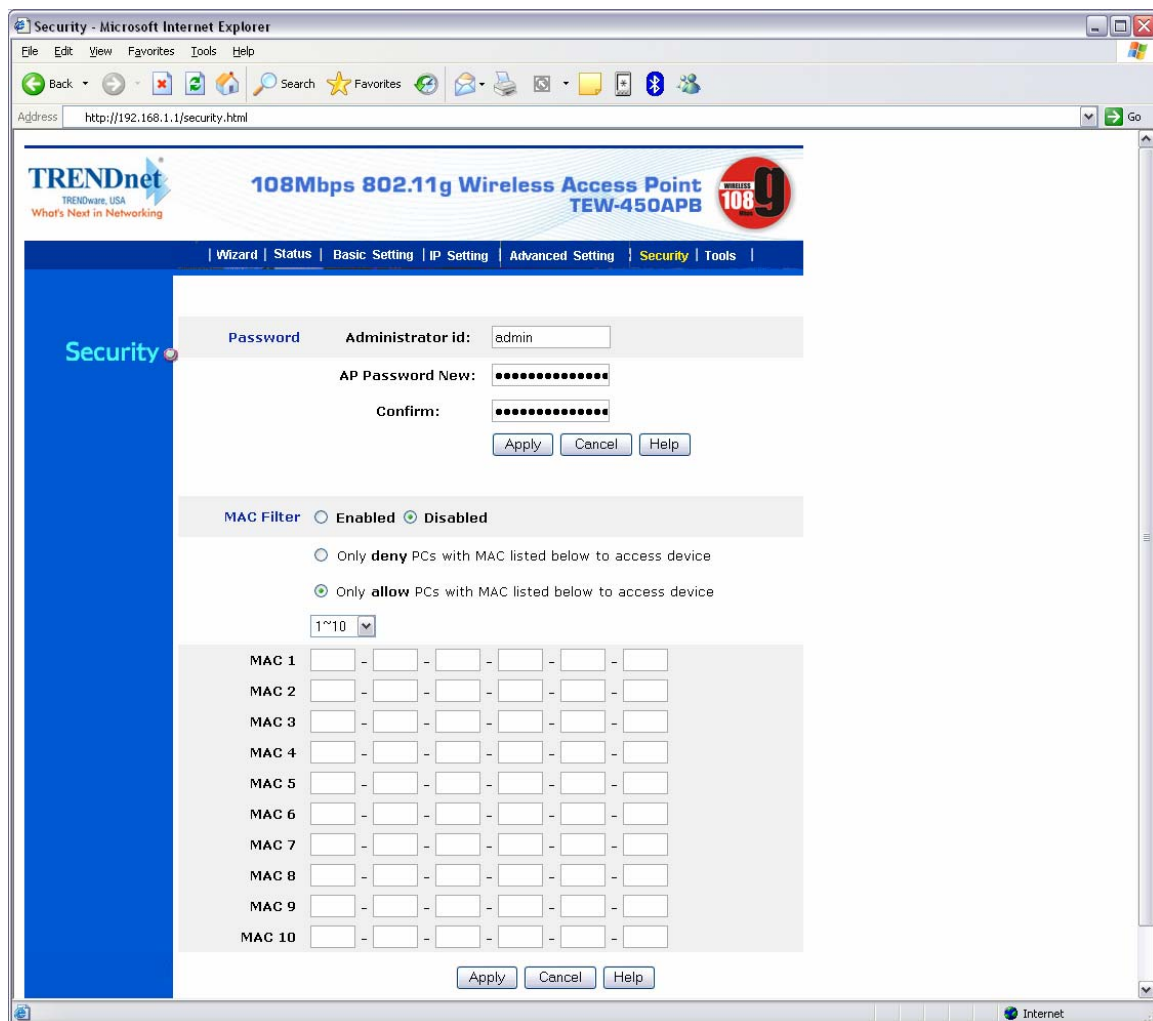
A: The default username and password are both “admin”.

Q: How do I change the password and username on my TEW-450APB?

A:

1) Open your web browser and type the IP address of the TEW-450APB in the address bar. The default IP address is 192.168.1.1. At the login, enter your username (admin) and password (admin).

2) Click on the Security tab at the top of the page.



3) Enter the new Administrator ID and/or password. Click Apply and then back to save the settings.

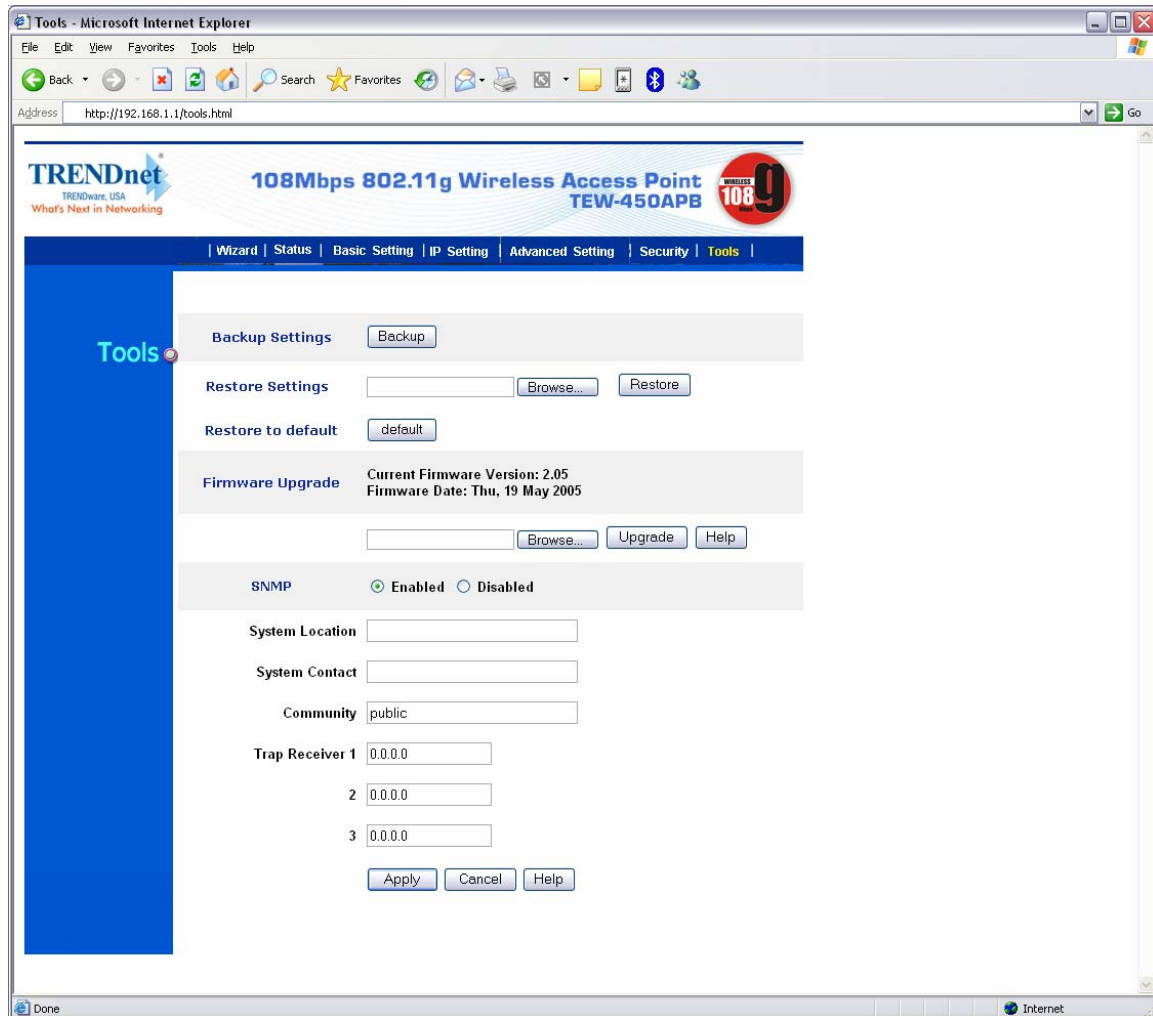
Q: What can I do if I forgot my password or want to reset back to factory defaults.

Locate the reset button on the back of the unit. Press and hold it in for approximately 15 seconds.

Q: How do I save or reload the configuration of my Access Point?

A: 1) Open your web browser and type the IP address of the TEW-450APB in the address bar. The default IP address is 192.168.1.1. At the login, enter your username (admin) and password (admin).

2) Click on the Tools tab at the top of the page.



3) To save a configuration file click on the “Backup” button. The default file name is config.bin.

To load a previously saved configuration file click on “Browse” next to Restore settings. Locate and select the previously saved config.bin file and click on “Restore”.

Q: How do I upgrade the firmware on my Access Point?

A:

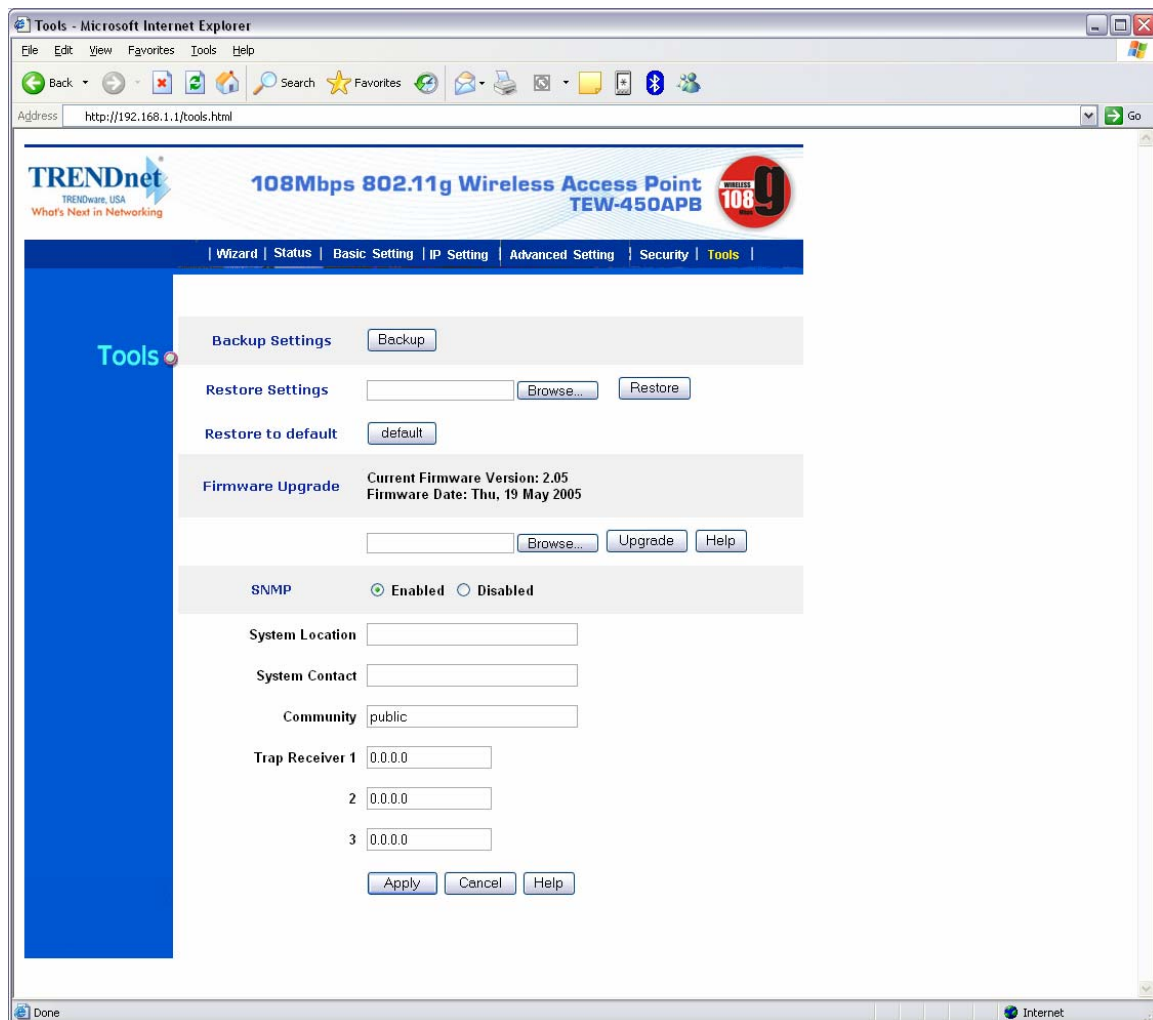
DO NOT upgrade firmware on any TRENDnet product using a wireless connection.

Firmware upgrades over wireless connections may damage the product. Please perform firmware upgrades with "wired" network connections only.

Click [here](#) to download the firmware. Save it to your desktop and extract it.

1) Open your web browser and type the IP address of the TEW-450APB in the address bar. The default IP address is 192.168.1.1. At the login, enter your username (admin) and password (admin).

2) Click on the Tools tab at the top of the page.



3) Click on "Browse" next to the box under the Firmware Upgrade section. Locate and select the firmware file that you previously downloaded and extracted.

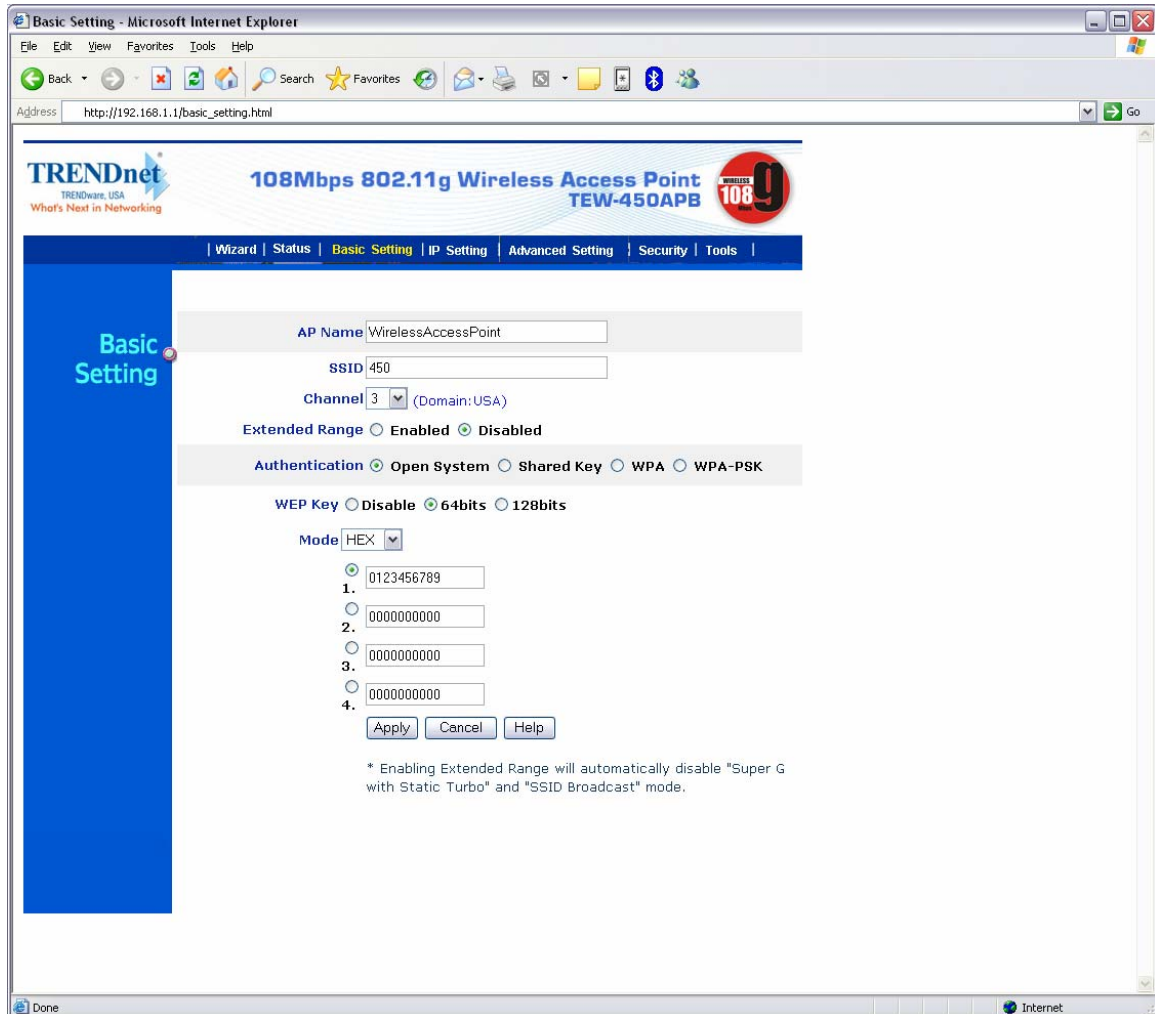
4) Click on "Upgrade". It will take approximately 30 seconds to upgrade the firmware and the access point to restart. After it's restarted click on "Back".

Do NOT interrupt the firmware update process. Doing so may damage the product.

Q: How do I enable encryption on my Access Point?

A:

- 1) Open your web browser and type the IP address of the TEW-450APB in the address bar. The default IP address is 192.168.1.1. At the login, enter your username (admin) and password (admin).
- 2) Click on the Basic Setting tab at the top of the page

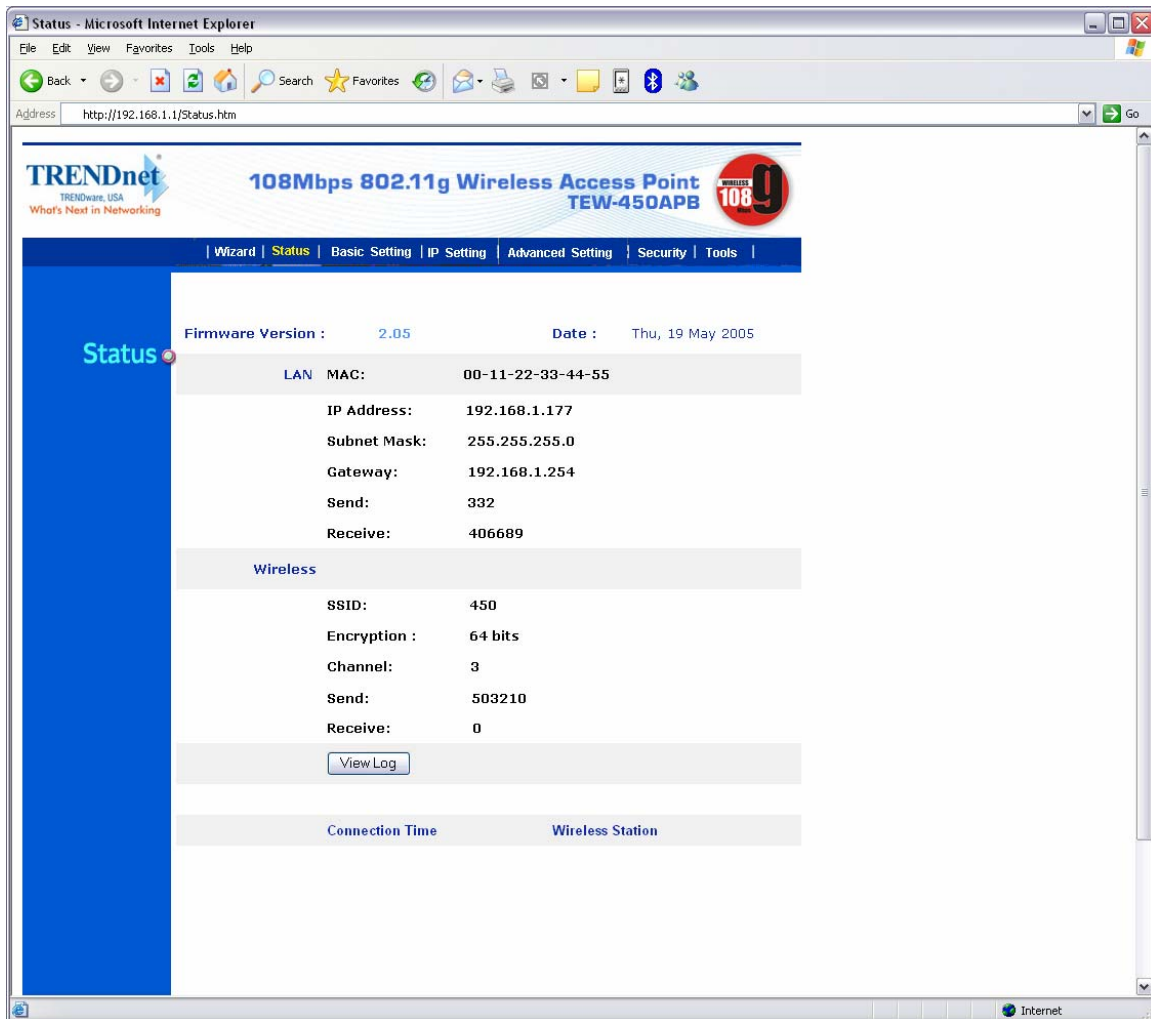


- 3) Choose your Authentication type and enter your key settings.

Q: Where can I find the MAC address of my Access Point?

A: The MAC address can be located on the bottom of the TEW-450APB. It can also be found by logging into the unit.

- 1) Open your web browser and type the IP address of the TEW-450APB in the address bar. The default IP address is 192.168.1.1. At the login, enter your username (admin) and password (admin).
- 2) Click on the Status tab at the top of the page. It is located directly across from LAN MAC:



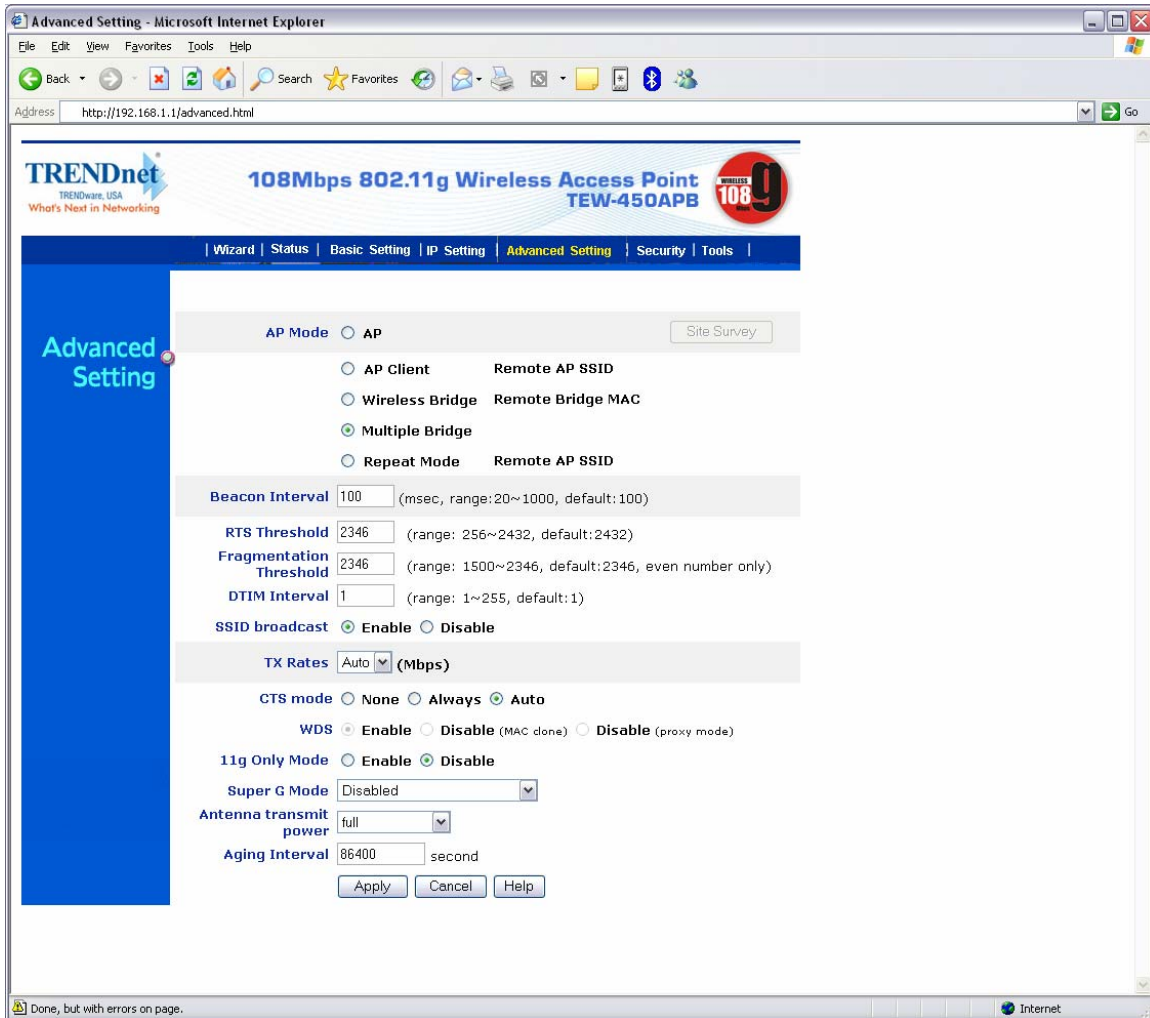
Q: How do I configure my TEW-450APB in Multiple Bridge mode?

The Multiple Bridge feature uses WDS (Wireless Distribution System). The channel and SSID on the remote Access Points must be the same as the TEW-450APB. The remote Access Point must also support WDS.

Note: WPA encryption is not supported on WDS links.

- 1) Open your web browser and type the IP address of the TEW-450APB in the address bar. The default IP address is 192.168.1.1. At the login, enter your username (admin) and password (admin).

- 2) Click on the Advanced Setting tab at the top of the page.

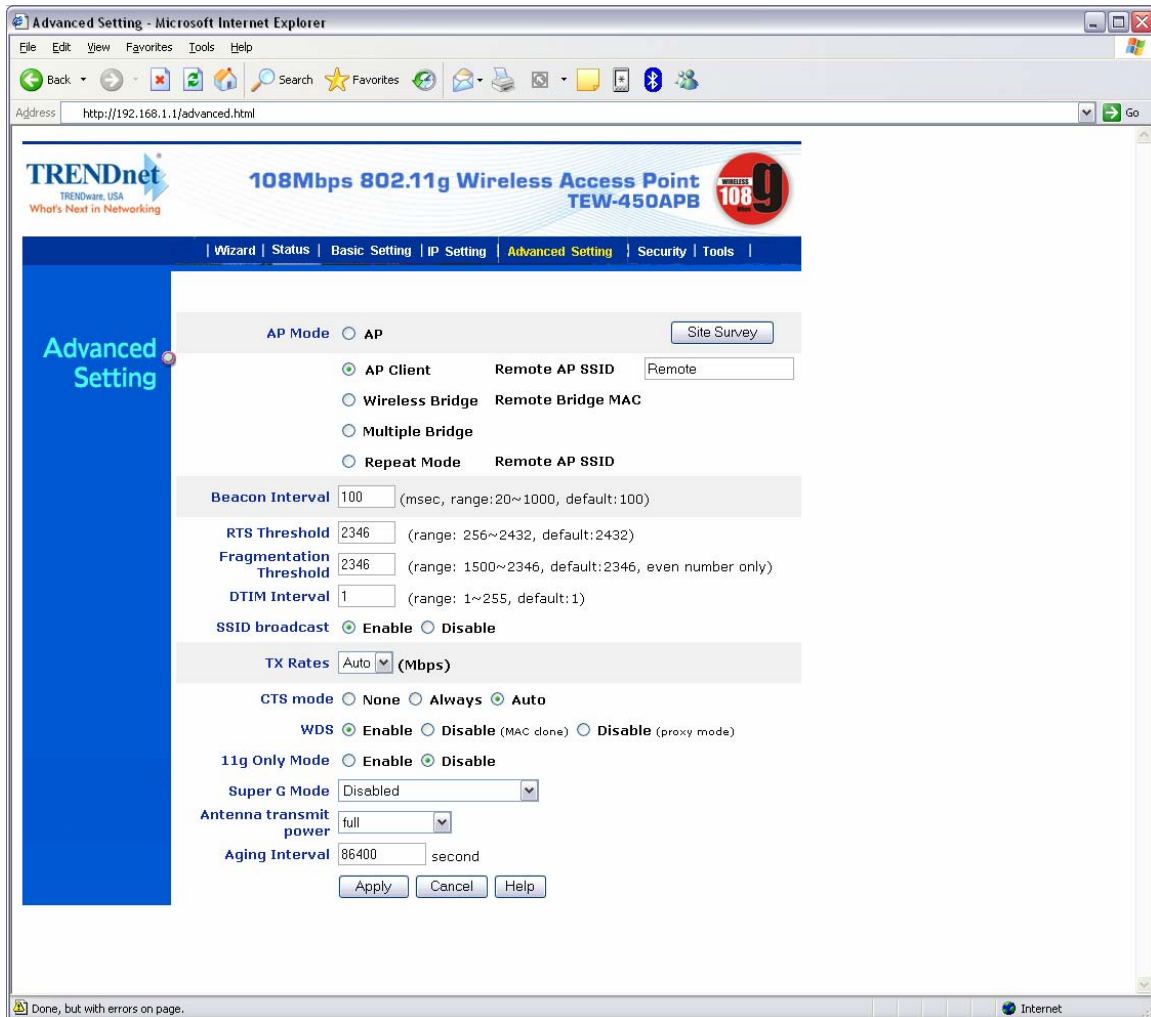


- 3) Select “Multiple Bridge” under the AP Mode section. Click “Apply” then back.

Q: How do I configure my TEW-450APB in “Client Mode”?

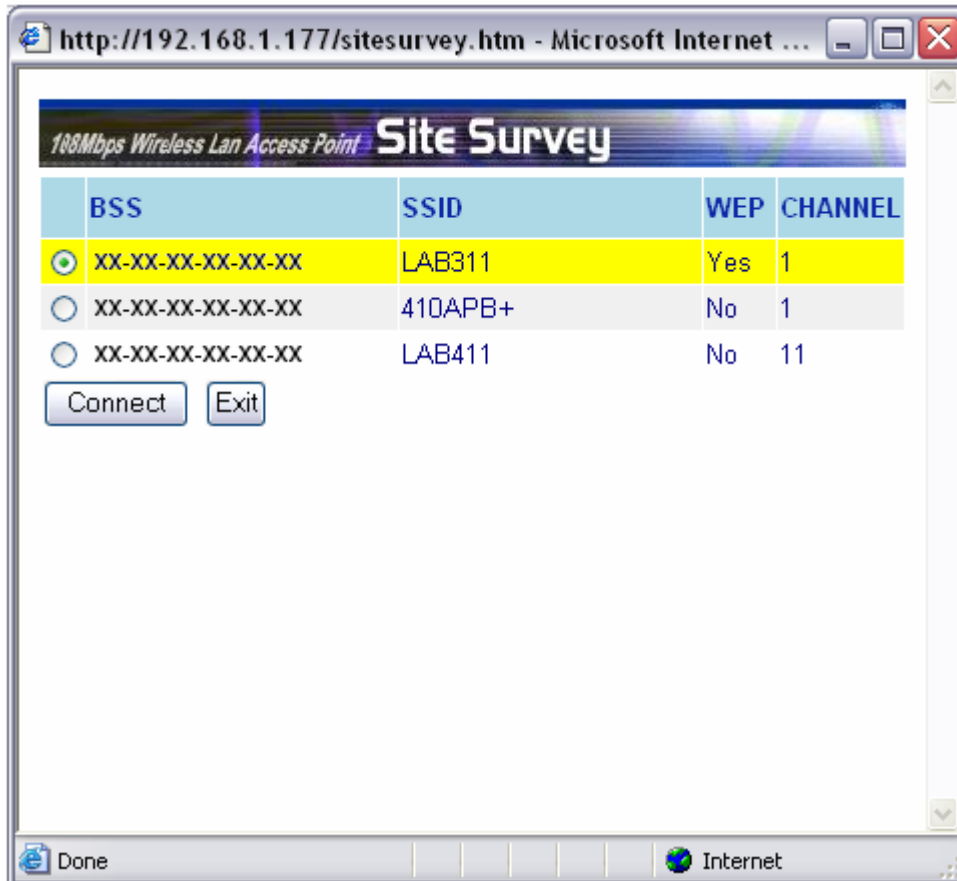
A:

- 1) Open your web browser and type the IP address of the TEW-450APB in the address bar. The default IP address is 192.168.1.1. At the login, enter your username (admin) and password (admin).
- 2) Click on the Advanced Setting tab at the top of the page.



- 3) Enter in the remote access point's SSID into the "Remote AP SSID" field. Click "Apply" then back.
- 4) You can also click on the Site Survey button to display a list of available networks to connect to. Select the desired network and click "Connect".

Note: If you have any pop-up blockers enabled it may prevent the Site Survey window from popping up.



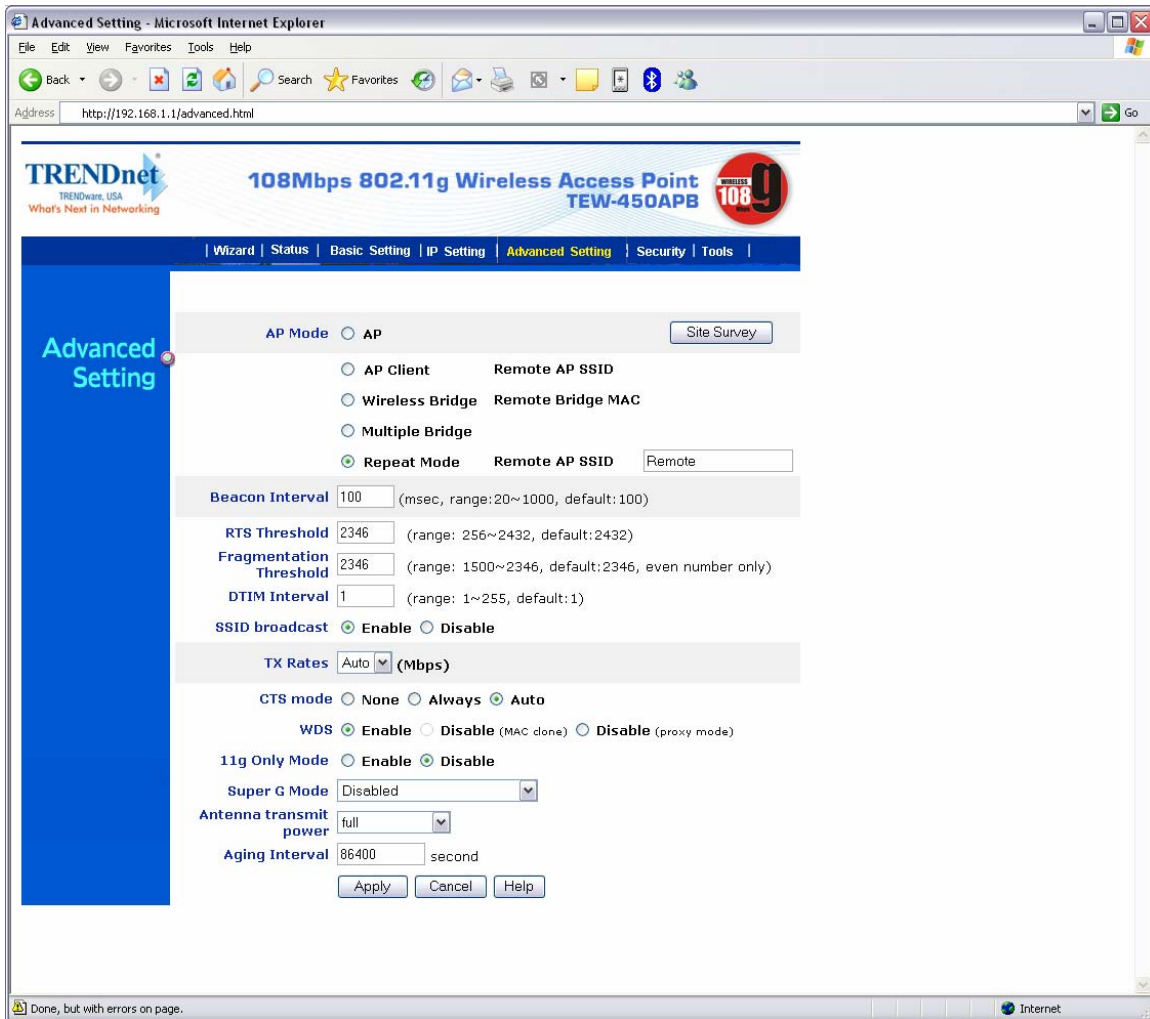
Q: How do I configure my TEW-450APB in “Repeat Mode”?

A:

The Repeat Mode feature uses WDS (Wireless Distribution System). The channel and SSID on the remote Access Points must be the same as the TEW-450APB. The remote Access Point must also support WDS.

Note: WPA encryption is not supported on WDS links.

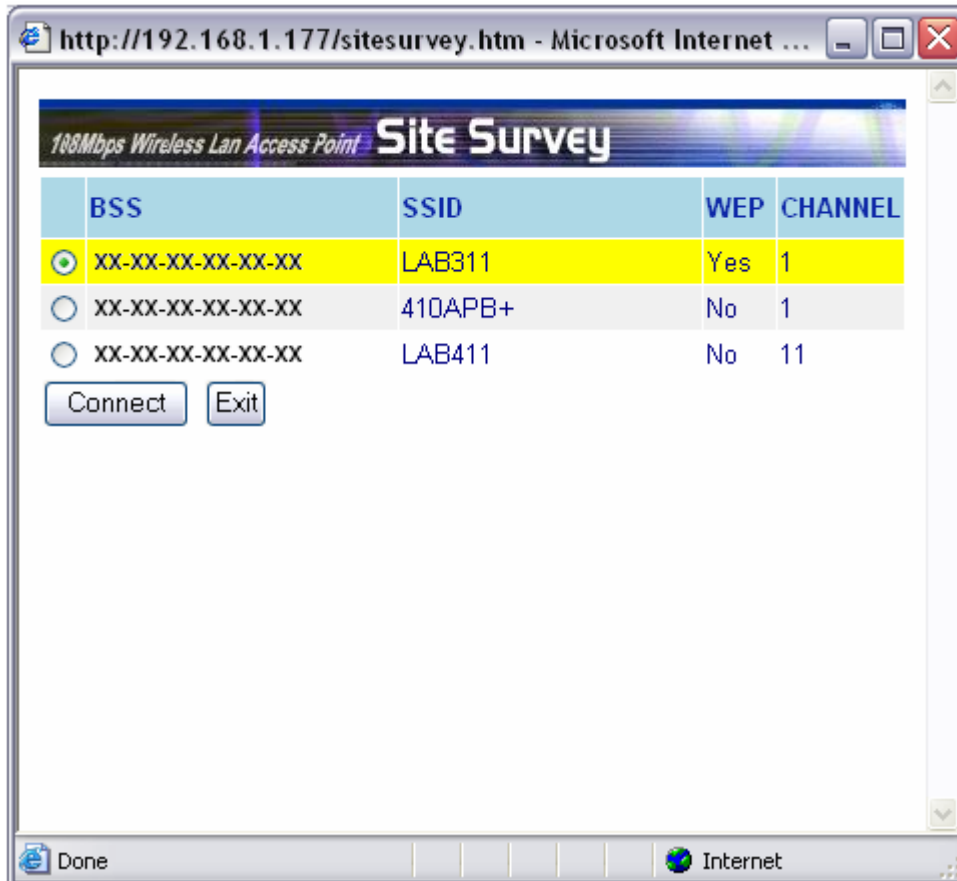
- 1) Open your web browser and type the IP address of the TEW-450APB in the address bar. The default IP address is 192.168.1.1. At the login, enter your username (admin) and password (admin).
- 2) Click on the Advanced Setting tab at the top of the page.



- 3) Select “Repeat Mode” and enter in the remote access point’s SSID into the “Remote AP SSID” field. Click “Apply” then back.

- 5) You can also click on the Site Survey button to display a list of available networks to connect to. Select the desired network and click “Connect”.

Note: If you have any pop-up blockers enabled it may prevent the Site Survey window from popping up.



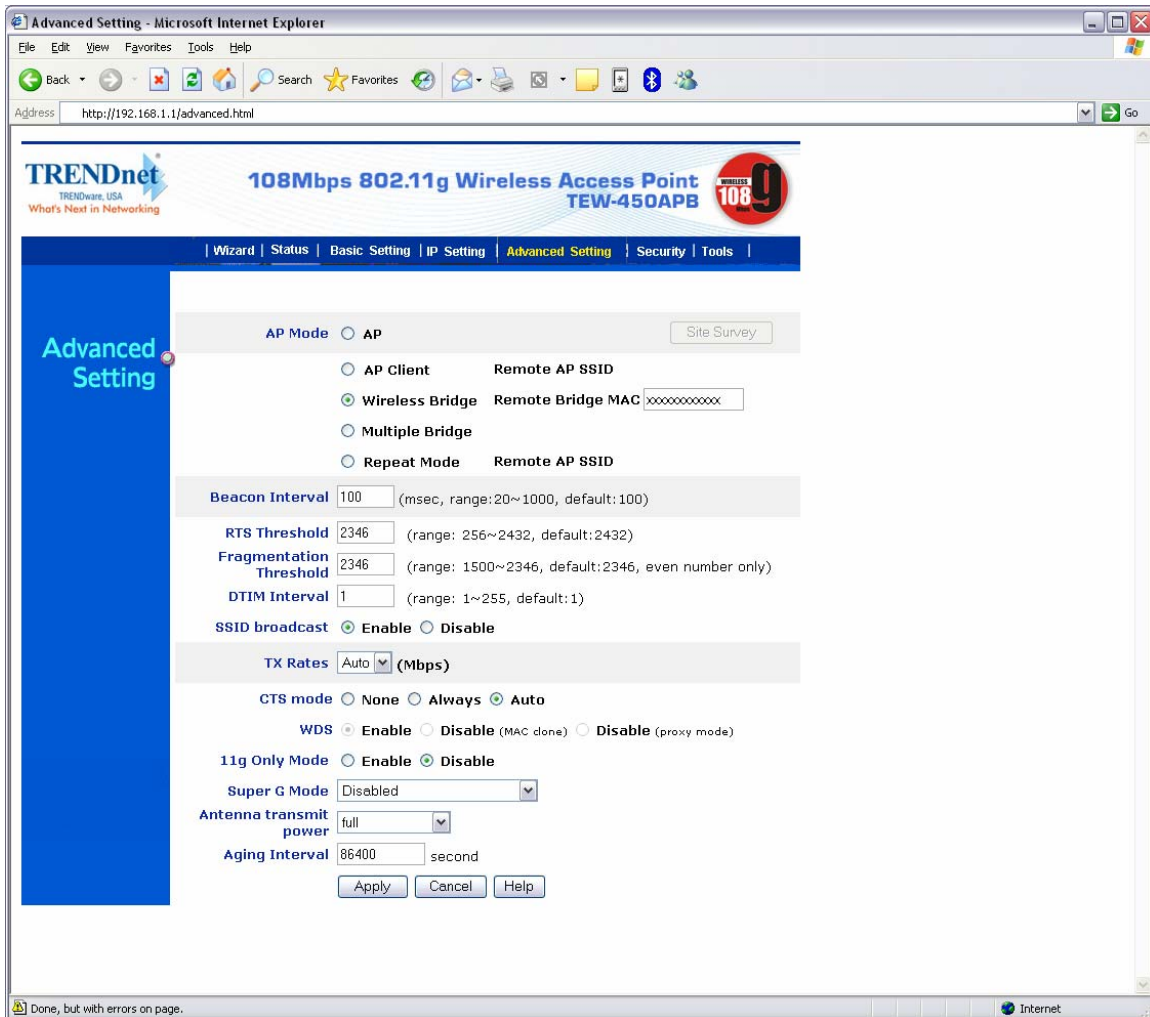
Q: How do I configure my TEW-450APB in “Wireless Bridge” mode?

A:

The Wireless Bridge feature uses WDS (Wireless Distribution System). The channel and SSID on the remote Access Points must be the same as the TEW-450APB. The remote Access Point must also support WDS.

Note: WPA encryption is not supported on WDS links.

- 1) Open your web browser and type the IP address of the TEW-450APB in the address bar. The default IP address is 192.168.1.1. At the login, enter your username (admin) and password (admin).
- 2) Click on the Advanced Setting tab at the top of the page.

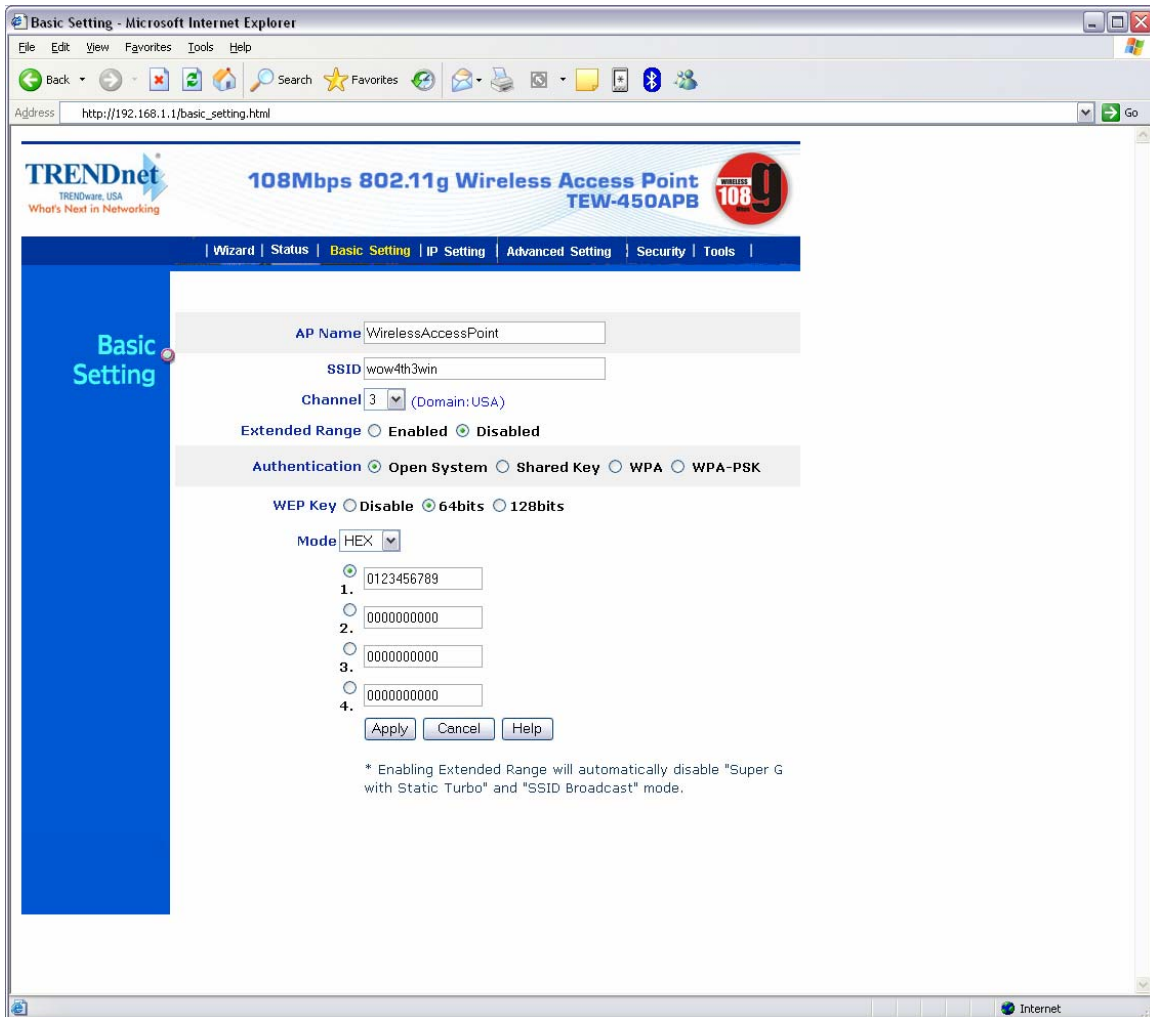


- 3) Select “Wireless Bridge” and enter in the remote Access Points MAC address into the “Remote Bridge MAC” field. Click “Apply” then back.

Q: How do I change the channel of my Access Point?

A:

- 1) Open your web browser and type the IP address of the TEW-450APB in the address bar. The default IP address is 192.168.1.1. At the login, enter your username (admin) and password (admin).
- 2) Click on the Basic Setting tab at the top of the page

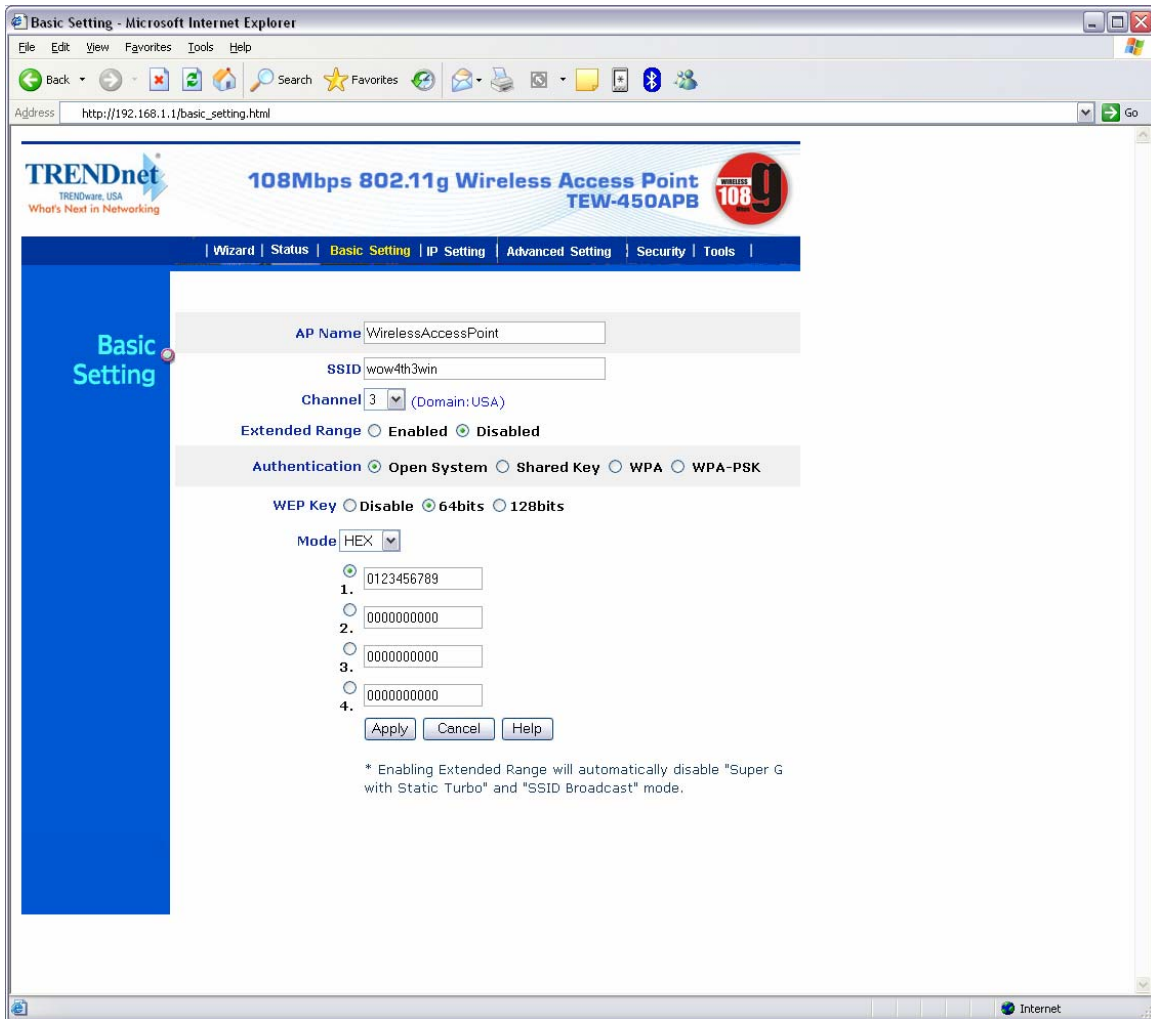


- 3) Choose a different channel from the drop down box next to the Channel field.
- 4) Click "Apply" then back.

Q: How do I change the SSID of my Access Point?

A:

- 1) Open your web browser and type the IP address of the TEW-450APB in the address bar. The default IP address is 192.168.1.1. At the login, enter your username (admin) and password (admin).
- 2) Click on the Basic Setting tab at the top of the page



Basic Setting - Microsoft Internet Explorer

Address: http://192.168.1.1/basic_setting.html

TRENDnet
TRENDware, USA
Who's Next in Networking

108Mbps 802.11g Wireless Access Point
TEW-450APB

Wizard | Status | **Basic Setting** | IP Setting | Advanced Setting | Security | Tools

Basic Setting

AP Name: WirelessAccessPoint

SSID: wow4th3win

Channel: 3 (Domain: USA)

Extended Range: Enabled Disabled

Authentication: Open System Shared Key WPA WPA-PSK

WEP Key: Disable 64bits 128bits

Mode: HEX

1. 0123456789

2. 0000000000

3. 0000000000

4. 0000000000

Apply Cancel Help

* Enabling Extended Range will automatically disable "Super G with Static Turbo" and "SSID Broadcast" mode.

Internet

- 3) Enter in your desired SSID in the SSID field.
- 4) Click "Apply" then back.