

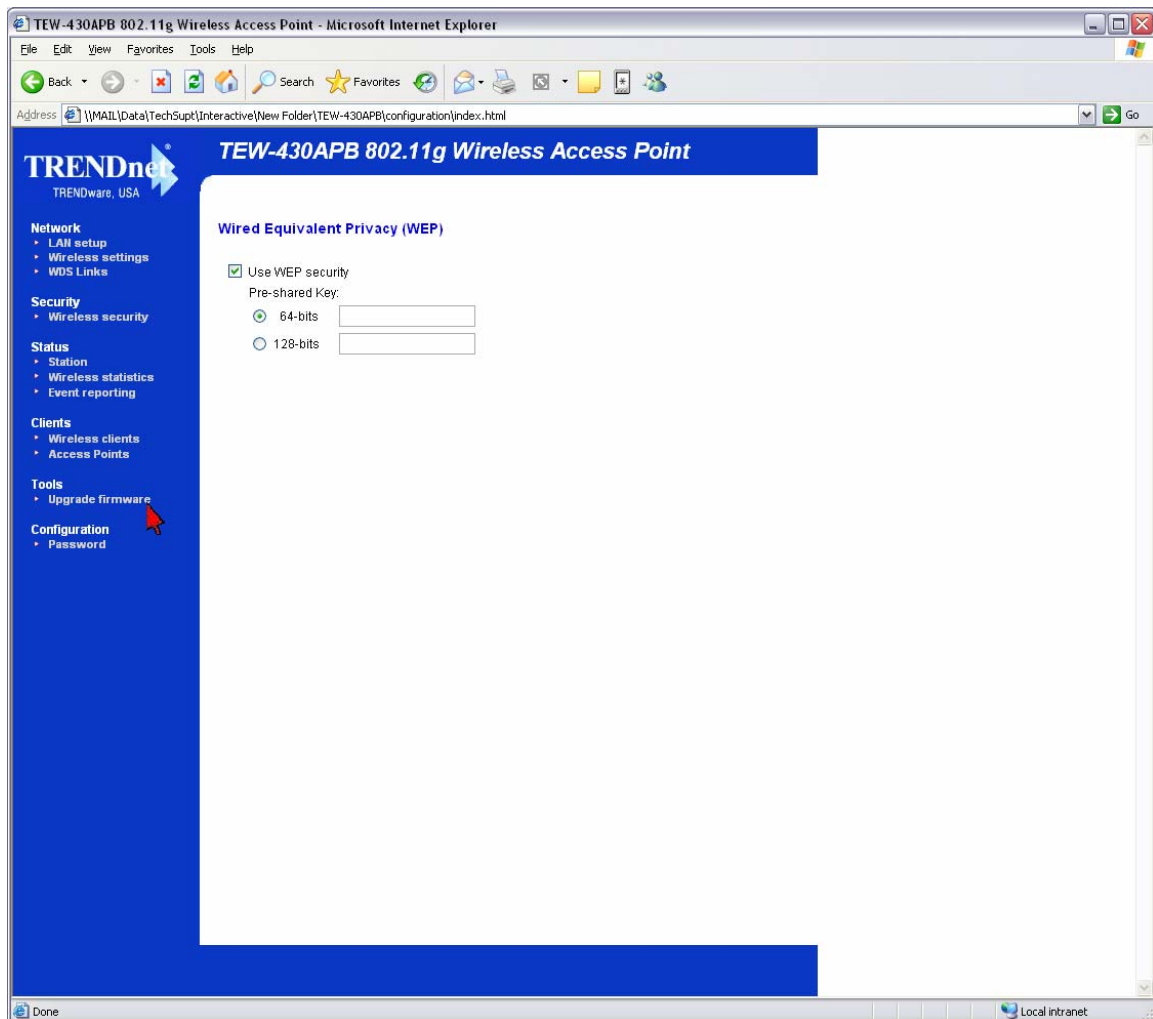
F.A.Q's for TEW-430APB

Q: Why can't I save my WEP key? There is no Apply button?

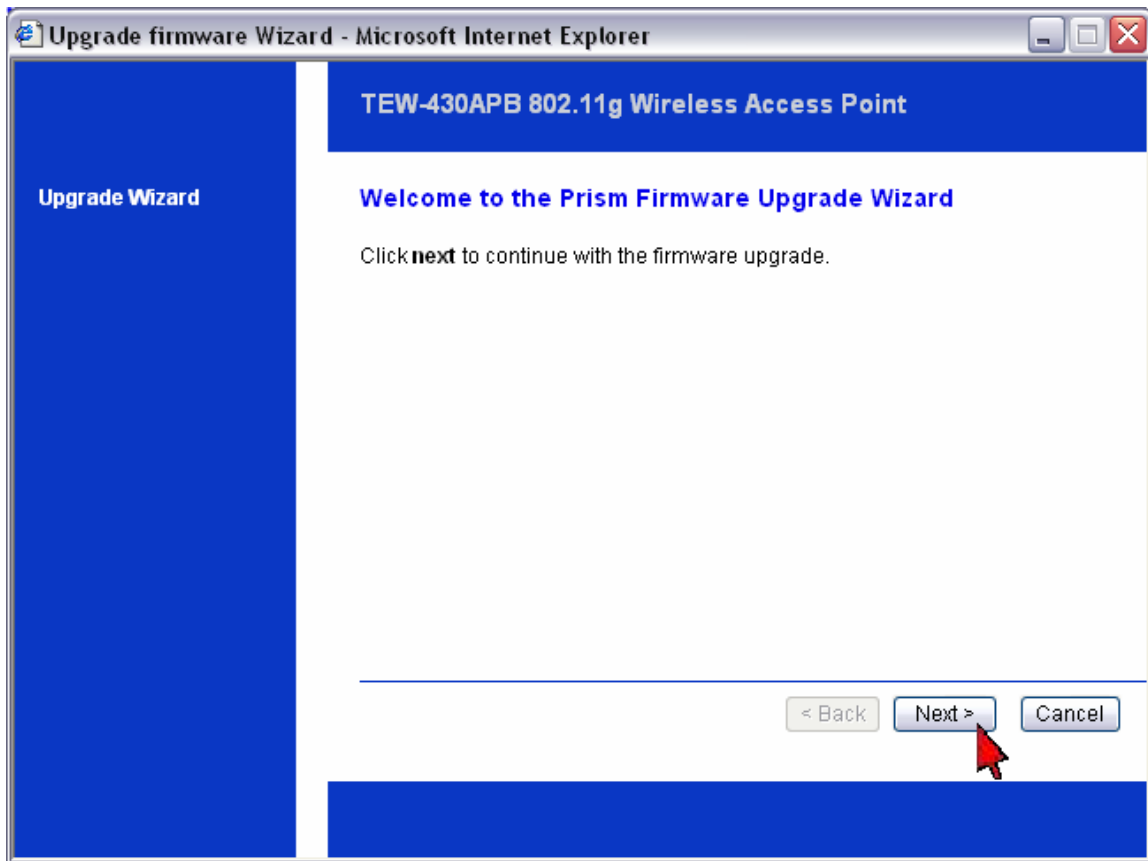
A: Download and extract the latest firmware for the TEW-430APB from our website [here](#).

DO NOT upgrade firmware on any TRENDnet product using wireless connection.
Firmware upgrade over wireless connection may damage the product. Please perform firmware upgrade with "wired" network connection only

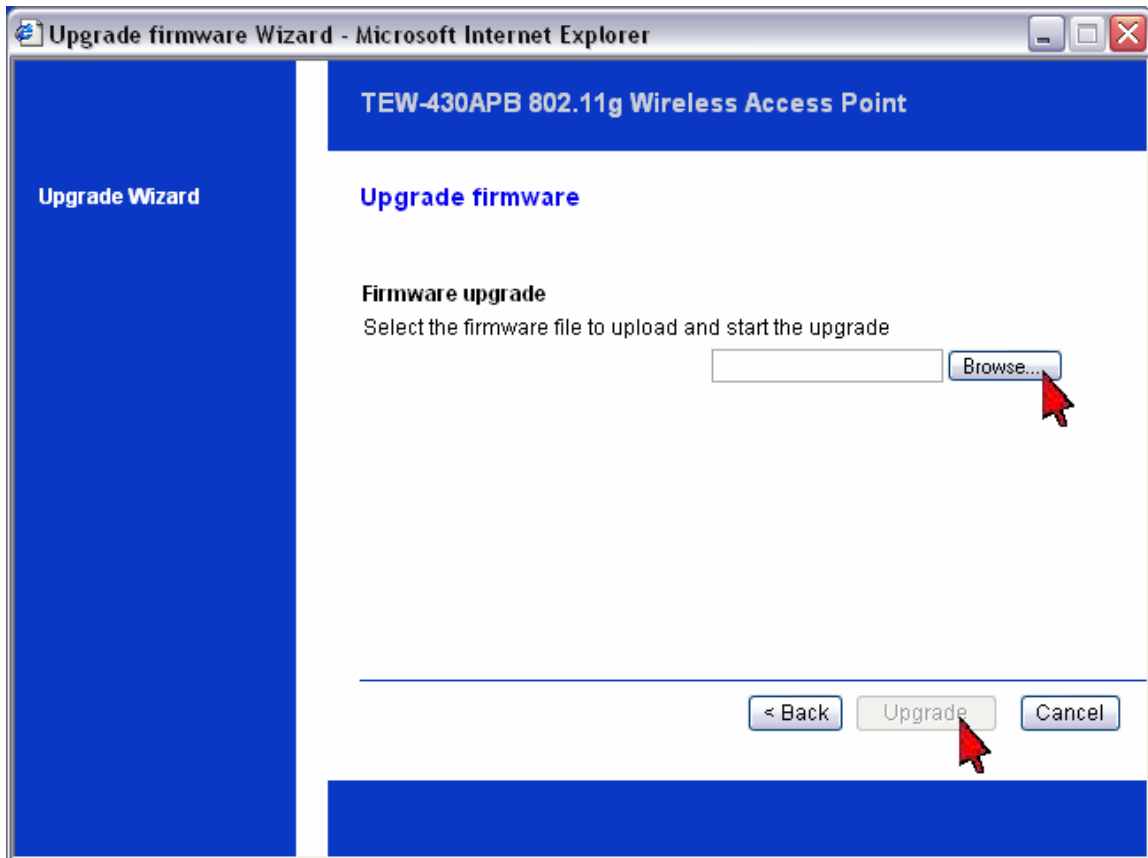
- 1) Open your web browser and type the IP address of the TEW-430APB in the address bar. The default IP address is 192.168.1.100. At the login, enter your username (blank) and password (blank).
- 2) Click on **Upgrade Firmware** under **Tools** on the left hand side.



- 3) Click **Next**.



- 4) Click **Browse**, locate and select the firmware that you previously downloaded then click **Upgrade**.



5) You should now have an **Apply** button to save your WEP key.