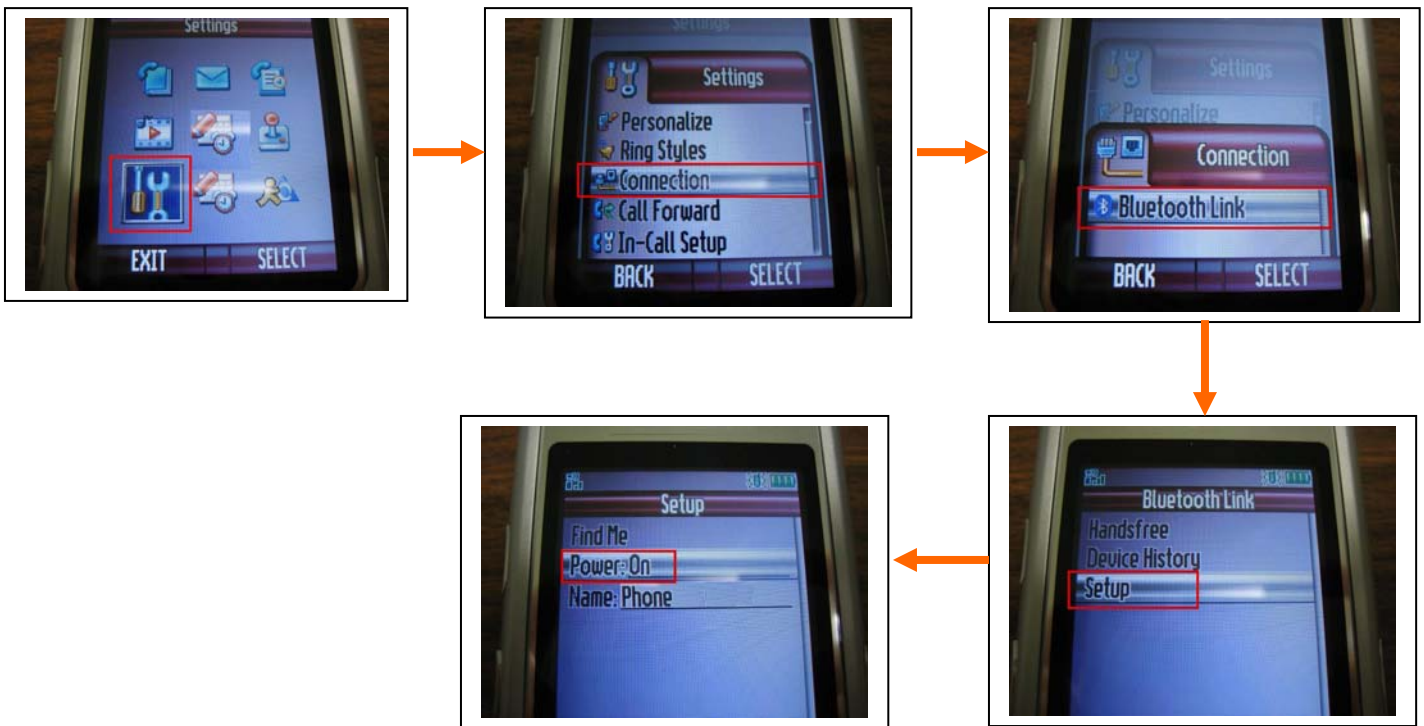


F.A.Q for TBW-101UB, TBW-102UB, and TBW-103UB

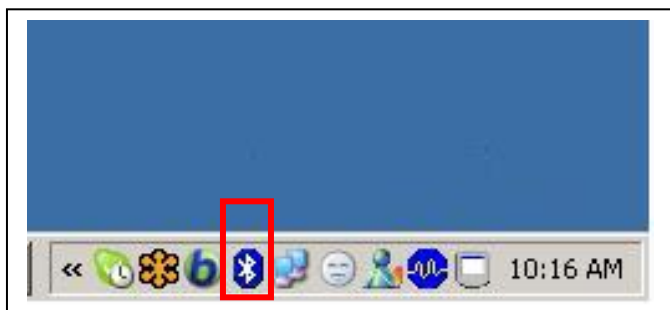
Q: How can I setup the Bluetooth adapter on my Computer to connect to my Mobile Phone and then use the phone to dial-up to my Internet Service Provider?

Step 1 Please consult with your Mobile Phone's manufacturer, make sure your Mobile Phone supports the "Bluetooth Dial-up Networking Service" and turn on the phone's "Bluetooth" service.

Below is an example on how to turn on the Mobile Phone's Bluetooth service with "Motorola Razor V3" phone.



Step 2 Install the Bluetooth adapter on the Computer according to the instructions in the Bluetooth Adapter's Quick Installation Guide. When the installation is completed, you should see the "Bluetooth" utility icon in the "Taskbar" on the lower right hand corner of the Windows Desktop. There should also be a "Bluetooth Utility" shortcut on Windows Desktop screen.

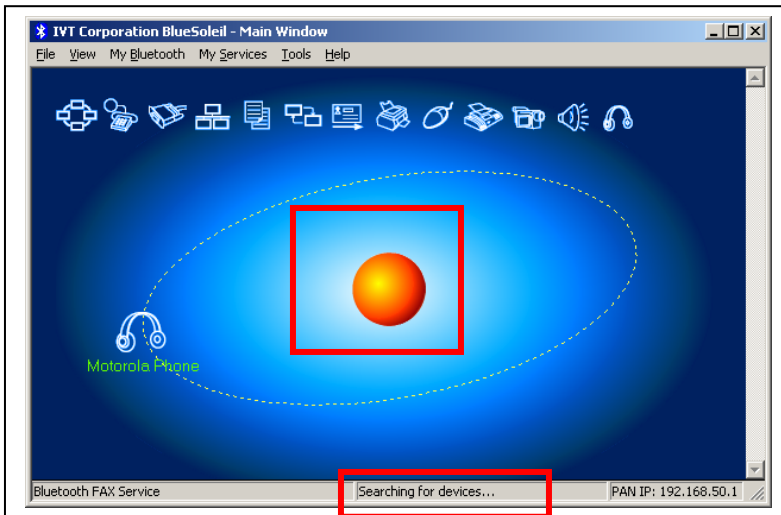


Bluetooth Utility Shortcut



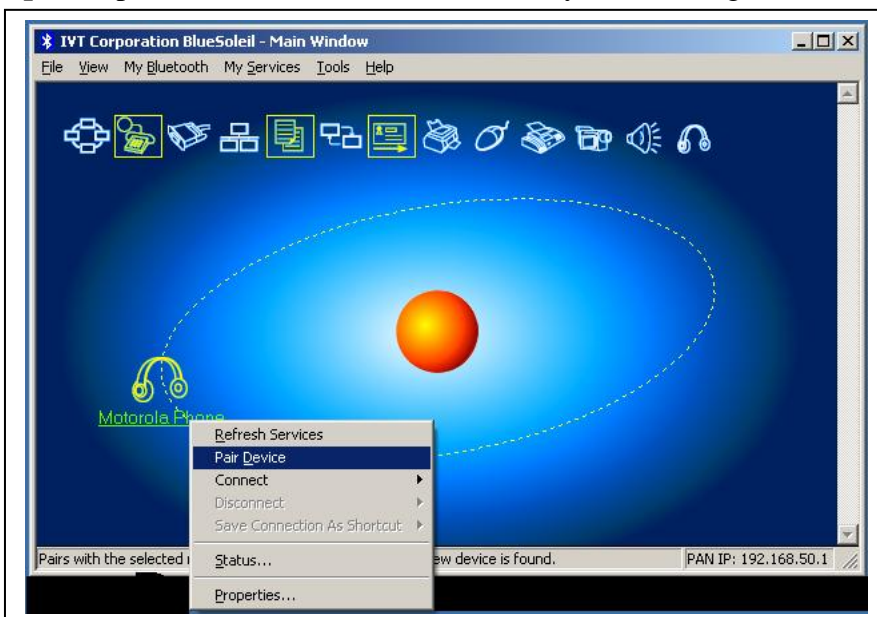
Step 3 Double-click on the Bluetooth utility icon or the shortcut to open the utility. The example below is using “IVT Corp. BlueSoleil” utility version 1.4.9.2 with a TBW-101UB (v2) Bluetooth Adapter.

Step 4 After opening the utility it will automatically search for any available Bluetooth devices nearby. Wait approximately 20 seconds and the search result will display at the bottom of the utility window. After the search has completed you can perform the search again by clicking once on the “Orange Globe” in the center of the utility.

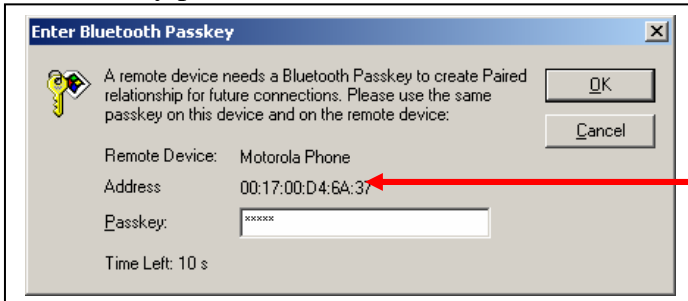


Step 5 In this example, the utility found the new Bluetooth device “Motorola Phone”. **Note:** when the utility discovers a device for the first time, instead of displaying the device name it may display the Mac Address (i.e. 11:22:33:ab:cd:ef) of the device and the device picture may not reflect the actual device. The utility may not display the name of the Bluetooth device, until it is “paired” (bonded) with the device.

Step 6 To pair with the device, from the utility window, right click on the device, and select “Pair Device”.



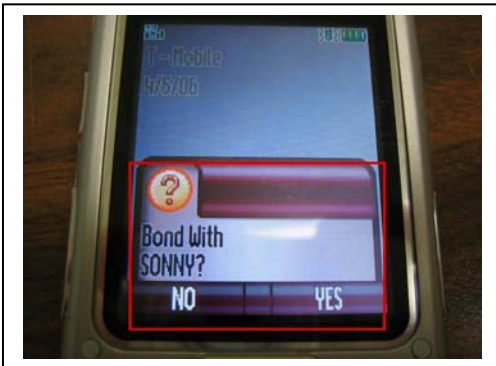
Step 7 Enter a passkey of your choice and click “Ok”. You must use the same passkey on the remote device as well to successfully pair to that device.



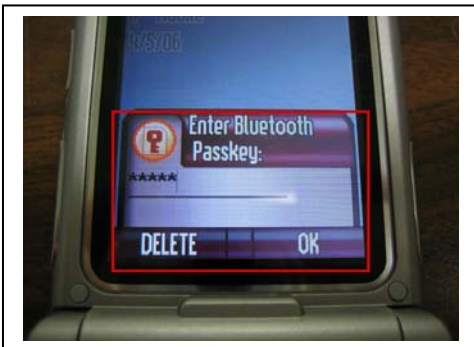
The Phone's Mac Address

Step 8 On the remote device (i.e. Mobile Phone), you will see a prompt asking if you would like to “Bond” (pair) to the Computer (SONNY), select “Yes”.

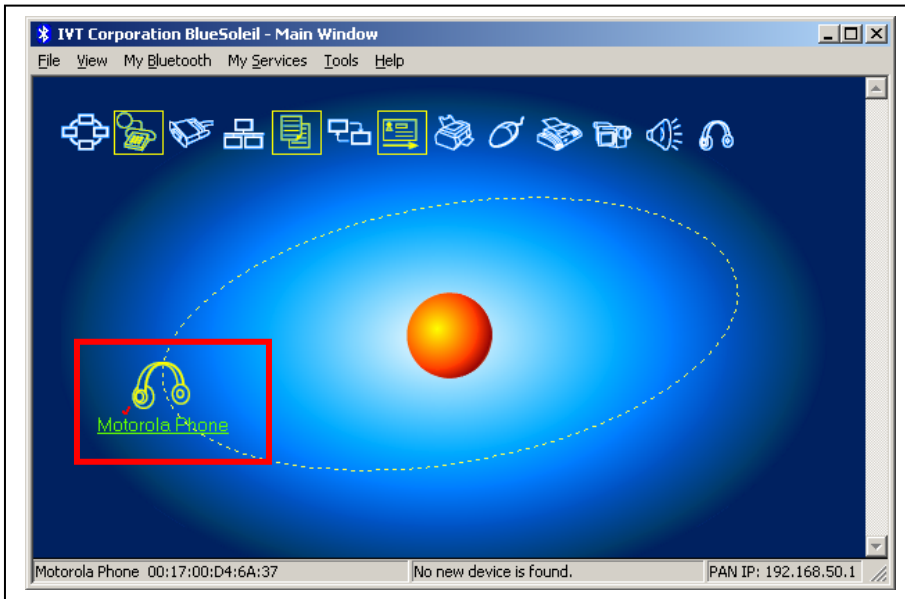
Note: when your phone's Bluetooth service is turned on, anyone with a Bluetooth device that is within your phone's Bluetooth signal range can request to “bond” to your phone. However, you can always “deny” the bond (pair) request from unrecognized device and turn off the Bluetooth service when you are not using it.



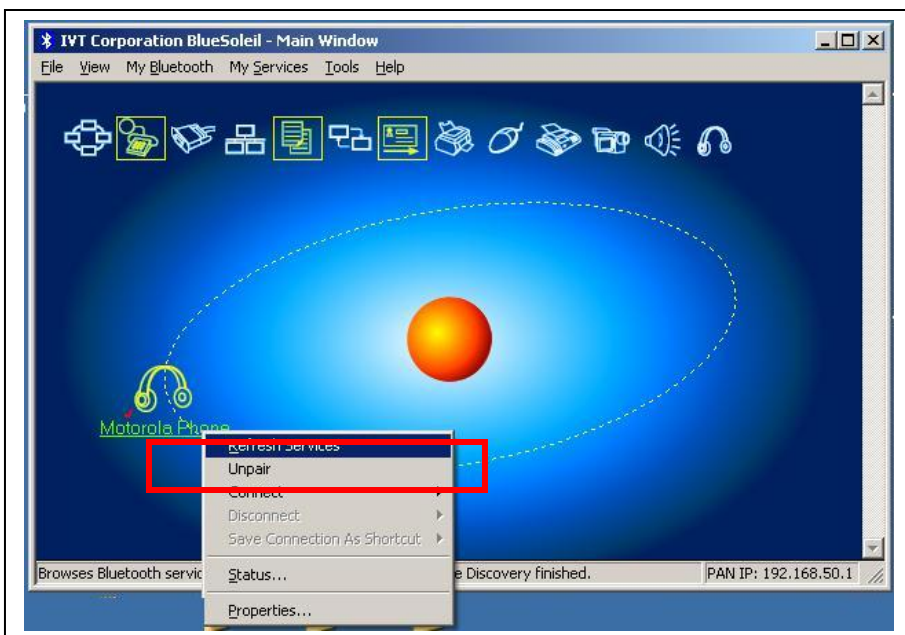
Step 9 Enter the same “passkey” from **Step 7** and select “Ok”.



Step 10 When the pairing is successful, in the utility window you should see a small red “check mark” on the device.



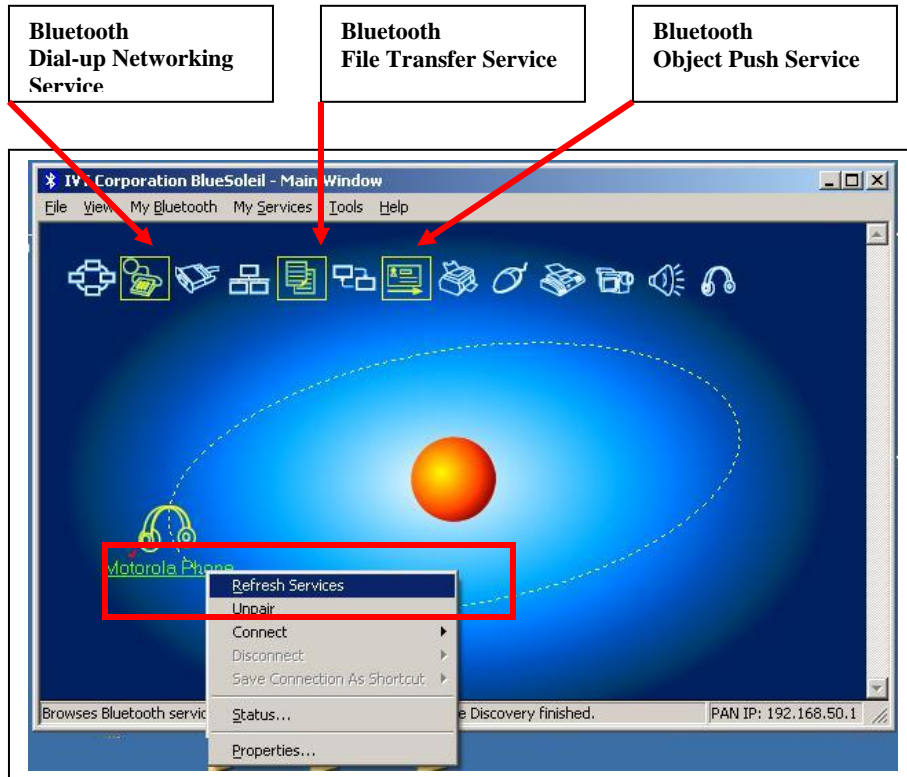
Note: To “Unpair” the devices. From the utility, right click on the device and select “Unpair” from the dropdown list.



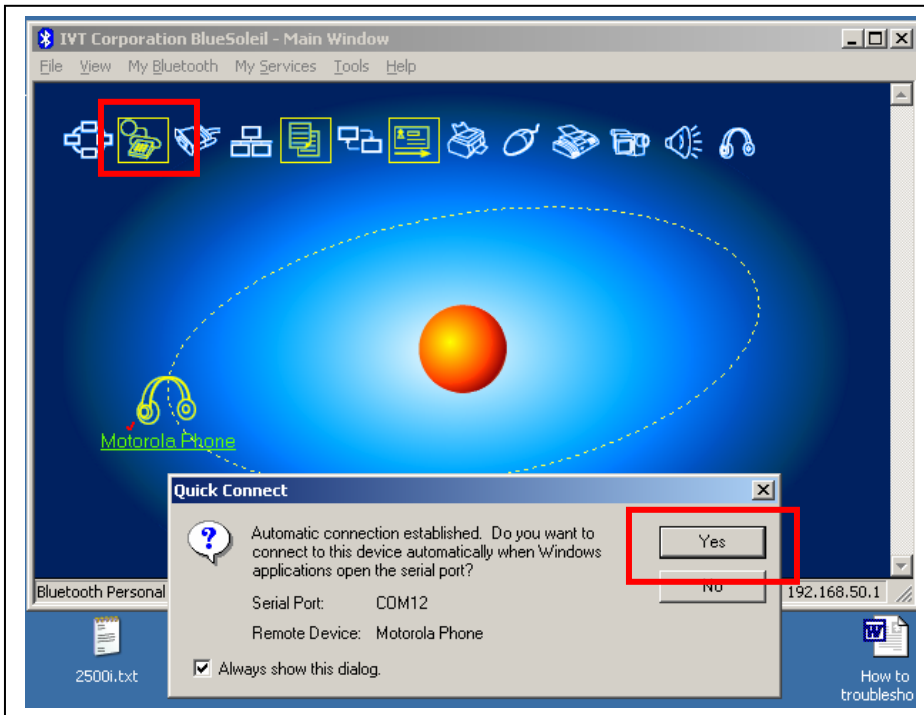
Step 11 After the computer’s Bluetooth adapter is paired to a Bluetooth device, the available “Services” of the Bluetooth device will be highlighted with a yellow outline. The example below shows that the Mobile Phone has three Bluetooth services.

Note: If the utility does not detect any Bluetooth services. From the utility, right click on the paired Bluetooth device and select “Refresh Services”. You may need to do this a few times for the utility to discover the device’s available services.

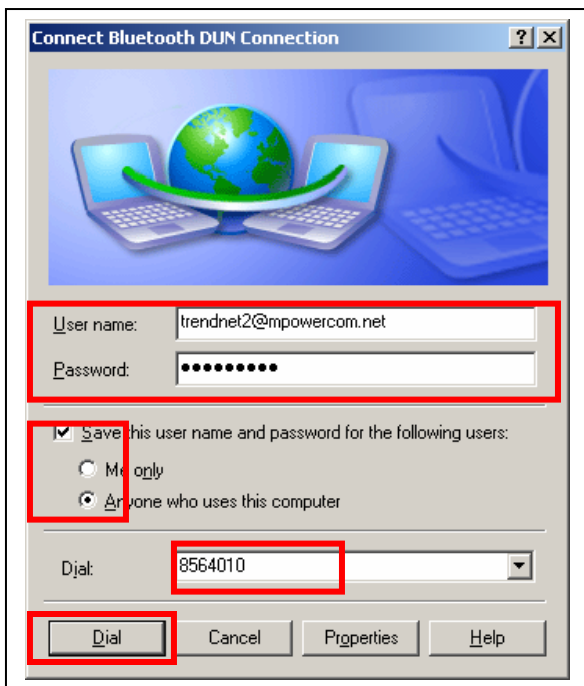
If the utility is having trouble finding the services, “Un-pair” the device, “Re-pair” it and then “Refresh Services”.



Step 12 Click on the “Bluetooth Dial-up Networking Service” and then click on “Yes” for “Quick Connect”.



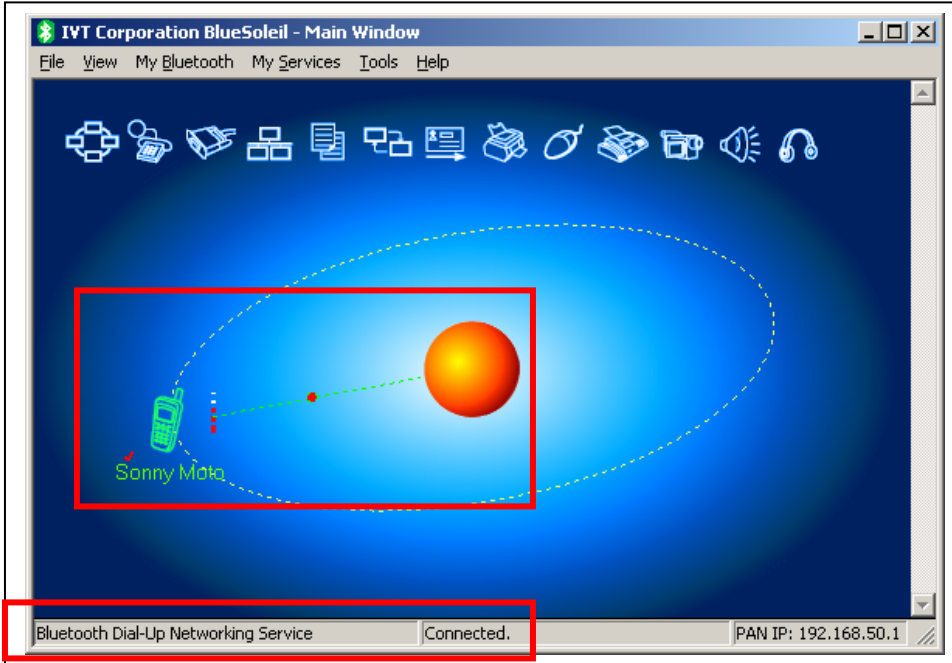
Step 13 In the “Connect Bluetooth DUN Connection”, type in the dial-up Internet Service User Name and Password. Select whether to save the info for you or for anyone uses this computer and then enter the Internet Service Provider’s telephone number (include any prefix and area code). Click on “Dial” to make the connection.



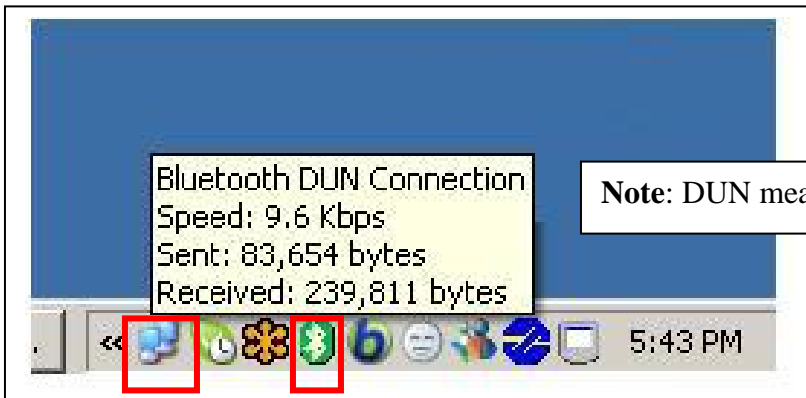
You should see the connection status on the computer's screen and the Mobile Phone should show that it is making a call.



Step 14 After the connection is made to the Internet Service Provider, the utility will display the “Bluetooth Dial-Up Networking Service” status as “Connected”.

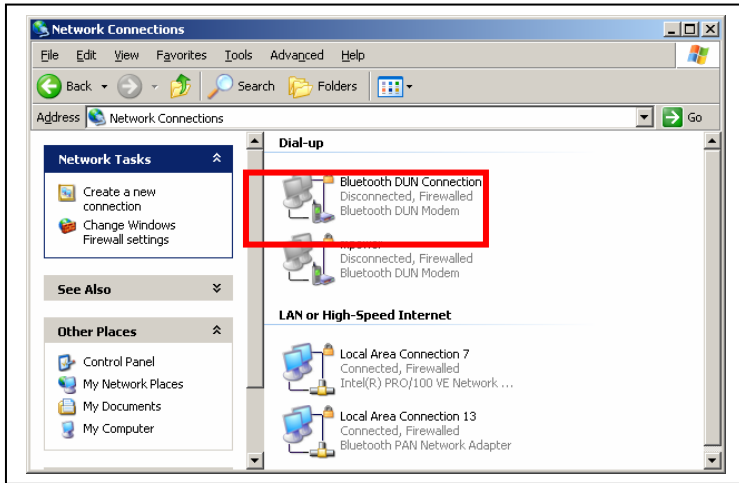


Also, in the “Taskbar”, you should see a new “Network Connection” icon and the Bluetooth icon should turn green. Placing the mouse over the “Network Connection” icon will display the connection status.



Note: DUN means “Dial Up Networking”

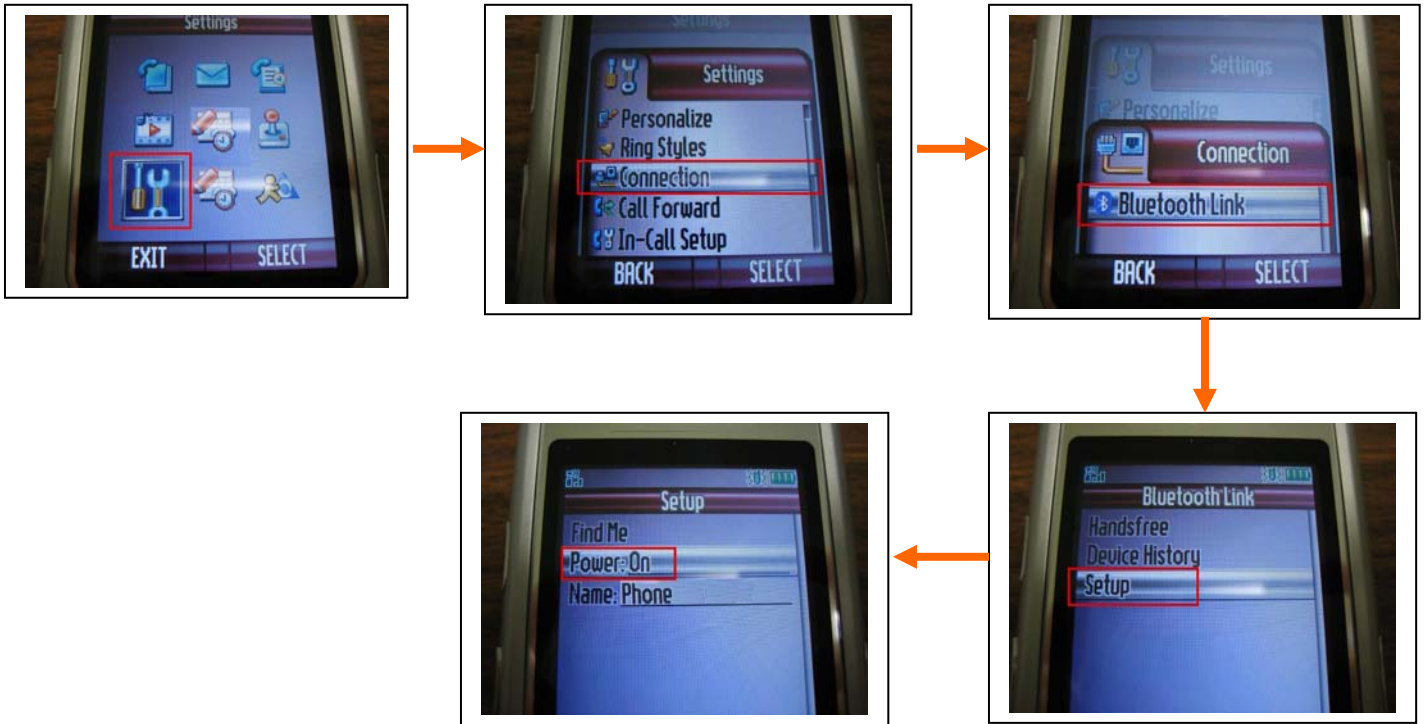
The “Bluetooth DUN Connection” is also added in Windows XP’s “Network Connections”.



Q: How do I transfer files between my Computer and my Mobile Phone using the Bluetooth Adapter?

Step 1 Please consult with your Mobile Phone's manufacturer, make sure your Mobile Phone supports the "Bluetooth File Transfer Services" and then turn on the phone's "Bluetooth" service

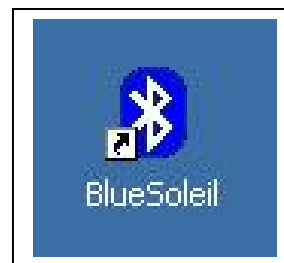
Below is an example on how to turn on the Mobile Phone's Bluetooth service with a "Motorola Razor V3" phone.



Step 2 Install the Bluetooth adapter on the Computer according to the instructions in the Bluetooth Adapter's Quick Installation Guide. When the installation is completed, you should see the "Bluetooth" utility icon in the "Taskbar" on the lower right hand corner of the Windows Desktop. There should also be a "Bluetooth Utility" shortcut on Windows Desktop screen.

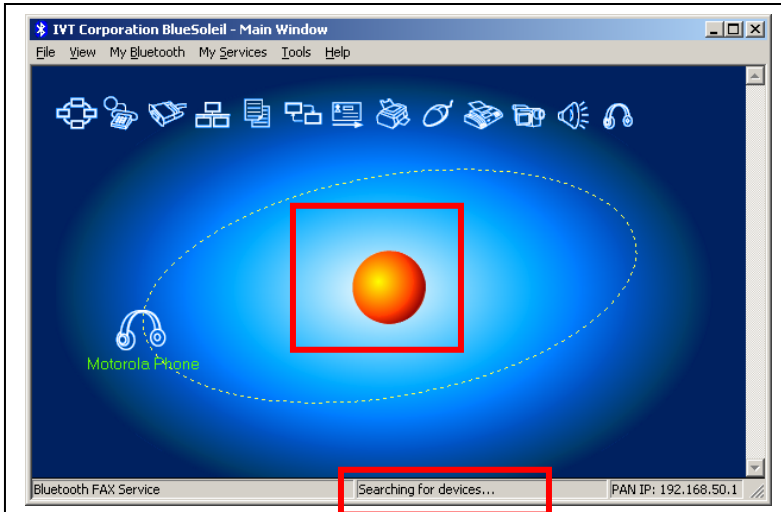


Bluetooth Utility Shortcut



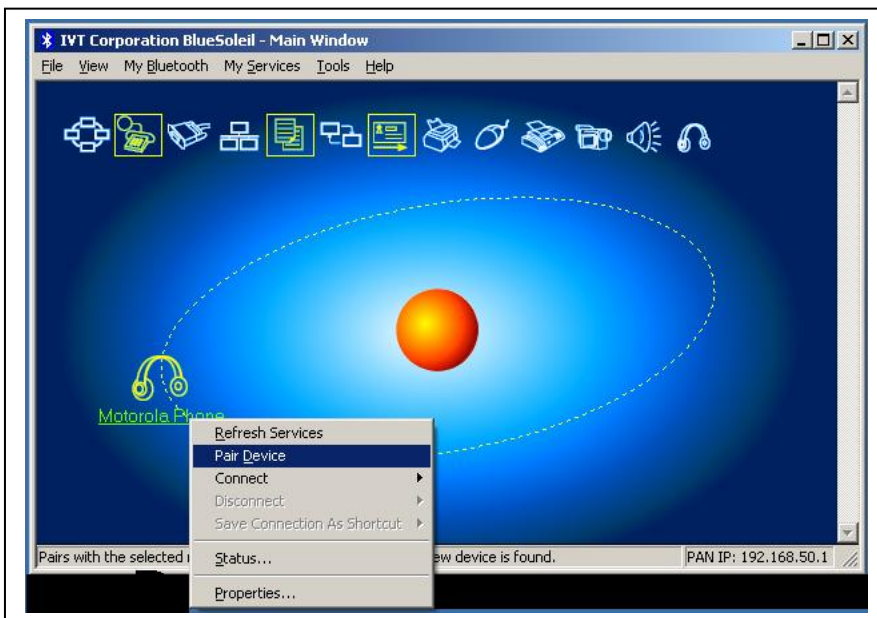
Step 3 Double-click on the Bluetooth utility icon or the shortcut to open the utility. The example below is using "IVT Corp. BlueSoleil" utility version 1.4.9.2 with a TBW-101UB(v2) Bluetooth Adapter.

Step 4 After opening the utility it will automatically search for any available Bluetooth devices nearby. Wait for approximately 20 seconds and the search result will display at the bottom of the utility window. After the search is completed, you can perform the search again by clicking once on the “Orange Globe” in the center of the utility.

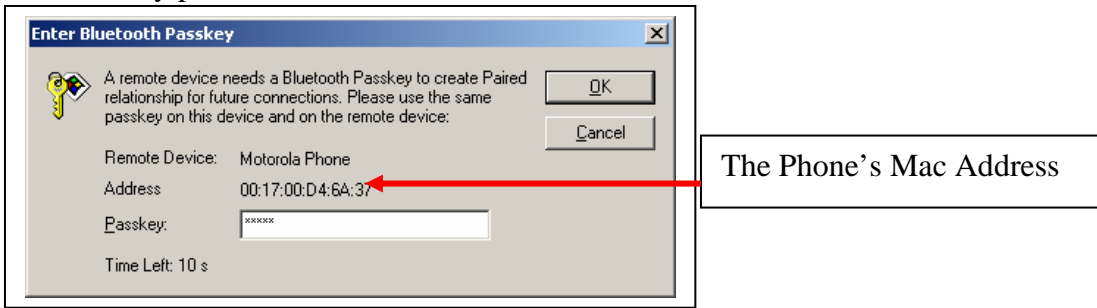


Step 5 In this example, the utility found the new Bluetooth device “Motorola Phone”. **Note:** When the utility discovers a device for the first time, instead of displaying the device’s name, it may display the Mac Address (i.e. 11:22:33:ab:cd:ef) of the device and the device picture may not reflect the actual device. The utility may not display the name of the Bluetooth device, until it is “paired” (bonded) with the device.

Step 6 To pair with the device, from the utility window, right click on the device, and select “Pair Device”.

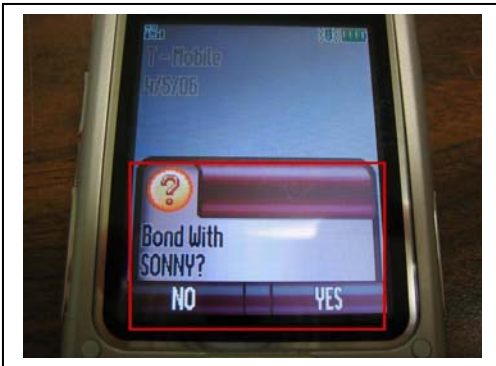


Step 7 Enter a passkey of your choice and click “Ok”. You must use the same passkey on the remote device as well to successfully pair to that device.

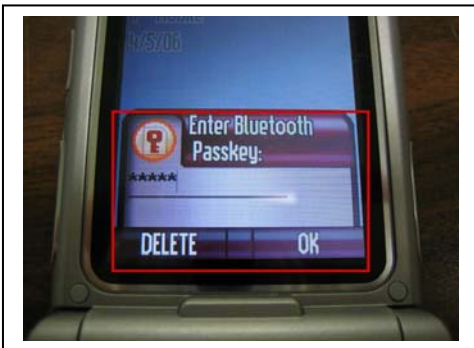


Step 8 On the remote device (i.e. Mobile Phone), you will see a prompt asking if you would like to “Bond” (pair) to the Computer (SONNY), select “Yes”.

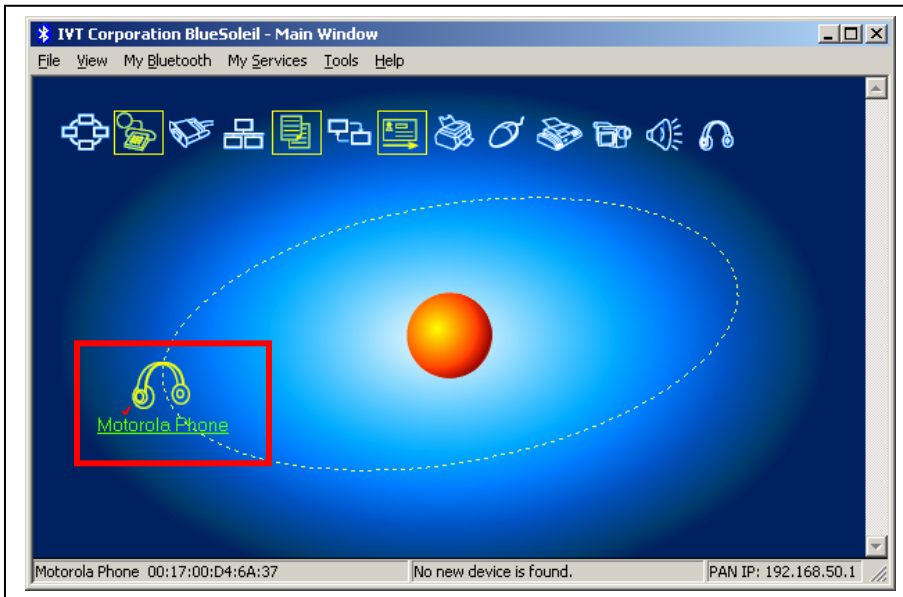
Note: when your phone’s Bluetooth service is turned on, anyone with a Bluetooth device that is within your phone’s Bluetooth signal range can request to “bond” to your phone. However, you can always “deny” the bond (pair) request from unrecognized device and turn off the Bluetooth service when you are not using it.



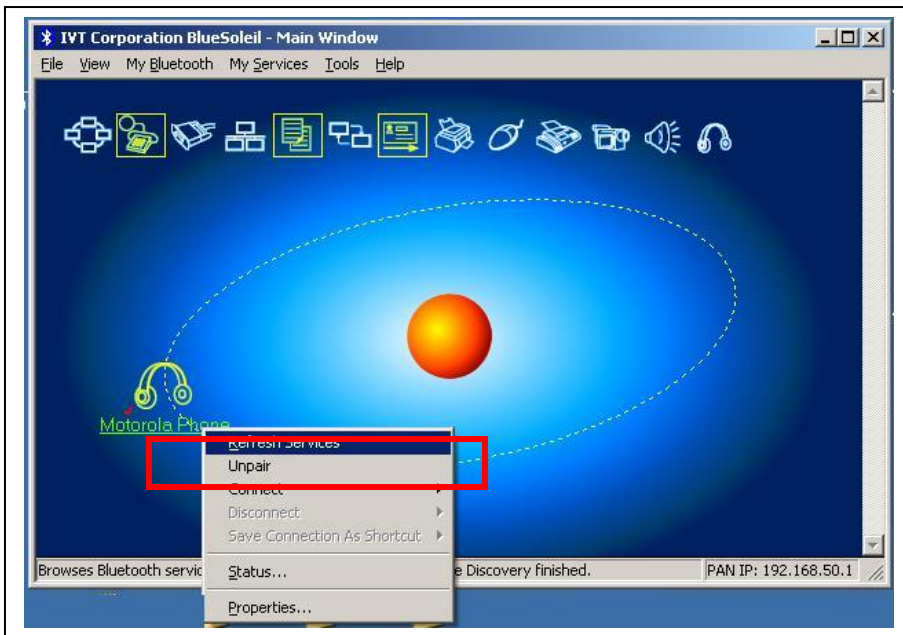
Step 9 Enter the same “passkey” from **Step 7** and select “Ok”.



Step10 When the pairing is successful, in the utility window, you should see a small red “check mark” on the device.



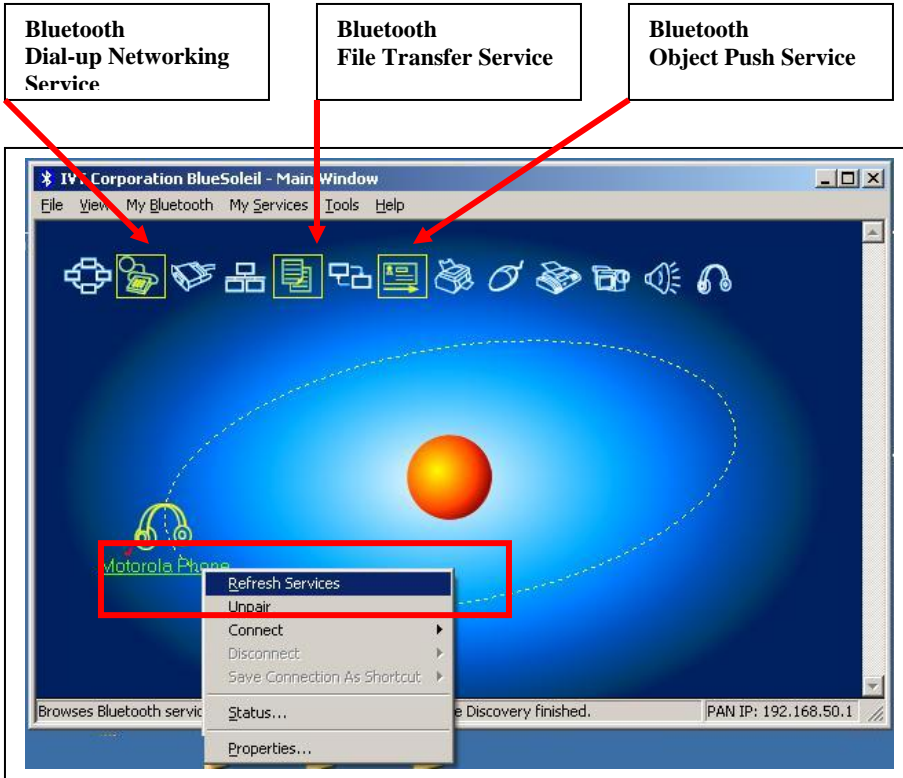
Note: To “unpair” the device, from the utility, right click on the device and select “Unpair” from the dropdown list.



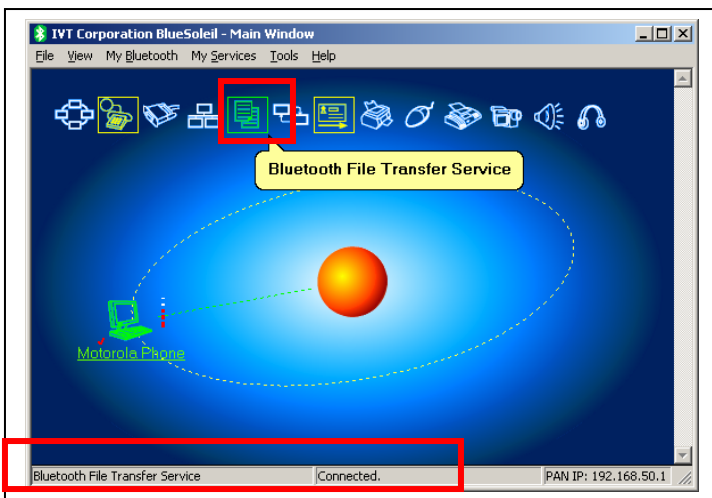
Step 11 After the computer’s Bluetooth adapter pairs to a Bluetooth device, the available “Services” of the Bluetooth device will be highlighted with a yellow outline. The example below shows the Mobile Phone has three Bluetooth services.

Note: If the utility does not detect any Bluetooth services, from the utility, right click on the paired Bluetooth device, and select “Refresh Services”. You may need to do this a few times for the utility to discover the device’s available services.

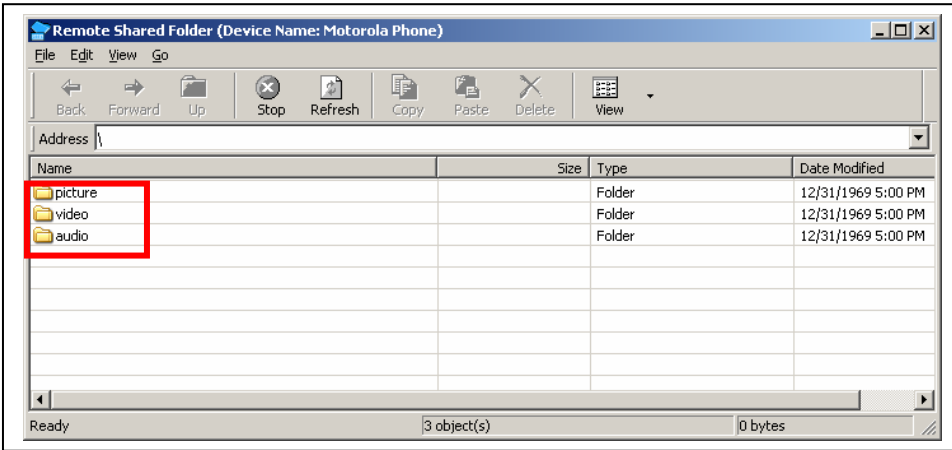
If the utility is having trouble finding the service, “Un-pair” the device; “Re-pair” it and then “Refresh Services”.



Step 12 From the utility, click once on the “Bluetooth File Transfer Service” to connect to the service. You should see the connection status at the bottom of the Utility.



Step 13 After the service is connected; you should see the window on the screen showing the shared folders in the Mobile Phone.



Double-click on the file folder to reveal the folder’s contents. You can then drag a file from your Computer and copy it to the folder in the Mobile Phone. Or delete the file from the folder.

You can also copy the file(s) from the phone to the computer.

