



TW100-W2plus **10/100Mbps Fast Ethernet Internet Station**

TRENDnet's TW100-W2plus Internet Station allows a group of users to share Internet connections using common external modems/ISDN terminal adapters. This device eliminates the need for a separate modem, phone line, and Internet account for each individual user. Equipped with two COM ports, users can connect two external modems/ISDN terminal adapters at the same time to double the Internet bandwidth. Easy local network connection is achieved through a 10/100Mbps NWay port that supports both Ethernet and Fast Ethernet networks. With TRENDnet's TW100-W2plus Internet Station, significant savings on router costs, phone line charges, and on-line charges will be made!!



FEATURES

- Two RS-232 460Kbps baud rate COM ports
- 56Kbps modems/128Kbps BRI ISDN TA support
- Bandwidth doubling through simultaneous use of two COM ports
- One auto-sensing 10/100Mbps LAN port
- One or two ISP account sharing for Internet users
- Modem/ISDN TA sharing
- PPP, PAP/CHAP, NAT, TCP/IP, DHCP support
- Dial-on-demand, idle-time auto-disconnection
- Firewall protection and PPP security
- Virtual server lets Internet users access designated local sites
- Administer through Telnet, Web browser, and Windows-based program
- Flash memory for firmware upgrade
- 5 Year warranty

BENEFITS

- **Easy Integration:**
Designed to easily integrate into 10/100Mbps Ethernet network
- **Cost-Effectiveness:**
Saves router costs, on-line charges - less cost than a class C IP address
- **Flexibility:**
Can be used in either LAN or WAN
- **Security:**
Built-in firewall and secure gateway for LAN users
- **Performance:**
Asynchronous WAN ports support up to 460Kbps data transfer



TW100-W2plus

10/100Mbps Fast Ethernet Internet Station

SPECIFICATIONS

LAN Standard:

- IEEE 802.3 10Base-T Ethernet, IEEE 802.3u 100Base-TX Fast Ethernet, and ANSI/IEEE 802.3 N-way auto-negotiation

LAN Ports:

- 1 x 10/100Mbps Ethernet/Fast Ethernet NWay port

Network Cables:

- CAT 3, 4, 5 UTP/STP for 10Base-T (max. 100M)
- CAT5 UTP/STP 100Base-TX (max. 100M)

Protocol:

- CSMA/CD

LEDs:

- Pw/Tx (Power/Transmit), Link/Rx (Link/Reception), COM1, COM2

WAN Ports:

- 2 x male DB-9 RS-232 COM ports

COM Port Baud Rates:

- Up to 460Kbps, analog modem supports up to 56Kbps, ISDN TA supports BRI 128Kbps

Internet Protocol:

- PPP, PAP/CHAP, NAT, TCP/IP, DHCP, ARP, ICMP, FTP, Telnet, HTTP

Power Supply:

- External AC power adapter, 5VDC / 2.4A

Power Consumption:

- 12 Watts max.

Dimensions:

- 223.3 x 131.7 x 35 mm (8.79 x 5.19 x 1.38 inches)

Weight:

- 430 g. (15.2 Oz.)

Temperature:

- Operating: 0° to 50° C (32° to 122°F)
- Storage: -25° to 55° C (-13° to 131°F)

Humidity:

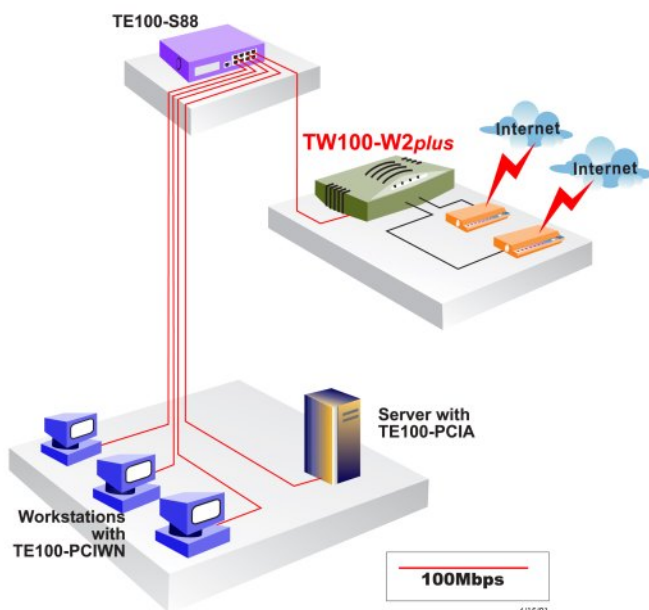
- Operating: 10 % to 90 %
- Storage: 5 % to 95 % (non-condensing)

Certifications:

- FCC, CE, VCCI



NETWORKING SOLUTIONS



PRODUCT INFORMATION

- *** TW100-W2plus:
2-port 10/100Mbps Fast Ethernet
Internet Station

ORDERING INFORMATION

TRENDware International, Inc.
3135 Kashiwa Street
Torrance, CA. 90505. USA
Tel: 310-891-1100
Fax: 310-891-1111
Web: www.TRENDNET.com
Email: sales@trendware.com



To Order Please Call:
1-888-326-6061