

TFM-560E **High Performance PCMCIA Fax Modem**

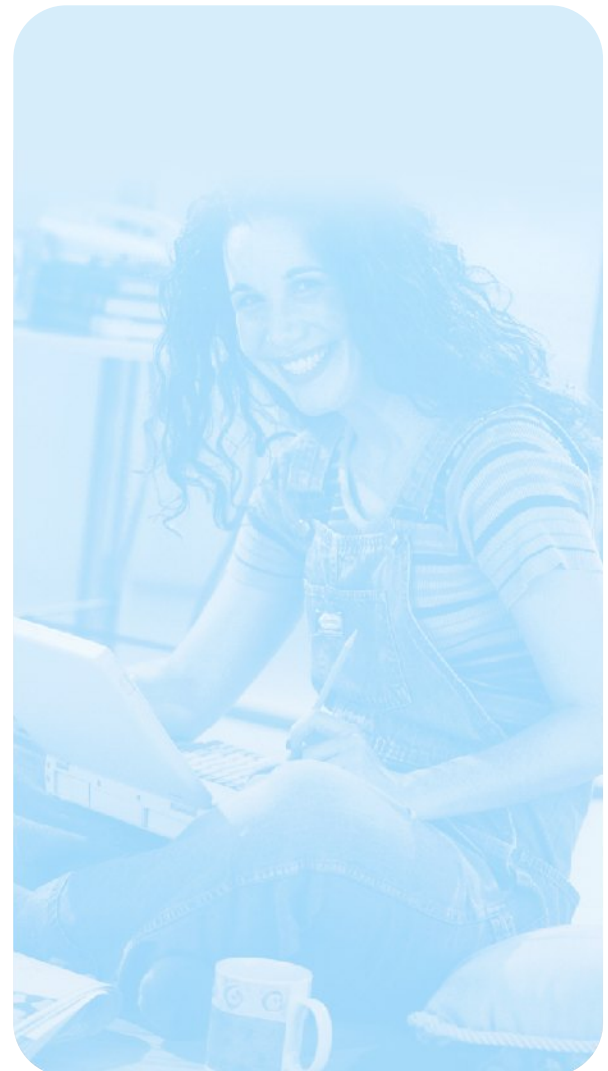
TRENDware's TFM-560P/TFM560E is the latest in communication innovation. The TFM-560P/TFM560E is a K56flex and V.90 ultra fast 56Kbps data/fax modem that provides users with the highest possible data communication rates, reliable error-free transmissions, and widespread interoperability with other users. The TFM-560P/TFM560E also supports Group 3 fax send and receive functions. This fax/modem complies with the PCMCIA Type II slot standard and is ideal for on-the-go notebook users.

Communication software is included free with the TFM-560P/TFM560E for quick and easy startup. The TFM-560P/TFM560E is also compatible with all communication software capable of utilizing the Hayes 'AT'-command set.



FEATURES

- > PCMCIA 2.1/JEIDA 4.1 compliant
- > High performance 16C550A compatible UART
- > Hayes 'AT'-command compatible
- > Advanced Plug and Play technology to run with Windows 95/98/ME/2000/XP
- > Data and fax software for Windows included
- > Automatic sleep mode to extend PC battery life
- > RJ-11 cable with internal DAA for direct connection to the telephone wall socket
- > High speed 56Kbps data and 14.4Kbps fax communication
- > Industry standard protocol for data compression and error correction
- > 5 Year Warranty



TFM-560E

High Performance PCMCIA Fax Modem

SPECIFICATIONS

Operating Protocol:

- K56flex (56,000 bps)
- V.34bis (33,600 bps)
- V.34 (28,800 to 2,400 bps)
- V32bis (14,400/12,000/9,600/7,200 bps);
- V.32 (9,600/4,800 bps)
- V.22bis (2,400 bps)
- V.23 (1,200 TX/75 RX bps)
- V.22/Bell 212A (1,200 bps)
- V.21/Bell 103 (300bps)

Error Correction Protocol:

- V.42 and MNP Class 2 to 4

Data Compression Protocol:

- V.42bis and MNP Class 5

Fax Compatibility:

- EIA Class 1 fax commands
- Group 3 send and receive
- ITU-T V.17 up to 14,400 bps
- ITU-T V.29 up to 9,600 bps
- ITU-T V.27ter up to 4,800 bps
- ITU-T V.21 Channel 2 up to 300 bps

Dialing Capability:

- DTMF tone; Rotary pulse

Operating Modes:

- Asynchronous full duplex
- Manual/automatic answer

Flow Control:

- Hardware CTS/RTS
- Software XON/XOFF

Receive Sensitivity:

- -40 dBn

Transmit Level:

- Permissive -10 (\pm) 1 dBm

Line Interface:

- RJ-11, 2-wire dial-up

Typical Power Consumption:

- Operation: 640mW;
- Sleep mode: 80mW

Diagnostic:

- Power-up self-test; Local analog loopback test; Local analog loopback with self-test; Local digital loopback test; Remote digital loopback test; Remote digital loopback with self-test

Software Control Interface:

- Hayes compatible AT command set

Call Progress Monitoring:

- Dial tone; Busy tone
- Ringback detection

Dimension:

- Comply with PCMCIA Type II; 3.37" x 2.128" x 0.197" (85.6mm x 54mm x 5mm)

Weight:

- 35g



PRODUCT INFORMATION

- **TEM-560T:** PCMCIA Ethernet (TP) + 56Kbps Fax Modem
- **TFM-560P:** PCMCIA 56K (V.90) High Speed Fax Modem (Lucent Chipset)
- **TFM-560E:** PCMCIA 56K (V.90) High Speed Fax Modem (Lucent Chipset)
- **TEM100-56:** PCMCIA 10/100Mbps Fast Ethernet + 56Kbps Fax Modem Card

ORDERING INFORMATION



TRENDware International, Inc.
3135 Kashiwa Street
Torrance, CA. 90505. USA
Tel: 310-891-1100
Fax: 310-891-1111
Web: www.TRENDNET.com
Email: sales@trendware.com

To Order Please Call:
1-888-326-6061