



## **TEG-S80TXE** **8-Port 10/100/1000Mbps Copper Gigabit Switch**

TRENDnet's TEG-S80TXE Copper Gigabit Ethernet Switch with External Power Supply consist of eight 10/100/1000Mbps Copper Gigabit Ethernet ports with Auto-negotiation and Auto-MDIX features. The Switch offers a reliable and affordable LAN solution to meet immediate bandwidth demand. Users can connect Server(s) to the Gigabit port(s) to increase network performance or cascade Copper Gigabit Switches together to create high-bandwidth Gigabit backbones. TRENDnet's TEG-S80TXE provides simple migration, scalability and flexibility to handle new applications and data types, making it a highly reliable and cost effective solution for high-speed network connectivity.



### **FEATURES**

- 8 x 10/100/1000Mbps Auto-Negotiation, Auto-MDIX Gigabit Ethernet Ports
- Full/Half-duplex transfer mode for 10/100Mbps, Full-Duplex mode for 1000Mbps
- Store-and-Forward switching method
- Wire-speed reception and transmission
- IEEE 802.3x flow control for full-duplex mode
- Back pressure flow control for half-duplex mode
- Integrated address Look-Up engine, supports 4K MAC addresses
- Built-in 128KB RAM Buffer
- Extensive front-panel diagnostic LEDs
- External Power Supply
- Sturdy metal housing
- 5-Year warranty

### **BENEFITS**

- **Performance:**  
Each port provides 1000Mbps Gigabit connection to Power Server or another Gigabit Switch.
- **Flexibility:**  
All ports automatically negotiate 10/100/1000Mbps network speed. All ports support Auto-MDIX media type detection (connect with either straight through or a crossover cable).
- **Expandability:**  
Uplink to other Gigabit Switches to create Gigabit backbones.
- **Effectiveness:**  
Provides Gigabit Performance at an affordable price.



# TEG-S80TXE

## 8-Port 10/100/1000Mbps Copper Gigabit Switch

### SPECIFICATIONS

#### Standards:

- IEEE 802.3 10Base-T Ethernet, IEEE 802.3u 100Base-TX Fast Ethernet, IEEE 802.3ab 1000Base-T Copper Gigabit Ethernet, IEEE 802.3x Flow Control

#### Data Transfer Rate:

- Ethernet: 10Mbps (Half-Duplex), 20Mbps (Full-Duplex)
- Fast Ethernet: 100Mbps (Half-Duplex), 200Mbps (Full-Duplex)
- Gigabit Ethernet: 2000Mbps (Full-Duplex)

#### Cabling:

- Ethernet: 2-pair UTP/STP Cat. 3,4,5, 100 meters max.
- Fast Ethernet: 2-pair UTP/STP Cat. 5, 100 meters max.
- Gigabit Ethernet: 4-pair UTP/STP Cat. 5, 100 meters max.

#### Protocol:

- CSMA/CD

#### Topology:

- Star

#### Data RAM Buffers:

- 128KB per Device

#### Filtering Address Table:

- 4K entries per device

#### Diagnostic LEDs:

- Power, Link/ACT, 100Mbps, 1000Mbps

#### Power Consumption:

- 10.5 Watts; 5V DC, 2.4A External Power Adapter

#### Dimensions (WxDxH):

- 190 x 120 x 38mm (7.5 x 4.7 x 1.5 inch)

#### Weight:

- 0.77kg (1.7lb)

#### Temperature:

- Operating: 0° ~ 40° C (32° ~ 104° F)
- Storage: -10° ~ 55° C (14° ~ 131° F)

#### Humidity:

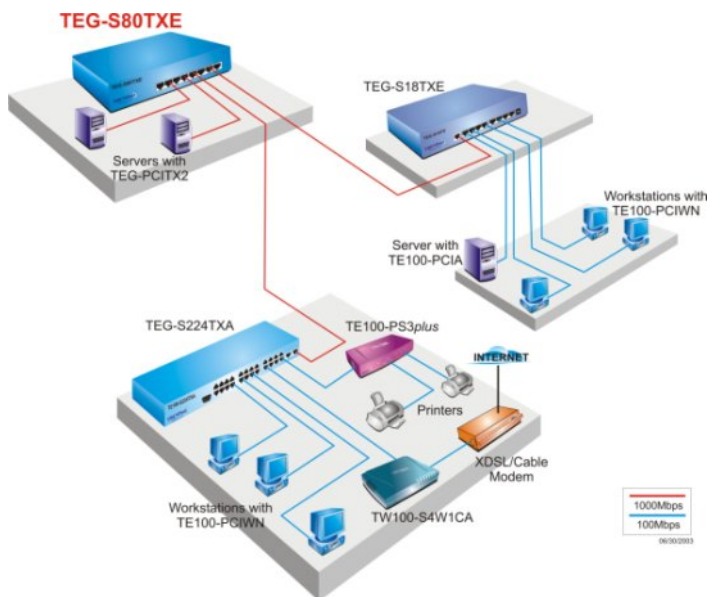
- 5% to 95% non-condensing

#### Certifications:

- FCC Class A, CE mark Class A, VCCI-A



### NETWORKING SOLUTIONS



**To Order Please Call:**  
**1-888-326-6061**

### PRODUCT INFORMATION

- TEG-S18TXE: 9-port 10/100/1000Mbps Copper Gigabit Switch with External Power Supply
- TEG-PCITX: 32-Bit PCI 10/100/1000Mbps Copper Gigabit Ethernet Adapter
- TEG-PCITX2: 64/32-Bit PCI 10/100/1000Mbps Copper Gigabit Ethernet Adapter
- TEG-S40TXE: 4-port 10/100/1000Mbps Copper Gigabit Switch with External Power Supply
- TEG-S50TXE: 4-port 10/100/1000Mbps Copper Gigabit Switch with External Power Supply
- TEG-S80TXE: 8-port 10/100/1000Mbps Copper Gigabit Switch with External Power Supply

### ORDERING INFORMATION

#### TRENDware International, Inc.

3135 Kashiwa Street  
Torrance, CA. 90505. USA  
Tel: 310-891-1100  
Fax: 310-891-1111  
Web: [www.TRENDNET.com](http://www.TRENDNET.com)  
Email: [sales@trendware.com](mailto:sales@trendware.com)

