



TEG-S40TXE

4-Port 10/100/1000Mbps Copper Gigabit Ethernet Switch with External Power Supply

TRENDnet's TEG-S40TXE Copper Gigabit Ethernet Switch with External Power Supply consist of four 10/100/1000Mbps Copper Gigabit Ethernet ports with each port having Auto-negotiation and Auto-MDIX features. The Switch offers a reliable and affordable LAN solution to meet immediate bandwidth demand. Users can connect Server(s) to the Gigabit port(s) to increase network performance or cascade Copper Gigabit Switches together to create high-bandwidth Gigabit backbones. TRENDnet's TEG-S40TXE provides simple migration, scalability, and flexibility to handle new applications and data types making it a highly reliable and cost effective solution for high-speed network connectivity.



FEATURES

- 4 x 10/100/1000Mbps Copper Gigabit Ethernet Ports
- Full/Half duplex transfer mode for 10/100Mbps, Full duplex mode for 1000Mbps
- Auto-MDIX media type detection for all ports; easy uplink with any port.
- Supports store-and-forward architecture with non-blocking full wire-speed performance
- 802.3x flow control for full-duplex mode and back pressure flow control for half-duplex mode operation
- Supports 8K MAC addresses entities per device
- 256 Kbytes packet buffer per device
- Extensive front-panel diagnostic LEDs
- External Power Supply
- 5-year Warranty

BENEFITS

- **Integration Friendly:**
Plug-n-Play. Connects with current Fast Ethernet Cat. 5 cables.
- **Flexible:**
All ports automatically negotiate 10/100/1000Mbps network speed. All ports are Auto-MDIX; connection can be made with either a straight through or a crossover cable.
- **Expandability:**
Cascade Gigabit Switches together to create a Gigabit backbone.
- **Performance:**
Gigabit performance, 10 times faster than the 100Mbps Fast Ethernet.



TEG-S40TXE

4-Port 10/100/1000Mbps Copper Gigabit Ethernet Switch with External Power Supply

SPECIFICATIONS

Standards:

- IEEE 802.3 10Base-T Ethernet, IEEE 802.3u 100Base-TX Fast Ethernet, IEEE 802.3ab 1000Base-T Gigabit Ethernet, ANSI/IEEE 802.3 NWay Auto-Negotiation, IEEE 802.3x Full-Duplex Flow Control

Data Transfer Rate:

- Ethernet: 10Mbps (Half-Duplex), 20Mbps (Full-Duplex)
- Fast Ethernet: 100Mbps (Half-Duplex), 200Mbps (Full-Duplex)
- Gigabit Ethernet: 2000Mbps (Full-Duplex)

Cabling:

- Ethernet: Cat. 3,4,5, UTP/STP, EIA/ITA-568 100 ohm
- Fast Ethernet: Cat. 5, UTP/STP EIA/TIA-568 100 ohm
- Gigabit Ethernet: Cat. 5, UTP/STP, EIA/TIA-568 100 ohm

Cable Length:

- 100 meters maximum

Protocol:

- CSMA/CD

Topology:

- Star

Data RAM Buffers:

- 256 Kbytes per device

Filtering Address Table:

- 8K entries per device

Diagnostic LEDs:

- Power, LINK/ACT, 100M, 1000M

Power Consumption:

- DC 5V, 2.4A, 12 Watts max. External Power Supply

Dimensions:

- 190× 38 × 120 mm (7.5"×1.5"×4.7) (W x H x D)

Weight:

- 1.50 kg (3.31 lb)

Temperature:

- Operating: 0 °C ~ 40°C (32°~104°F)
- Storage: -10°C ~ 70°C (14°~158°F)

Humidity:

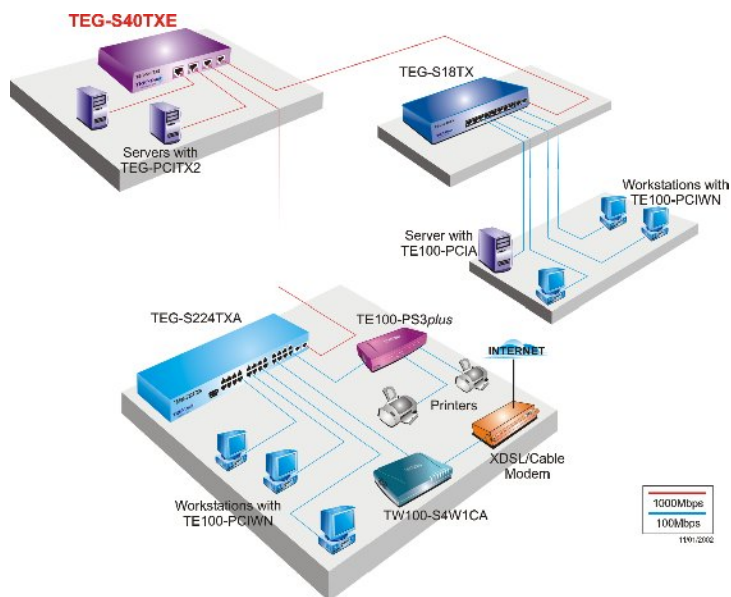
- 5%~90 % (non-condensing)

Certifications:

- CE, FCC, VCCI-A



NETWORKING SOLUTIONS



PRODUCT INFORMATION

- TEG-S40TXE: 4-Port 10/100/1000Mbps Copper Gigabit Switch with External Power Supply
- TEG-S18TX: 9-port (8 x 10/100Mbps, 1 x 10/100/1000Mbps) Copper Gigabit Switch
- TEG-S28TX: 10-port (8 x 10/100Mbps, 2 x 10/100/1000Mbps) Copper Gigabit Switch
- TEG-S40TXD: 4-Port 10/100/1000Mbps Copper Gigabit Switch
- TEG-S80TXD: 8-Port 10/100/1000Mbps Copper Gigabit Switch
- TEG-S160TX: 16-Port 10/100/1000Mbps Copper Gigabit Switch
- TEG-S224TXA: 26-port (24 10/100, 2 10/100/1000) Copper Gigabit Switch
- TEG-PCITX2: 32/64-Bit PCI 10/100/1000Mbps Copper Gigabit Ethernet Card

ORDERING INFORMATION

TRENDware International, Inc.

3135 Kashiwa Street
Torrance, CA. 90505. USA

Tel: 310-891-1100

Fax: 310-891-1111

Web: www.TRENDNET.com

Email: sales@trendware.com



To Order Please Call:
1-888-326-6061