



TEG-PCITX2

32/64-Bit PCI 10/100/1000Mbps NWay Copper Gigabit Ethernet Adapter

TRENDnet's TEG-PCITX2 32/64-Bit PCI 1000Base-T NWay Copper Gigabit Ethernet Card is a high-bandwidth network adapter that auto-senses 10/100/1000Mbps connection speed, half/full-duplex mode, and MDI-X/MDI-II medium type. It includes the latest VLAN and multicasting functions to efficiently utilize network bandwidth for maximum data throughput. With its 1000Mbps bandwidth capacity, the TEG-PCITX2 is ideal for high traffic Power Server and Video-Conferencing Workstation.

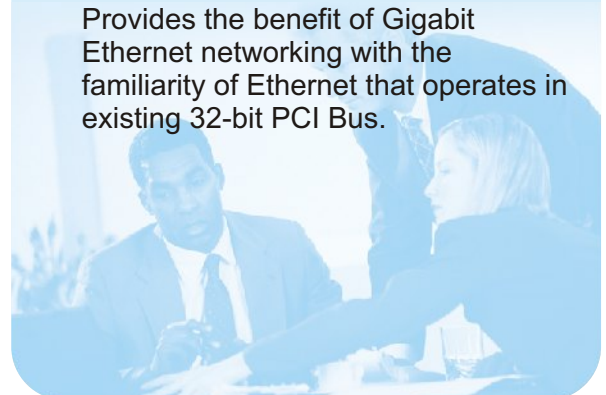


FEATURES

- ... IEEE 802.3, 802.3u and 802.3ab compliant
- ... Support 32/64-Bit 33/66Mhz PCI Local Bus Master high-speed operation of Rev. 2.1/2.2 specification
- ... One RJ-45 Connector: Auto connection speed detection of 10Mbps Ethernet, 100Mbps Fast Ethernet, and 1000Mbps Gigabit Ethernet
- ... Auto MDI-X/MDI-II medium type detection
- ... Supports Full-Duplex mode doubles the bandwidth to 20/200/2000Mbps
- ... Built-in FIFO buffers reduces overhead of memory transfers
- ... Plug and Play Installation
- ... 5 Year Warranty

BENEFITS

- ... **Performance:**
The full-duplex Gigabit adapter brings high bandwidth with 2000Mbps speeds
- ... **User Friendliness:**
Plug and Play with drivers support all popular network operating systems.
- ... **Flexibility:**
Single RJ-45 connector auto detects 10/100/1000Mbps connection speed, Half/Full duplex mode, and MDI-II/MDI-X medium type.
- ... **Cost-Effectiveness:**
Provides the benefit of Gigabit Ethernet networking with the familiarity of Ethernet that operates in existing 32-bit PCI Bus.



TEG-PCITX2

32/64-Bit PCI 10/100/1000Mbps NWay Copper Gigabit Ethernet Adapter

SPECIFICATIONS

Standards:

- IEEE 802.3 10Base-T Ethernet, IEEE 802.3u 100Base-TX Fast Ethernet, IEEE 802.3ab 1000Base-T Gigabit Ethernet, ANSI/IEEE 802.3 NWay Auto-Negotiation, IEEE 802.X Flow Control

Data Transfer Rate:

- Ethernet: 10Mbps (Half-Duplex) 20Mbps (Full-Duplex)
- Fast Ethernet 100Mbps (Half-Duplex), 200Mbps (Full-Duplex)
- Gigabit Ethernet 1000Mbps (Half-Duplex), 2000Mbps (Full-Duplex)

Cabling (STP):

- Ethernet: 2-pair UTP CAT 3,4,5, EIA/ITA-568 100-ohm screened twisted pair (STP)
- Fast Ethernet: 2-pair UTP CAT 5, EIA/TIA-568 100ohm screened twisted pair (STP)
- Gigabit Ethernet: 4-pair UTP CAT 5, EIA/TIA-568 100-ohm screened twisted pair (STP)

Host Interface:

- 32/64-bit 33/66Mhz PCI Rev.2.1/2.2

Connector:

- Single RJ-45 UTP/STP, Auto MDI-II/MDI-X

Diagnostic LEDs:

- 10 Link, 100 Link, 1000 Link, Full-Duplex, Collision, and Activity

Power Consumption:

- 10 Watts (max)

Driver Support:

- Windows 98/Me/2000/NT4/XP, Linux, Novell Netware Server 5.x, and more

Dimensions:

- 164 x 69 mm (W x H)

Weight:

- 120.5g (4.25 Oz)

Temperature:

- Operating: -10° to 50° C (14° to 122°F)
- Storage: -10° to 70° C (14° to 158°F)

Humidity:

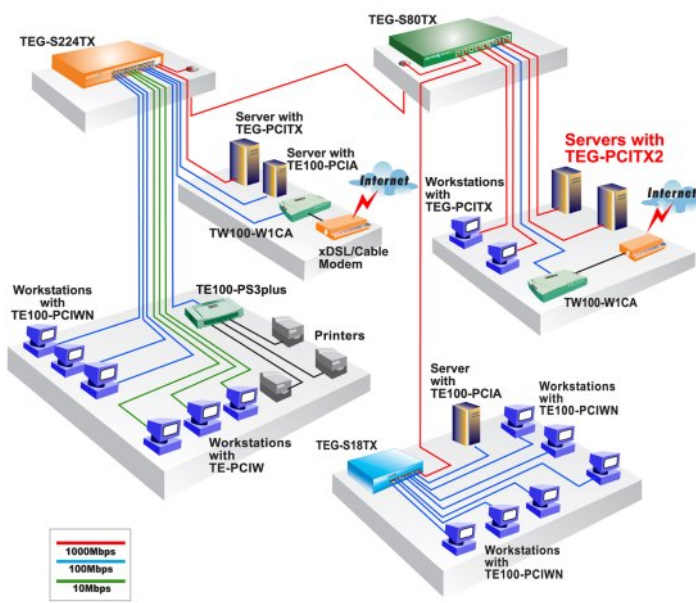
- Operating: 10 % to 90 % non-condensing
- Storage: 5% ~ 90% non-condensing

Certifications:

- FCC Class B, CE Class B, VCCI Class B



NETWORKING SOLUTIONS



To Order Please Call:
1-888-326-6061

PRODUCT INFORMATION

- TEG-S224TX: 26-port 10/100/1000Mbps NWay Copper Gigabit Ethernet Switch
- TEG-S80TX: 8-port 10/100/1000Mbps NWay Copper Gigabit Ethernet Switch
- TEG-S18TX: 9-port 10/100/1000Mbps NWay Copper Gigabit Ethernet Switch
- TEG-PCITX: 32-Bit PCI 10/100/1000Mbps NWay Copper Gigabit Ethernet Adapter
- TEG-PCITX2: 32/64-Bit PCI 10/100/1000Mbps NWay Copper Gigabit Ethernet Adapter
- ETH-800I: EIA-19" Rack-Mount Kit for TEG-S18TX

ORDERING INFORMATION

TRENDware International, Inc.

3135 Kashiwa Street
Torrance, CA. 90505. USA
Tel: 310-891-1100
Fax: 310-891-1111
Web: www.TRENDNET.com
Email: sales@trendware.com

