



## TEG-240WS

### 24-port 10/100/1000Mbps Gigabit Web-Based Smart Switch

TRENDnet's TEG-240WS 24-port 10/100/1000Mbps Web-Based Smart Switch is the ideal Switch for network segmenting. It has 24 10/100/1000Mbps Auto-Sensing and Auto-MDIX ports for easy installation. TEG-240WS supports web browser configuration; Network Administrator can use web browser to configure port speed, port-based VLAN and QoS, and also monitor each port's status which provides simple migration, scalability, and flexibility to handle new applications and data types. TRENDnet's TEG-240WS is powerful and easy-to-use in reducing unnecessary broadcast traffic and enhance network security.



#### FEATURES

- ...→ 24 x 10/100/1000Mbps Auto-negotiation, Auto-MDIX Gigabit Ports
- ...→ Full/Half-Duplex transfer mode for each port (1000Mbps Full-Duplex only)
- ...→ Full Wire-Speed Non-Blocking Reception and Transmission
- ...→ Store and Forward switching method
- ...→ 400K bytes RAM data buffer and 8K entries MAC address table
- ...→ Extensive diagnostic LED's on the front panel
- ...→ IEEE 802.3x flow control for full-duplex mode; Back Pressure flow control for half-duplex mode
- ...→ Proprietary Windows Based Management/Monitoring Utility (similar to SNMP Trap)
- ...→ Port-Based VLAN and Port-Based IEEE 802.1p QoS (High/Normal)
- ...→ Supports Trunking and Port Mirroring
- ...→ Port Setting function, users can set each port's availability, speed, duplex mode, and flow control
- ...→ Easy configuration via Web browser
- ...→ Standard 19" Rack-mount design
- ...→ 5-Year Warranty

#### BENEFITS

- ...→ **Easy Installation:**  
Each RJ-45 port auto-senses connection speed, duplex type and MDI-X media type. Connect to 10 or 100 or 1000Mbps network devices with straight through or crossover cable.
- ...→ **Flexibility:**  
Easy configuration and management through Web Browser.
- ...→ **Performance:**  
Non-blocking high performance with internal Switch Controller.
- ...→ **Cost-Effectiveness:**  
Provides Fast Ethernet Switch with management functions at an affordable price.



# TEG-240WS

## 24-port 10/100/1000Mbps Gigabit Web-Based Smart Switch

### SPECIFICATIONS

#### LAN Standards:

- IEEE 802.3 10Base-T; IEEE 802.3u 100Base-TX, IEEE 802.3ab 1000Base-T, 100Base-FX

#### Network Media:

- Ethernet: UTP/STP Cat. 3, 4, 5
- Fast Ethernet: UTP/STP Cat. 5
- Gigabit: UTP/STP Cat. 5/5E

#### Protocol:

- CSMA/CD

#### Topology:

- Star

#### LAN Port:

- 24 x 10/100Mbps Auto Negotiation, Auto-MDIX ports,

#### Address Table:

- 8K entries per device

#### Data Transfer Rate:

- Ethernet: 10/20Mbps (Half/Full-Duplex)
- Fast Ethernet: 100/200Mbps (Half/Full-Duplex)
- Gigabit Ethernet: 1000/2000Mbps (Full-Duplex)

#### Data RAM buffer:

- 400kbytes

#### Bandwidth:

- 48Gbps

#### Diagnostic LEDs:

- Per Unit: Power, System, Per Port (RJ-45): Link/Activity, 100Mbps.

#### Power Consumption:

- 32 Watts. Max

#### Dimensions (WxHxD):

- 440 x 210 x 44 mm (17.32 x 8.2 x 1.73 inches)

#### Weight:

- 2Kg. (4.48 lb)

#### Temperature:

- Operating: 0° ~ 40° C (32° ~ 104° F)
- Storage: -10° ~ 70° C (14° ~ 158° F)

#### Humidity:

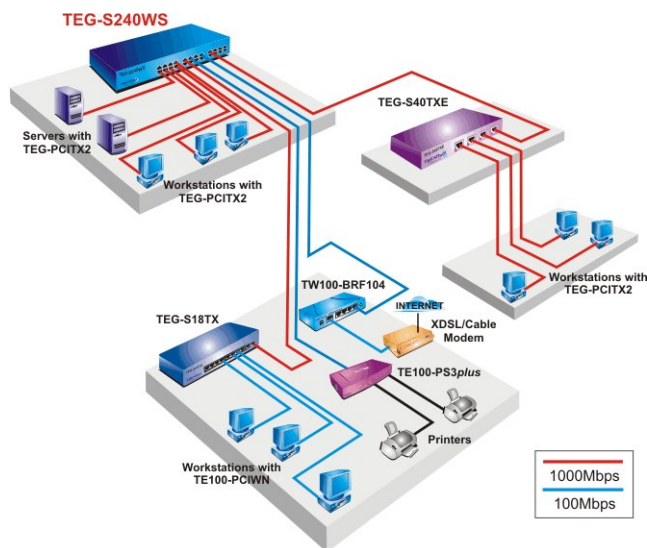
- 10% ~ 90% (no-condensing)

#### Certifications:

- FCC Class A, CE Mark A, VCCI-A



### NETWORKING SOLUTIONS



**To Order Please Call:**  
**1-888-326-6061**

### PRODUCT INFORMATION

- **TEG-160WS:**  
16-Port 10/100/1000Mbps Gigabit Web-based Smart Switch
- **TEG-240WS:**  
24-Port 10/100/1000Mbps Gigabit Web-based Smart Switch
- **TEG-2224WS:**  
28-Port 10/100/1000Mbps Web-based Smart Switch
- **TE100-S24WS:**  
24-Port 10/100Mbps web-based Smart Switch with Fiber Slot (Rack Mount)

### ORDERING INFORMATION

**TRENDware International, Inc.**  
3135 Kashiwa Street  
Torrance, CA. 90505. USA  
Tel: 310-891-1100  
Fax: 310-891-1111  
Web: [www.TRENDNET.com](http://www.TRENDNET.com)  
Email: [sales@trendware.com](mailto:sales@trendware.com)

**TRENDnet**  
TRENDware, USA