



TEG-224WS **26-port 10/100/1000Mbps Gigabit Web-Based Smart Switch**

TRENDnet's TEG-224WS 26-port 10/100/1000Mbps Web-Based Smart Switch is the ideal Switch for network segmenting and flexibility. It has 24 10/100Mbps and 2 10/100/1000Mbps Auto-Sensing and Auto-MDIX ports. TEG-224WS supports web browser configuration allowing Network Administrators to configure speed, VLAN, QoS, Trunking and Mirroring down to the port level. TRENDnet's TEG-224WS is powerful, easy-to-use and enhances network security.



FEATURES

- 24 x 10/100Mbps Auto-negotiation MDIX Fast Ethernet Ports
- 2 x 10/100/1000Mbps Auto-negotiation, Auto-MDIX Gigabit Ports
- Full/Half duplex mode for each port
- Store and Forward switching method
- Integrated address Look-Up Engine with 6K absolute MAC address table
- Supports 4MB RAM Data Buffering
- Extensive diagnostic LED's on the front panel
- IEEE 802.3x flow control for full/half-duplex mode
- Back pressure flow control for full/half-duplex mode
- Easy configuration the device from a Web browser
- Supports Port-Based VLAN and Port-Based IEEE 802.1p QoS
- Supports Trunking and Port Mirroring
- Support Port setting function allow user setting each port's speed, duplex mode, and flow control
- Standard 19" Rack-mount design
- 5-Years Warranty

BENEFITS

- **Easy Upgrade:**
Ethernet workgroups are able to upgrade to Fast Ethernet by changing adapters and a hub without changing switches.
- **Flexibility:**
Easy management and configuration through Web browser
- **Performance:**
Provides non-blocking high performance with internal switch controller.
- **Cost-Effectiveness:**
The TEG-224WS presents Gigabit Ethernet at an affordable rate.



TEG-224WS

26-port 10/100/1000Mbps Gigabit Web-Based Smart Switch

SPECIFICATIONS

LAN Standards:

- IEEE 802.3 10Base-T, IEEE 802.3u 100Base-TX, IEEE 802.3ab 1000Base-T, IEEE 802.3x Full Duplex Flow Control

Network Media:

- Ethernet: UTP/STP Cat. 3, 4, 5
- Fast Ethernet: UTP/STP Cat. 5
- Gigabit : UTP/STP Cat. 5, Cat 5E (Recommend)

Protocol:

- CSMA/CD

Topology:

- Star

LAN Port:

- 24 x 10/100Mbps Auto Negotiation, Auto-MDIX Fast Ethernet ports,
- 2 x 10/100/1000Mbps Auto Negotiation, Auto MDIX Gigabit ports
- Address Table: 6K entries per device)

Data Transfer Rate:

- Ethernet: 10/20Mbps – Half/Full-Duplex
- Fast Ethernet: 100/200Mbps – Half/Full Duplex
- Gigabit Ethernet: 1000/2000Mbps – Half/Full Duplex

Diagnostic LEDs:

- Per Unit: Power, System
- Per Fast Ethernet Port: Link/ACT, 100M (port 1~24)
- Per Gigabit Ethernet Port: Link/ACT, 1000M, 100M (port 25,26)

Power Consumption:

- 16 Watts. Max

Power Supply:

- 100-240V AC, 50/60Hz Internal Universal Power Supply

Dimensions:

- 440 x 140 x 44 mm (17.32" x 5.5" x 1.73")

Weight:

- 4.7 lb

Temperature:

- Operating: 0° ~ 40° C (32° ~ 104° F)
- Storage: -10° ~ 70° C (14° ~ 158° F)

Humidity:

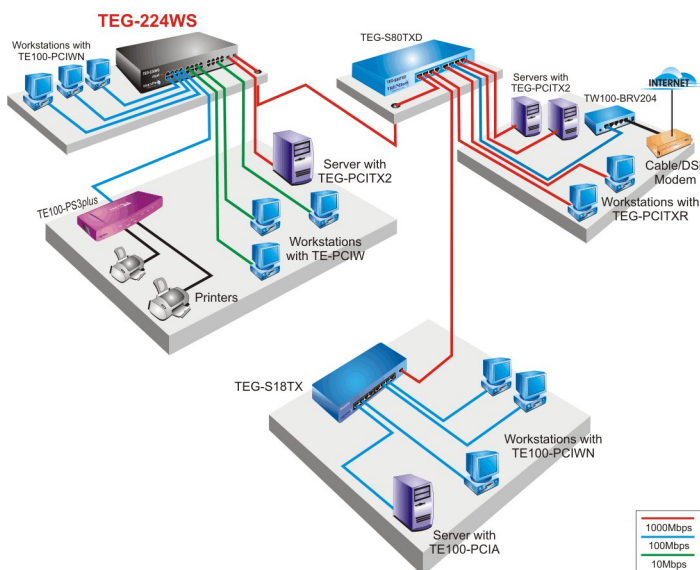
- 10% ~ 90% (no-condensing)

Certifications:

- FCC Class A, CE Mark A, VCCI-A



NETWORKING SOLUTIONS



PRODUCT INFORMATION

- ➔ **TEG-224WS:**
26-Port 10/100/1000Mbps Gigabit Web-Based Smart Switch(Rack Mount)
- ➔ **TEG-S18TXE:**
9-Port (8 10/100, 1 10/100/1000) Copper Gigabit Mini Switch
- ➔ **TEG-S80TXD:**
8-Port Copper Gigabit Switch

ORDERING INFORMATION

TRENDware International, Inc.
3135 Kashiwa Street
Torrance, CA. 90505. USA
Tel: 310-891-1100
Fax: 310-891-1111
Web: www.TRENDNET.com
Email: sales@trendware.com



To Order Please Call:
1-888-326-6061