



TEG-160WS

16-port 10/100/1000Mbps Gigabit Web-Based Smart Switch

TRENDnet's TEG-160WS 16-port 10/100/1000Mbps Web-Based Smart Switch is the ideal Switch for network segmenting. It has 16 10/100/1000Mbps Auto-Sensing and Auto-MDIX ports for easy installation. TEG-160WS supports web browser configuration; Network Administrator can use web browser to configure port speed, port-based VLAN and QoS, and also monitor each port's status which provides simple migration, scalability, and flexibility to handle new applications and data types.. TRENDnet's TEG-160WS is powerful and easy-to-use in reducing unnecessary broadcast traffic and enhance network security.

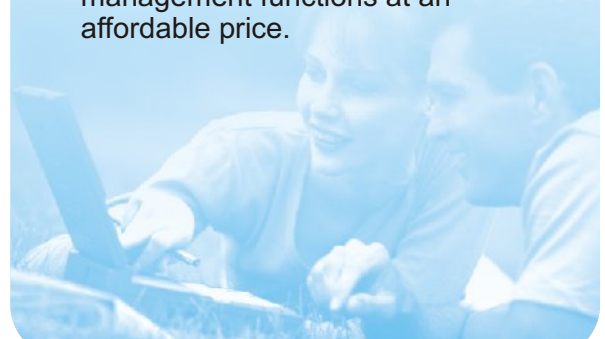


FEATURES

- ...> 16x 10/100/1000Mbps Auto-negotiation, Auto-MDIX Gigabit Ports
- ...> Full/Half-Duplex transfer mode for each port (1000Mbps Full-Duplex only)
- ...> Full Wire-Speed Non-Blocking Reception and Transmission
- ...> Store and Forward switching method
- ...> 272K bytes RAM data buffer and 4K entries MAC address table
- ...> Extensive diagnostic LED's on the front panel
- ...> IEEE 802.3x flow control for full-duplex mode; Back Pressure flow control for half-duplex mode
- ...> Proprietary Windows Based Management/Monitoring Utility (similar to SNMP Trap)
- ...> Port-Based VLAN and Port-Based IEEE 802.1p QoS (High/Normal)
- ...> Supports Trunking and Port Mirroring
- ...> Port Setting function, users can set each port's availability, speed, duplex mode, and flow control
- ...> Easy configuration via Web browser
- ...> Standard 19" Rack-mount design
- ...> 5-Year Warranty

BENEFITS

- ...> **Easy Installation:**
Each RJ-45 port auto-senses connection speed, duplex type and MDI-X media type. Connect to 10 or 100 or 1000Mbps network devices with straight through or crossover cable.
- ...> **Flexibility:**
Easy configuration and management through Web Browser.
- ...> **Performance:**
Non-blocking high performance with internal Switch Controller.
- ...> **Cost-Effectiveness:**
Provides Fast Ethernet Switch with management functions at an affordable price.



TEG-160WS

16-port 10/100/1000Mbps Gigabit Web-Based Smart Switch

SPECIFICATIONS

LAN Standards:

- IEEE 802.3 10Base-T; IEEE 802.3u 100Base-TX, IEEE 802.3ab 1000Base-T, 100Base-FX

Network Media:

- Ethernet: UTP/STP Cat. 3, 4, 5
- Fast Ethernet: UTP/STP Cat. 5
- Gigabit: UTP/STP Cat. 5/5E

Protocol:

- CSMA/CD

Topology:

- Star

LAN Port:

- 16 x 10/100Mbps Auto Negotiation, Auto-MDIX ports

Address Table:

- 4K entries per device

Data Transfer Rate:

- Ethernet: 10/20Mbps (Half/Full-Duplex)
- Fast Ethernet: 100/200Mbps (Half/Full-Duplex)
- Gigabit Ethernet: 1000/2000Mbps (Full-Duplex)

Data RAM Buffer:

- 272 Kbytes

Bandwidth:

- 32Gbps

Diagnostic LEDs:

- Per Unit: Power, System
- Per Port (RJ-45): Link/Activity, 100Mbps.

Power Consumption:

- 25 Watts. Max

Dimensions (WxHxD):

- 440 x 210 x 44 mm (17.32 x 8.3 x 1.73 inches)

Weight:

- 2Kg. (4.48 lb)

Temperature:

- Operating Temperature: 0° ~ 40° C (32° ~ 104° F)
- Storage Temperature: -10° ~ 70° C (14° ~ 158° F)

Humidity:

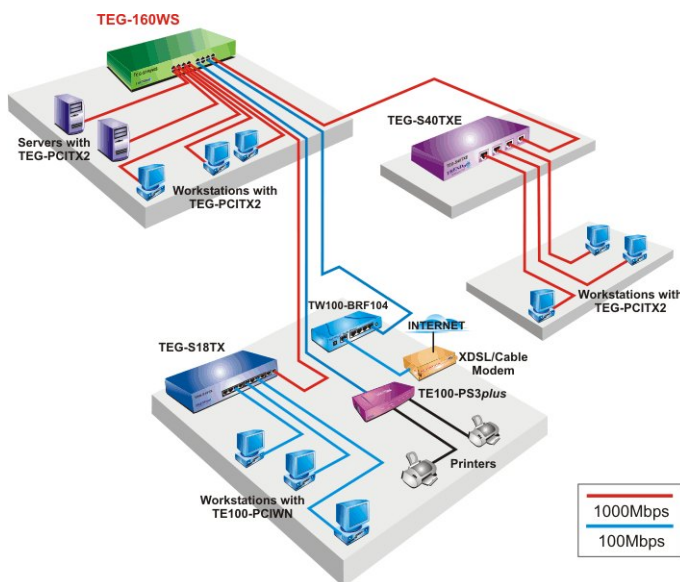
- 10% ~ 90% (no-condensing)

Certifications:

- FCC Class A, CE Mark A, VCCI-A



NETWORKING SOLUTIONS



To Order Please Call:
1-888-326-6061

PRODUCT INFORMATION

- ➔ **TEG-160WS:**
16-Port 10/100/1000Mbps Gigabit Web-based Smart Switch
- ➔ **TEG-240WS:**
24-Port 10/100/1000Mbps Gigabit Web-based Smart Switch
- ➔ **TEG-2224WS:**
28-Port 10/100/1000Mbps Web-based Smart Switch
- ➔ **TE100-S24WS:**
24-Port 10/100Mbps web-based Smart Switch with Fiber Slot (Rack Mount)

ORDERING INFORMATION

TRENDware International, Inc.
3135 Kashiwa Street
Torrance, CA. 90505. USA
Tel: 310-891-1100
Fax: 310-891-1111
Web: www.TRENDNET.com
Email: sales@trendware.com

